



LAKE HAVASU CITY, ARIZONA ADDENDUM NO. 1

Vadose Well Design and Expansion Project
Project 107015

DATED: August 16, 2023

This addendum no. 1 forms a part of the contract described above.

Item No. 1:

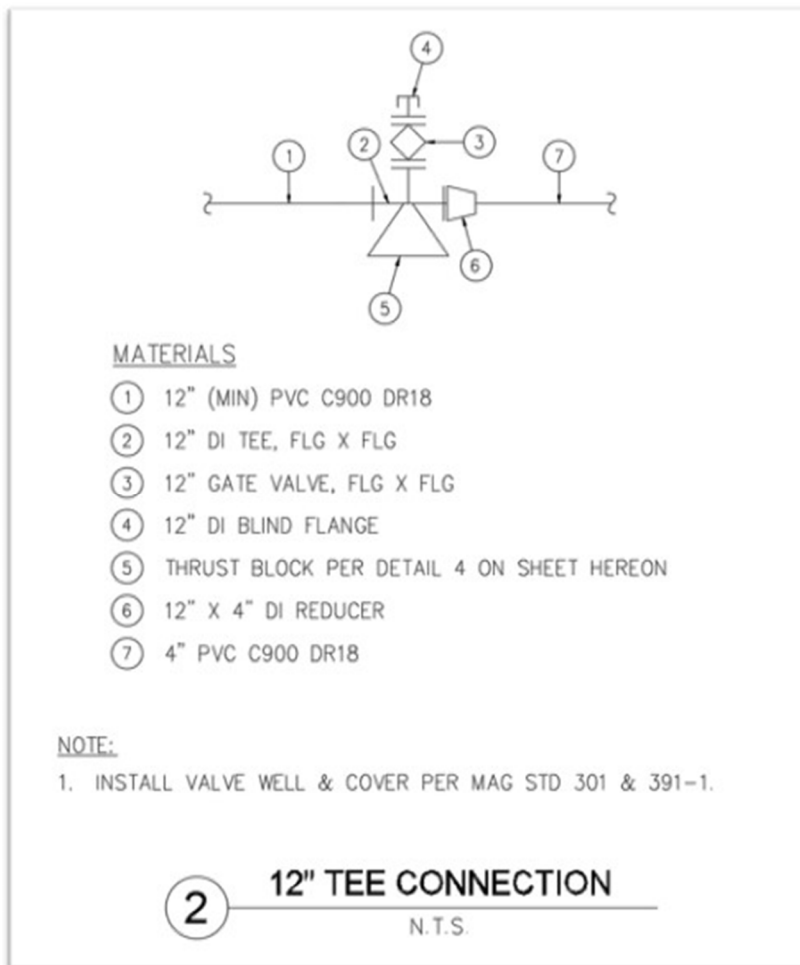
The following questions were received from bidders. Answers are provided herein by the OWNER:

1. **Question:** *"Please define the Access Road dimensions and materials required in bid item 4".*

Answer: Contractor shall refer to Detail 1 on Sheet C-3 for all dimensions for Bid Item 4. Concrete shall conform to the Lake Havasu City Technical Specifications for Public Works Construction as found on the City's Official Website.

2. **Question:** *"Plan Page 7 indicates 12" SDR 35 on the Profile View. It also indicates DR 14 C900 in Note 2. Plan Page 8 Detail 2 indicates 12" C900 DR18. Plan Page 7: What type of transition is required for the 12" to 4" piping at station 4+33.86? Please Clarify"*

Answer: Pipe material shall be 12" PVC C900 DR18. Replace existing Detail No. 2 on Sheet 8, Drawing C-3 with the Revised Detail No. 2 below:



3. **Question:** "Regarding the 12" conveyance line: The plans vary in the specification of the type of pipe (C-900 DR 14, SDR35 and C900 DR18) to be used."

Answer: Pipe material shall be 12" PVC C900 DR18.

4. **Question:** "Does the above-mentioned pipe need to be purple? Or is a purple sleeve acceptable on blue or green pipe?"

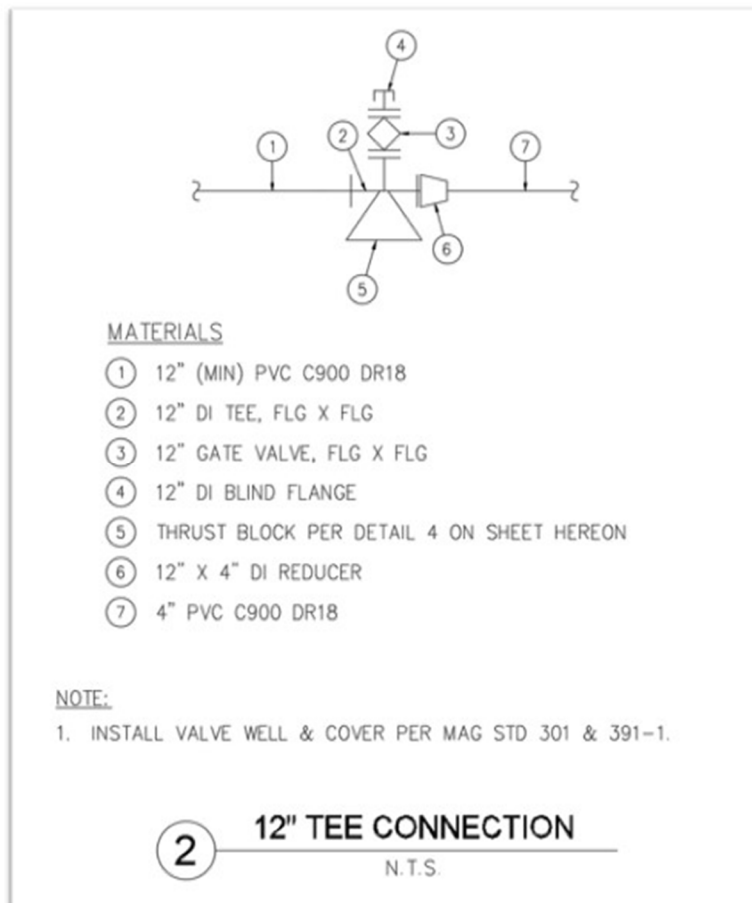
Answer: Yes, the pipe needs to be purple.

5. **Question:** "The fitting at sta. 0 + 70.80 (a 90 deg bend) doesn't specify what type or material. Is a concrete lined, ductile iron fitting with mechanical joints acceptable?"

Answer: Yes, concrete lined DI with mechanical joints and thrust blocking per Detail 4 on Sheet C-3 is acceptable.

6. **Question:** "Regarding the Tee assembly at sta. 3 + 98.00: Is this a ductile iron fitting and valve? Is MJ x MJ x Flange acceptable vs. the stated PO (push on) x Flange? Also, note the C900 DR18 call out."

Answer: Replace existing Detail No. 2 on Sheet 8, Drawing C-3 with the Revised Detail No. 2 below. Pipe and fitting material shall be as shown on Detail 2 below:



7. **Question:** "Regarding the transition from 12" pipe to 4" pipe at sta. 4+33.86: Can we get a detail showing what the intention is to accomplish this transition?"

Answer: As shown in Revised Detail 2 above, the transition from 12" to 4" is at Sta 3+98.00. The 4-inch PVC pipe would run to the buried elbow which would be flanged steel or DI. The 4-inch piping past the elbow is to be steel as show on Drawing M-1.

8. **Question:** "At said transition, the type of pipe, below ground is unspecified as per the type of pipe."

Answer: See the response to question 7.

9. **Question:** "Specification 02250 (Utility Valves & Accessories), Part #1.2(B) mentions "....and all valves and fittings shall be manufactured in U.S." So, are Domestic requirements required for this project? There is no mention of this in the Water Piping Specification #02250 or any notes on the plans."

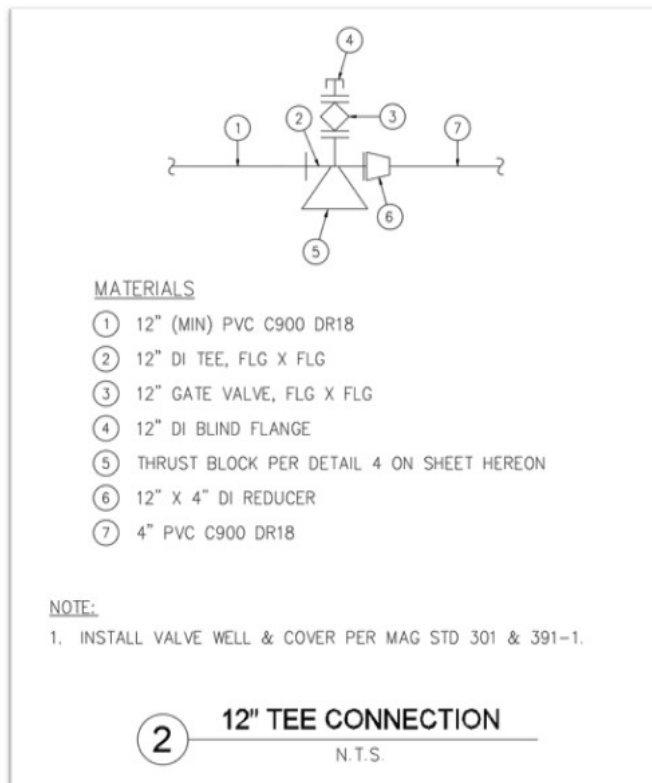
Answer: Utility Valves & Accessories are specified in Section 02515. This section is listed in the Specifications Table of Contents, and is a part of the Bid Package. All valves and accessories are to be provided as specified in that Section, 02515.

10. **Question:** “What type of underground PVC pipe is required? Sheet C-2, Key Note #2 calls out 12” DR-14 C900....Sheet C-2 in the profile view calls out 12” SDR-35....Sheet C-3, Tee Connection Detail calls out 12” DR-18, C900.”

Answer: See the response to question 3.

11. **Question:** “What point or distance from the well on Sheet M-1 does the 4” Well Discharge line change to 12” size as shown on Sheet C-2?”

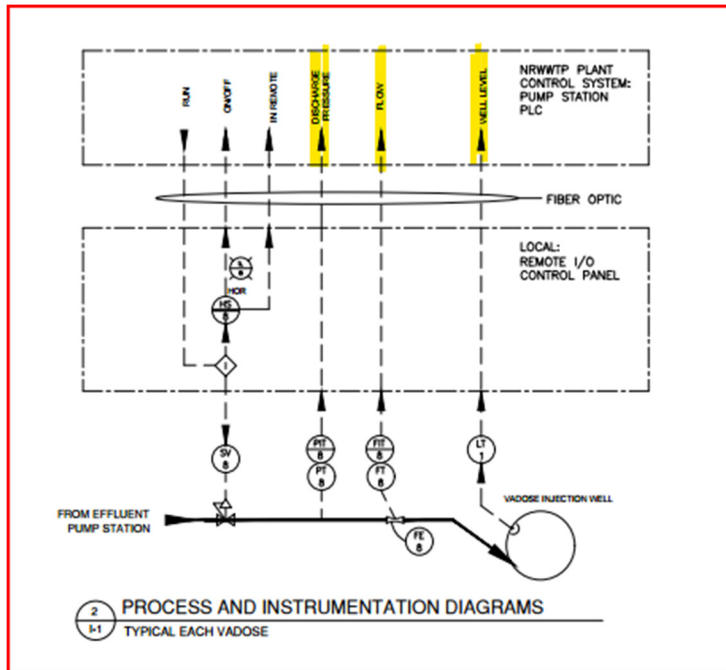
Answer: Replace existing Detail No. 2 on Sheet 8, Drawing C-3 with the Revised Detail No. 2 below. Pipe and fitting material shall be as shown on Detail 2 below. Detail 2 is referenced on Drawing C-2 as Key Note 9, at STA 3+98.00.



12. **Question:** “What size and type of “Metallic Detector Tape” is required as shown on Sheet C-3, City of Lake Havasu City, Utility Trench Detail #200? I looked on the city website and cannot find information pertaining to this.”

Answer: Buried Warning and Identification Tape is specified in Specification Section, 02300 Trench Excavation, in Section 2.5 Buried Warning and Identification Tape.

13. **Question:** I have a question regarding the I/O required for the Well 8 Remote I/O Control Panel. Is the analog output card required that is named in the specs? Is there future expansion that may require this item?



Answer: Delete Specification Section 16924-2.3.E.5, Analog Output Modules. Delete requirements, including spares, for Analog Outputs. There are none required on this project.