



LAKE HAVASU CITY, ARIZONA
ADMINISTRATIVE SERVICES DEPARTMENT
◆ PROCUREMENT ◆

**INVITATION TO BID
ISLAND WWTP FILTE UPGRADE PROJECT
PROJECT NO. B26-PW-107026-500701
ADDENDUM NO. 1
OCTOBER 2, 2025**

Attention is called to the following changes, additions, clarifications and/or deletions to the original solicitation and they shall be considered in preparing submissions:

There is no change in the opening date. **Submissions are due no later than 3:00 p.m., Arizona Time, OCTOBER 8, 2025**, at the City Clerk's Office, 2330 McCulloch Blvd. N., Lake Havasu City, AZ 86403.

ITEM ONE (1): QUESTIONS AND ANSWERS

Question 1: Can you clarify "accessories" (pipes, valves, coupling, etc.)?

Answer 1: These items are part of the package from filter equipment manufacturer as necessary to provide a full and complete functioning system.

Question 2: Can you provide a specification for the pumps?

Answer 2: The backwash pumps are part of the package from filter equipment manufacturer, and the design criteria is provided in project specifications DIV 15 Section 15501.2.07.D.

Question 3: Sheet M-03 indicates 2 filter Control Panels being replaced. Electrical One-line indicates 1 filter Control Panel. Which is correct?

Answer 3: There is one control panel per filter. The electrical one-line has been updated accordingly to show two control panels (See Exhibit A). The control panels will be identical.

Question 4: One-Line refers to vendor drawings for conduit and wire sizes. Do we have vendor drawings?

Answer 4: No, the City will not provide vendor drawings. Contractors should contact the filter equipment manufacturer for all pertinent bridge equipment related information.

Question 5: Who is responsible for furnish and install of festoon cable system (Note 6 sheet M-03)?

Answer 5: The festoon cable system is a part of the travelling bridge and shall be provided by the filter equipment manufacturer to be installed by the contractor. The existing festoon posts are to be reused. Refer to filter specification 15501.2.08.

Question 6: Where is the existing MCC located?

Answer 6: Refer to Exhibit B of this Addendum.

Question 7: Can you provide specifications on backwash pumps and accessories?

Answer 7: Refer to Specification 15501 for the equipment provided by the filter manufacturer.

Question 8: Are all gratings to be removed and re-installed or will they be replaced?

Answer 8: All existing grating shall be replaced. Refer to drawings and specifications 06611.

Question 9: Please provide a detail for pipe valve and fittings underneath bridge that have to do with backwash pumps?

Answer 9: All the piping and accessories associated with the backwash pumps shall be provided by the filter equipment manufacturer to be installed by the contractor per manufacturer's direction. Refer to filter specification 15501.

Question 10: Will all pipe, valves and fittings be stainless steel?

Answer 10: Refer to Filter Specification 15501.

Question 11: Who will be responsible for removing current media filter?

Answer 11: Contractor is responsible for the removal and replacement of filter media. Filter media is to be ordered through the filter equipment manufacturer.

Question 12: On plan page S-01, what is the repair depth of the concrete? Did we need to go down to or past the rebar?

Answer 12: Per the prebid meeting, the contractor should assume a repair depth of around 3-inches. Rebar is typically 2-3 inches from surface of concrete. In some instances, it may be necessary to go past the rebar.

Question 13: Who provides the travel bridge guide rails?

Answer 13: These are provided by the filter manufacturer per Specification 15501.

Question 14: What equipment is the filter manufacturer providing?

Answer 14: Refer to Specification 15501 for the equipment provided by the filter manufacturer.

Question 15: Is the objective to remove all unsound concrete?

Answer 15: Yes. Power tool cleaning, wire brush, and high pressure wash should remove all unsound concrete, per concrete repair notes on Sheet M-02.

Question 16: Are we required to go behind the rebar to fix the unsound concrete?

Answer 16: There may be spots where that is required.

Question 17: Plan page M-03: What are the specifications for the basin pump(s)?

Answer 17: Refer to Filter Specification 15501.2.07.D

Question 18: Is the grating to be replaced with aluminum or FRP? It is not clear from the plans.

Answer 18: FRP grating per Specification 06611.

Question 19: Are the design drawings from the filter vendor available?

Answer 19: We only have the original design drawing of the control panel and electrical schematic for the filter control panel (See Exhibit C). There are two filter control panels that will be replaced, one for each filter, and they should be identical.

ITEM TWO (2): PRE-BID CONFERENCE ATTENDANCE

The attendance sign-in sheet from the pre-bid conference is hereby attached (See Exhibit D).

Andrew Klos, CPPB
Senior Procurement Specialist

Date:	10/1/2025
Date:	10/1/2025
Date:	10/1/2025
Sheet	E-01

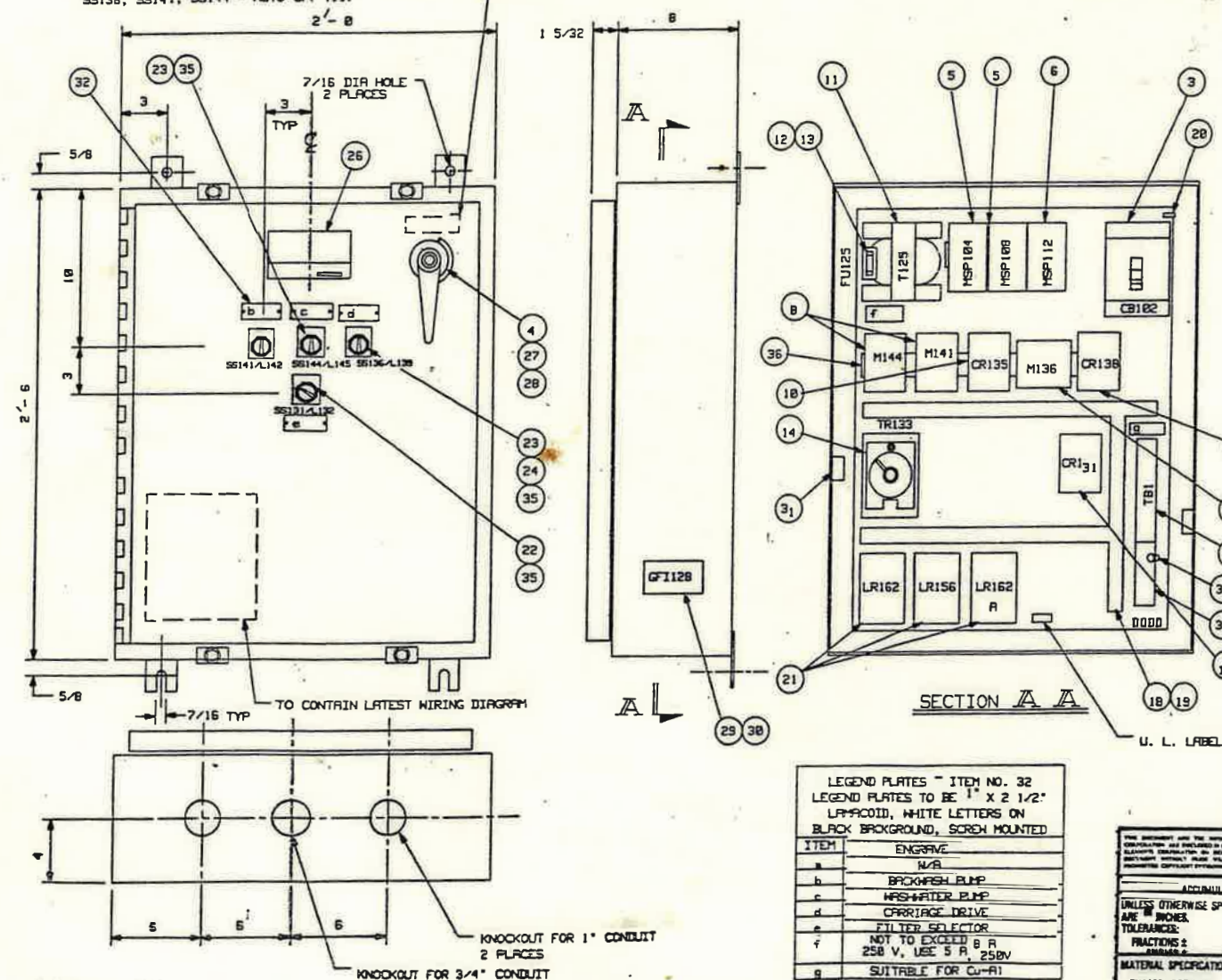


NOTES:

- 1 - CONTROL PANEL TO BE NEHA 4, TYPE 304 STAINLESS STEEL, 14 GA. CONSTRUCTION TO INCLUDE:
 - A. CONTINUOUS WELDED TIGHT JOINTS
 - B. ALL CONDUIT OPENINGS TO BE PLUGGED WITH HOFFMAN NO. A-5100
 - C. ENCLOSURE TO BE FREE FROM ABRASIONS AND CORROSION, FINISH TO HAVE REFLECTIVE SHEEN
- 2 - PERMANENTLY MARK ALL COMPONENTS WITH RESPECTIVE CIRCUIT SYMBOL
- 3 - ITEM NO. 26 FURNISHED TO VENDOR BY ENVIRONMENTAL ELEMENTS CORP.
- 4 - MARK WIRE NUMBERS IN INK ON MARKING STRIP OF TBI
- 5 - NAMEPLATES, ITEM NO. 26, AND LEGEND PLATES, ITEM NO. 32 TO BE FASTENED TO DOOR WITH NON-METALLIC FASTENERS
- 6 - APPROXIMATE WT. = 175#
- 7 - MARK LEGEND PLATES, ITEM NO. 32, AS FOLLOWS:
 - SS131 = MAINTENANCE - FILTER ON;
 - SS136, SS141, SS144 = AUTO OFF MAN

U.L. LISTED - FILE NO. E-75744
 THE MANUFACTURER SHALL ESTABLISH AND MAINTAIN
 A PROGRAM OF PRODUCTION, INSPECTION AND TESTS
 SO AS TO ASSURE COMPLIANCE OF THE LISTED
 PRODUCT WITH THE LABORATORIES REQUIREMENTS

NAMEPLATE INSIDE DOOR TO READ: 460 VOLT, THREE PHASE, 60 HERTZ POWER
 8 KVA, TOTAL HP = 6 1/4



LEGEND PLATES - ITEM NO. 32
 LEGEND PLATES TO BE 1" X 2 1/2"
 LAFACOID, WHITE LETTERS ON
 BLACK BACKGROUND, SCREW MOUNTED

ITEM	ENGRAVE
a	N/A
b	BROOKHURST PUMP
c	WASH-WATER PUMP
d	CARRIAGE DRIVE
e	FILTER SELECTOR
f	NOT TO EXCEED 8 A 250 V, USE 5 A, 250V
g	SUITABLE FOR CU-RI

THIS DOCUMENT AND THE INFORMATION IT CONTAINS ARE THE PROPERTY OF ENVIRONMENTAL ELEMENTS CORPORATION AND ARE LOANED TO YOU BY THE CORPORATION. IT IS TO BE USED ONLY FOR THE PURPOSES SPECIFIED IN THE ORDER. IT IS NOT TO BE REPRODUCED OR TRANSMITTED IN ANY FORM OR BY ANY MEANS, ELECTRONIC OR MECHANICAL, INCLUDING PHOTOCOPYING, RECORDING, OR BY ANY INFORMATION STORAGE AND RETRIEVAL SYSTEM, WITHOUT THE WRITTEN PERMISSION OF ENVIRONMENTAL ELEMENTS CORPORATION. IT IS TO BE RETURNED TO THE CORPORATION WHEN NO LONGER NEEDED.

UNLESS OTHERWISE SPECIFIED, DIMENSIONS ARE IN INCHES.
 TOLERANCES:
 FRACTIONS: 3 PLACE DECIMALS
 DECIMALS: 3 PLACE DECIMALS
 MATERIAL SPECIFICATIONS, UNLESS OTHERWISE INDICATED:
 SHAPE: ASTM-A
 FINISH: MIL-STD-883C QUALITY ASSURED (CQ-8-800)
 PLATE: ASTM-A36
 SHEET OR STOP

DO NOT SCALE DRAWINGS

APPROVAL

REVISION	DATE	APPROVED
INITIAL ISSUE		

ITEM NO.	DESCRIPTION	QTY	UNIT	REMARKS
36	MOUNTING RAIL	1	EA	
35	LEGEND PLATES	1	EA	
34	WIRE LUG (#10 STUD)	1	EA	
33	TBI TERMINAL BLOCK	1	EA	
32	LEGEND PLATES	1	EA	
31	HF28433	2	EA	
30	HF39720	1	EA	
29	HF39719	1	EA	
28	HF39719	1	EA	
27	HF39719	1	EA	
26	HF39719	1	EA	
25	HF39719	1	EA	
24	HF39719	1	EA	
23	HF39719	1	EA	
22	HF39719	1	EA	
21	HF39719	1	EA	
20	HF39719	1	EA	
19	HF39719	1	EA	
18	HF39719	1	EA	
17	HF39719	1	EA	
16	HF39719	1	EA	
15	HF39719	1	EA	
14	HF39719	1	EA	
13	HF39719	1	EA	
12	HF39719	1	EA	
11	HF39719	1	EA	
10	HF39719	1	EA	
9	HF39719	1	EA	
8	HF39719	1	EA	
7	HF39719	1	EA	
6	HF39719	1	EA	
5	HF39719	1	EA	
4	HF39719	1	EA	
3	HF39719	1	EA	
2	HF39719	1	EA	
1	HF39719	1	EA	

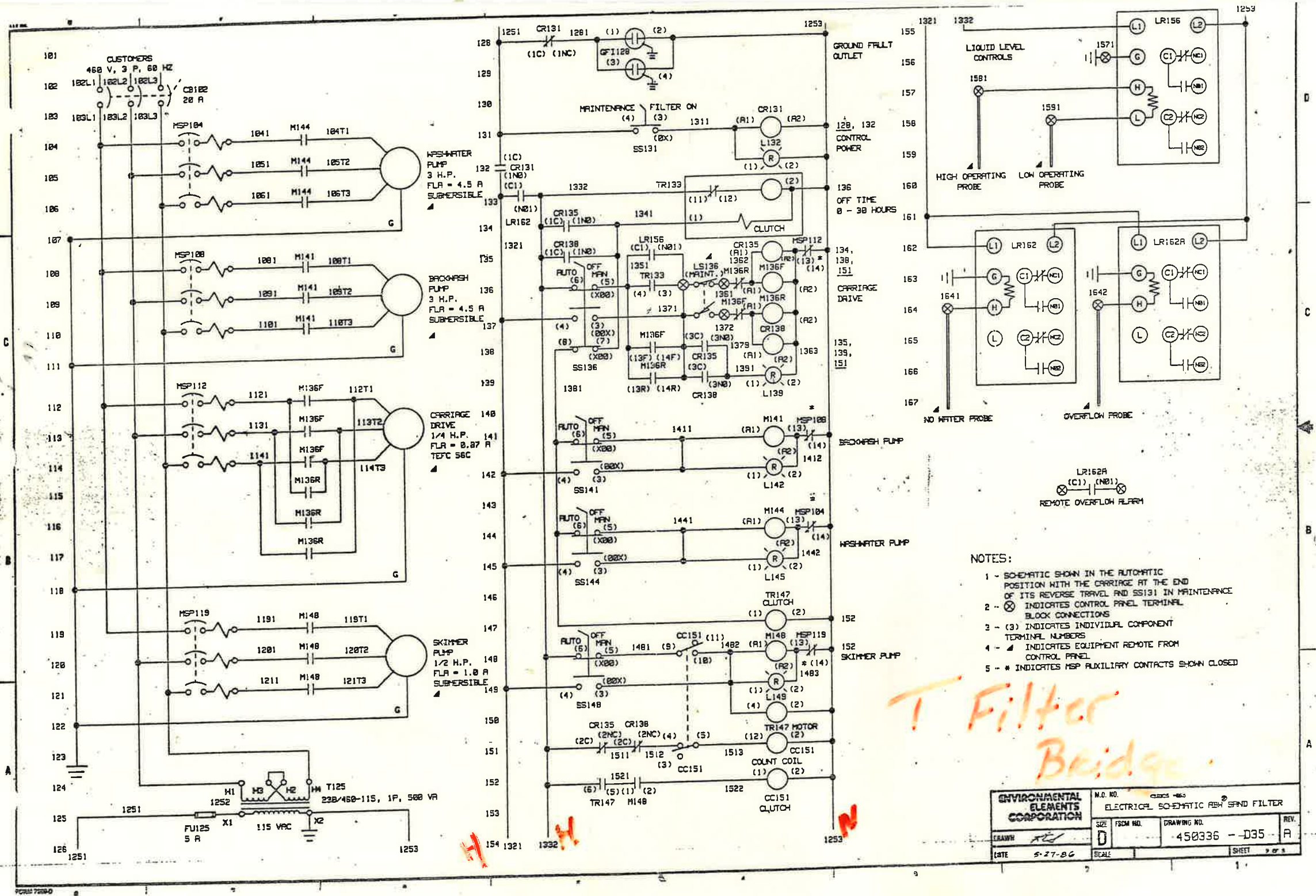
SHIPPING	END OF	DRAWING NUMBER	QUANTITY	RECD	CODE	DESCRIPTION	MATL/REMARKS	PAGE	LINE

ENVIRONMENTAL ELEMENTS CORPORATION
 P.O. Box 1050
 Baltimore, Md 21208 USA

CONTROL PANEL
 REB 8 SPND FILTER

SIZE: 1/2" x 1/2" x 1/2"
 SCALE: 1" = 1'-0"

DRAWING NO. 450337 - D35
 SHEET 1 OF 1





Island WWTP Filter Upgrade Project
Non-Mandatory Pre-Bid Meeting Agenda
Thursday, September 25, 2025 @ 11:00 am

Name	Organization	Phone Number	Email Address
JASON HART	LAKE HAVASU CITY	(928) 412-6758	hartj@lhcavaz.gov
MIKE YOUNG	FANN ENVIRONMENTAL	(928) 770-5335	mikeyoung@fannenvironmental.com
MATTHEW MANSELL	MANSELL WELDING	(928) 855-6743	mansell@mansellwelding.com
NIELS BERG	ROBERT PORTER CONSTRUCTION	(920) 207-0269	NIELS@Robertporterconstruction.com
Jacob Sims	RS Contracting	480-335-0409	-
Julius Escandon	RS Contracting	-	-
Joe Dyer	Felix Construction	202-480-5090	Joe.Dyer@FelixConstruction.com
Cris Bein	CDB Electric	928-279-6555	cdbelectric21@gmail.com
Freddy Pickering	TR-GR	480-647-9208	Frederick@TR-gr.com
Bill McCall	Schofield Civil	928-514-9445	wbmc@schofieldcivil.com
ROBERT SALAZAR	Felix Construction	625-606-0654	Robert.Salazar@felixconstruction.com
Ron Crites	Technology Const.	928-533-0715	estimator3@live.com
Andrew Klos	LHC - Procurement	(928) 854-4148	KlosA@lhcavaz.gov
Rocky HARFORD	RCC	760 701-2378	Rocky.RCC@Gmail.com
Jose Maldonado	River Cut / Core	(619) 244-6489	RCCINCMike@gmail.com