



LAKE HAVASU CITY, ARIZONA
ADMINISTRATIVE SERVICES DEPARTMENT
♦ PROCUREMENT ♦

**INVITATION TO BID
INSTALLATION OF UV DISINFECTION ASSEMBLIES AT MULBERRY WW
TREATMENT PLANT
PROJECT NO. B26-PW-10733-500714
ADDENDUM NO. 2
DECEMBER 9, 2025**

Attention is called to the following changes, additions, clarifications and/or deletions to the original solicitation and they shall be considered in preparing submissions:

There is no change in the opening date. **Submissions are due no later than 3:00 p.m., Arizona Time, DECEMBER 17, 2025**, at the City Clerk's Office, 2330 McCulloch Blvd. N., Lake Havasu City, AZ 86403 or electronically via DemandStar.

ITEM ONE (1): QUESTIONS AND ANSWERS

Question 1: Are there any electrical "as built" plans available? (Follow-up from Addendum 1)

Answer 1: Please see Attachment A to this Addendum.

ITEM TWO (2): PRE-BID ATTENDANCE

The sign-in sheet from last week's non-mandatory pre-bid conference has been provided (see Attachment B).

Andrew Klos, CPPB
Senior Procurement Specialist

REV	REVISION DESCRIPTION	LOG NO.	REV'D BY	CHK'D BY	APPROVED BY	DATE
B	DO CARD NUMBER UPDATED IN SHEET # 06	20-0503	JK	SK	SK	2020-07-22

TABLE OF CONTENTS			
SHEET NO.	DESCRIPTION	SHEET NO.	DESCRIPTION
00	TABLE OF CONTENTS	15	
01	MAIN POWER	16	
02	24VDC DISTRIBUTION	17	
03		18	
04		19	
05	REMOTE I/O – ANALOG OUTPUTS/INPUTS	20	
06	REMOTE I/O – DISCRETE OUTPUTS	21	
07	REMOTE I/O – DISCRETE OUTPUTS/INPUTS	22	
08		23	
09		24	
10	PANEL LAYOUT	25	
11	BACKPLATE LAYOUT, LABELS, BOM	26	
12		27	
13		28	
14		29	

NOTES:

1. ELECTRICAL ASSEMBLY TO BE ASSEMBLED UNDER UL508A AND THE MINIMUM REQUIREMENTS OUTLINED IN ES0127.WHERE THERE IS A CONFLICT BETWEEN THIS DOCUMENT AND REQUIREMENTS OF ES0127, THE INFORMATION PRESENTED IN THIS DOCUMENT WILL BE USED.
2. ENCLOSURE ENVIRONMENTAL RATING – UL TYPE 4X (IP66).
3. MINIMUM WIRE SIZE FOR CONTROL WIRE IS 16AWG STRANDED COPPER UNLESS WIRE CABLE OR HARNESS IS PROVIDED FOR COMPONENTS BY MANUFACTURER OR PER TROJAN DESIGN.

WIRE COLOUR CODING LEGEND

DESCRIPTION	DESIGNATION	WIRE
AC POWER	L1	BLACK
	N	WHITE
DC CONTROL	24VDC	BLUE
	OVC	WHITE/BLUE
GROUND	G	GREEN/YELLOW
EXTERNAL POWER		YELLOW

NOTE: EXCEPTION TO MANUFACTURER PRE-ASSEMBLED CABLES.

INTERNAL REFERENCE: ES0660

UNLESS OTHERWISE SPECIFIED:
DIMENSIONS ARE IN INCHES
TOLERANCES: 2 PL DEC ± 1/4
3 PL DEC ± 1/4
ANGLE DEG ± 1/4
REMOVE ALL BURRS, ALL CORNERS
R 0.010 OR BREAK EDGE
(E) – CRITICAL CHARACTERISTIC

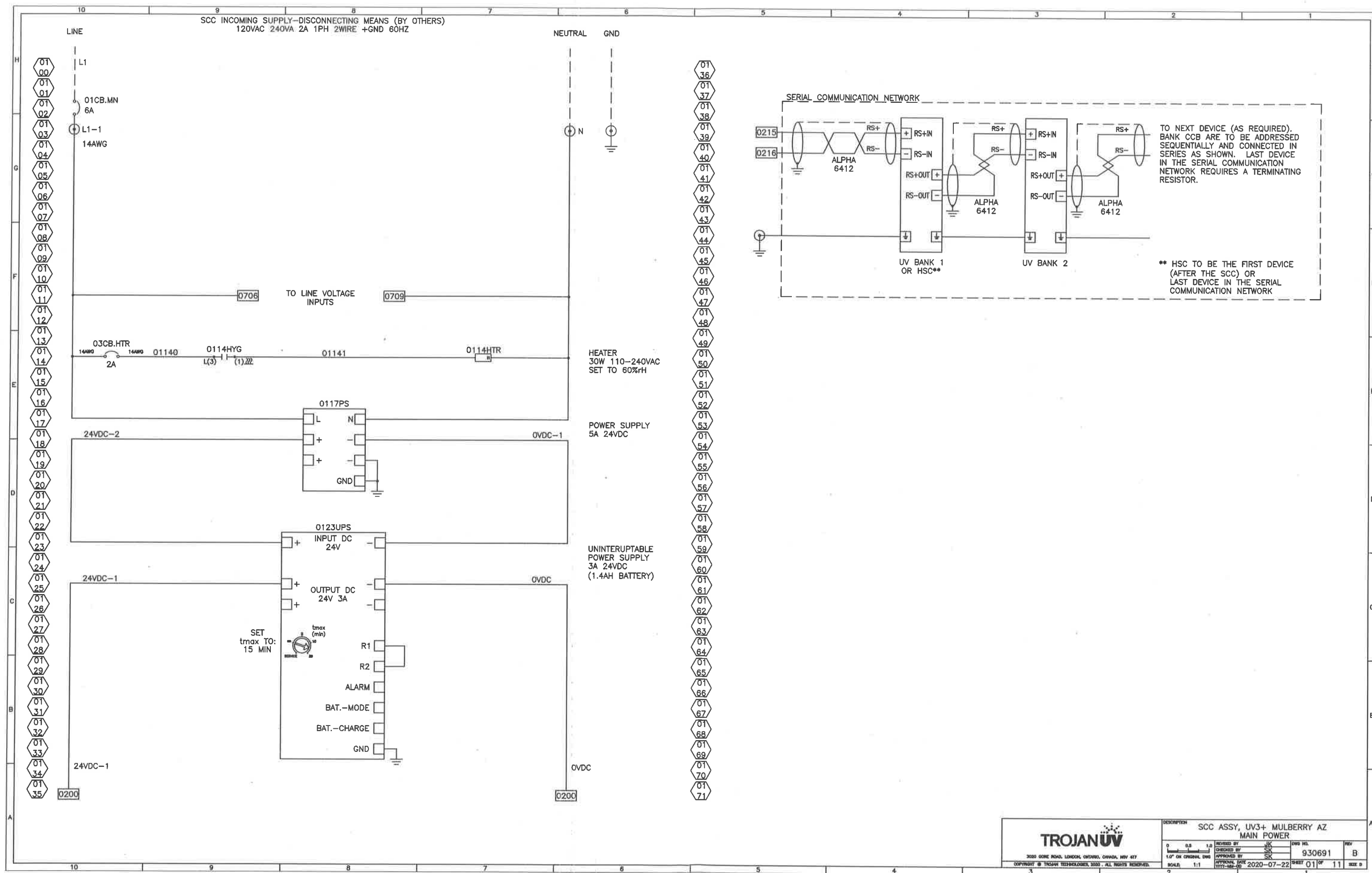
TROJAN UV

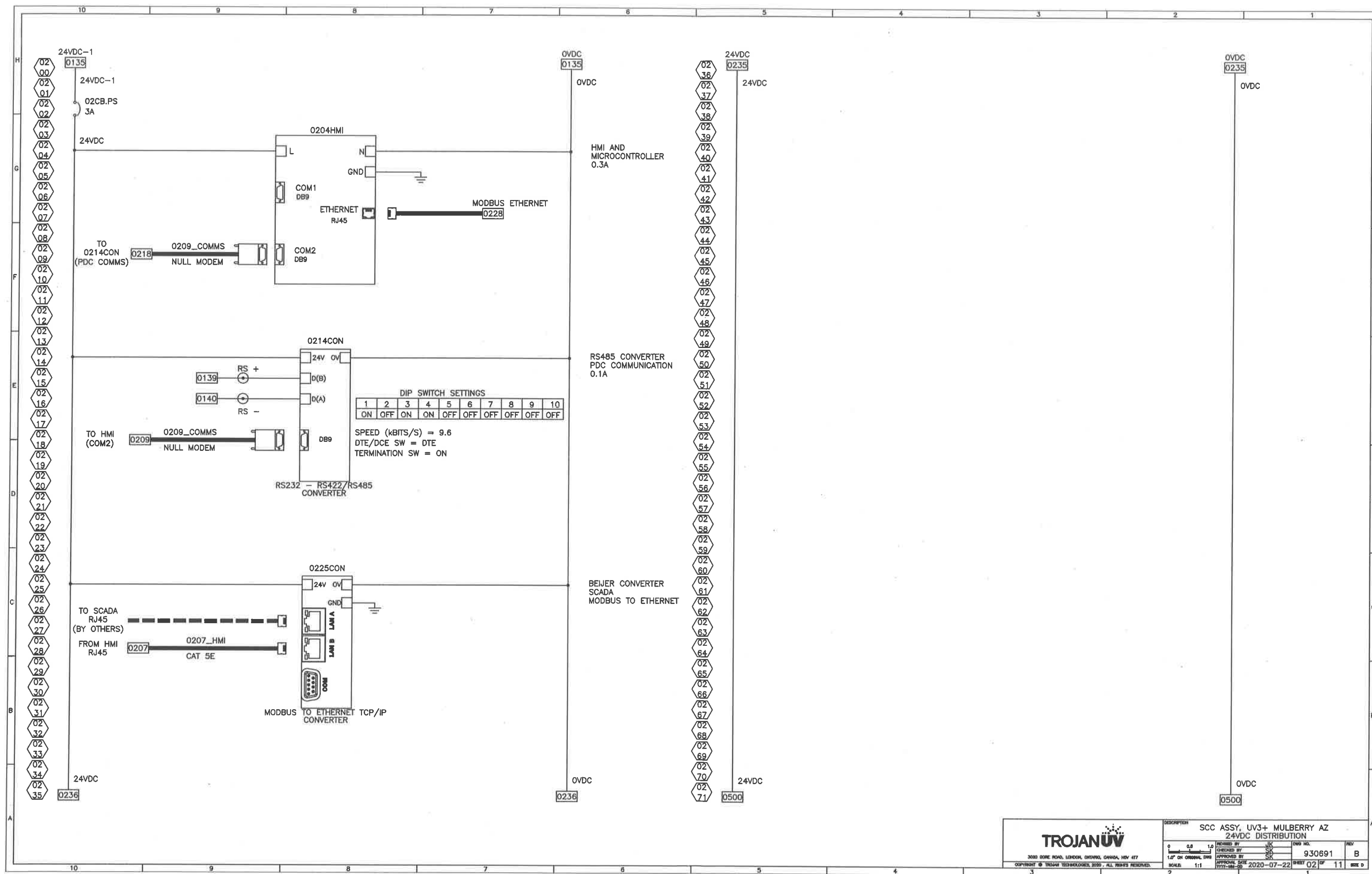
3080 BONE ROAD, LONDON, ONTARIO, CANADA, N6V 4T7
COPYRIGHT © TROJAN TECHNOLOGIES, 2020. ALL RIGHTS RESERVED.

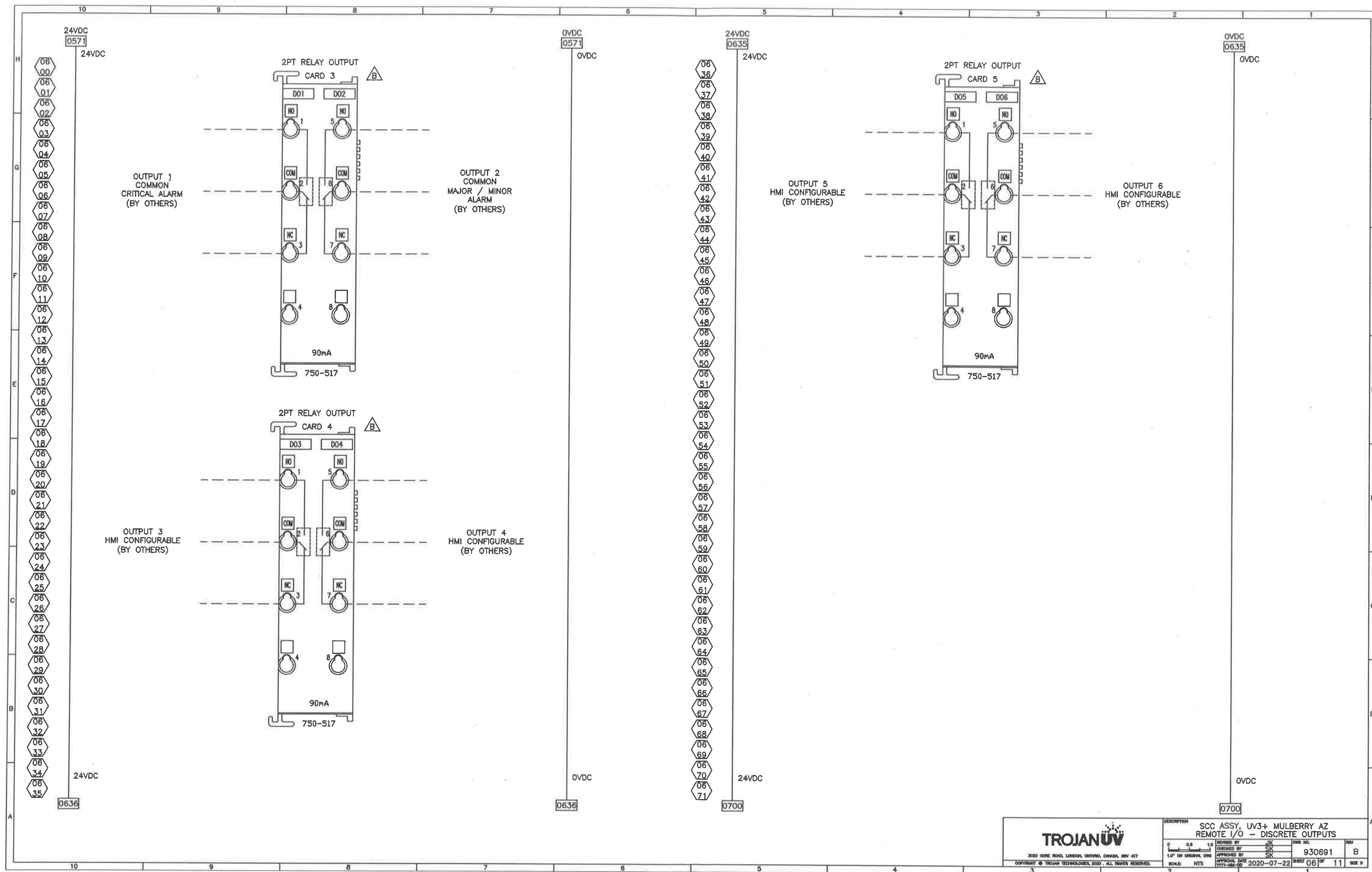
DESCRIPTION SCC ASSY, UV3+ MULBERRY AZ
TABLE OF CONTENTS

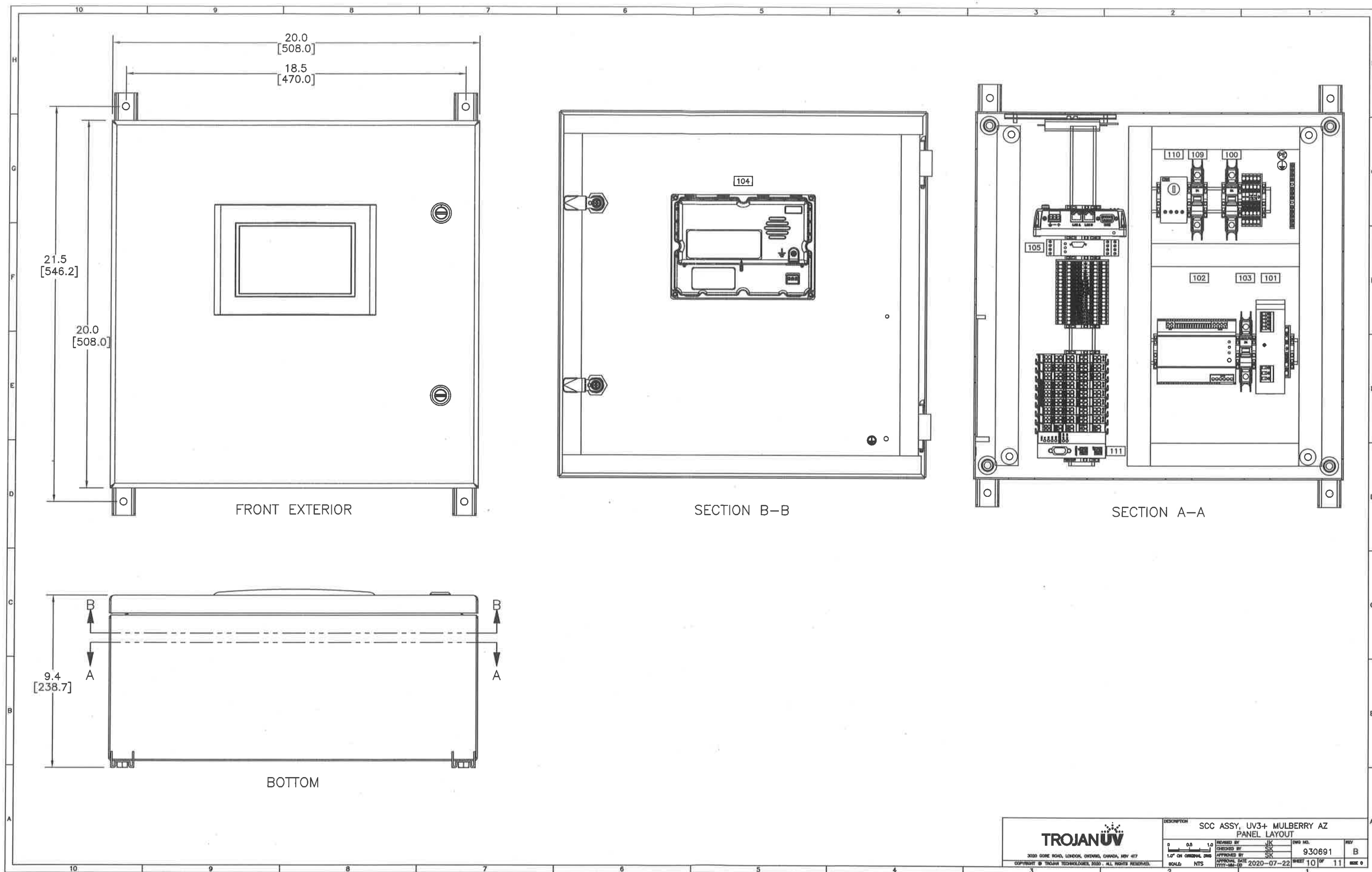


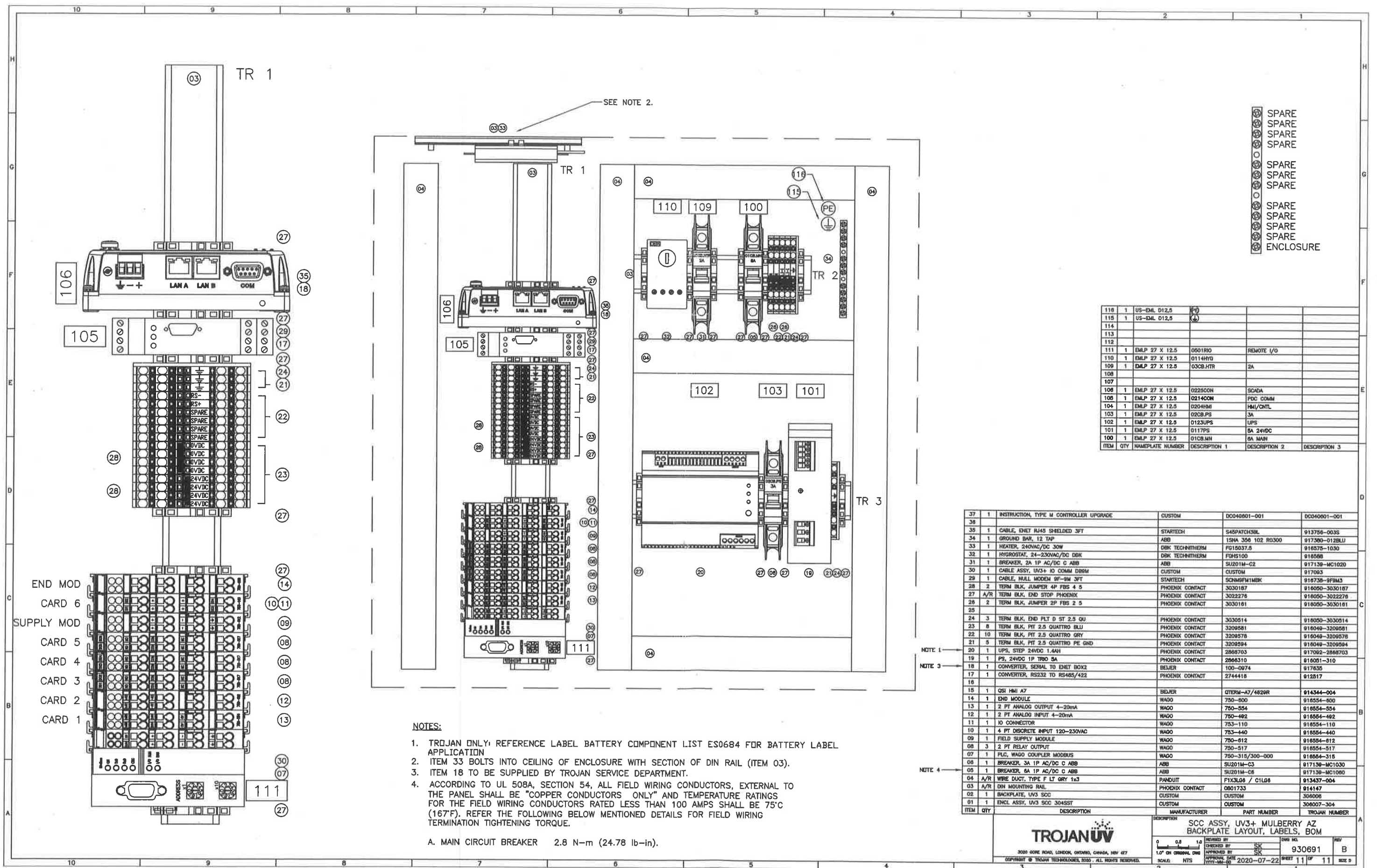
0 0.5 1.0
1/2" ON ORIGINAL DWG
SCALE NTS
DWG NO. 930691
REV B
SHEET 00 OF 11
SIZE D











[illegible]