



LAKE HAVASU CITY, ARIZONA
ADMINISTRATIVE SERVICES DEPARTMENT
◆ PROCUREMENT ◆

INVITATION TO BID
RUNWAY LIGHTS AND SIGNS IMPROVEMENT PROJECT
PROJECT NO. B25-PW-ARP-104015-500657
ADDENDUM NO. 3
APRIL 22, 2025

Attention is called to the following changes, additions, clarifications and/or deletions to the original solicitation, and they shall be considered in preparing submissions:

There is no change in the opening date. **Submissions are due no later than 3:00 p.m., Arizona Time, April 30, 2025**, at the City Clerk's Office, 2330 McCulloch Blvd. N., Lake Havasu City, AZ 86403 or electronically via DemandStar.

ITEM ONE (1): QUESTIONS AND ANSWERS

The following question was received after the pre-bid conference and site walk.

Question 1: "It is my understanding that the FAA does not allow runway edge lights to be partially LED and partially non-LED. In other words, runway night operation can only be resumed when all of the lights have been changed to LED. Therefore, I can't see how work can be completed in segments with the runway being operational at the end of each shift. Please advise."

Answer 1: That is correct. The FAA does not allow runway edge lights to be interspersed. As such, project activities must be planned and staffed in such a way as to restore the runway to operational condition by the end of each shift and permit the opening of the runway for daytime use. Including the final change over from incandescent to LED, which shall be completed during one nighttime closure.

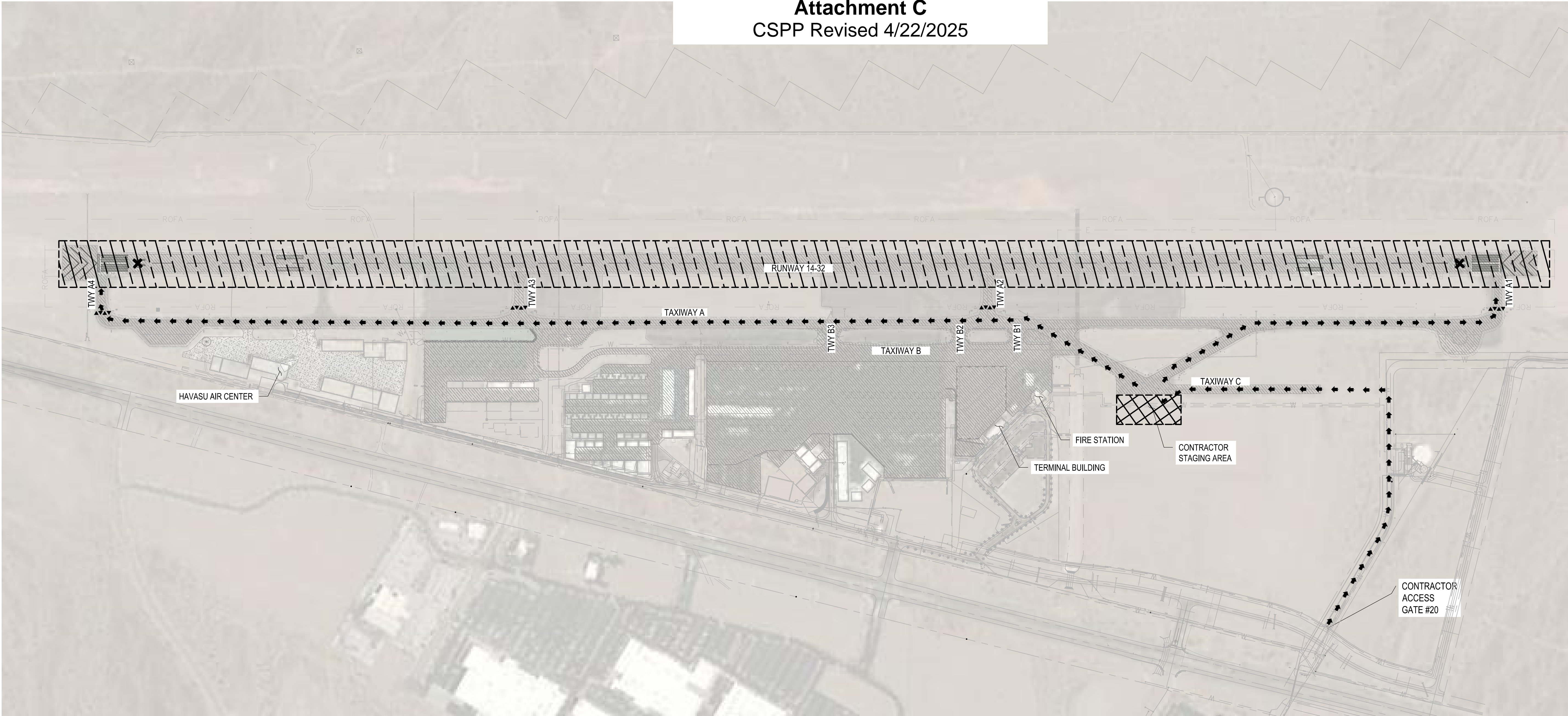
The objective is to complete the work during nighttime closures of the runway while keeping the runway open and lights operational for daytime use, and when nighttime closures are not in effect (e.g. weekends or nights of no work). See also Attachment C, the revised CSPP plan.

This clarification will also be added to the plans as provided herein by the OWNER:

1. Replace the Construction Safety and Phasing Plan (sheet GC101 (4 of 31)) of the Plans, with the revised Construction Safety and Phasing Plan enclosed as Attachment C.

Andrew Klos, CPPB
Senior Procurement Specialist

Attachment C
CSPP Revised 4/22/2025



B1 CONSTRUCTION SAFETY AND PHASING PLAN

SCALE: 1" = 300'

A

BARRICADE NOTES:

1. MAXIMUM SPACING BETWEEN BARRICADES SHALL BE 5 FEET. BARRICADES SHALL BE SET BACK 2 FEET FROM THE LIMITS OF CONSTRUCTION.
2. THE CONTRACTOR SHALL BE RESPONSIBLE FOR MAINTAINING PROPER POSITIONING OF ALL BARRICADES.
3. WATER-FILLED TYPE BARRICADES SHALL BE USED (SEE SPECIFICATIONS)
4. EACH BARRICADE SHALL HAVE TWO FLASHING LAMPS (DUSK TO DAWN).

A1 INTERLOCKING AIRFIELD BARRICADE DETAIL
SCALE: NOT TO SCALE

360° BATTERY/SOLAR POWERED RED FLASHING LAMP (DUSK TO DAWN)

6"x6" WIDE REFLECTIVE STRIPING INTERNATIONAL ORANGE AND WHITE

A2 LIGHTED CLOSED RUNWAY MARKING DETAIL
SCALE: NOT TO SCALE

L-893 LIGHTED CLOSED RUNWAY MARKER AS MANUFACTURED BY HALI-BRITE, INC., SHERWIN INDUSTRIES INC., OR APPROVED EQUAL. LIGHTED CLOSED RUNWAY MARKING SHALL BE PROVIDED BY CONTRACTOR. THE CONTRACTOR IS ALSO RESPONSIBLE FOR FUELING AND MAINTENANCE REQUIRED DURING CONSTRUCTION.

NOTES:

1. CLOSED RUNWAY MARKINGS SHALL BE PLACED AT EACH END OF THE RUNWAY DIRECTLY OR AS NEAR AS PRACTICABLE TO THE RUNWAY DESIGNATION NUMBERS.

A3 PHASING NOTES
SCALE: NOT TO SCALE

1. WORK SHALL BE COMPLETED WITHIN 40 CALENDAR DAYS.
2. ALL WORK WITHIN THE RUNWAY SAFETY AREA SHALL BE PERFORMED DURING NIGHTTIME RUNWAY CLOSURES.
3. NIGHTLY WORK HOURS WILL BE FROM 9 p.m. UNTIL 6 a.m.
4. RUNWAY LIGHTS SHALL BE OPERATIONAL WHENEVER THE RUNWAY IS OPEN TO AIRCRAFT OPERATIONS
5. LED AND INCANDESCENT LIGHTS SHALL NOT BE INTERSPERSED
6. THE SWITCHOVER TO FROM INCANDESCENT TO LED SHALL OCCUR DURING ONE NIGHTTIME RUNWAY CLOSURE

NOTE: THE OBJECTIVE IS TO COMPLETE THE WORK DURING NIGHTTIME CLOSURES OF THE RUNWAY WHILE KEEPING THE RUNWAY OPEN FOR DAYTIME USE, AND WHEN NIGHTTIME CLOSURES ARE NOT IN EFFECT (E.G. WEEKENDS OR NIGHTS OF NO WORK).

A4 LEGEND

WORK AREA 'A' - RUNWAY 14-32 CLOSED

CONTRACTOR STAGING AREA

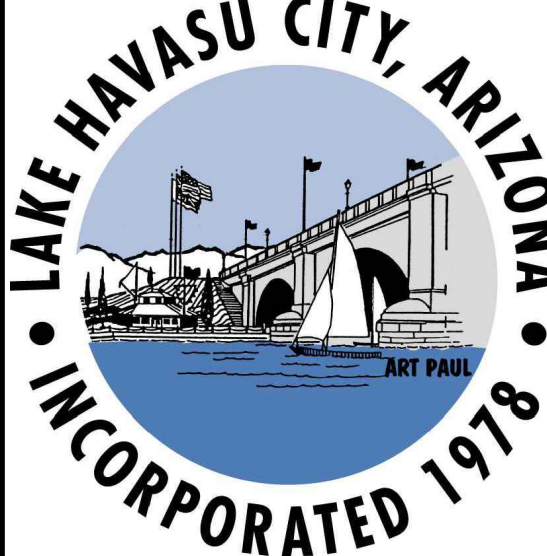
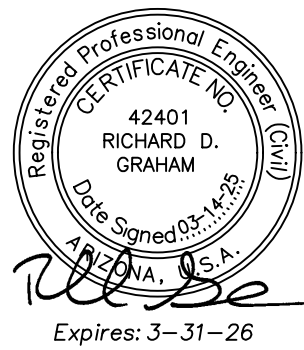
LOW PROFILE BARRICADES - SEE DETAIL A1, THIS SHEET

CONTRACTOR ACCESS/HAUL ROUTE

LIGHTED CLOSED RUNWAY MARKING - SEE DETAIL A2, THIS SHEET



C&S Engineers, Inc.
2575 East Camelback Rd
Suite 740
Phoenix, Arizona 85016
Phone: 602-997-7536
Fax: 602-755-2094
www.cscos.com



RUNWAY LIGHTS AND SIGNS
IMPROVEMENT PROJECT

LAKE HAVASU CITY MUNICIPAL AIRPORT
LAKE HAVASU CITY, AIRIZONA

MARK	DATE	DESCRIPTION
	4/22/25	Addendum 3, Attachment C
REVISIONS		
PROJECT NO: K33004009		
DATE: MARCH 2025		
DRAWN BY: STB		
DESIGNED BY: AS		
CHECKED BY: RJB		

CONSTRUCTION
SAFETY AND
PHASING PLAN

GC101