

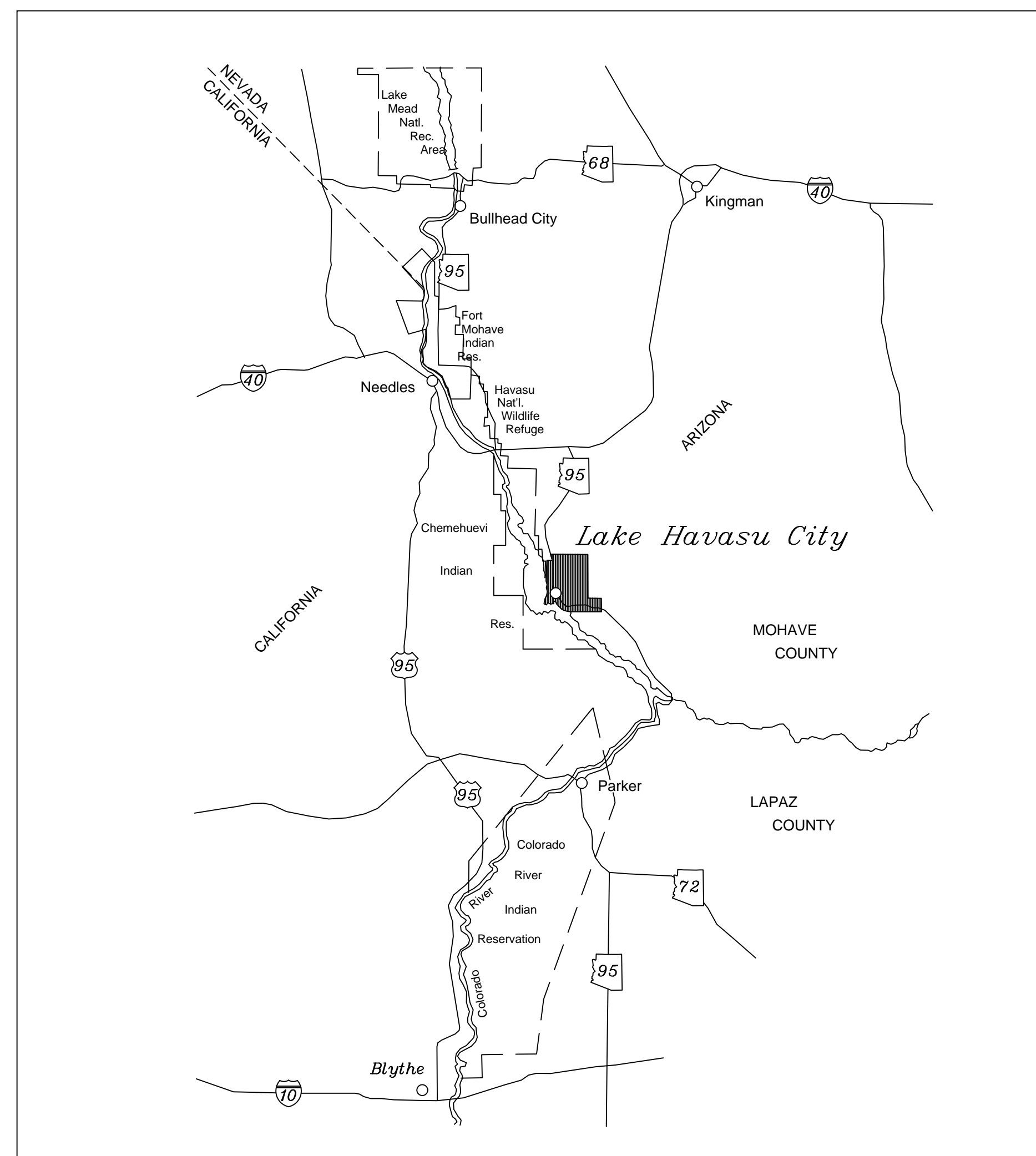


**CONTRACT DRAWINGS
FOR THE CONSTRUCTION OF**

AWOS REPLACEMENT

LAKE HAVASU CITY MUNICIPAL AIRPORT

LAKE HAVASU CITY, ARIZONA



LOCATION MAP

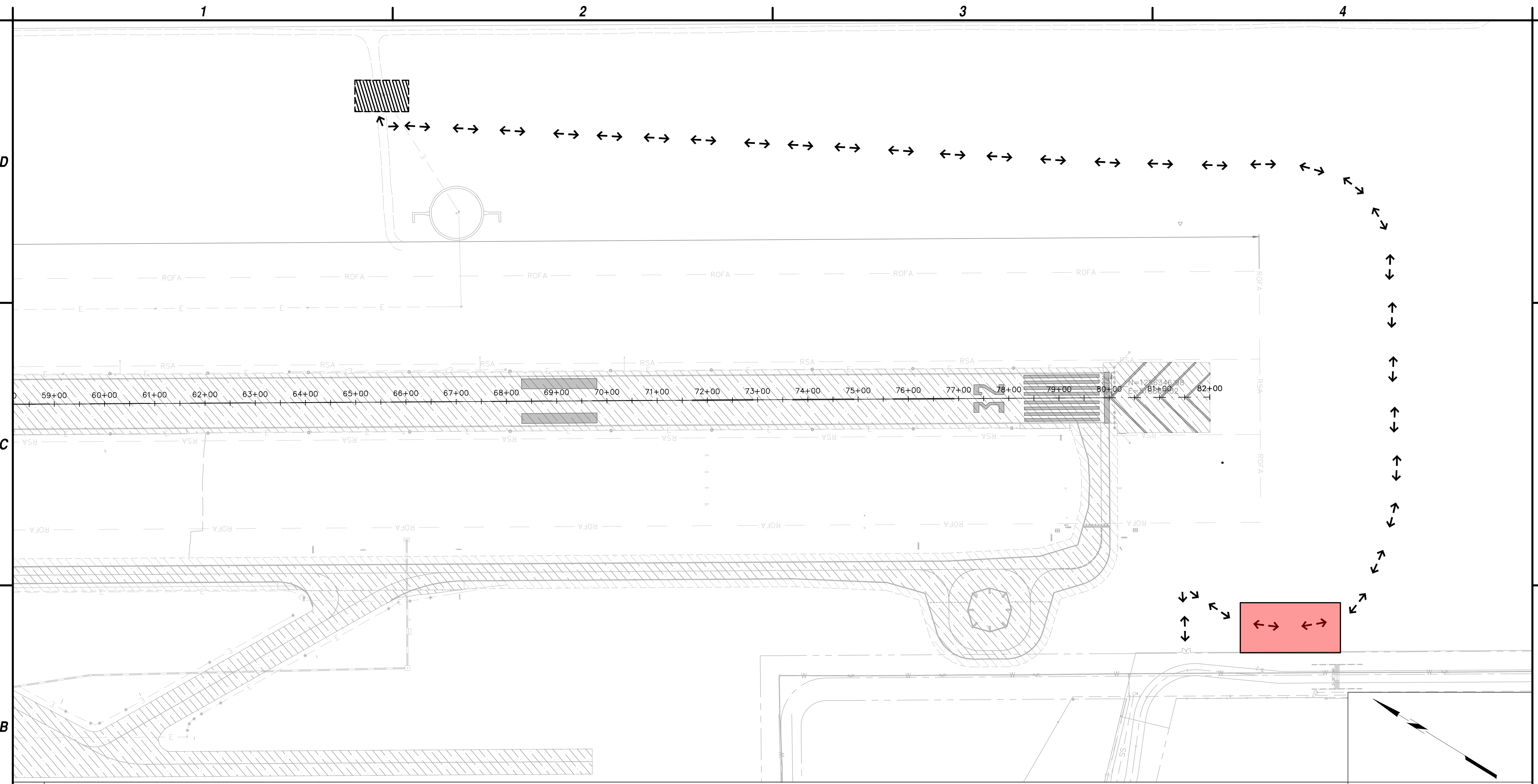
LHC: 104011

ADOT GRANT NO: E3S2Z01C

C&S PROJECT: K33.004.004

JULY 2023





B1 CONSTRUCTION SAFETY AND PHASING PLAN
SCALE: NOT TO SCALE

A1 LEGEND
SCALE: NOT TO SCALE

LEGEND:	
	WORK AREA HAUL ROUTE
	WORK AREA LIMIT
	WORK AREA A
	CONTRACTOR STAGING AREA
	CONTRACTOR WORK AREA

- A2 GENERAL CSPP NOTES**
SCALE: NOT TO SCALE
- ALL PERSONAL VEHICLES SHALL BE PARKED OUTSIDE THE THE FENCE.
 - THE STAGING AREA IS NOT SECURED. FENCING & SECURITY SHALL BE THE RESPONSIBILITY OF THE CONTRACTOR.
 - CONTRACTOR SHALL COMPLY WITH THE CONSTRUCTION SAFETY PLAN.
 - AIRPORT CTAF FREQUENCY = 122.7
 - MAXIMUM EQUIPMENT HEIGHT = 25 FEET
 - CONSTRUCTION SHALL BE COMPLETED IN 21 CONSECUTIVE CALENDAR DAYS.
 - TAXIING AIRCRAFT SHALL ALWAYS HAVE THE RIGHT OF WAY. CONSTRUCTION VEHICLES SHALL YIELD TO TAXIING AIRCRAFT AT ALL TIMES IN ALL AREAS OF THE AIRPORT. THIS INCLUDES YIELDING TO APPROACHING AIRCRAFT WHEN CROSSING THE RPZ OF RUNWAY 32 ON THE HAUL ROUTE TO ACCESS THE WORK AREA.
 - CONSTRUCTION VEHICLES MUST BE MARKED WITH AMBER BEACONS (DAY/NIGHT) OR ORANGE AND WHITE FLAGS DURING DAYLIGHT HOURS.
 - THE AIRPORT ACCESS GATE IS TO BE CLOSED AND LOCKED AT ALL TIMES. THE CONTRACTOR SHALL SHALL NOTIFY THE AIRPORT IF THE ACCESS GATE IS TO BE LEFT OPEN FOR ANY PERIOD DURING
 - THE PROJECT, AND PROVIDE QUALIFIED PERSONNEL APPROVED BY THE AIRPORT TO ENSURE ONLY AUTHORIZED VEHICLES USE THE ACCESS GATE.
 - ALL ROADS USED TO ACCESS SITE SHALL BE MAINTAINED. AT THE COMPLETION OF ALL CONSTRUCTION ACTIVITY, ROADS SHALL BE OPENED AT SAME OR BETTER CONDITION (TYP.).
 - AT NO TIME SHALL CONTRACTOR PERSONNEL OR EQUIPMENT BE WITHIN 150' OF AN ACTIVE RUNWAY CENTERLINE OR AN ACTIVE TAXIWAY(S) WITHOUT APPROVAL FROM AIRPORT.
 - ALL CONSTRUCTION DEBRIS INCLUDING DIRT TRACKING OUTSIDE THE STAGING AREA(S) SHALL BE CLEANED UP IMMEDIATELY.
 - CONTRACTOR TO PERFORM A FOD INSPECTION BEFORE THE END OF EACH SHIFT.

A4 NOT USED
SCALE: NOT TO SCALE

MARK	DATE	DESCRIPTION
REVISIONS		
PROJECT NO: K33004004		
DATE: JULY 2023		
DRAWN BY: MDV		
DESIGNED BY: MDV		
CHECKED BY: TDR		



C&S Engineers, Inc.
2575 East Camelback Rd
Suite 740
Phoenix, Arizona 85016
Phone: 602-997-7536
Fax: 602-997-7592
www.cscos.com



**AWOS
REPLACEMENT PROJECT**
LAKE HAVASU CITY MUNICIPAL AIRPORT
LAKE HAVASU CITY, ARIZONA

MARK	DATE	DESCRIPTION
REVISIONS		
PROJECT NO: K33004004		
DATE: JULY 2023		
DRAWN BY: MDV		
DESIGNED BY: MDV		
CHECKED BY: TDR		

**CONSTRUCTION
SAFETY AND
PHASING PLAN**

G0.2

Jul 10, 2023 - 5:04pm
 F:\Project\K33 - Lake Havasu City, AZ\K33.004.004 - Lake Havasu City, AZ\K33.004.004 - I.O. 4 - AWOS Replacement\Design\CADD\Sheet Files\K33.004.004 - CSPP.dwg

GENERAL ELECTRICAL REQUIREMENTS

THE COMPLETED INSTALLATION SHALL CONFORM TO ALL APPLICABLE FEDERAL, FAA, STATE AND LOCAL CODE ORDINANCES AND REGULATIONS. CONTRACTOR SHALL OBTAIN NECESSARY PERMITS AND INSPECTIONS REQUIRED BY THE AUTHORITIES HAVING JURISDICTION. ALL WORK SHALL BE DONE IN A NEAT, WORKMANLIKE, FINISHED, AND SAFE MANNER, ACCORDING TO THE LATEST PUBLISHED N.E.C.A. STANDARDS OF INSTALLATION, UNDER COMPETENT SUPERVISION. INSTALL GROUNDING AS REQUIRED BY THE CODE(S) AND FAA ADVISORY CIRCULAR REQUIREMENTS AS DETAILED PER THIS PLAN SET.

VISIT THE SITE PRIOR TO BIDDING TO BECOME FAMILIAR WITH EXISTING CONDITIONS AND ALL OTHER FACTORS WHICH MAY AFFECT THE EXECUTION OF THIS WORK. INCLUDE ALL RELATED COSTS IN THE INITIAL BID PROPOSAL.

ALL MATERIALS SHALL BE NEW AND OF THE BEST QUALITY, MANUFACTURED IN ACCORDANCE WITH NEMA, ANSI, U.L. OR OTHER APPLICABLE STANDARDS. THE USE OF MANUFACTURER'S NAMES, MODELS, AND NUMBERS IS INTENDED TO ESTABLISH STYLE, QUALITY, APPEARANCE, USEFULNESS AND BID PRICE. PROPOSED SUBSTITUTIONS SHALL BE SUBMITTED IN WRITING AND REVIEWED BY THE ENGINEER BEFORE ORDERING.

PROTECT ALL ELECTRICAL MATERIAL AND EQUIPMENT INSTALLED UNDER THIS DIVISION AGAINST DAMAGE BY OTHER TRADES, WEATHER CONDITIONS OR ANY OTHER CAUSES. EQUIPMENT FOUND DAMAGED OR IN OTHER THAN NEW CONDITION WILL BE REJECTED AS DEFECTIVE.

LEAVE THE SITE CLEAN, REMOVE ALL DEBRIS, EMPTY CARTONS, TOOLS, CONDUIT, WIRE SCRAPS AND ALL MISCELLANEOUS SPARE EQUIPMENT AND MATERIALS USED IN THE WORK DURING CONSTRUCTION. ALL COMPONENTS SHALL BE FREE OF DUST, GRIT AND FOREIGN MATERIALS, LEFT AS NEW BEFORE FINAL ACCEPTANCE OF WORK.

EXPOSED CONDUITS TO BE GALVANIZED RIGID STEEL, MINIMUM SIZE 3/4", UNLESS OTHERWISE NOTED ON THE PLANS.

ALL SAFETY SWITCHES AND OTHER DISTRIBUTION AND CONTROL ELECTRICAL EQUIPMENT SHALL BE U.L. LISTED AND RATED FOR HEAVY DUTY SERVICE.

ALL WIRING DEVICES SHALL BE SPECIFICATION GRADE.

ALL ELECTRICAL EQUIPMENT, CONDUIT, WIRING, BOXES, ETC. SHALL BE SUBMITTED TO THE ENGINEER FOR REVIEW PRIOR TO ORDERING. THE SUBMITTALS SHALL BE NEATLY GROUPED AND ORGANIZED. PERTINENT INFORMATION SHALL BE HIGHLIGHTED, AND THE SPECIFIC PRODUCT SHALL BE IDENTIFIED. ALL SUBMITTALS SHALL BE COMPLETE, AND PRESENTED IN ONE PACKAGE. THE SUBMITTAL SHALL INCLUDE A COMPLETE LIST OF THE EQUIPMENT AND MATERIALS, INCLUDING THE MANUFACTURER'S NAME, PRODUCT SPECIFICATION, DESCRIPTIVE DATA, TECHNICAL LITERATURE, PERFORMANCE CHARTS, CATALOG CUTS, INSTALLATION INSTRUCTIONS, AND SPARE PART RECOMMENDATIONS FOR EACH DIFFERENT ITEM OF THE EQUIPMENT SPECIFIED.

CONDUIT/CONDUCTOR RUNS SHOWN ARE DIAGRAMMATICAL ONLY. THE BEST FINAL CONDUIT ROUTING SHALL BE AS DETERMINED BY THE ELECTRICAL CONTRACTOR AT THE TIME OF CONSTRUCTION. THE ENGINEER OR REPRESENTATIVE MUST FIELD REVIEW CONTRACTOR'S PROPOSED CONDUIT ROUTING AND HANDHOLE LOCATIONS PRIOR TO ANY SAW CUTTING OR EXCAVATIONS.

IT IS THE OBLIGATION OF THE CONTRACTOR TO ORGANIZE HIS WORK, SO THAT A COMPLETE ELECTRICAL, INSTRUMENTATION, AND CONTROL SYSTEM FOR THE FACILITY WILL BE PROVIDED, AND WILL BE SUPPORTED BY ACCURATE SHOP AND RECORD DRAWINGS, AND O & M MANUALS.

PRIOR TO PERFORMING UNDERGROUND EXCAVATION, THE CONTRACTOR SHALL CONTACT THE UNDERGROUND UTILITY COMPANY/OWNER TO OBTAIN FIELD UNDERGROUND UTILITIES LOCATION MARKING. THE CONTRACTOR SHALL UNCOVER, AHEAD OF CONSTRUCTION, ALL LINES BEING TIED INTO AND ALL INTERSECTING ELECTRICAL LINES AND UTILITIES AS SHOWN ON THE PLANS OR MARKED BY BLUE STAKE TO VERIFY THEIR LOCATION AND DEPTH. CONTRACTOR SHALL ASSUME THAT ALL EXISTING DUCTBANKS THAT CROSS EXISTING AIRFIELD PAVEMENTS OR ARE WITHIN RUNWAY OR TAXIWAY SAFETY AREAS ARE ENCASED. UTILITY SERVICES AND ALL EXISTING ELECTRICAL LINES SHALL BE LOCATED AND PROTECTED BY THE CONTRACTOR. COORDINATE WITH ENGINEER AND/OR APPROPRIATE UTILITY COMPANY. ALL PRECAUTIONS SHALL BE USED WHILE WORKING NEAR ALL UTILITIES, TO AVOID INJURY OR DEATH TO PERSONNEL, PROPERTY DAMAGE AND/OR INTERRUPTION OF SERVICE.

THE CONTRACTOR SHALL ALLOW TWO WEEKS FOR REVIEW OF THE SUBMITTALS BY THE ENGINEER. THIS PERIOD SHALL BE CALCULATED FROM THE TIME THE ENGINEER HAS RECEIVED THE SUBMITTALS TO THE TIME THE SUBMITTALS LEAVE THE ENGINEER'S OFFICE. THE CONTRACTOR SHALL BE RESPONSIBLE FOR ALL DELAYS RESULTING FROM "FURNISH AS NOTED", "REVISE AND RESUBMIT", "NOT REVIEWED" AND/OR "REJECTED" SUBMITTALS. INCOMPLETE SUBMITTALS WILL BE RETURNED FOR RESUBMITTAL WITH NO CHANGE BEING ALLOWED TO THE CONSTRUCTION SCHEDULE. SUBMITTALS SHALL INCLUDE COMPREHENSIVE INFORMATION AND TECHNICAL DATA, CLEARLY IDENTIFYING AND SUBSTANTIATING THE CHARACTERISTICS REQUIRED BY THE CONSTRUCTION DOCUMENTS.

ALL REQUESTS FOR INFORMATION (RFIs) SHALL BE PRESENTED TO THE ENGINEER ALLOWING TWO WEEKS FOR RESPONSE. THIS PROCESS SHALL BE CONSIDERED IN THE SCHEDULING PROCESS AND SHALL NOT CAUSE A DELAY IN THE COMPLETION OF THE PROJECT.

ELECTRICAL ABBREVIATIONS:

- ACU ACQUISITION CONTROL UNIT
AIC AMP INTERRUPTING CABLE
AWOS AUTOMATED WEATHER OBSERVATION SYSTEM
BCG BARE COPPER GROUND
CDP CENTRAL DATA PLATFORM
CE CONCRETE ENCASED
CKT CIRCUIT
DB DIRECT BURIED
DCP DATA COLLECTION PACKAGE
EMT ELECTRIC METALLIC TUBING
FAA FEDERAL AVIATION ADMINISTRATION
GRS GALVANIZED RIGID STEEL
HH HANDHOLE
JC JUNCTION CAN
LED LIGHT EMITTING DIODE
LF LINEAR FEET
NEC NATIONAL ELECTRICAL CODE
N.E.C.A. NATIONAL ELECTRICAL CONTRACTORS ASSOCIATION
NEMA NATIONAL ELECTRICAL MANUFACTURERS ASSOCIATION
NPI NON PAY ITEM
OFZ OBJECT FREE ZONE
OID OPERATOR INTERACTION DEVICE
PPE PERSONAL PROTECTIVE EQUIPMENT
PVC POLYVINYL CHLORIDE
ROFA RUNWAY OBJECT FREE AREA
RSA RUNWAY SAFETY AREA
SES SERVICE ENTRANCE SECTION
TOFA TAXIWAY OBJECT FREE AREA
TSA TAXIWAY SAFETY AREA
TYP TYPICAL

SELECTED FAA ADVISORY CIRCULARS FOR AIRPORT PROJECTS: (MOST RECENT VERSION AT TIME OF CONSTRUCTION)

- 150/5220-16 CHANGE 1 AUTOMATED WEATHER OBSERVATION SYSTEM (AWOS) FOR NON-FEDERAL APPLICATIONS
150/5345-53 AIRPORT LIGHTING EQUIPMENT CERTIFICATION PROGRAM
150/5370-2 OPERATIONAL SAFETY ON AIRPORTS DURING CONSTRUCTION
150/5345-7 SPECIFICATIONS FOR L-824 UNDERGROUND ELECTRICAL CABLE FOR AIRPORT CIRCUITS
150/5370-10 STANDARDS FOR SPECIFYING CONSTRUCTION OF AIRPORTS

ELECTRICAL LEGEND:

(UNLESS OTHERWISE NOTED ON PLANS)

- NEW CONDUIT AND CONDUCTORS (QUANTITY AND SIZE AS INDICATED ON PLAN SHEETS)
EXISTING ELECTRICAL CONDUIT AND CONDUCTOR
EXISTING PULLBOX/HANDHOLE
EXISTING ELEVATED EDGE LIGHT

SHEET INDEX:

- E0.1 ELECTRICAL LEGEND AND NOTES
E1.1 ELECTRICAL INSTALLATION PLAN
E1.2 ELECTRICAL INSTALLATION PLAN
E2.1 AWOS INSTALLATION AND GROUNDING DETAILS
E3.1 GROUNDING DETAIL
E4.1 PANEL SCHEDULES AND SINGLE LINE DIAGRAM



C&S Engineers, Inc.
2575 East Camelback Rd
Suite 740
Phoenix, Arizona 85016
Phone: 602-997-7536
Fax: 602-997-7592
www.cscos.com

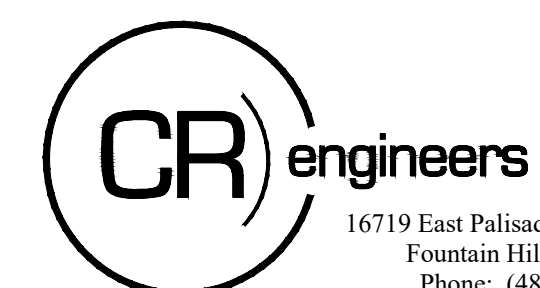


AWOS REPLACEMENT PROJECT
LAKE HAVASU CITY MUNICIPAL AIRPORT
LAKE HAVASU CITY, AIRIZONA

Table with columns: MARK, DATE, DESCRIPTION. Includes project info: PROJECT NO: K33004004, DATE: JULY 2023, DRAWN BY: JBW, DESIGNED BY: JCA, CHECKED BY: CA

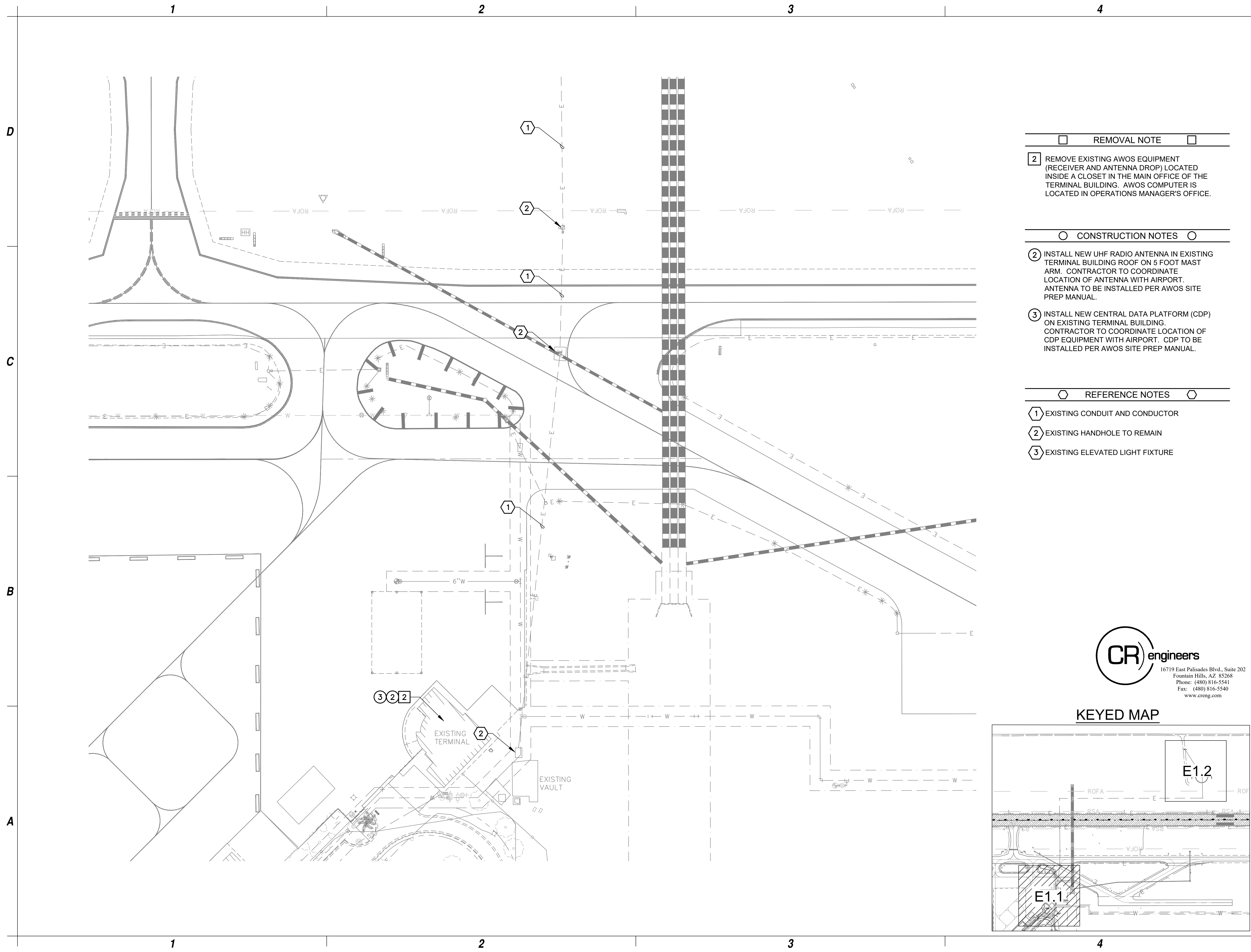
ELECTRICAL LEGEND AND NOTES

E0.1



16719 East Palisades Blvd., Suite 202
Fountain Hills, AZ 85268
Phone: (480) 816-5541
Fax: (480) 816-5540
www.creng.com

Jul 10, 2023 - 1:01pm
C:\PROJECTS\22000\22040_Lake_Havasu_Airport_AWOS_Replacement\CAD\CAD SHEETS\22040_E.L.O. ELECTRICAL LEGEND AND NOTES.dwg



REMOVAL NOTE

- 2 REMOVE EXISTING AWOS EQUIPMENT (RECEIVER AND ANTENNA DROP) LOCATED INSIDE A CLOSET IN THE MAIN OFFICE OF THE TERMINAL BUILDING. AWOS COMPUTER IS LOCATED IN OPERATIONS MANAGER'S OFFICE.

CONSTRUCTION NOTES

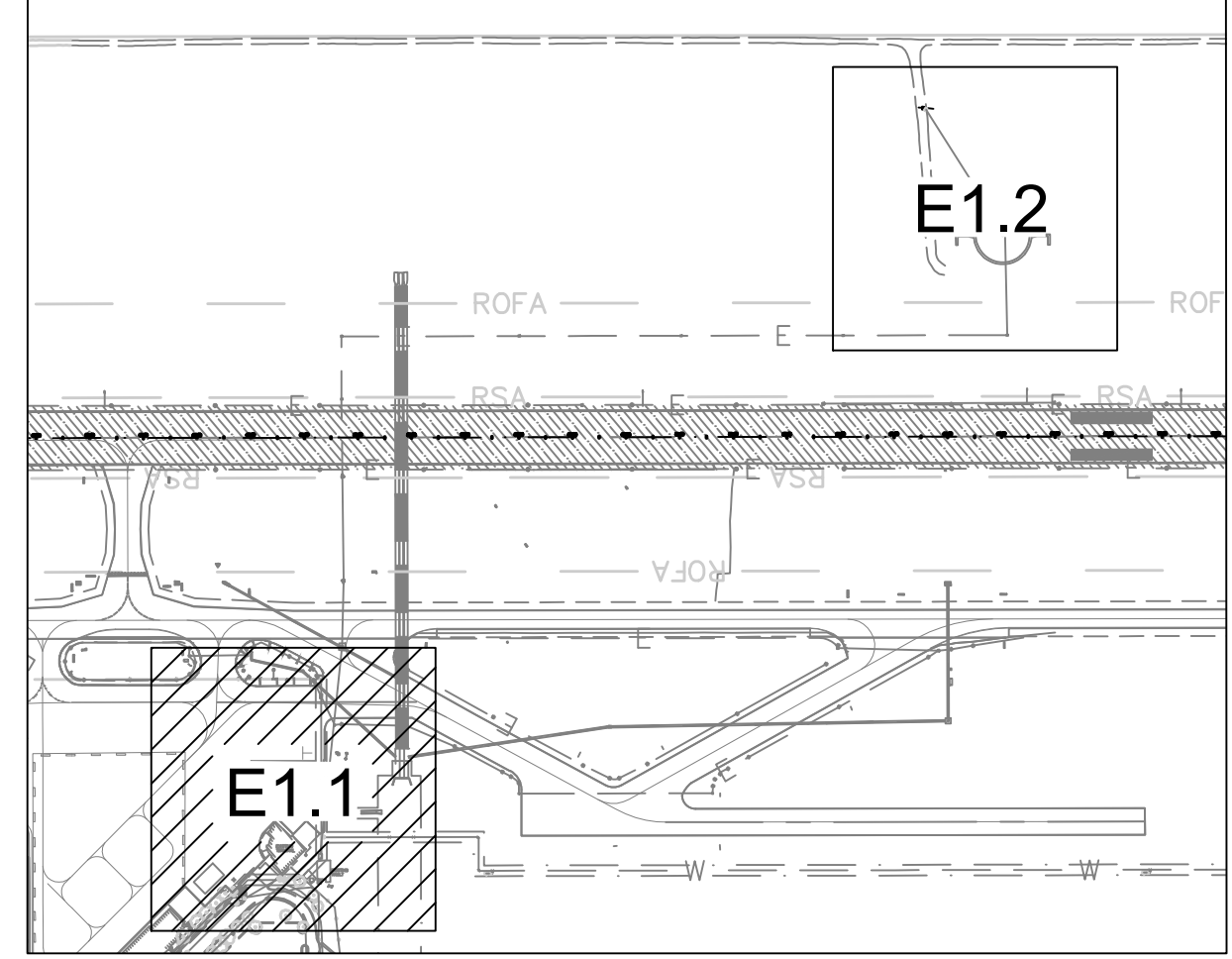
- 2 INSTALL NEW UHF RADIO ANTENNA IN EXISTING TERMINAL BUILDING ROOF ON 5 FOOT MAST ARM. CONTRACTOR TO COORDINATE LOCATION OF ANTENNA WITH AIRPORT. ANTENNA TO BE INSTALLED PER AWOS SITE PREP MANUAL.
- 3 INSTALL NEW CENTRAL DATA PLATFORM (CDP) ON EXISTING TERMINAL BUILDING. CONTRACTOR TO COORDINATE LOCATION OF CDP EQUIPMENT WITH AIRPORT. CDP TO BE INSTALLED PER AWOS SITE PREP MANUAL.

REFERENCE NOTES

- 1 EXISTING CONDUIT AND CONDUCTOR
- 2 EXISTING HANDHOLE TO REMAIN
- 3 EXISTING ELEVATED LIGHT FIXTURE

CR engineers
 16719 East Palisades Blvd., Suite 202
 Fountain Hills, AZ 85268
 Phone: (480) 816-5541
 Fax: (480) 816-5540
 www.creng.com

KEYED MAP



C&S Engineers, Inc.
 2575 East Camelback Rd
 Suite 740
 Phoenix, Arizona 85016
 Phone: 602-997-7536
 Fax: 602-997-7592
 www.cscos.com



**AWOS
 REPLACEMENT PROJECT**

**LAKE HAVASU CITY MUNICIPAL AIRPORT
 LAKE HAVASU CITY, ARIZONA**

MARK	DATE	DESCRIPTION
REVISIONS		
		PROJECT NO: K33004004
		DATE: JULY 2023
		DRAWN BY: JBW
		DESIGNED BY: JCA
		CHECKED BY: CA

**ELECTRICAL
 INSTALLATION
 PLAN**

E1.1

Jul 10, 2023 10:45am
 C:\PROJECTS\22000\22040_Lake_Havasu_Airport_AWOS_Replacement\CAD\22040_E1.1_ELECTRICAL_INSTALLATION.dwg

1

2

3

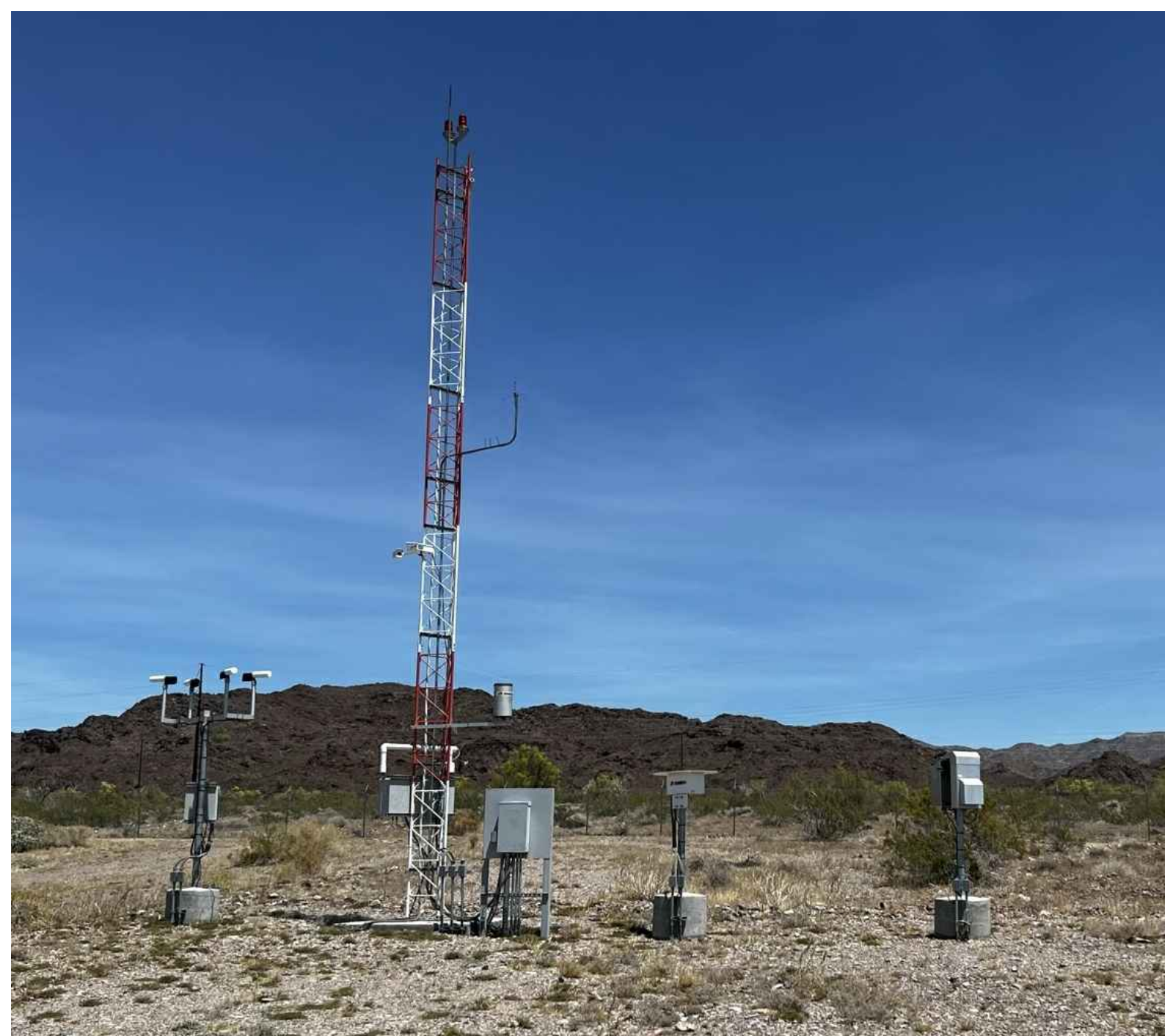
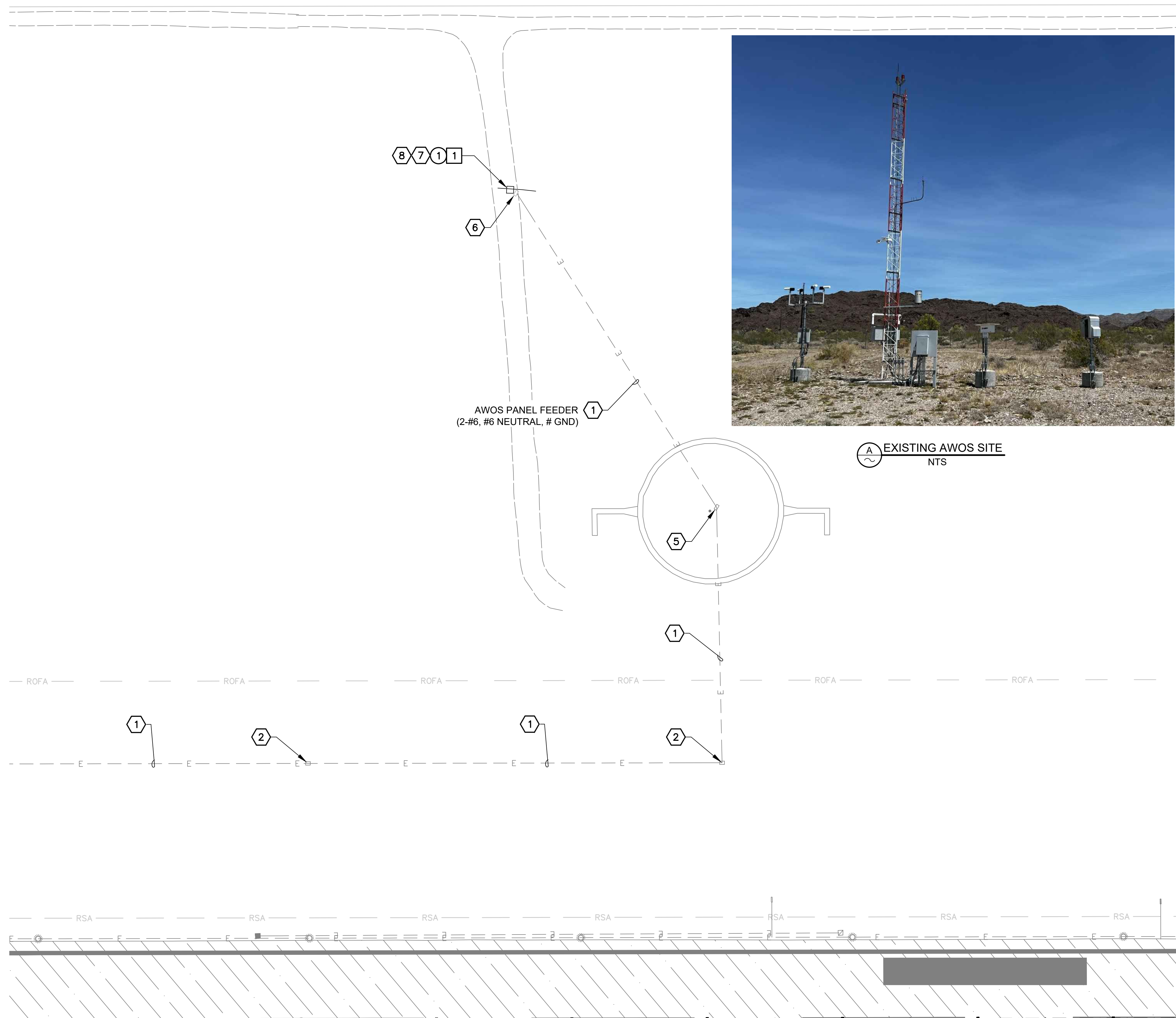
4

D

C

B

A



REMOVAL NOTE

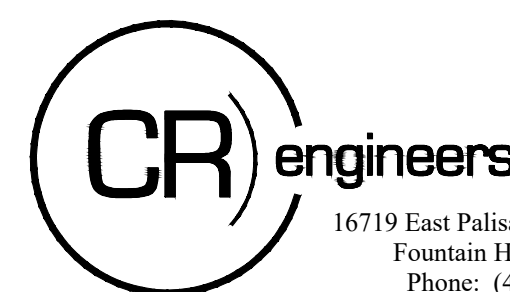
- 1 REMOVE EXISTING AWOS EQUIPMENT, TOWER AND CABLES. EXISTING FOUNDATIONS, BASES, CONDUIT AND GROUNDING TO REMAIN.

CONSTRUCTION NOTES

- 1 INSTALL NEW AWOS III P/T EQUIPMENT ON EXISTING PADS AND FOUNDATIONS PER AWOS MANUFACTURER SITE PREP MANUAL. EXISTING 4/0 GROUNDING CONDUCTORS AND CONDUIT TO BE USED IF FOUND IN SUITABLE CONDITIONS AND IN ACCORDANCE TO AWOS SITE PREP MANUAL. SEE SHEET E2.1 FOR AWOS GROUNDING AND INSTALLATION DETAILS.

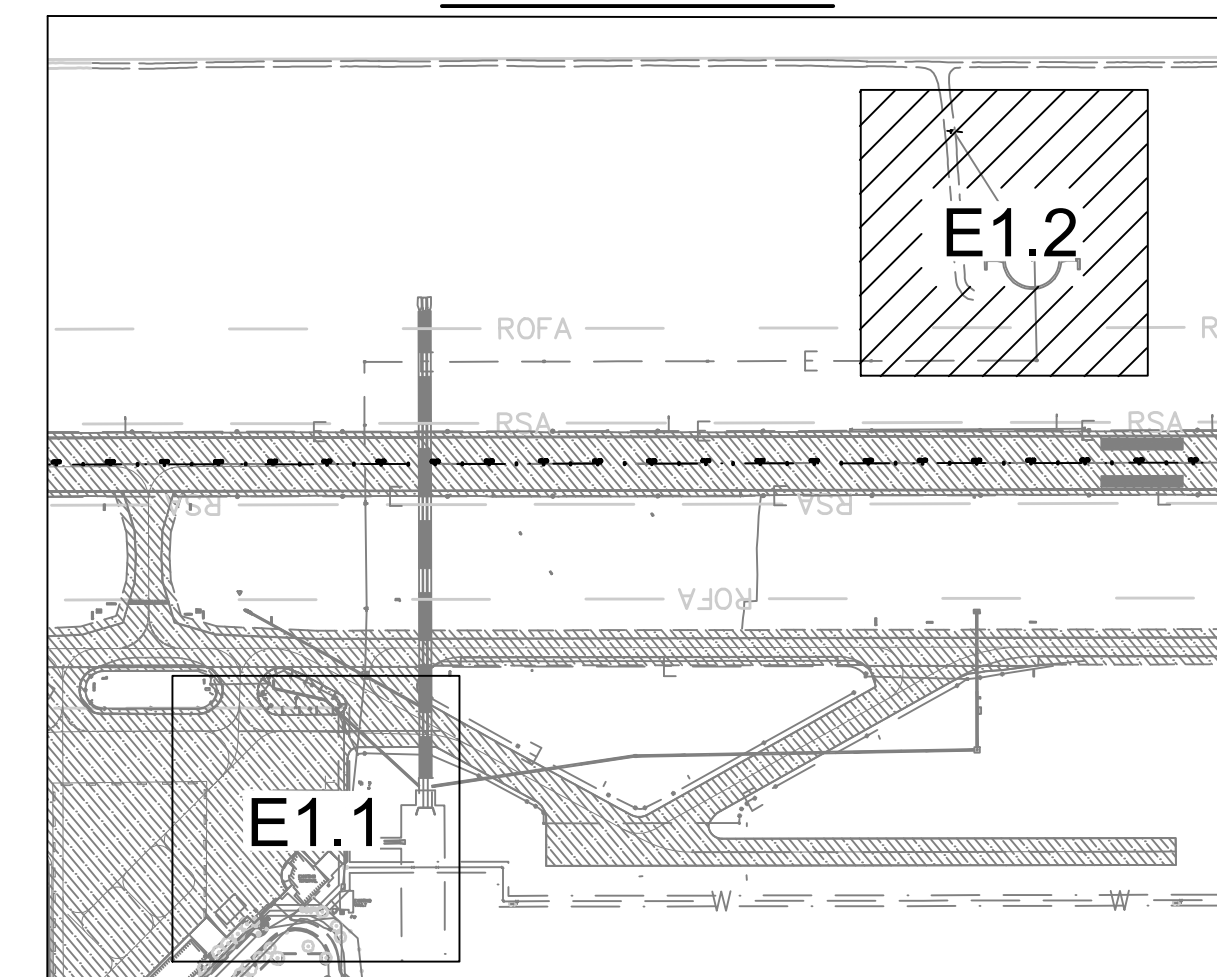
REFERENCE NOTES

- 1 EXISTING CONDUIT AND CONDUCTOR
- 2 EXISTING HANDHOLE TO REMAIN
- 4 EXISTING CONDUIT
- 5 EXISTING WINDCONE AND 60A WINDCONE PANEL
- 6 EXISTING AWOS POWER EQUIPMENT
- 7 EXISTING AWOS
- 8 CONTRACTOR TO PROVIDE AND INSTALL AWOS EQUIPMENT PER AWOS SITE PREP MANUAL.

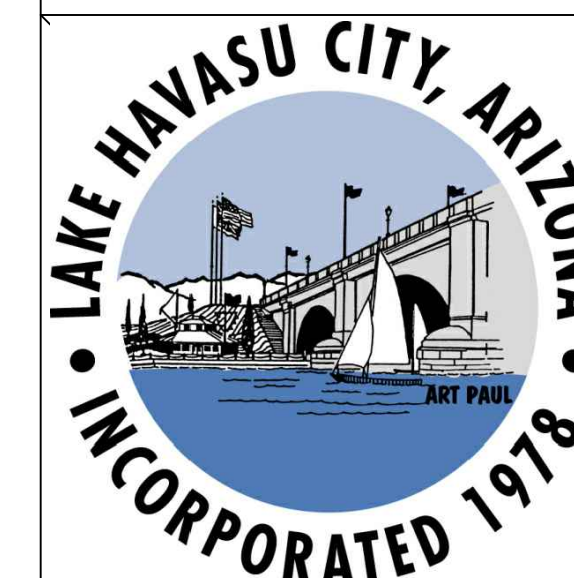
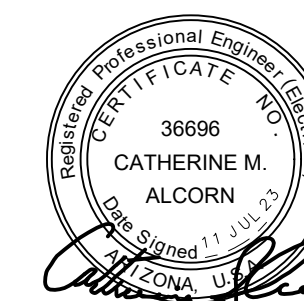


16719 East Palisades Blvd., Suite 202
Fountain Hills, AZ 85268
Phone: (480) 816-5541
Fax: (480) 816-5540
www.creng.com

KEYED MAP



C&S Engineers, Inc.
2575 East Camelback Rd
Suite 740
Phoenix, Arizona 85016
Phone: 602-997-7536
Fax: 602-997-7592
www.cscos.com



AWOS
REPLACEMENT PROJECT
LAKE HAVASU CITY MUNICIPAL AIRPORT
LAKE HAVASU CITY, ARIZONA

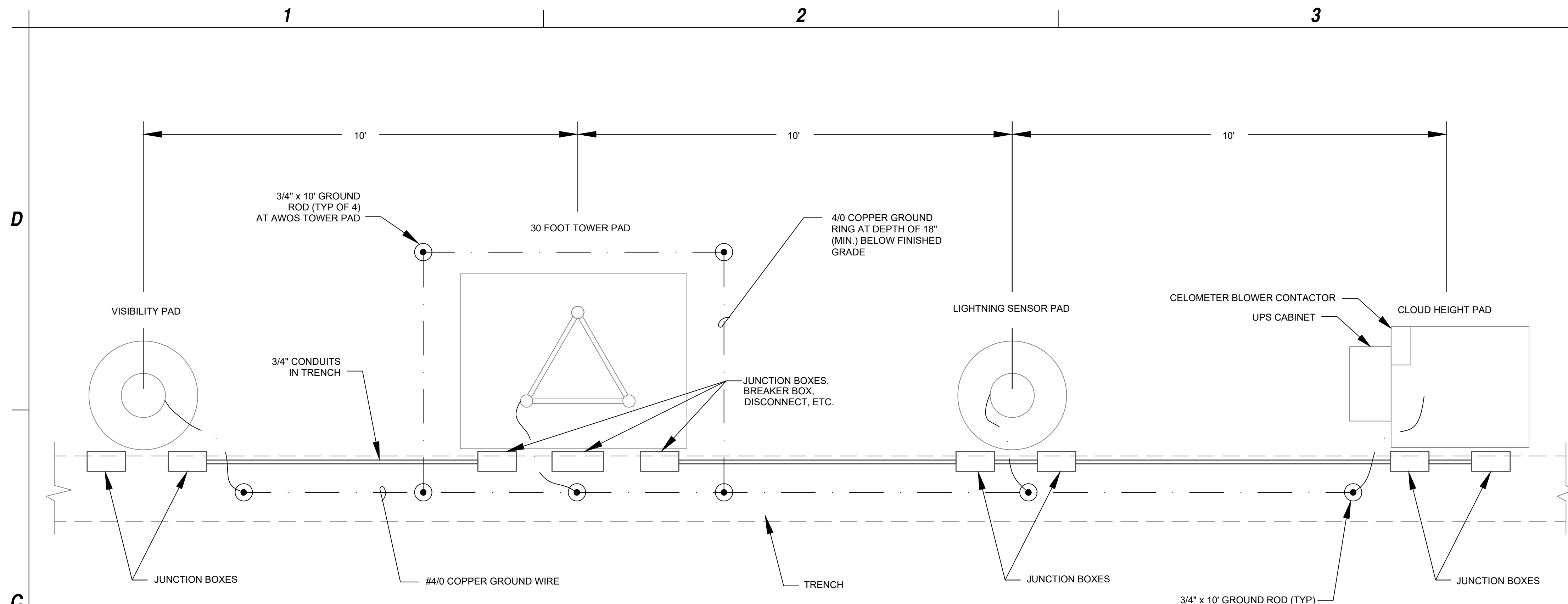
MARK	DATE	DESCRIPTION
REVISIONS		
PROJECT NO: K33004004		
DATE: JULY 2023		
DRAWN BY: JBW		
DESIGNED BY: JCA		
CHECKED BY: CA		

ELECTRICAL
INSTALLATION
PLAN

E1.2

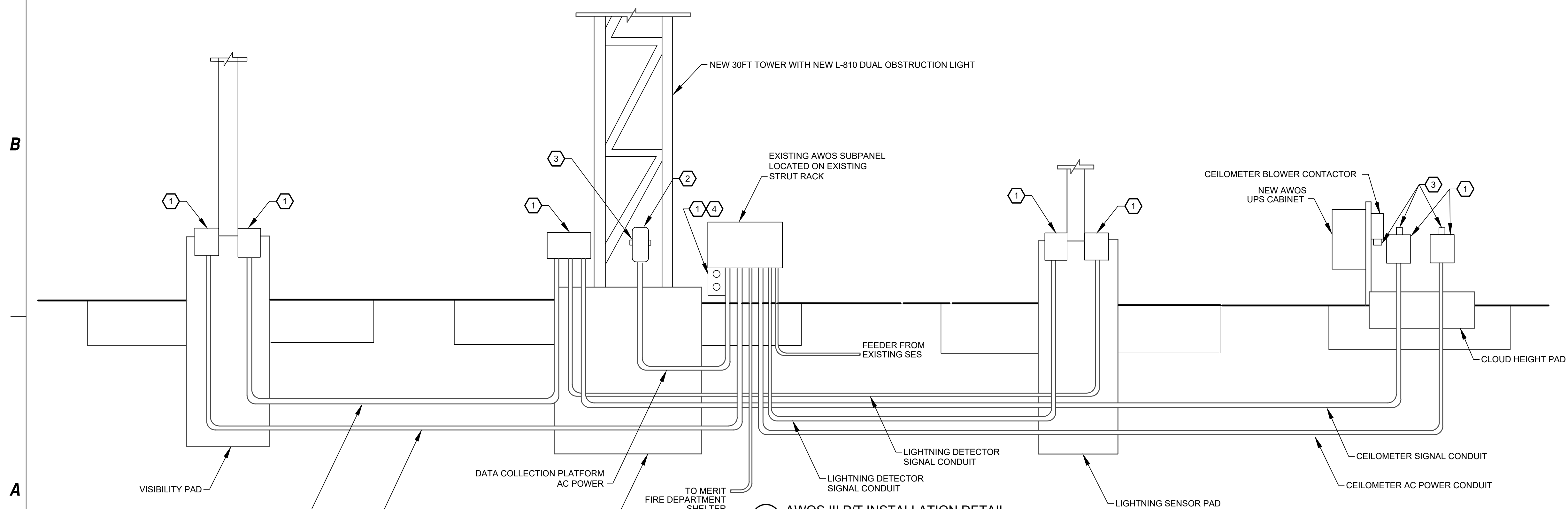
5 of 8

Jul 10, 2023 - 10:45am
G:\PROJECTS\22000\22040_Lake_Havasu_Airport_AWOS_Replacement\CAD\CAD_SHEETS\22040_E1.1_ELECTRICAL_INSTALLATION.dwg



(A) AWOS GROUNDING DIAGRAM
NTS

- NOTES**
1. CONTRACTOR TO USE EXISTING CONCRETE PADS AND FOUNDATIONS.
 2. THIS DETAIL IS DIAGRAMMATICAL ONLY TO REFLECT REQUIRED GROUNDING POINTS/CONNECTIONS.



(B) AWOS III P/T INSTALLATION DETAIL
NTS

- NOTES**
1. CONTRACTOR TO USE EXISTING CONCRETE PADS AND FOUNDATIONS.
 2. THIS DETAIL IS DIAGRAMMATICAL ONLY TO REFLECT CONDUIT CONNECTION POINTS. SEE INSTALLATION PLAN FOR EXISTING AWOS FOUNDATION LAYOUT.

GENERAL GROUNDING NOTES

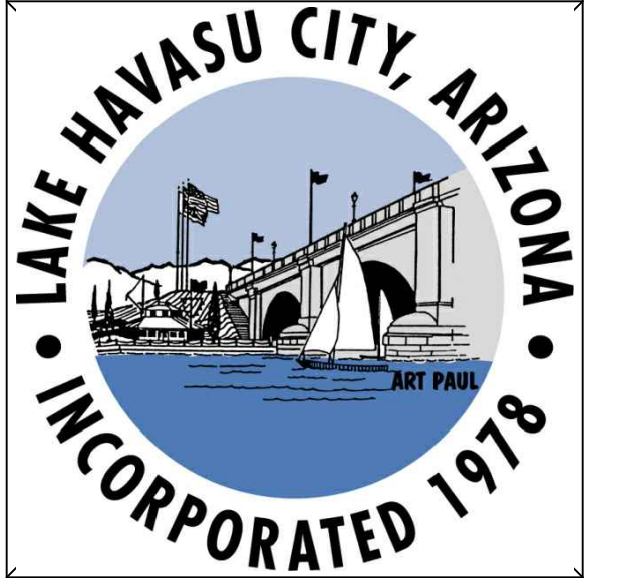
1. THIS DETAIL IS PROVIDED IN ACCORDANCE WITH NATIONAL ELECTRICAL CODE ARTICLE 250-50 PERTAINING TO THE "GROUNDING ELECTRODE SYSTEM".
2. SPLICING OF CONDUCTORS SHALL BE ACCOMPLISHED BY EXOTHERMIC WELD (CAD WELD) ONLY.
3. ALL CONNECTIONS TO GROUND RODS BELOW GRADE OR IN CONCRETE SHALL BE MADE BY EXOTHERMIC WELD (CAD WELD) ONLY. CONNECTIONS MADE ABOVE GROUND LEVEL CAN BE ACCOMPLISHED UTILIZING A U.L. LISTED MECHANICAL CLAMP SUITABLE FOR THE PURPOSE.
4. ANY VARIANCE FROM THIS DRAWING AND/OR SPECIFICATION MUST BE REQUESTED AND APPROVED IN WRITING PRIOR TO INSTALLATION.
5. ALL INSTALLATIONS SHALL COMPLY WITH THE LATEST ADOPTED EDITION OF ARTICLE 250 (ALL SUBPARAGRAPHS) OF THE NATIONAL ELECTRICAL CODE AND ALL STATE AND LOCAL CODE REQUIREMENTS.
6. THE GROUNDING SYSTEM SHALL PROVIDE NO GREATER THAN (5) FIVE OHMS RESISTANCE TO GROUND AT THE SERVICE CONNECTION. THE RESULTS SHALL BE VERIFIED BY AN INDEPENDENT TESTING AGENCY VIA GROUND TEST (FALL-OF-POTENTIAL) AND SUBMITTED IN ACCORDANCE WITH THE ELECTRICAL SPECIFICATIONS.

KEYED NOTES

- ① WEATHER TIGHT JUNCTION BOXES. APPLETON C75-M WITH COVER K75-CM AND RUBBER GASKET GK75-N OR EQUIVALENT. 7 REQUIRED
- ② WEATHER TIGHT JUNCTION BOXES. APPLETON FDCC-1-75 WITH WEATHER TIGHT COVER FSK-IB-C OR EQUIVALENT. 1 REQUIRED
- ③ STRAIN RELIEFS, TOMAS AND BETTS 2530 OR EQUIVALENT. 4 REQUIRED.
- ④ GFCI RECEPTACLE PLATE WITH GASKET AND COVER. HUBBEL WPFS26 OR EQUIVALENT AND GFCI RECEPTACLE, 15A, 125V HUBBEL GF-5262 OR EQUIVALENT.



C&S Engineers, Inc.
2575 East Camelback Rd
Suite 740
Phoenix, Arizona 85016
Phone: 602-997-7536
Fax: 602-997-7592
www.cscos.com

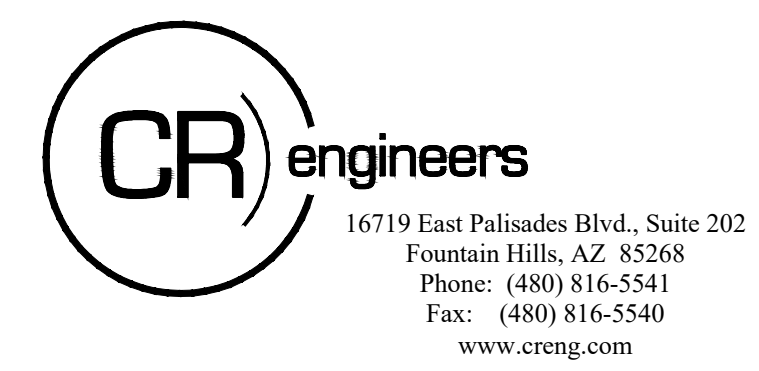


**AWOS
REPLACEMENT PROJECT**

**LAKE HAVASU CITY MUNICIPAL AIRPORT
LAKE HAVASU CITY, AIRIZONA**

MARK	DATE	DESCRIPTION
REVISIONS		
		PROJECT NO: K33004004
		DATE: JULY 2023
		DRAWN BY: JBW
		DESIGNED BY: JCA
		CHECKED BY: CA

**AWOS
INSTALLATION
AND GROUNDING
DETAILS**



E2.1

6 of 8

Jul 10, 2023 - 1:03pm
 C:\PROJECTS\22000\22040_Lake_Havasu_Airport_AWOS_Replacement\CAD\SHETS\22040_E2.1_AWOS_DETAILS.dwg

1

2

3

4

D

C

B

A

D

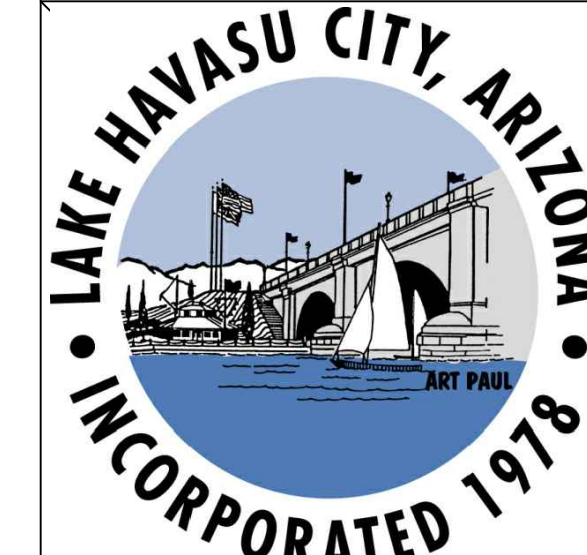
C

B

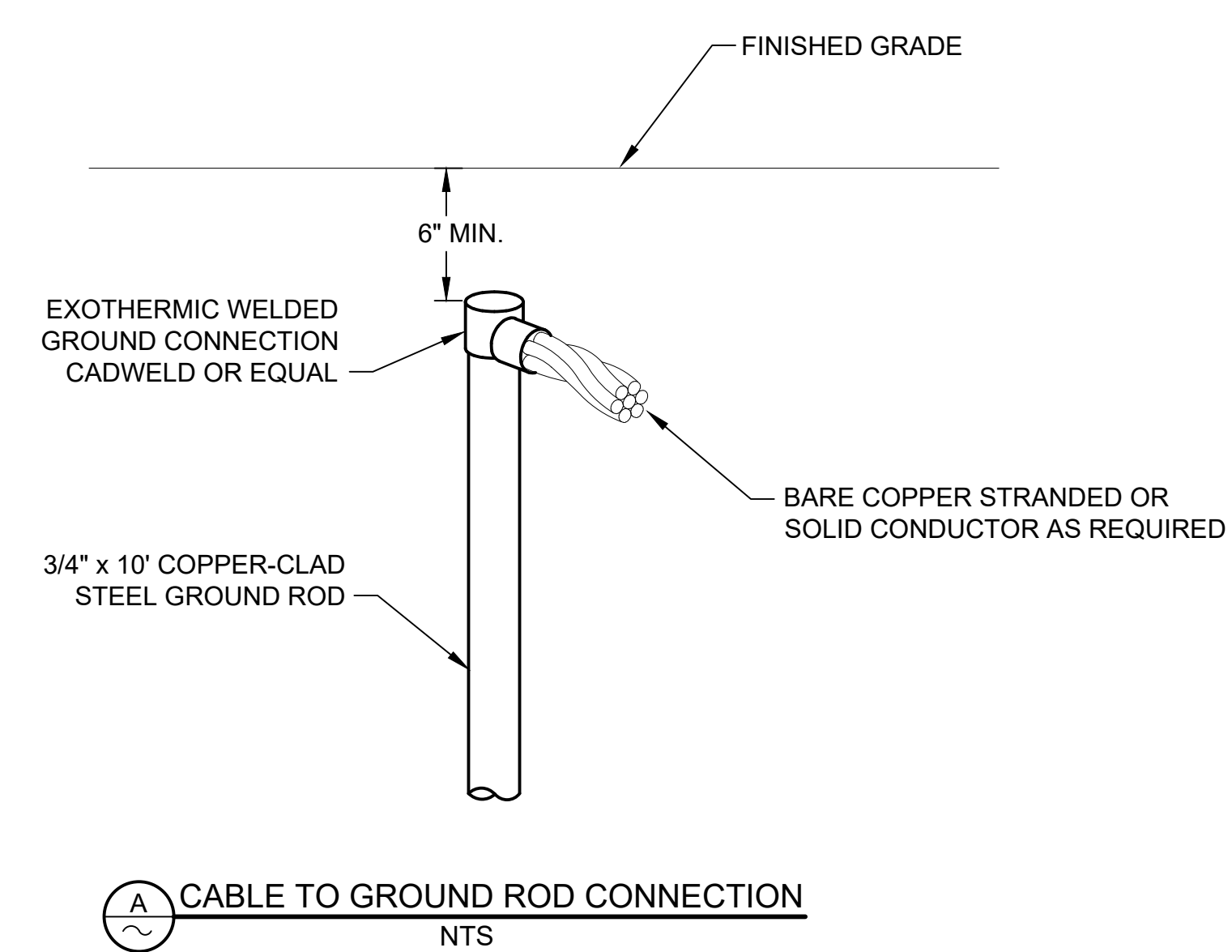
A



C&S Engineers, Inc.
 2575 East Camelback Rd
 Suite 740
 Phoenix, Arizona 85016
 Phone: 602-997-7536
 Fax: 602-997-7592
 www.cscos.com



**AWOS
 REPLACEMENT PROJECT
 LAKE HAVASU CITY MUNICIPAL AIRPORT
 LAKE HAVASU CITY, AIRIZONA**



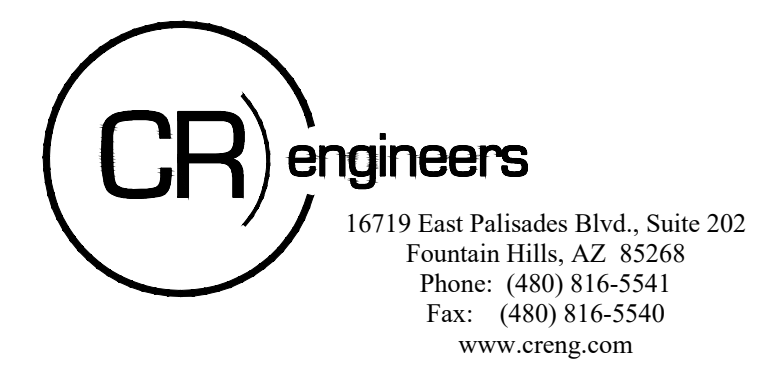
A CABLE TO GROUND ROD CONNECTION
 NTS

MARK	DATE	DESCRIPTION
		REVISIONS
		PROJECT NO: K33004004
		DATE: JULY 2023
		DRAWN BY: JBW
		DESIGNED BY: JCA
		CHECKED BY: CA

**GROUNDING
 DETAIL**

E3.1

7 of 8



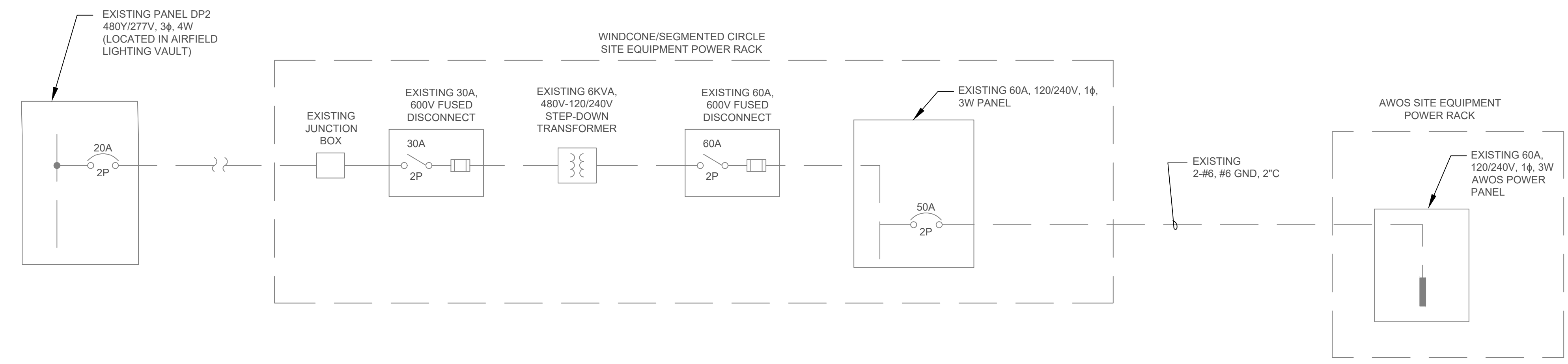
Jul 10, 2023 - 1:00pm
 O:\PROJECTS\22000\22040 Lake Havasu Airport AWOS Replacement\CAD\CAD SHEETS\22040 E3.1 GROUNDING DETAILS.dwg

PANEL: WINDCONE		VOLTAGE: 120/240		MAIN CB: MLO		BUS AMPS: 60A	
CB TYPE: BOLT-ON		MOUNTING: SURFACE		BRACING: 10KAIC		BKR AIC: 10K1AC	
CIRCUIT DESCRIPTION	BKR	CIRCUIT	LINE 1	LINE 2	CIRCUIT	BKR	CIRCUIT DESCRIPTION
AWOS	50	1			2		SPACE
	/	3			4		SPACE
	2	5			6		SPACE
AWOS	50	7			8		SPACE
	/	9			10		SPACE
	2	11			12		SPACE
WINDSOCK	15/1						
SPACE							
CONNECTED KVA PER PHASE		0.0	0.0	NOTES:			
CONNECTED AMPS PER PHASE		0.0	0.0				
25% OF CONTINUOUS & LIGHTING LOAD (KVA)		0.0	0.0				
LARGEST MOTOR (25%)		0.0	0.0				
CODE KVA PER PHASE		0.0	0.0				
CODE AMPS PER PHASE AT 120V		0.0	0.0				

A EXISTING WINDCONE PANEL SCHEDULE
(FOR REFERENCE ONLY)

PANEL: AWOS		VOLTAGE: 120/240		MAIN CB: MLO		BUS AMPS: 60A	
CB TYPE: BOLT-ON		MOUNTING: SURFACE		BRACING: 10KAIC		BKR AIC: 10K1AC	
CIRCUIT DESCRIPTION	BKR	CIRCUIT	LINE 1	LINE 2	CIRCUIT	BKR	CIRCUIT DESCRIPTION
OBSTRUCTION LIGHT (TOWER)	20/1	1	400		2	20/1	LIGHTNING SENSOR
		3	200		4	20/1	GFCI DUPLEX OUTLET (TOWER)
RAIN GAUGE (TOWER)	20/1	5	200		6	20/1	VISIBILITY SENSOR
PRESENT WEATHER SENSOR (TOWER)	20/1	7	400		8	20/1	DATA COLLECTION PLATFORM
CLOUD HEIGHT SENSOR	20/1	9	1000		10	20/1	DAY/NIGHT DETECTOR (TOWER)
OTHER SENSORS, AS APPLICABLE	20/1	11	500		12		SPACE
SPACE							SPACE
CONNECTED KVA PER PHASE		2.2	2.2	NOTES:			
CONNECTED AMPS PER PHASE		18.3	18.3	* DENOTES NEW CIRCUIT BREAKER. MATCH EXISTING IN BRACING AND TYPE.			
25% OF CONTINUOUS & LIGHTING LOAD (KVA)		0.1	0.0				
LARGEST MOTOR (25%)		0.0	0.0				
CODE KVA PER PHASE		2.3	2.2				
CODE AMPS PER PHASE AT 120V		19.2	18.3				

B EXISTING AWOS PANEL SCHEDULE (WITH NEW AWOS LOADS)



C SINGLE LINE DIAGRAM - AWOS FEED
(FOR INFORMATION ONLY)

GENERAL NOTES - ONE-LINE

1. THE ELECTRICAL CONTRACTOR SHALL FIELD VERIFY ALL EXISTING CONDITIONS TO FULLY FAMILIARIZE HIMSELF WITH ALL EXISTING CONDITIONS PRIOR TO BID. NO ADDITIONAL CONSIDERATIONS WILL BE ALLOWED AFTER THE BID.
2. THE ELECTRICAL CONTRACTOR IS RESPONSIBLE FOR INSTALLING ALL INDICATED EQUIPMENT TO CODE COMPLIANT CLEARANCES. PROVIDE SUBMITTALS AS INDICATED IN SPECIFICATIONS TO PROPERLY COORDINATE PHYSICAL LOCATIONS OF NEW AND/OR EXISTING EQUIPMENT.
3. REFER TO ELECTRICAL SPECIFICATIONS FOR ADDITIONAL REQUIREMENTS AND COMPLETE CONTRACTUAL OBLIGATIONS.
4. ALL DASHED LINES ARE INDICATING EXISTING EQUIPMENT.
5. UPON SUBSTANTIAL COMPLETION, THE ELECTRICAL CONTRACTOR SHALL NOTIFY THE ENGINEER AND SHALL ALLOW, AT THE ENGINEERS DISCRETION, FOR THE INSPECTION OF NEW WORK PRIOR TO ENERGIZING.



C&S Engineers, Inc.
2575 East Camelback Rd
Suite 740
Phoenix, Arizona 85016
Phone: 602-997-7536
Fax: 602-997-7592
www.cscos.com



**AWOS
REPLACEMENT PROJECT**
LAKE HAVASU CITY MUNICIPAL AIRPORT
LAKE HAVASU CITY, ARIZONA

MARK	DATE	DESCRIPTION
REVISIONS		
PROJECT NO: K33004004		
DATE: JULY 2023		
DRAWN BY: JBW		
DESIGNED BY: JCA		
CHECKED BY: CA		

**PANEL
SCHEDULES
AND SINGLE
LINE DIAGRAM**

E4.1

8 of 8

Jul 10, 2023 - 10:53am
O:\PROJECTS\22000\22040_Lake_Havasu_Airport_AWOS_Replacement\CAD\CAD_SHEETS\22040_E4.1_SLD.dwg