

# LAKE HAVASU CITY, ARIZONA

## ISLAND PATH RE-PAVE

### 3.5 MILE LOOP

## PROJECT # B24-PW-500412

ARIZONA BLUE STAKE  
CALL THE SPECIAL RATE  
BEFORE YOU DIG  
Dial 811 or  
602-263-1100  
1-800-STAKE-IT  
(OUTSIDE MARICOPA COUNTY)

NO.	REVISIONS / SUBMISSIONS	DATE
#		
#		
#		
#		



ISLAND PATH RE-PAVE  
#ITB B24-PW-500412

Designed by: SMC  
Drawn by: SC  
Checked by: MW  
Date: 9/26/23  
Dwg scale:

Sheet Number:  
**C-0**  
Sheet 0 of 4



### DRAWING INDEX

SHEET NO	DWG NO	DESCRIPTION
<b>CIVIL</b>		
1	C-0	COVER SHEET
2	C-1	PAVEMENT REHABILITATION PLAN
3	C-2	PAVEMENT REHABILITATION PLAN (CONT)
4	C-3	LONDON BRIDGE ROAD STA. 12+00 TO 24+00
5	C-4	TYPICAL SECTIONS

### CITY COUNCIL

CAL SHEEHY	MAYOR
DAVID LANE	VICE MAYOR
JIM DOLAN	COUNCIL MEMBER
NANCY CAMPBELL	COUNCIL MEMBER
MICHELE LIN	COUNCIL MEMBER
CAMERON MOSES	COUNCIL MEMBER
JENI COKE	COUNCIL MEMBER

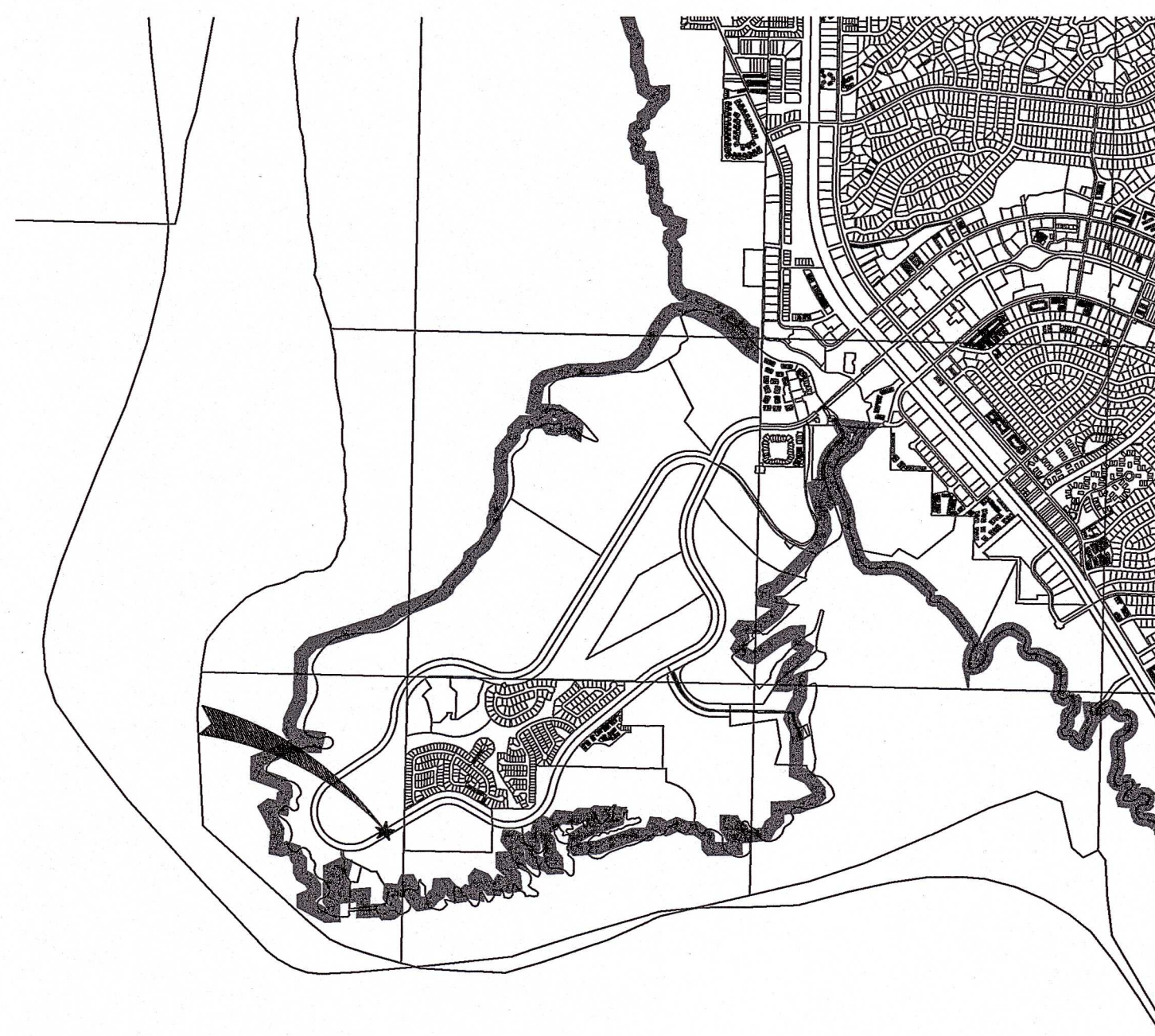
### UTILITY CONTACTS

LAKE HAVASU CITY (WASTEWATER)	(928) 855-3999
LAKE HAVASU CITY (WATER)	(928) 855-2618
SUDDEN LINK	(928) 855-9855
FRONTIER COMMUNICATION	(928) 453-0541
UNISOURCE ENERGY SERVICES (GAS)	(928) 505-7025
UNISOURCE ENERGY SERVICES (ELECTRIC)	(928) 505-7031

CITY MANAGER  
JESS KNUDSEN

CITY PUBLIC WORKS DIRECTOR/CITY ENGINEER  
J. GREGORY FROSLIE, P.E.

CIVIL ENGINEER  
SHAWN M. CLARKE, P.E.



VICINITY MAP  
NO SCALE



LOCATION MAP  
NO SCALE

**PAVEMENT NOTES:**

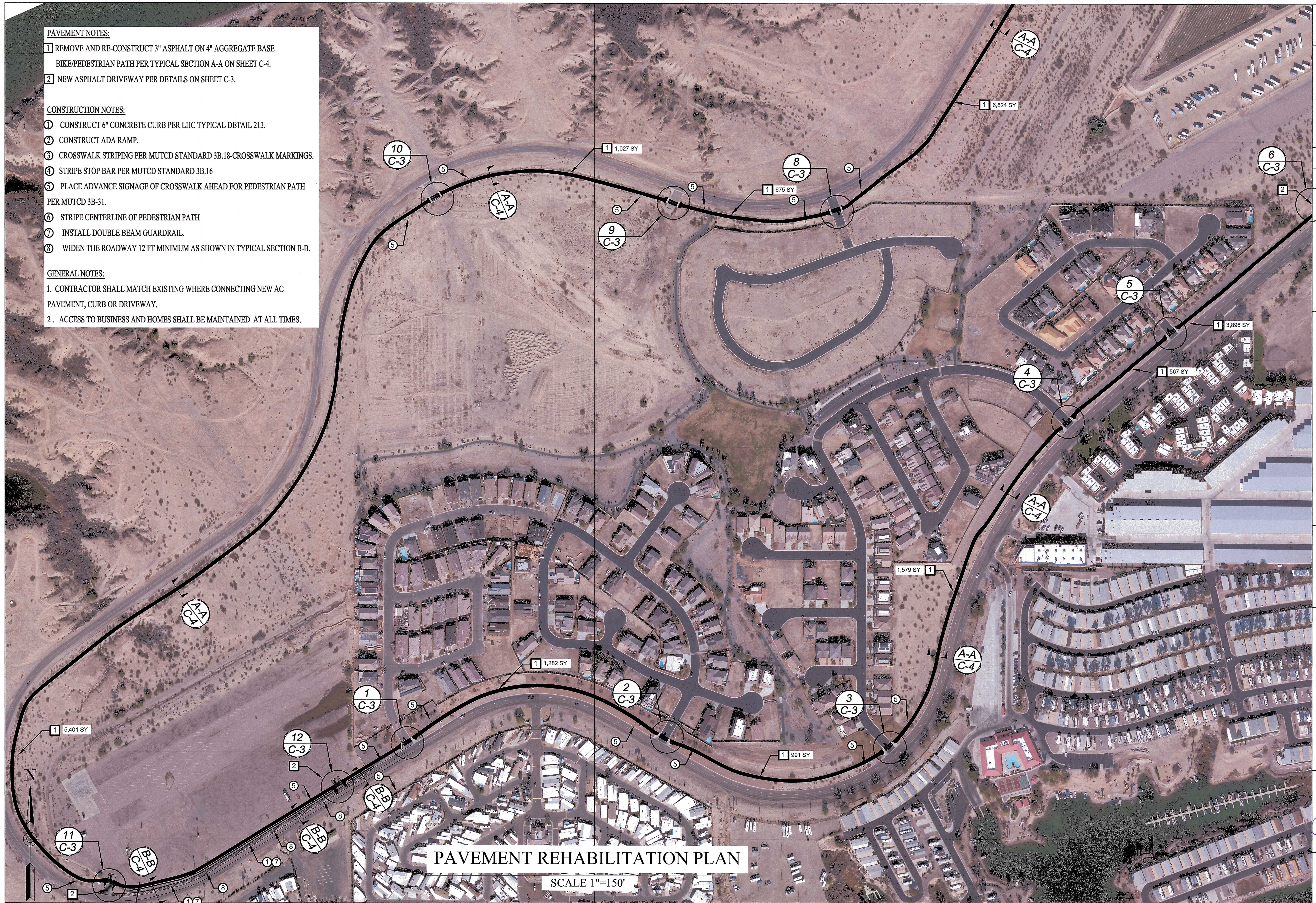
- 1 REMOVE AND RE-CONSTRUCT 3" ASPHALT ON 4" AGGREGATE BASE BIKE/PEDESTRIAN PATH PER TYPICAL SECTION A-A ON SHEET C-4.
- 2 NEW ASPHALT DRIVEWAY PER DETAILS ON SHEET C-3.

**CONSTRUCTION NOTES:**

- 1 CONSTRUCT 6" CONCRETE CURB PER LHC TYPICAL DETAIL 213.
- 2 CONSTRUCT ADA RAMP.
- 3 CROSSWALK STRIPING PER MUTCD STANDARD 3B.18-CROSSWALK MARKINGS.
- 4 STRIPE STOP BAR PER MUTCD STANDARD 3B.16
- 5 PLACE ADVANCE SIGNAGE OF CROSSWALK AHEAD FOR PEDESTRIAN PATH PER MUTCD 3B-31.
- 6 STRIPE CENTERLINE OF PEDESTRIAN PATH
- 7 INSTALL DOUBLE BEAM GUARDRAIL.
- 8 WIDEN THE ROADWAY 12 FT MINIMUM AS SHOWN IN TYPICAL SECTION B-B.

**GENERAL NOTES:**

- 1. CONTRACTOR SHALL MATCH EXISTING WHERE CONNECTING NEW AC PAVEMENT, CURB OR DRIVEWAY.
- 2. ACCESS TO BUSINESS AND HOMES SHALL BE MAINTAINED AT ALL TIMES.



**PAVEMENT REHABILITATION PLAN**

SCALE 1"=150'

NO.	#	#	#	#	DATE



ISLAND PATH RE-PAVE  
#ITB B24-PW-500412

Designed by: SMC  
Drawn by: SC  
Checked by: LW  
Date: 8/26/23  
Dwg. scale:



**PAVEMENT NOTES:**

- 1 REMOVE AND RE-CONSTRUCT 3" ASPHALT ON 4" AGGREGATE BASE BIKE/PEDESTRIAN PATH PER TYPICAL SECTION A-A ON SHEET C-4.
- 2 NEW ASPHALT DRIVEWAY PER DETAILS ON SHEET C-3.

**CONSTRUCTION NOTES:**

- 1 CONSTRUCT 6" CONCRETE CURB PER LHC TYPICAL DETAIL 213.
- 2 CONSTRUCT ADA RAMP.
- 3 CROSSWALK STRIPING PER MUTCD STANDARD 3B.18-CROSSWALK MARKINGS.
- 4 STRIPE STOP BAR PER MUTCD STANDARD 3B.16
- 5 PLACE ADVANCE SIGNAGE OF CROSSWALK AHEAD FOR PEDESTRIAN PATH PER MUTCD 3B-31.
- 6 STRIPE CENTERLINE OF PEDESTRIAN PATH
- 7 INSTALL DOUBLE BEAM GUARDRAIL.
- 8 WIDEN THE ROADWAY 12 FT MINIMUM AS SHOWN IN TYPICAL SECTION B-B.

**GENERAL NOTES:**

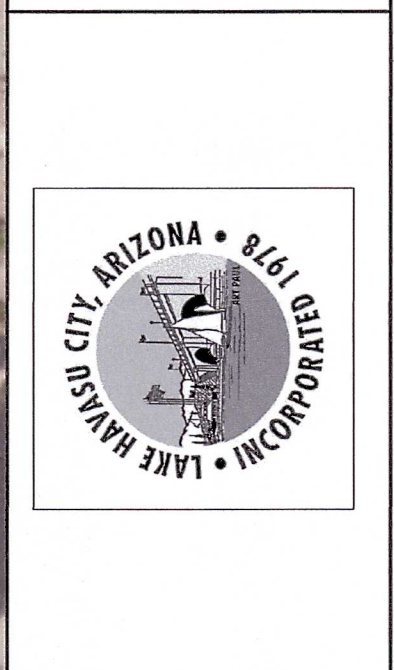
- 1. CONTRACTOR SHALL MATCH EXISTING WHERE CONNECTING NEW AC PAVEMENT, CURB OR DRIVEWAY.
- 2. ACCESS TO BUSINESS AND HOMES SHALL BE MAINTAINED AT ALL TIMES.



**PAVEMENT REHABILITATION PLAN**

SCALE 1"=150'

NO.	#	#	#	#

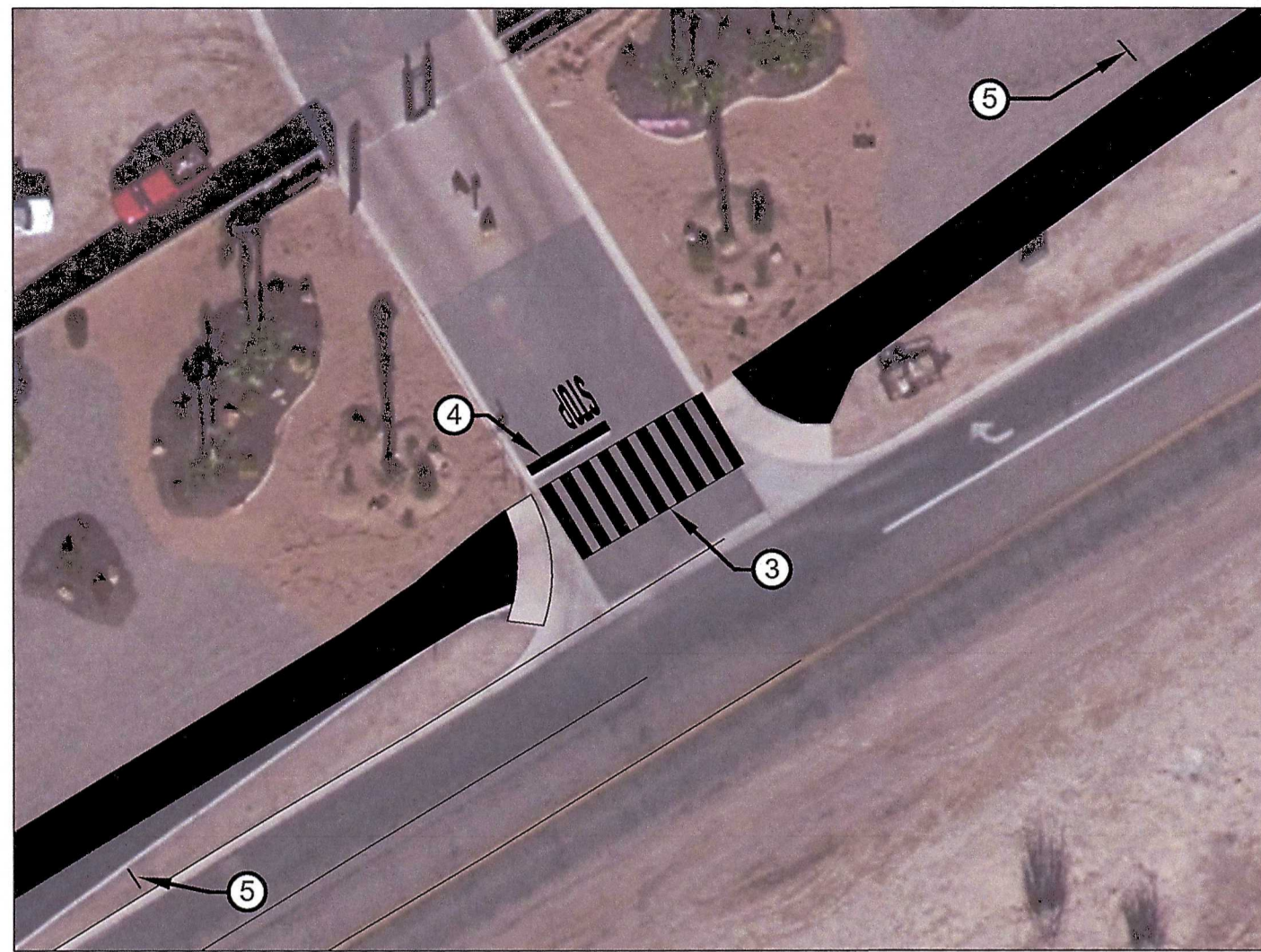


ISLAND PATH RE-PAVE  
#ITB B24-PW-500412

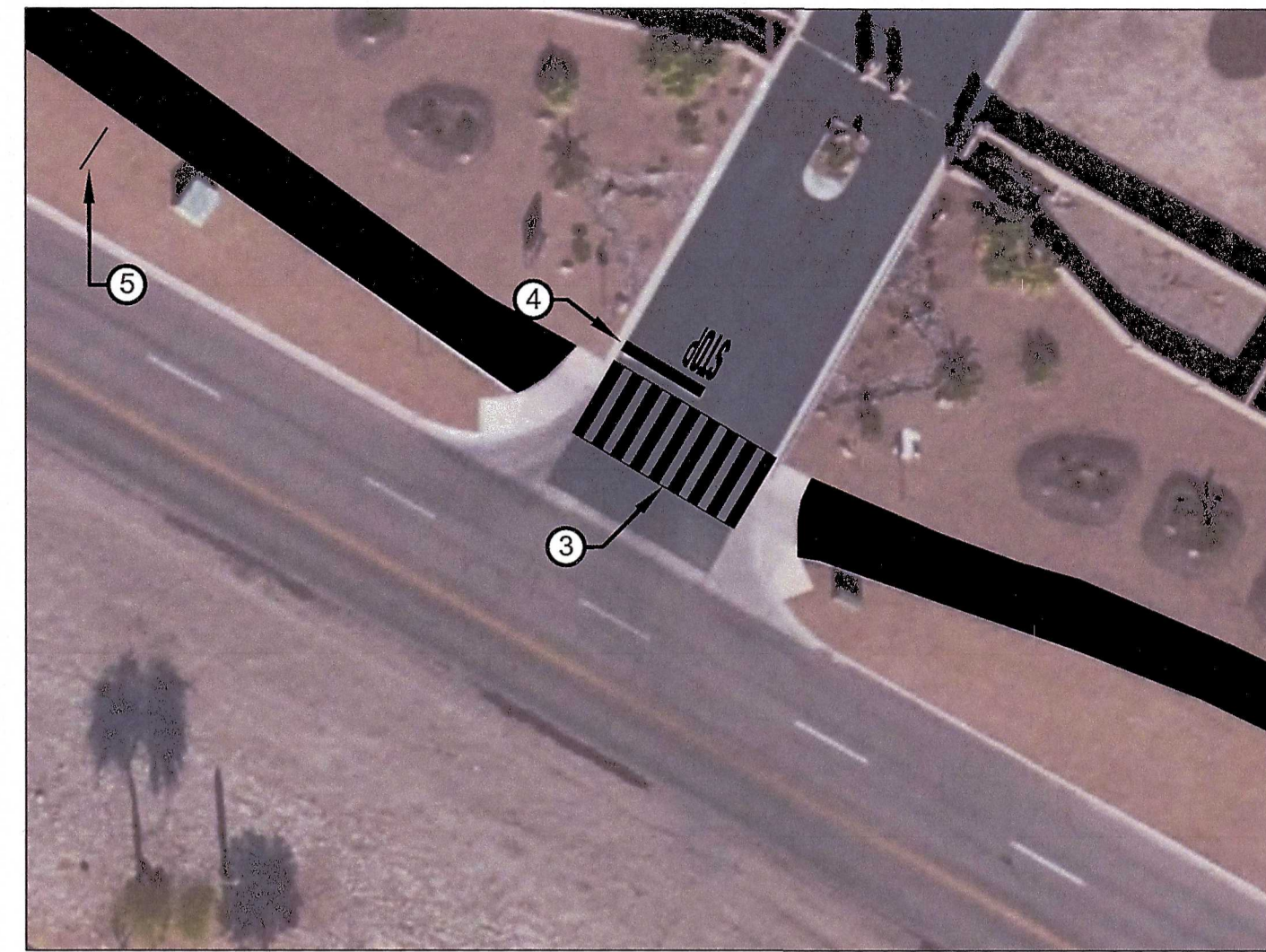
Designed by: SMC  
Drawn by: SC  
Checked by: MW  
Date: 8/26/23  
Dwg scale: 1" = 20'



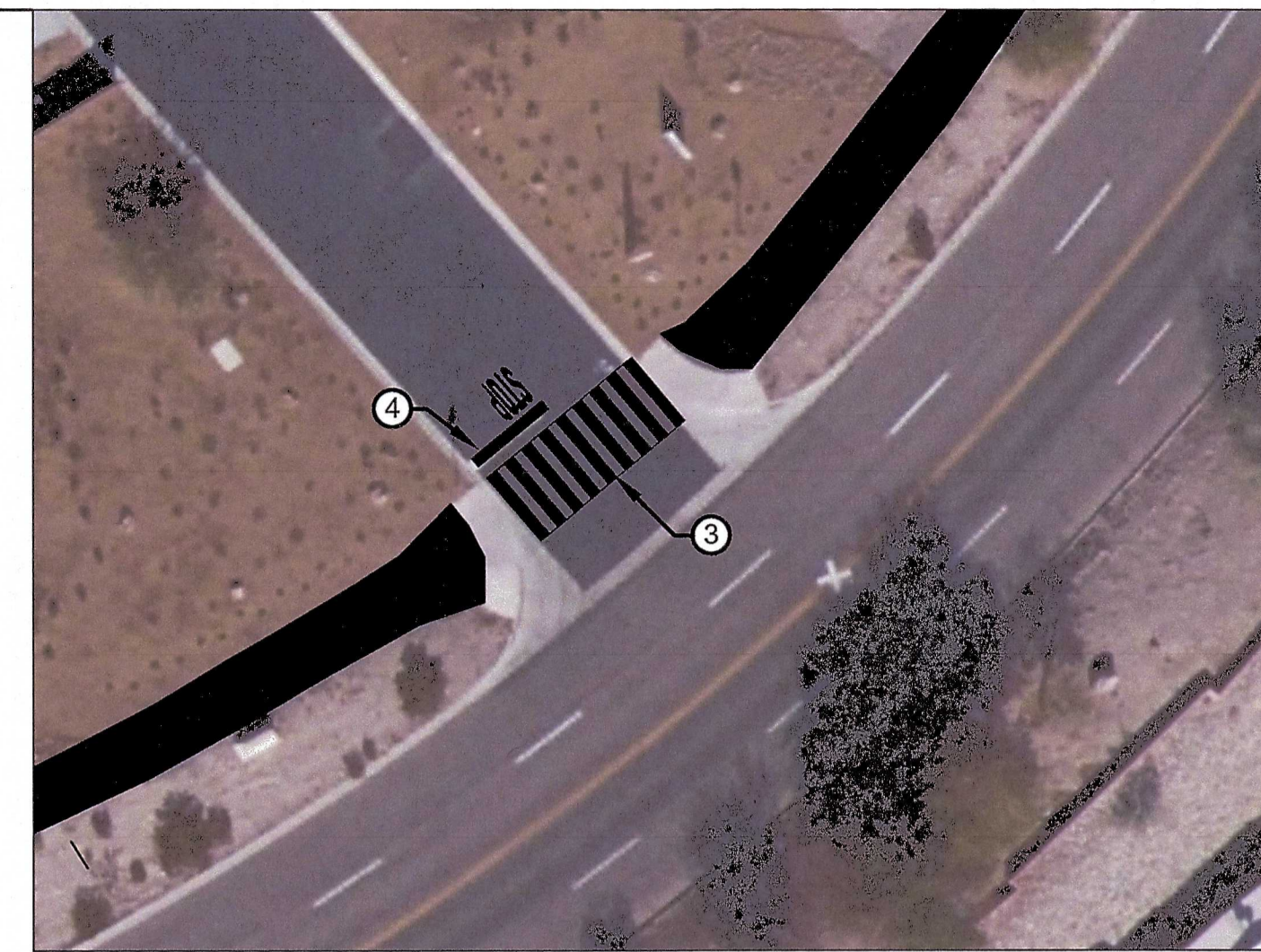
C-2



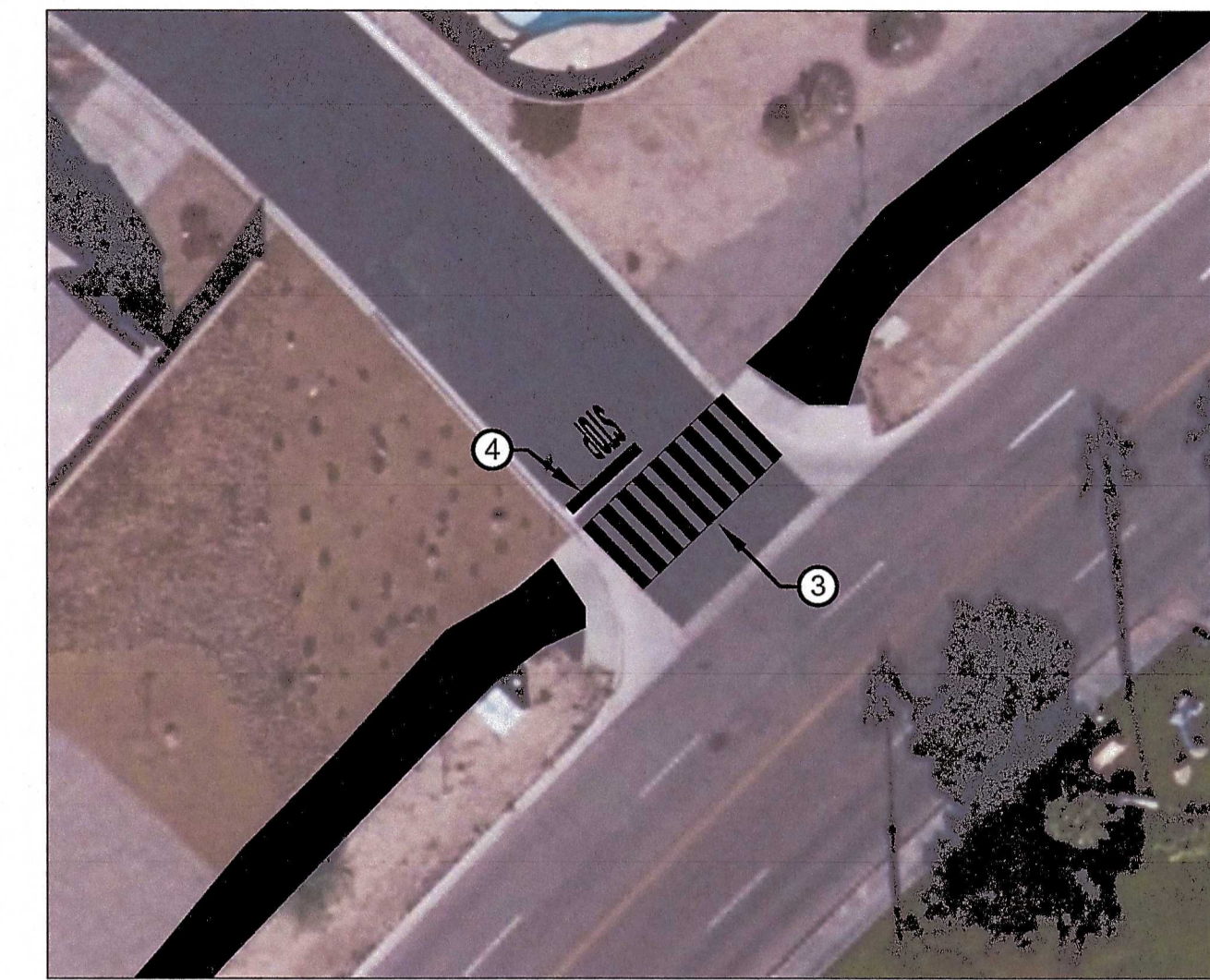
DRIVEWAY ①



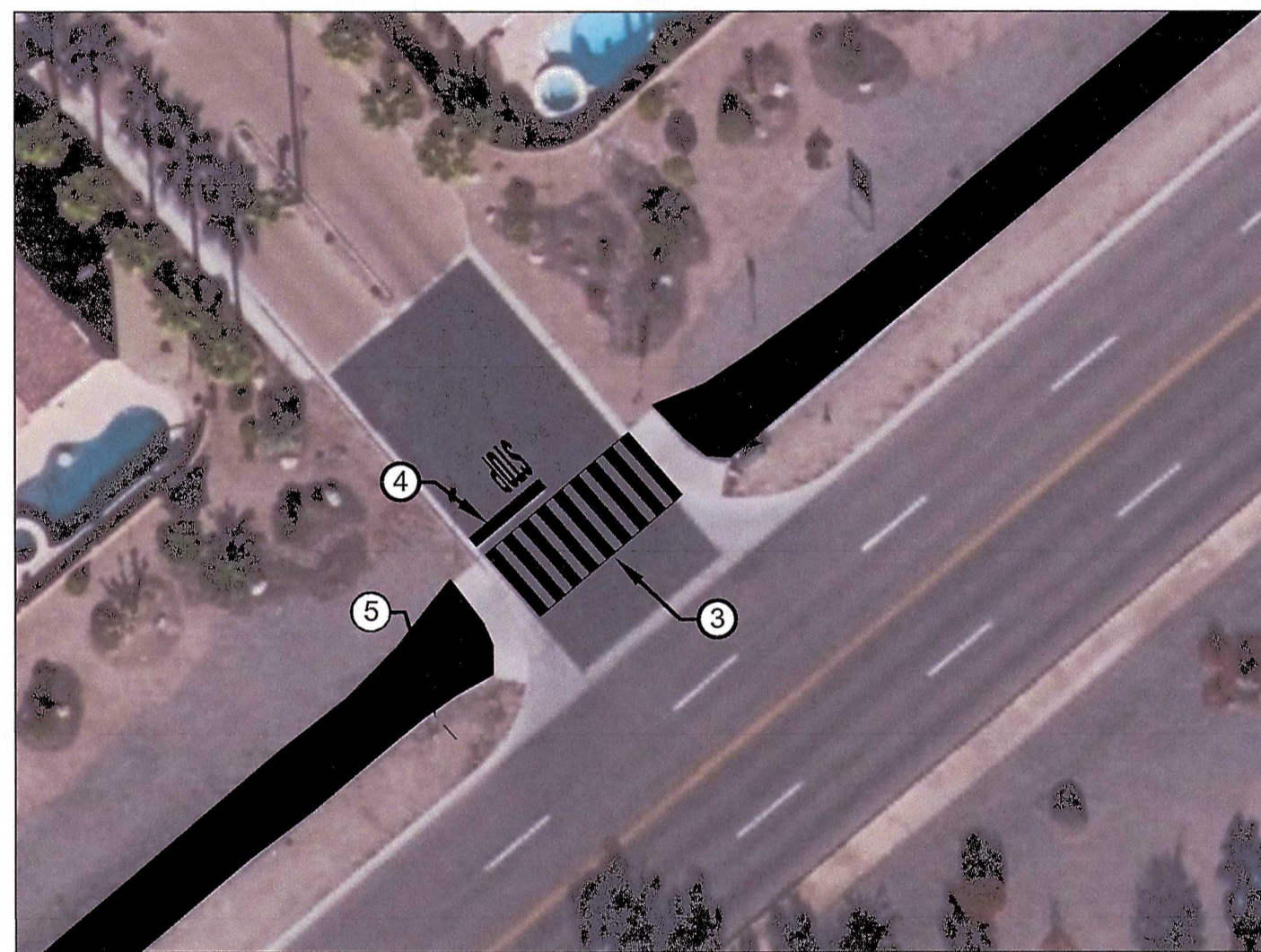
DRIVEWAY ②



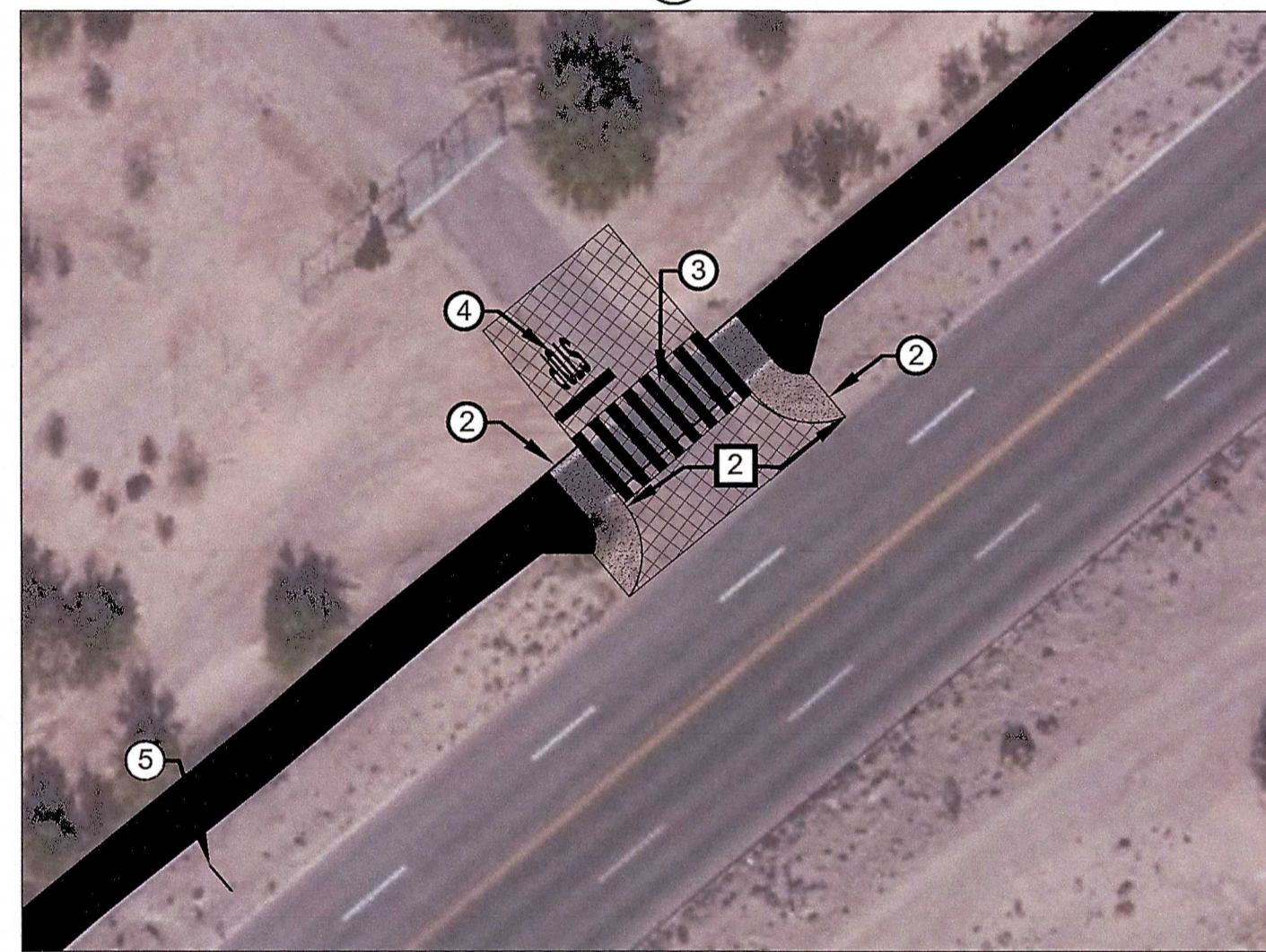
DRIVEWAY ③



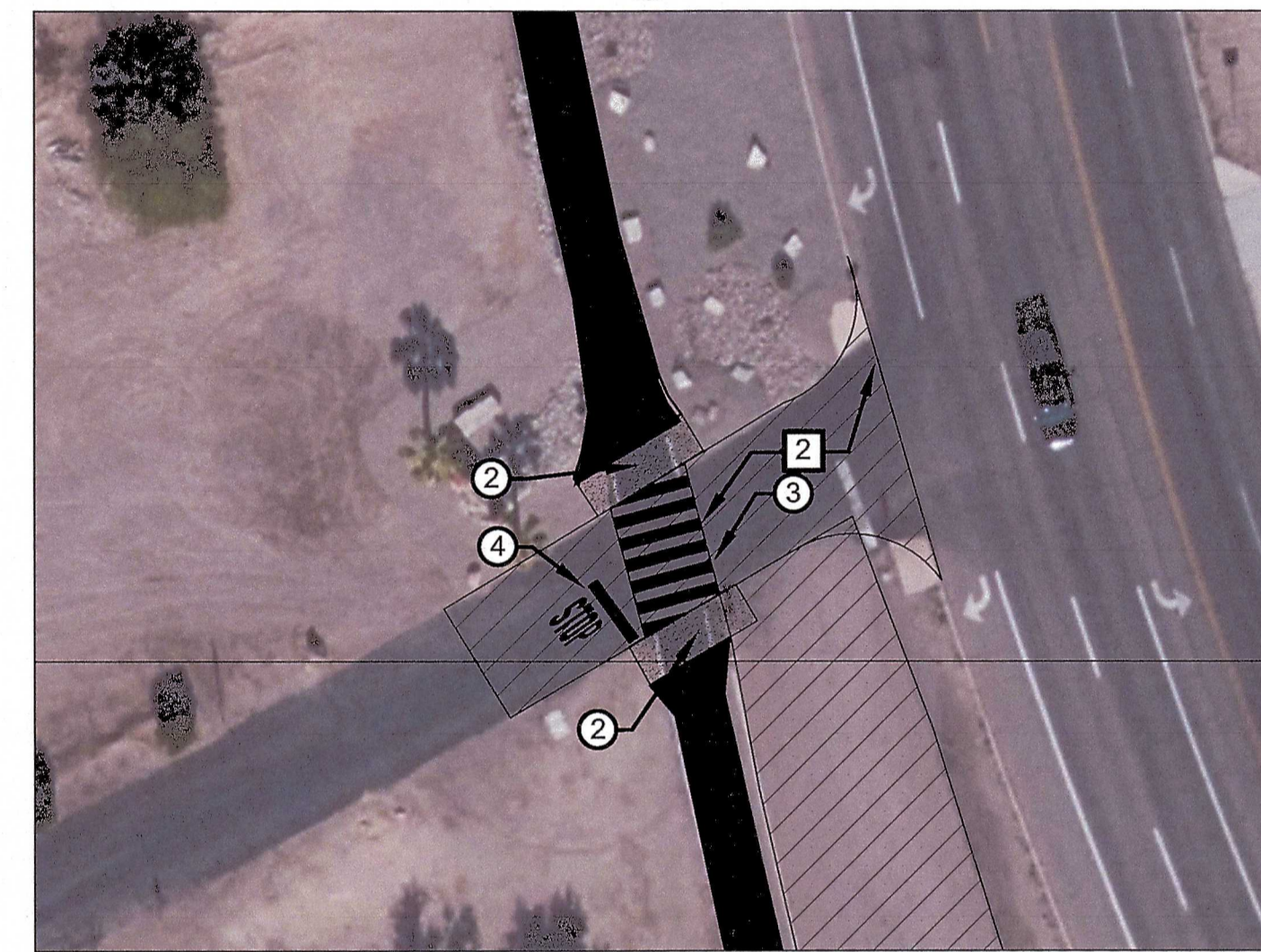
DRIVEWAY ④



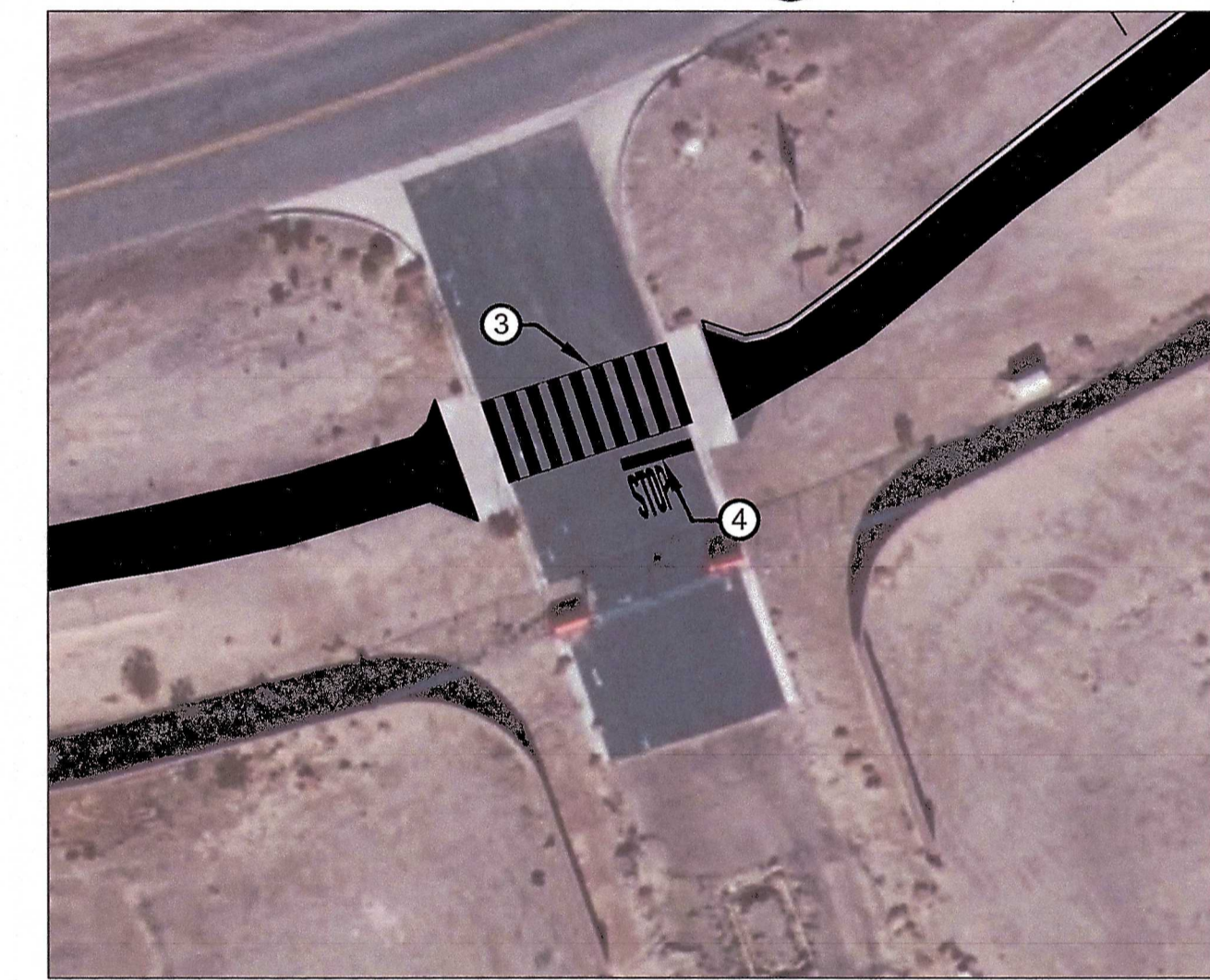
DRIVEWAY ⑤



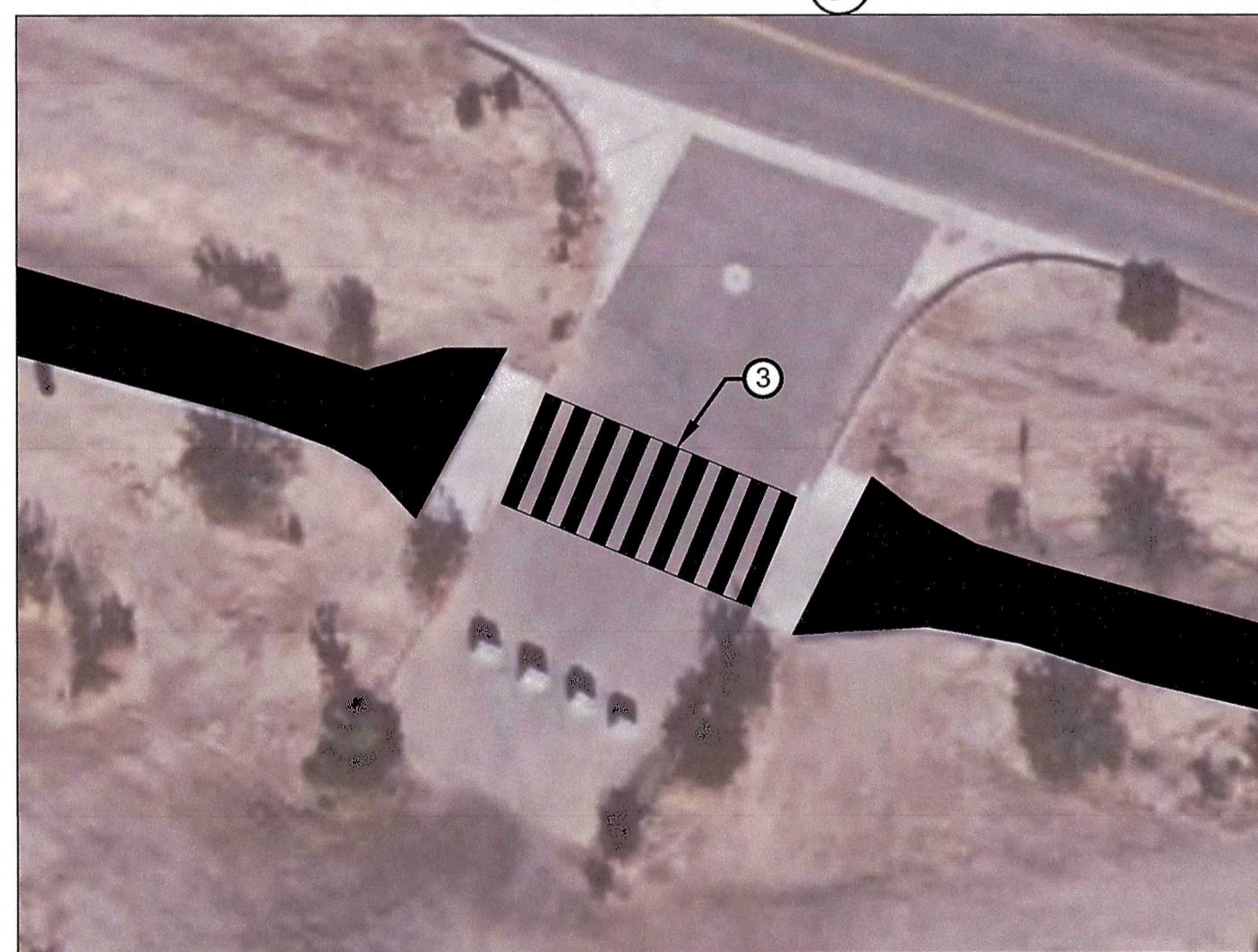
DRIVEWAY ⑥



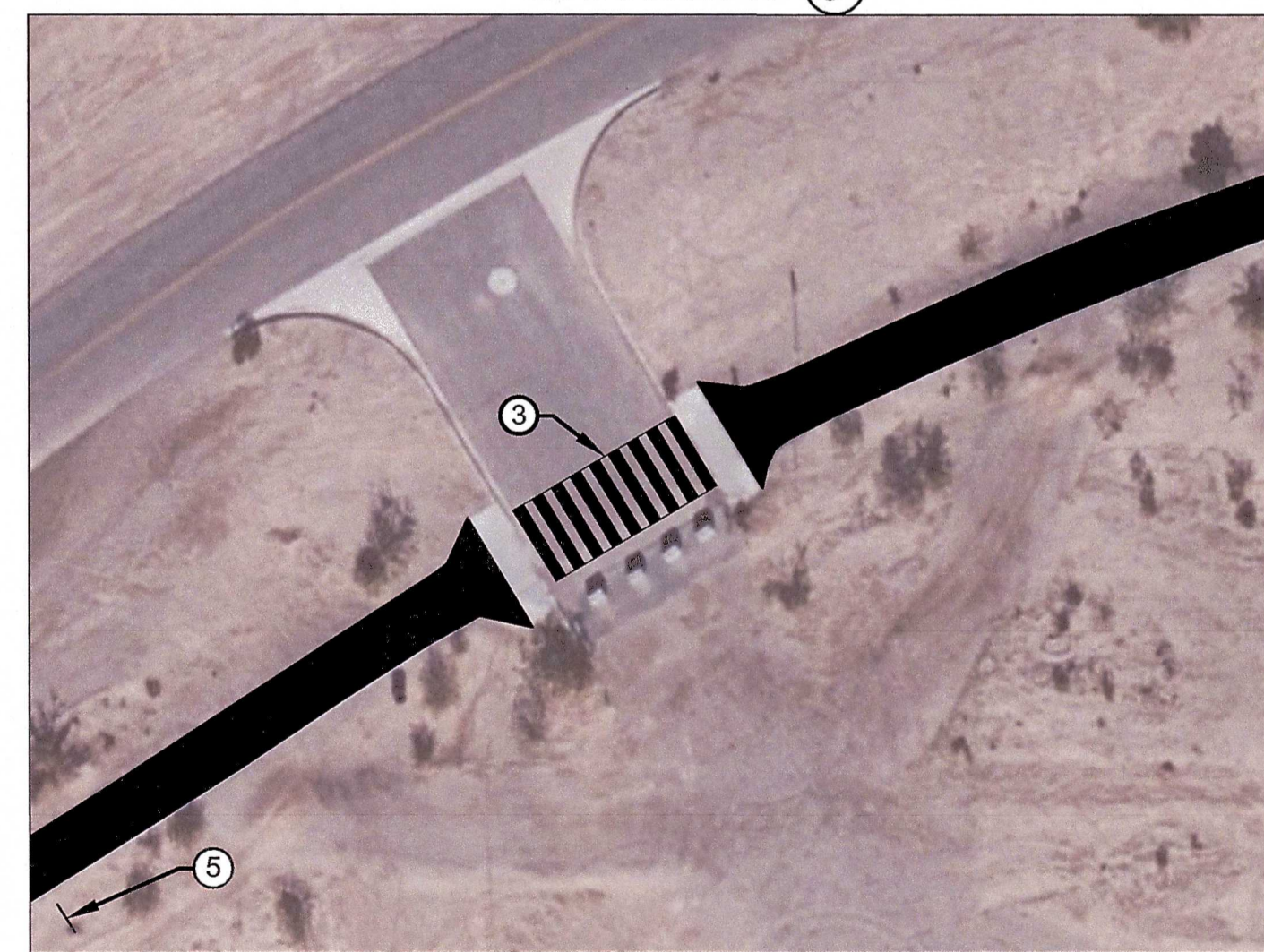
DRIVEWAY ⑦



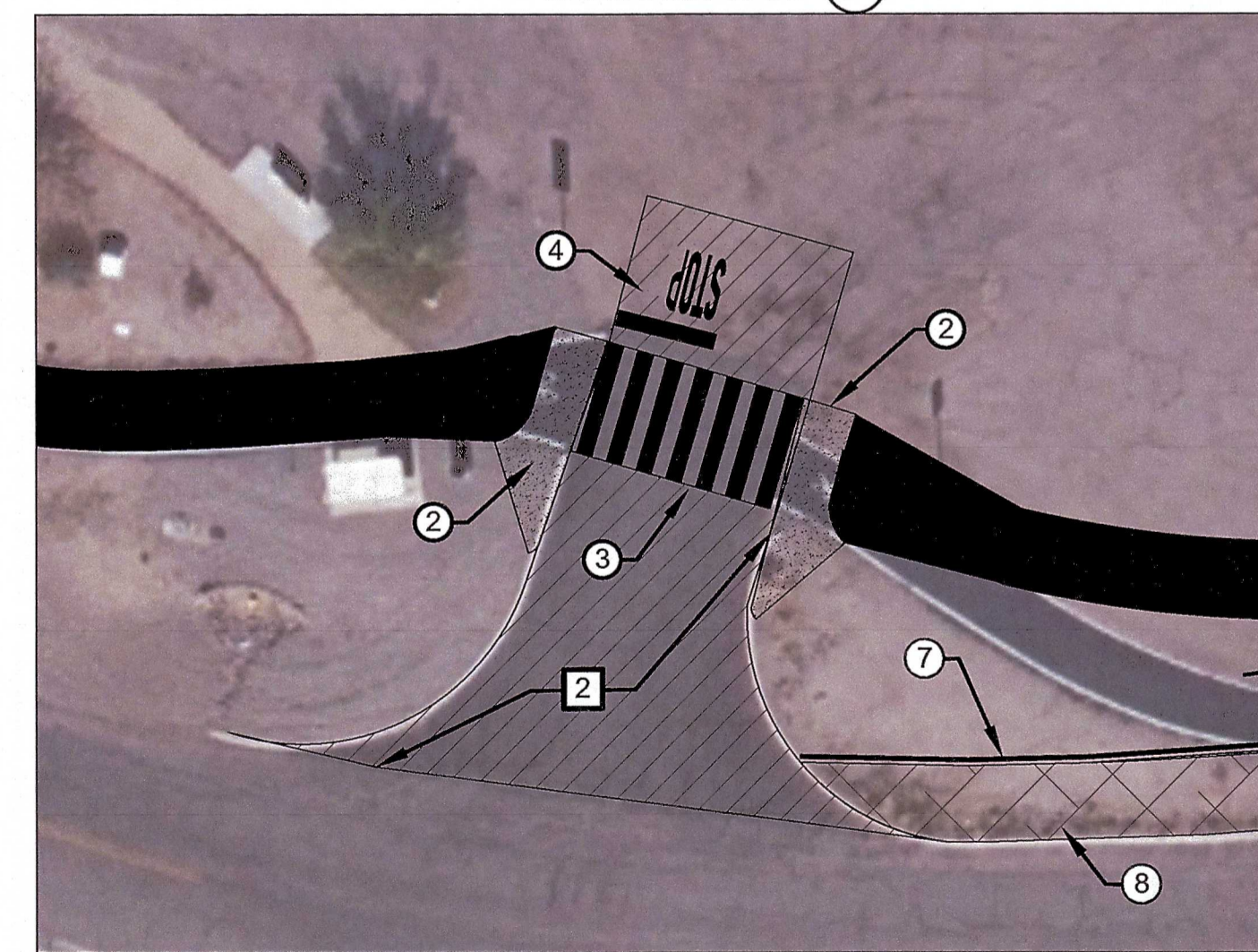
DRIVEWAY ⑧



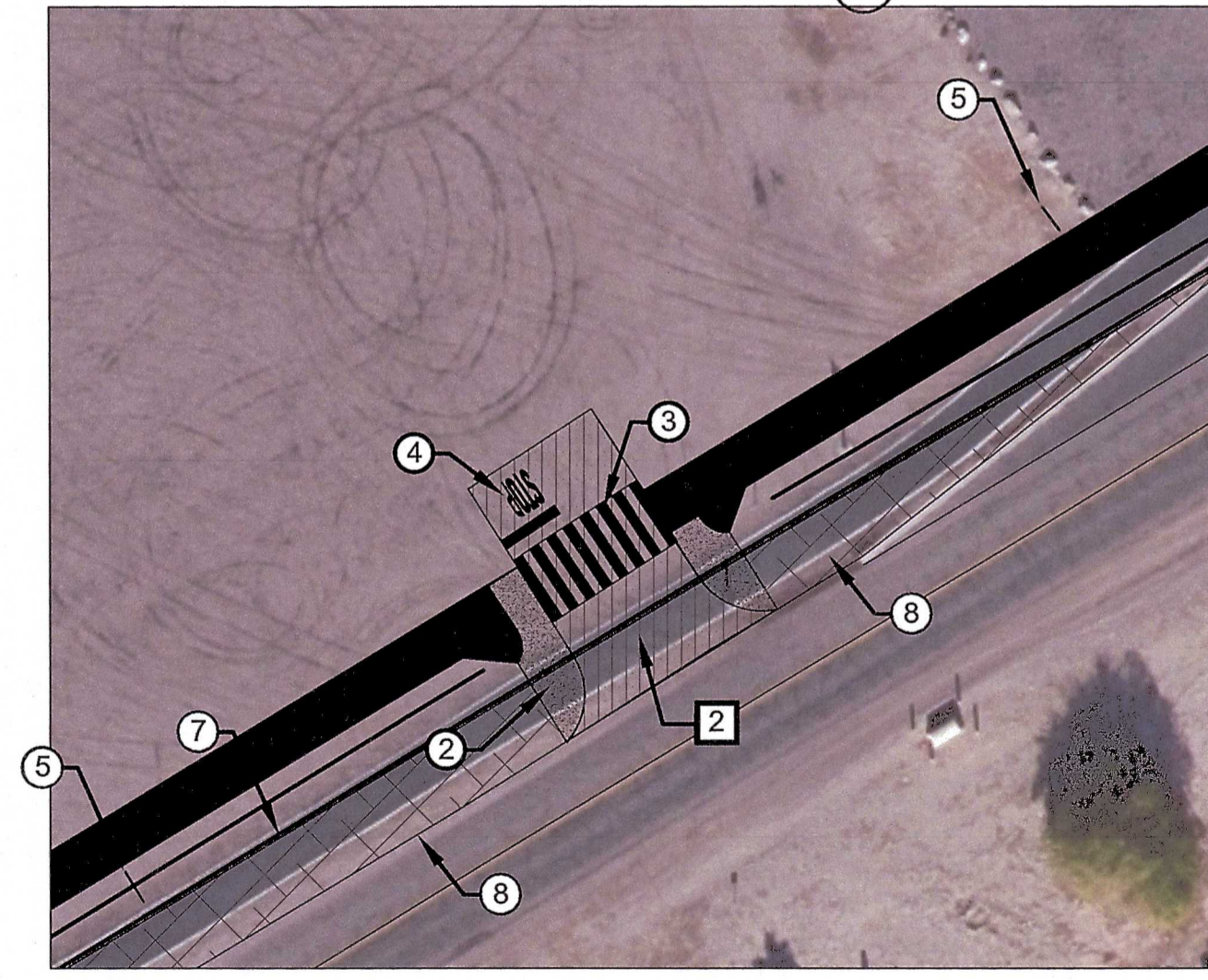
DRIVEWAY ⑨



DRIVEWAY ⑩



DRIVEWAY ⑪



DRIVEWAY ⑫

PAVEMENT NOTES:

- ① REMOVE AND RE-CONSTRUCT 3" ASPHALT ON 4" AGGREGATE BASE BIKE/PEDESTRIAN PATH PER TYPICAL SECTION A-A ON SHEET C-4.
- ② NEW ASPHALT DRIVEWAY PER DETAILS ON SHEET C-3.

CONSTRUCTION NOTES:

- ① CONSTRUCT 6" CONCRETE CURB PER LHC TYPICAL DETAIL 213.
- ② CONSTRUCT ADA RAMP.
- ③ CROSSWALK STRIPING PER MUTCD STANDARD 3B.18-CROSSWALK MARKINGS.
- ④ STRIPE STOP BAR PER MUTCD STANDARD 3B.16
- ⑤ PLACE ADVANCE SIGNAGE OF CROSSWALK AHEAD FOR PEDESTRIAN PATH PER MUTCD 3B-31.
- ⑥ STRIPE CENTERLINE OF PEDESTRIAN PATH

CONSTRUCTION NOTES: (Cont)

- ⑦ INSTALL DOUBLE BEAM GUARDRAIL TO PROTECT PEDESTRIANS ALONG PATH.
- ⑧ WIDEN THE ROADWAY 12 FT MINIMUM AS SHOWN IN TYPICAL SECTION B-B.

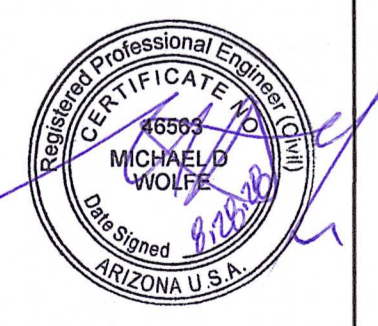
NO.	#	#	#	#	DATE

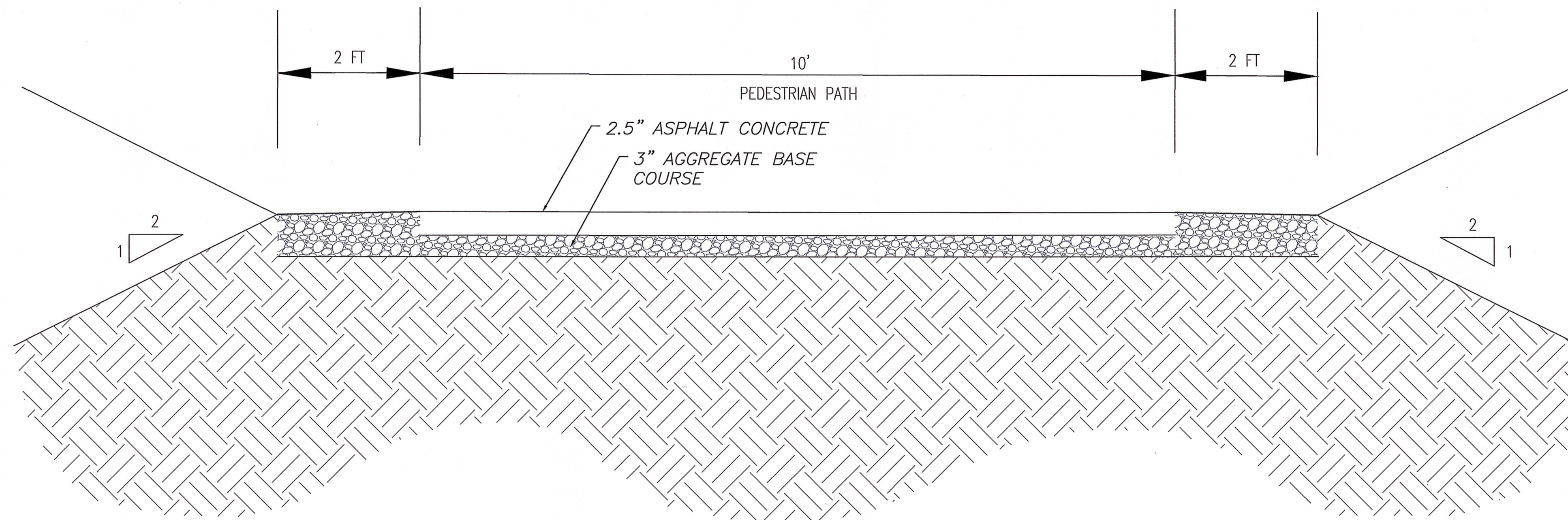
NO. # # # #



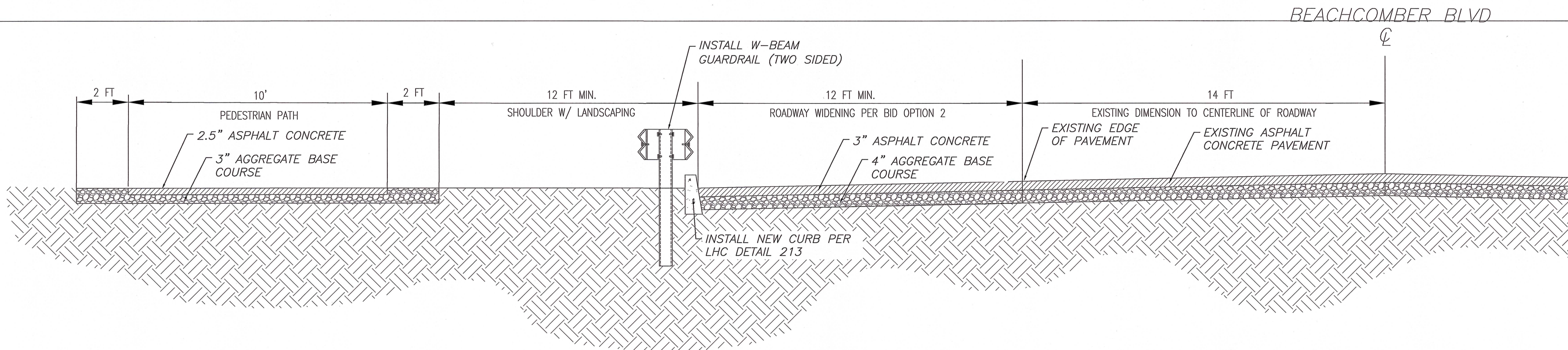
ISLAND PATH RE-PAVE  
#TB B24-PW-500412

Designed by: SMC  
Drawn by: SC  
Checked by: MW  
Date: 8/26/23  
Dwg scale: 1" = 20'





**A-A** TYPICAL SECTION  
SCALE 1"=1'



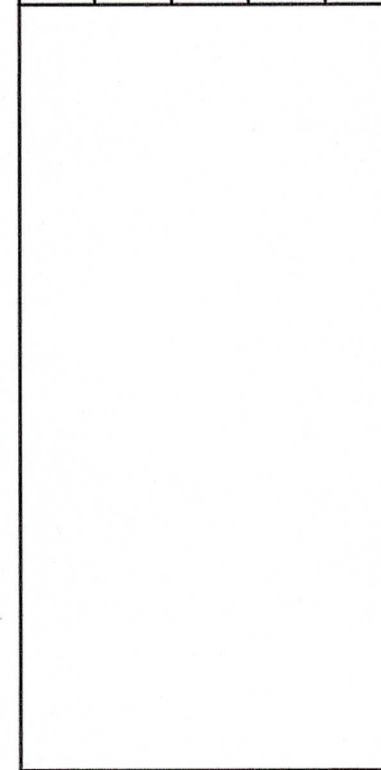
**B-B** TYPICAL SECTION  
SCALE 1"=2'

NO.	#	#	#	#	DATE



ISLAND PATH RE-PAVE  
#ITB B24-PW-500412

Designed by: SMC  
Drawn by: SC  
Checked by: MW  
Date: 6/26/23  
Dwg scale:



C-4