

GENERAL NOTES

- 1. ALL WATER UTILITY CONSTRUCTION TO CONFORM TO AAC R18-5-502 AND AAC R18-4-119 WATER SYSTEM STANDARDS, ADEQ BULLETIN 10, LAKE HAVASU CITY STANDARDS AND SPECIFICATIONS, MARICOPA ASSOCIATION OF GOVERNMENTS (MAG) STANDARD SPECIFICATIONS AND DETAILS UNLESS SPECIFICALLY MODIFIED ON THE PLANS.
2. THE OWNER SHALL BE NOTIFIED A MINIMUM OF 24 HOURS PRIOR TO BEGINNING ANY CONSTRUCTION.
3. ANY WORK PERFORMED WITHOUT THE KNOWLEDGE AND APPROVAL BY THE OWNER OR ENGINEER AND/OR ALL WORK MATERIAL NOT IN CONFORMANCE WITH THE PLANS AND SPECIFICATIONS IS SUBJECT TO REMOVAL AT THE CONTRACTOR'S EXPENSE.
...
31. THE CONTRACTOR SHALL PROVIDE PROTECTION TO PREVENT UNDERMINING OR DAMAGING THE STRUCTURAL INTEGRITY OF ALL POWER POLES, FENCES, BLOCK WALLS, SCREEN WALLS, RETAINING WALLS, HIGHWAY AND STREET SIGNS, OTHER UTILITY POLES, OR OTHER PRIVATE OR PUBLIC IMPROVEMENTS WITHIN THE PROJECT AREA.

GENERAL NOTES (CONT):

- PROJECT SHALL BE SUBSIDIARY TO OTHER BID ITEMS.
32. THE CONTRACTOR SHALL TAKE ALL APPROPRIATE STEPS TO MAINTAIN CONTINUOUS UTILITY SERVICE TO RESIDENTS AND BUSINESSES WITHIN THE PROJECT AREA.
33. ALL GRAVEL DRIVES AND GRAVEL ROADS DISTURBED DURING CONSTRUCTION SHALL BE REPLACED WITH A MINIMUM OF SIX INCHES (6") OF GRANULAR BACKFILL AS SPECIFIED IN SECTION 02300 AND SHALL BE CONSIDERED SUBSIDIARY TO OTHER PAY ITEMS.
...
37. ALL STREET CENTERLINES HAVE EXISTING PINS AT THE INTERSECTION OF THE STREET CENTERLINES AND SHALL BE PROTECTED IN PLACE.
...
39. ANY AND ALL SOILS, INCLUDING ROCK, ENCOUNTERED DURING EXCAVATION SHALL BE CONSIDERED UNCLASSIFIED AND SHALL BE INCIDENTAL TO OTHER ITEMS OF WORK.

LEGEND:

Table with 2 columns: LINE / SYMBOL and DESCRIPTION. Includes symbols for telephone, sanitary sewer, water main, gas main, overhead utility, force main, contours, abandoned pipe, right-of-way, property line, water main, concrete replacement, AC pavement replacement, blow off, meter box, mailbox, valve, hydrant, manhole, cleanout, fire hydrant, vacuum/air valve, cap, pothole location, and thrust block.

FLOOD INFORMATION:

SAID DESCRIBED PROPERTY IS LOCATED WITHIN AN AREA HAVING A ZONE DESIGNATION "ZONE X" AS SHOWN ON FLOOD INSURANCE RATE MAP NO. 04015C8176G, WITH A DATE OF IDENTIFICATION OF NOVEMBER 18, 2009, WHICH IS THE CURRENT FLOOD INSURANCE RATE MAP FOR THE COMMUNITY IN WHICH SAID PROPERTY IS SITUATED.

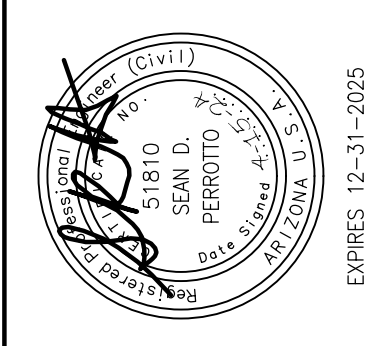
ABBREVIATIONS:

Table listing abbreviations and their full names. Includes terms like ABANDONED, ASBESTOS CEMENT PIPE, AGGREGATE, ARCHITECTURAL, AVERAGE, BUILDING, BOTTOM OF PIPE, BEGINNING OF VERTICAL CURB ELEVATION, etc.

PROJECT CONTROL:

Table detailing project settings and control data. Includes DATUM: NAD83, PROJECTION: ARIZONA STATE PLANE (WEST), CITY BASE STATION: N=1265542.33, ELEV=773.83, US HARN POINT - HAVASU, and LAKE HAVASU CITY SURVEY MONUMENT - SARA.

REVISION RECORD table with columns for NO, DATE, and DESCRIPTION.



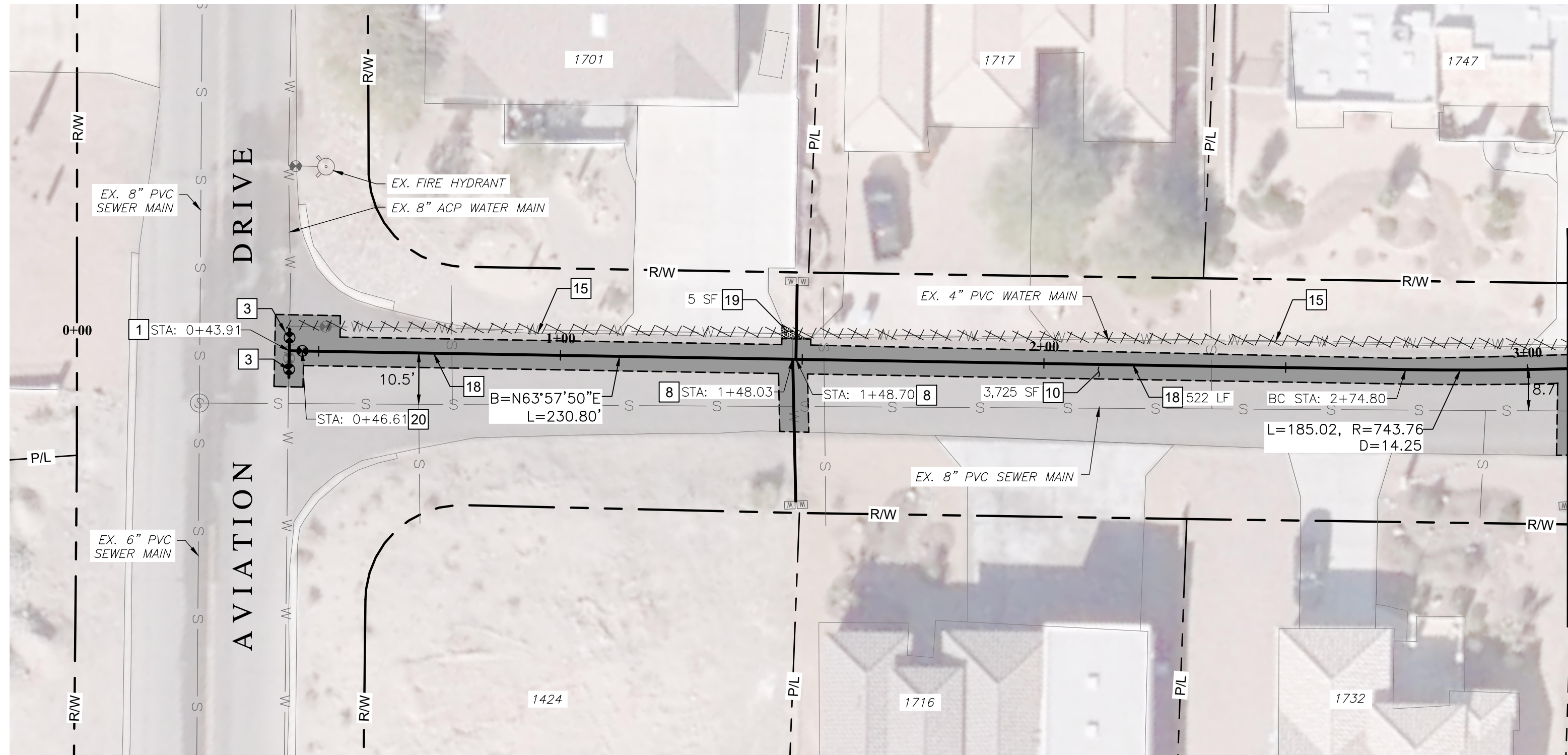
TRICO ENGINEERING, LLC logo and contact information. Address: 2100 AVONDALE AVENUE, SUITE 100, LAKE HAVASU CITY, AZ 86403.

2024 WATER MAIN REPLACEMENT PROJECT, PHASE 1 B24-PW-108019-500441. Includes project location: LAKE HAVASU CITY, 2330 MCCULLOCH BLVD N, LAKE HAVASU CITY, AZ 86403.



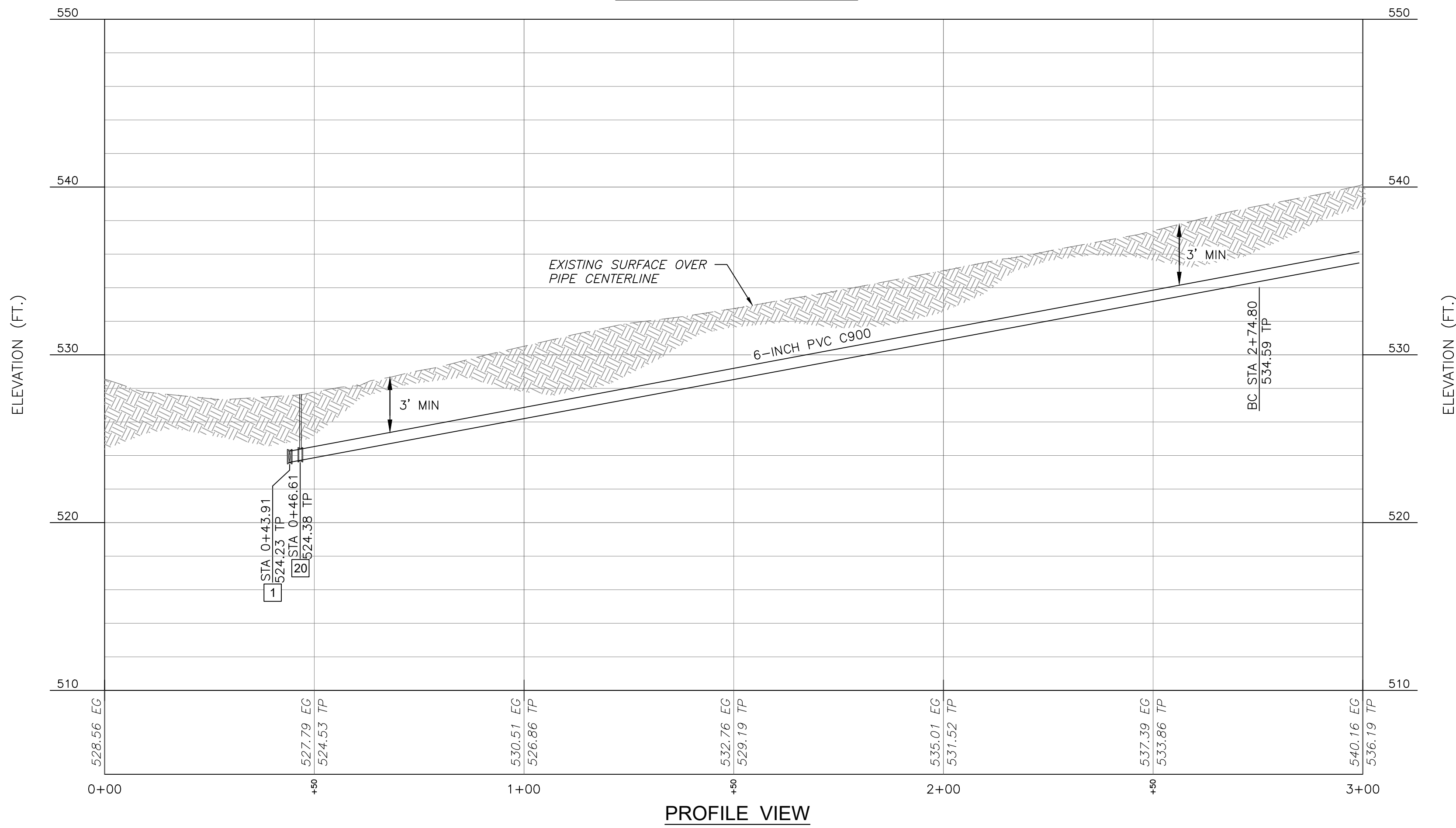
GENERAL NOTES table with columns for DATE, DRAWN BY, CHECKED BY, PROJECT NO., and APPROVED BY.

Vertical text on the left margin: P:\Info_Engineering_LLC\Projects\2023\23-024-024_Lake_Cover_Sheet.dwg, L5/6/15/2024 - emp@trico - LP: 4/15/2024 2:50 PM



PLAN VIEW

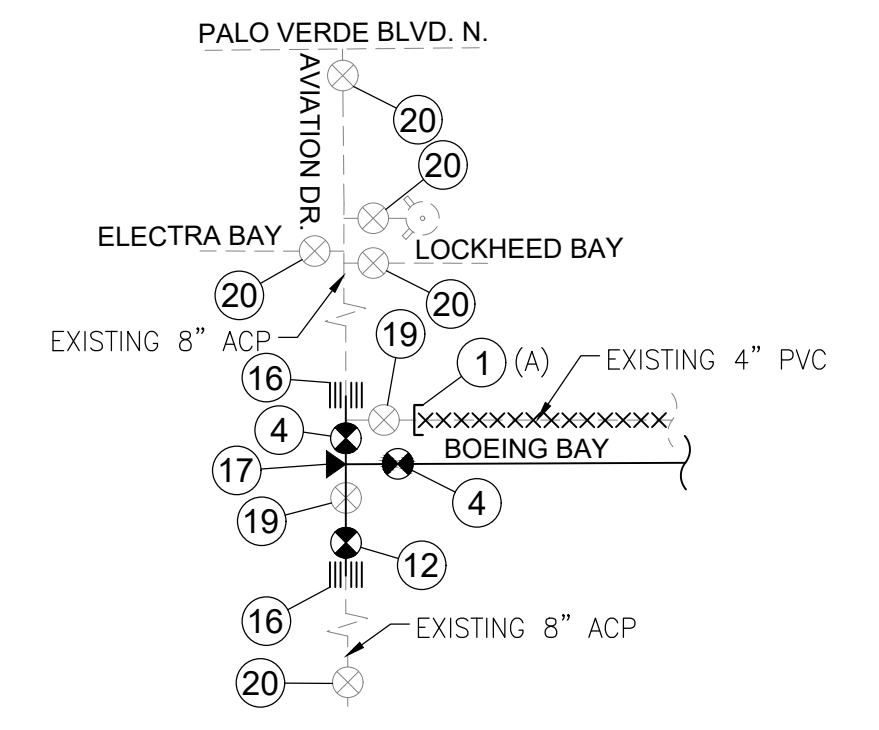
BOEING BAY



PROFILE VIEW

KEY NOTES:

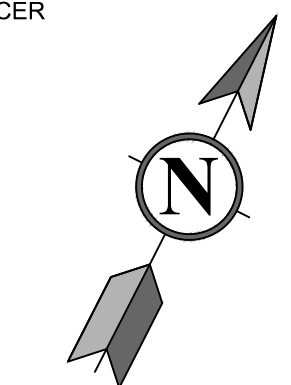
- 1 INSTALL DI TEE PER LHC SPECIFICATION 02550, USE FLEX COUPLINGS FOR CONNECTION TO EXISTING PIPE, SIZE PER PLAN.
- 2 INSTALL 6-INCH PVC C900 DR14 PIPE PER LHC STD. DTL. NO. 200, ON SHEET C-29, LENGTH PER PLAN.
- 3 INSTALL 8-INCH GATE VALVE WITH RISER PER LHC STD. DTL. NO. 300, ON SHEET C-29.
- 4 INSTALL DI FITTING WITH RESTRAINED JOINT PER LHC SPECIFICATION 02550, SIZE AND ANGLE PER PLAN.
- 5 INSTALL 1" AIR RELEASE / VACUUM VALVE ASSEMBLY PER LHC STD. DTL. NO. 310, ON SHEET C-30.
- 6 INSTALL FIRE HYDRANT ASSEMBLY PER LHC STD. DTL. NO. 320, ON SHEET C-30.
- 7 EXISTING WATER APPURTENANCE TO BE REMOVED.
- 8 INSTALL 1-INCH COPPER SERVICE ASSEMBLY PER DETAIL 3 ON SHEET C-31.
- 9 DROP WATERLINE UNDER EXISTING PER DTL. 2 ON SHEET C-31.
- 10 SAWCUT, REMOVE, AND REPLACE (6" WIDE) 2.5" AC PAVEMENT 0" AB. IN KIND, PATCH PER LIMITS SHOWN IN LHC STD. DTL. NO. 200, ON SHEET C-29.
- 11 REMOVE AND REPLACE 6" CURB PER LHC STD. DTL. NO. 213, ON SHEET C-29.
- 12 REMOVE AND REPLACE 6" CURB AND GUTTER PER LHC STD. DTL. NO. 214 ON SHEET C-29.
- 13 REMOVE AND REPLACE ROLLED CURB AND GUTTER PER LHC STD. DTL. NO. 215 ON SHEET C-31.
- 14 REMOVE AND REPLACE SIDEWALK PER LHC STD. DTL. NO. 216, ON SHEET C-29.
- 15 ABANDON EXISTING PIPE PER LHC STD. SPECIFICATION 02550.
- 16 INSTALL 2-INCH BLOW-OFF ASSEMBLY END OF LINE PER LHC STD. DTL. 314 ON SHEET C-30.
- 17 EXISTING RIM AND/OR WATER VALVE ELEVATION TO BE ADJUSTED TO FINISHED SURFACE.
- 18 INSTALL 6-INCH PVC C900 DR14 PIPE PER LHC STD. DTL. NO. 200, ON SHEET C-29, LENGTH PER PLAN.
- 19 CONTRACTOR TO REMOVE EXISTING DRIVEWAY AND APPROACH TO LIMITS SHOWN, AND REPLACE WITH DRIVEWAY PER LHC STD. DTL. NO. 201.
- 20 INSTALL 6-INCH GATE VALVE WITH RISER PER LHC STD. DTL. NO. 300, ON SHEET C-29.
- 21 VALVE TO REMAIN CLOSED.



CONNECTION DETAIL
N.T.S.

MATERIAL SCHEDULE:

- ① 4" CAP PER DTL. 1 ON SHEET C-31 AND IS NOTED WITH AN 'A' OR 'P' ON CONNECTION DETAIL
- ② 4" TRANSITION PIPE COUPLING
- ③ 6" C-900 PVC PIPE
- ④ 6" RESILIENT SEAT GATE VALVE W/ NUT OPR & VALVE BOX, PER DTLS ON SHT C-29
- ⑤ 6" CAP PER DTL. 1 ON SHEET C-31 AND IS NOTED WITH AN 'A' OR 'P' ON CONNECTION DETAIL
- ⑥ 6" TRANSITION PIPE COUPLING
- ⑦ 6" DI TEE WITH THRUST BLOCK PER DTL ON SHT C-30
- ⑧ 6" DI 90° BEND WITH THRUST BLOCK PER DTL ON SHT C-30
- ⑨ 8" CAP PER DTL. 1 ON SHT C-31 AND IS NOTED WITH AN 'A' OR 'P' ON CONNECTION DETAIL
- ⑩ 8"x6" DI CONCENTRIC REDUCER
- ⑪ 8" C-900 PVC PIPE
- ⑫ 8" RESILIENT SEAT GATE VALVE WINUT OPR & VALVE BOX, PER DTLS ON SHT C-29
- ⑬ 8" DI TEE WITH THRUST BLOCK PER DTL ON SHT C-30
- ⑭ 8"x6" DI CONCENTRIC REDUCER
- ⑮ 4" C-900 PVC PIPE
- ⑯ 8" TRANSITION PIPE COUPLING
- ⑰ 8"x8"x6" DI TEE WITH THRUST BLOCK PER DTL ON SHT C-30
- ⑱ 8" DI 90° BEND WITH THRUST BLOCK PER DTL ON SHT C-30
- ⑲ EXISTING VALVE TO BE REMOVED
- ⑳ EXISTING VALVE TO REMAIN
- ㉑ EXISTING WHARF HYDRANT TO BE REMOVED
- ㉒ 8"x4" DI CONCENTRIC REDUCER
- ㉓ 6"x4" DI CONCENTRIC REDUCER

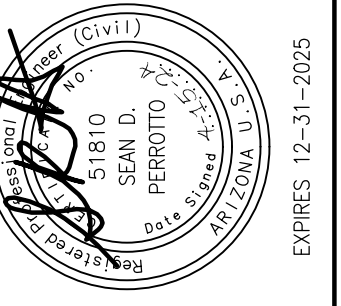


Contact Arizona 811 at least two full working days before you begin excavation

Call 811 or click Arizona811.com

REVISION RECORD

NO	DATE	DESCRIPTION



TRICO ENGINEERING, LLC

PREMISES
2700 N. WILSON AVENUE
SCOTTSDALE, AZ 85261

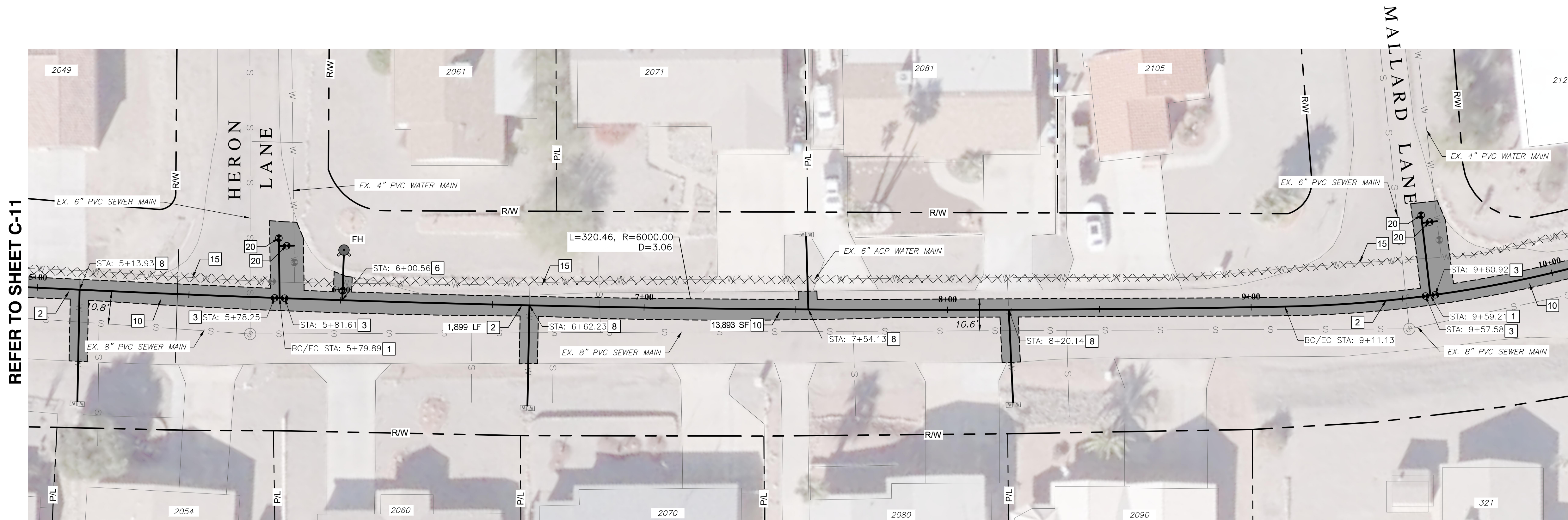
LAKE HAVASU CITY
2330 MCCULLOCH BLVD. N.
LAKE HAVASU CITY, AZ 86403
(928) 885-2116

2024 WATER MAIN REPLACEMENT PROJECT, PHASE 1
B24-PW-108019-500441
LAKE HAVASU CITY
2330 MCCULLOCH BLVD. N.
LAKE HAVASU CITY, AZ 86403
(928) 885-2116



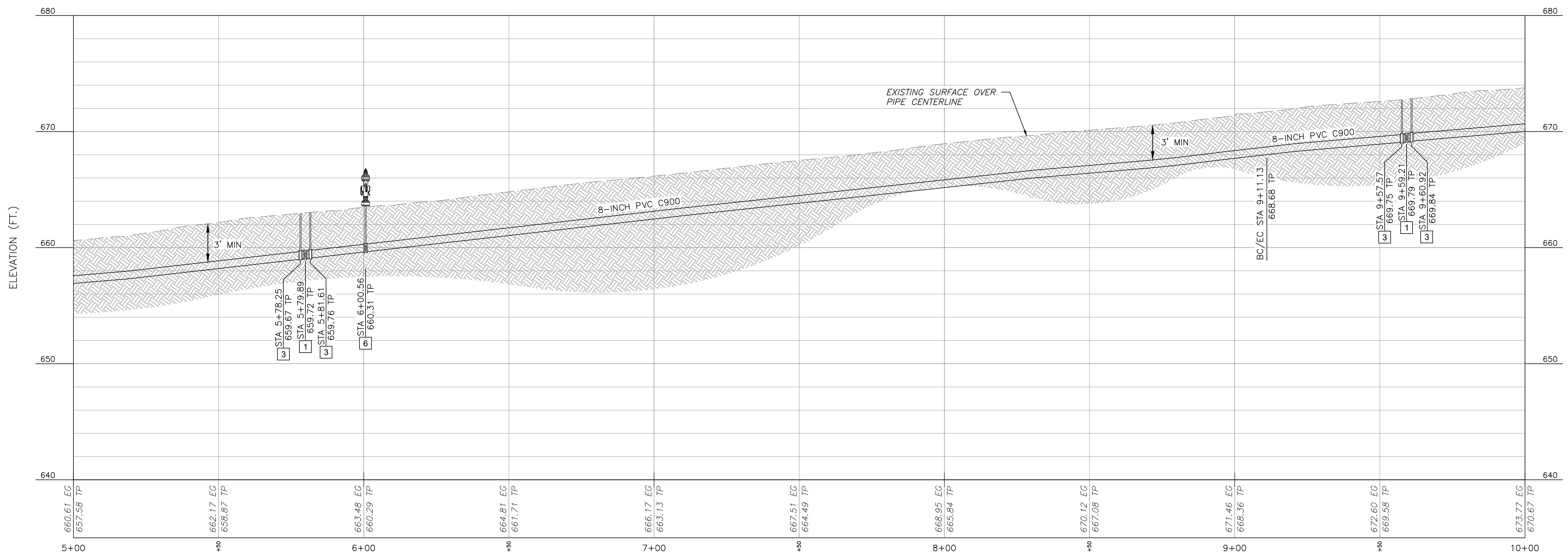
BOEING BAY 1

DATE: APRIL 15, 2024
DRAWN BY: JWC/CCP
DWG SCALE: 1"=20'
CHECKED BY: EJP/SDP
PROJECT NO: 23404
APPROVED BY: SDP



PLAN VIEW

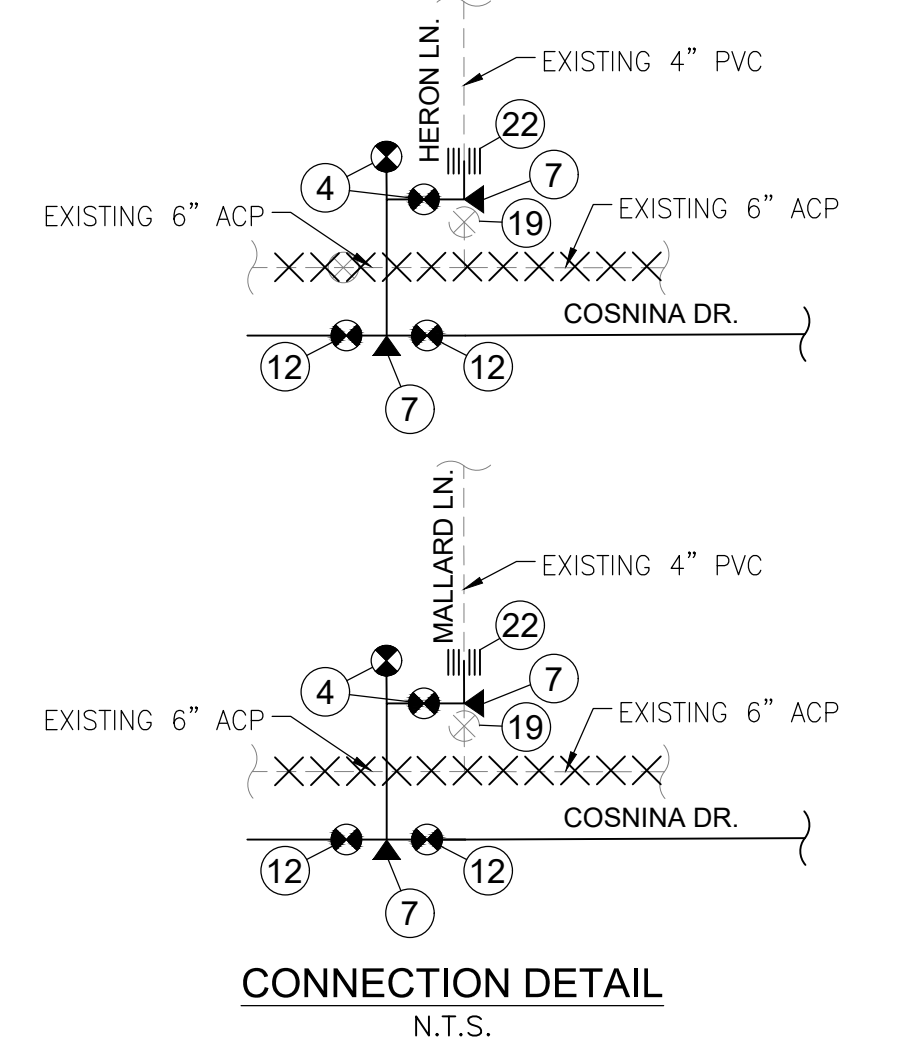
COSNINA DRIVE



PROFILE VIEW

KEY NOTES:

- 1 INSTALL DI TEE PER LHC SPECIFICATION 02550. USE FLEX COUPLINGS FOR CONNECTION TO EXISTING PIPE. SIZE PER PLAN.
- 2 INSTALL 8-INCH PVC C900 DR14 PIPE PER LHC STD. DTL. NO. 200. ON SHEET C-29. LENGTH PER PLAN.
- 3 INSTALL 8-INCH GATE VALVE WITH RISER PER LHC STD. DTL. NO. 300. ON SHEET C-29.
- 4 INSTALL DI FITTING WITH RESTRAINED JOINT PER LHC SPECIFICATION 02550. SIZE AND ANGLE PER PLAN.
- 5 INSTALL 1" AIR RELEASE / VACUUM VALVE ASSEMBLY PER LHC STD. DTL. NO. 310. ON SHEET C-30.
- 6 INSTALL FIRE HYDRANT ASSEMBLY PER LHC STD. DTL. NO. 320. ON SHEET C-30.
- 7 EXISTING WATER APPURTENANCE TO BE REMOVED.
- 8 INSTALL 1-INCH COPPER SERVICE ASSEMBLY PER DETAIL 3 ON SHEET C-31.
- 9 DROP WATERLINE UNDER EXISTING PER DTL. 2 ON SHEET C-31.
- 10 SAWCUT, REMOVE, AND REPLACE (6" WIDE) 2.5" AC PAVEMENT(0"AB. IN KIND. PATCH PER LIMITS SHOWN IN LHC STD. DTL. NO. 200. ON SHEET C-29.
- 11 REMOVE AND REPLACE 6" CURB PER LHC STD. DTL. NO. 213. ON SHEET C-29.
- 12 REMOVE AND REPLACE 6" CURB AND GUTTER PER LHC STD. DTL. NO. 214 ON SHEET C-29.
- 13 REMOVE AND REPLACE ROLLED CURB AND GUTTER PER LHC STD. DTL. NO. 215 ON SHEET C-31.
- 14 REMOVE AND REPLACE SIDEWALK PER LHC STD. DTL. NO. 216. ON SHEET C-29.
- 15 ABANDON EXISTING PIPE PER LHC STD. SPECIFICATION 02550.
- 16 INSTALL 2-INCH BLOW-OFF ASSEMBLY END OF LINE PER LHC STD. DTL. 314 ON SHEET C-30.
- 17 EXISTING RIM AND/OR WATER VALVE ELEVATION TO BE ADJUSTED TO FINISHED SURFACE.
- 18 INSTALL 8-INCH PVC C900 DR14 PIPE PER LHC STD. DTL. NO. 200. ON SHEET C-29. LENGTH PER PLAN.
- 19 CONTRACTOR TO REMOVE EXISTING DRIVEWAY AND APPROACH TO LIMITS SHOWN, AND REPLACE WITH DRIVEWAY PER LHC STD. DTL. NO. 201.
- 20 INSTALL 6-INCH GATE VALVE WITH RISER PER LHC STD. DTL. NO. 300. ON SHEET C-29.
- 21 VALVE TO REMAIN CLOSED.

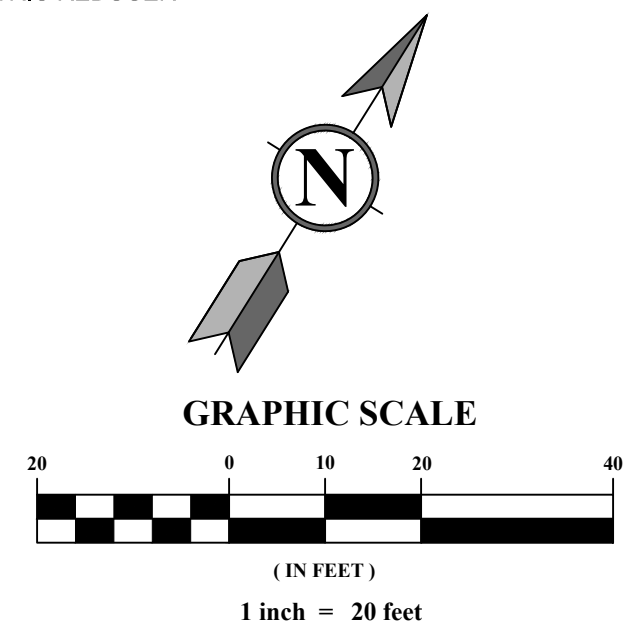


MATERIAL SCHEDULE:

- 1 4" CAP PER DTL. 1 ON SHEET C-31 AND IS NOTED WITH AN 'A' OR 'P' ON CONNECTION DETAIL
- 2 4" TRANSITION PIPE COUPLING
- 3 6" C-900 PVC PIPE
- 4 6" RESILIENT SEAT GATE VALVE W/ NUT OPR & VALVE BOX, PER DTLs ON SHT C-29
- 5 6" CAP PER DTL. 1 ON SHEET C-31 AND IS NOTED WITH AN 'A' OR 'P' ON CONNECTION DETAIL
- 6 6" TRANSITION PIPE COUPLING
- 7 6" DI TEE WITH THRUST BLOCK PER DTL ON SHT C-30
- 8 6" DI 90° BEND WITH THRUST BLOCK PER DTL ON SHT C-30
- 9 8" CAP PER DTL. 1 ON SHT C-31 AND IS NOTED WITH AN 'A' OR 'P' ON CONNECTION DETAIL
- 10 8"x6" DI OF CONCENTRIC REDUCER
- 11 8" C-900 PVC PIPE
- 12 8" RESILIENT SEAT GATE VALVE W/ NUT OPR & VALVE BOX, PER DTLs ON SHT C-29
- 13 8" DI TEE WITH THRUST BLOCK PER DTL ON SHT C-30
- 14 8"x6" DI OF CONCENTRIC REDUCER
- 15 4" C-900 PVC PIPE
- 16 8" TRANSITION PIPE COUPLING
- 17 8"x8"x6" DI TEE WITH THRUST BLOCK PER DTL ON SHT C-30
- 18 8" DI 90° BEND WITH THRUST BLOCK PER DTL ON SHT C-30
- 19 EXISTING VALVE TO BE REMOVED
- 20 EXISTING VALVE TO REMAIN
- 21 EXISTING WHARF HYDRANT TO BE REMOVED
- 22 8"x4" DI OF CONCENTRIC REDUCER
- 23 6"x4" DI OF CONCENTRIC REDUCER

Contact Arizona 811 at least two full working days before you begin excavation

Call 811 or click Arizona811.com



NO	DATE	REVISION RECORD	DESCRIPTION



TRICO ENGINEERING, LLC

PREMISES:
 3100 N. AVENUE 103, SUITE 200
 LAKE HAVASU CITY, AZ 86403
 (928) 288-6441

2024 WATER MAIN REPLACEMENT
 PROJECT, PHASE I
 B24-PW-108019-500441
 LAKE HAVASU CITY
 2330 MCCULLOCH BLVD N.
 LAKE HAVASU CITY, AZ 86403
 (928) 855-2116



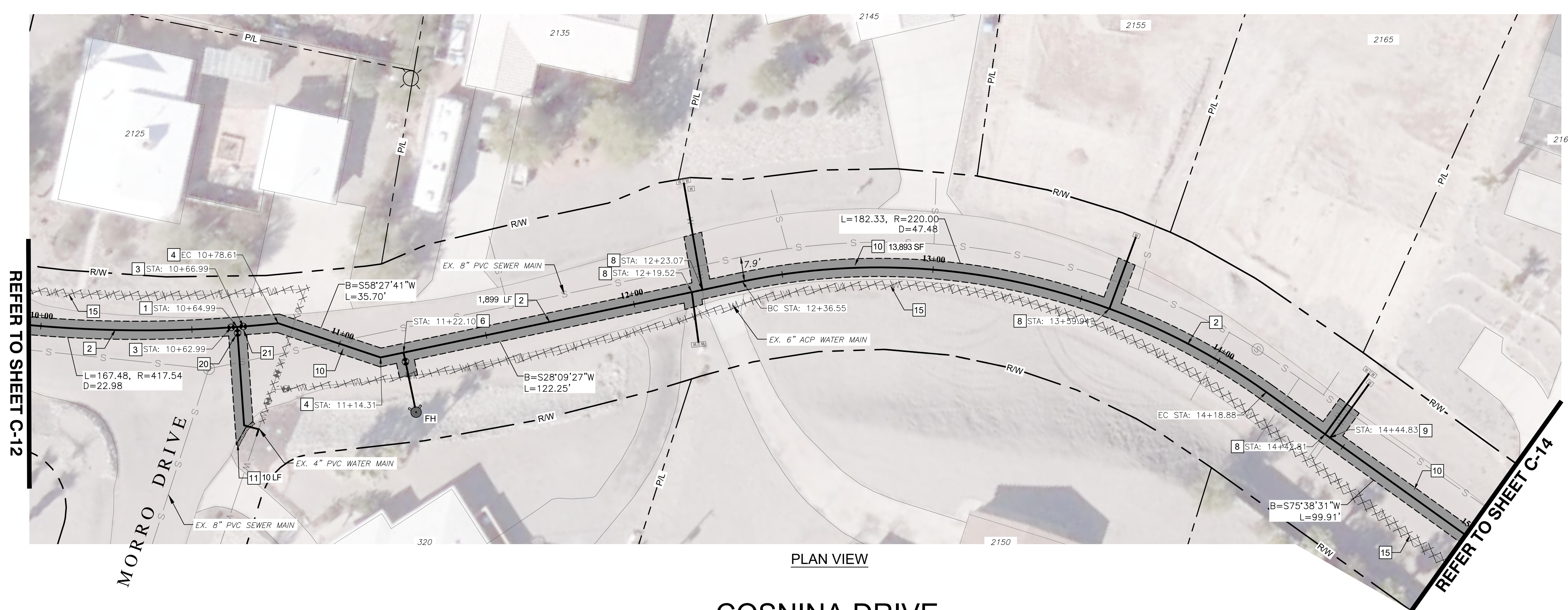
COSNINA DRIVE II

DATE: APRIL 15, 2024 DRAWN BY: JWC/CCP
 DWG SCALE: 1"=20' CHECKED BY: EJP/SDD
 PROJECT NO: 23404
 APPROVED BY: SDD

DRAWING NO.: **C-12**
 SHEET 12 OF 31

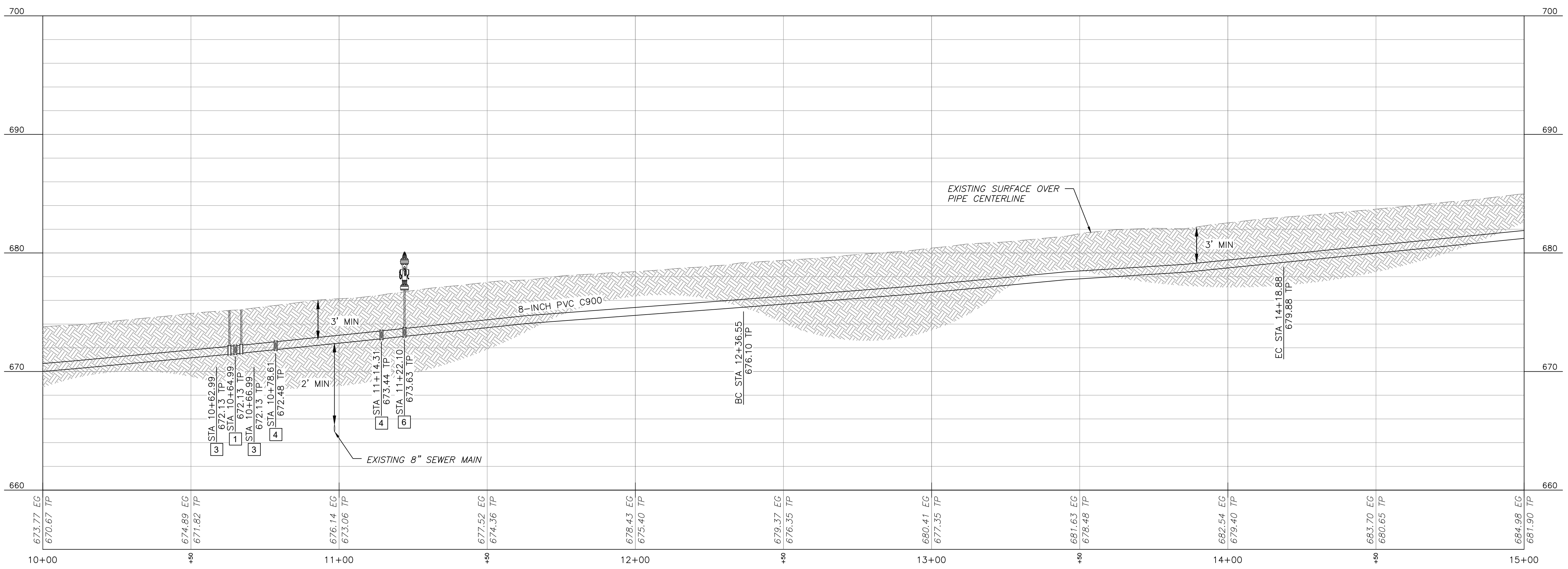
C:\Trico Engineering LLC\Projects\2024\B24-PW-108019-500441\Drawings\24-04-024-Waterline Phase I.dwg LSC/LV/2024 - enp/engr - LP - 4/15/2024 2:57 PM

C:\Trico Engineering\LLC\Projects\2024\24-COSINA_DRIVE_P1-24-Water_Main_Replacement_Phase_1\17-CAD\Improvement_Phase_1\24-COSINA_DRIVE_P1-24-Water_Main_Replacement_Phase_1.dwg - L.P. 4/15/2024 2:58 PM



PLAN VIEW

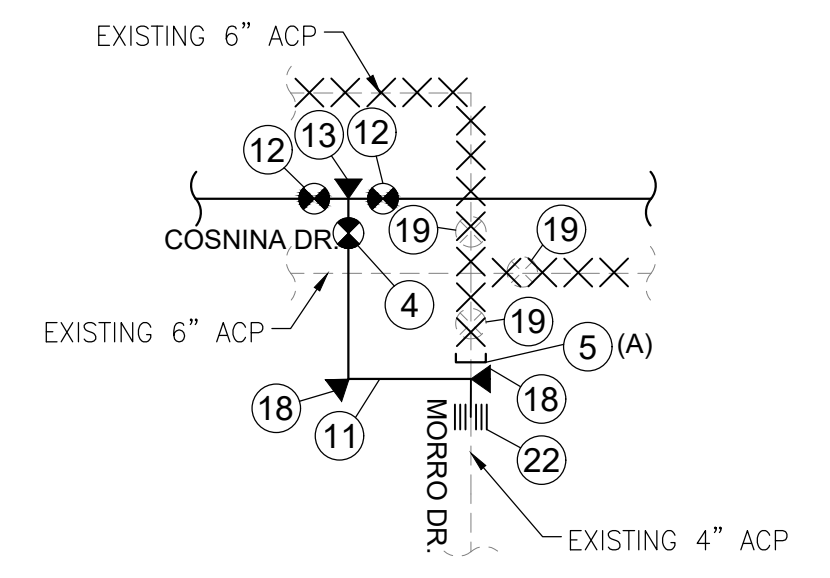
COSINA DRIVE



PROFILE VIEW

KEY NOTES:

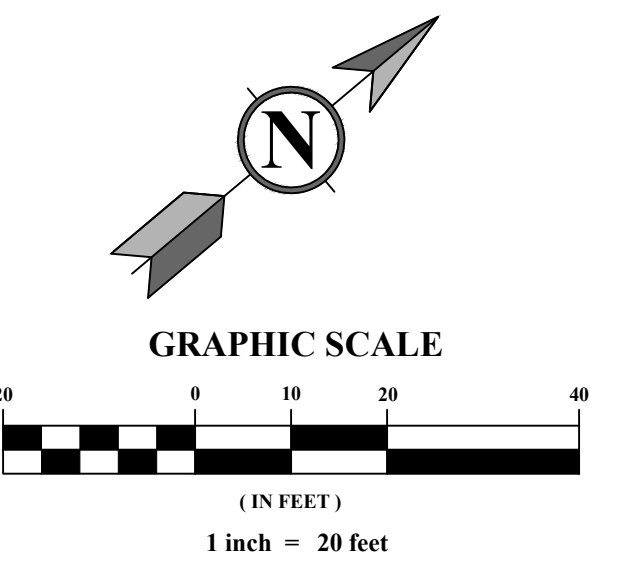
- 1 INSTALL DI TEE PER LHC SPECIFICATION 02550, USE FLEX COUPLINGS FOR CONNECTION TO EXISTING PIPE. SIZE PER PLAN.
- 2 INSTALL 8-INCH PVC C900 DR14 PIPE PER LHC STD. DTL. NO. 200, ON SHEET C-29. LENGTH PER PLAN.
- 3 INSTALL 8-INCH GATE VALVE WITH RISER PER LHC STD. DTL. NO. 300, ON SHEET C-29.
- 4 INSTALL DI FITTING WITH RESTRAINED JOINT PER LHC SPECIFICATION 02550, SIZE AND ANGLE PER PLAN.
- 5 INSTALL 1" AIR RELEASE / VACUUM VALVE ASSEMBLY PER LHC STD. DTL. NO. 310, ON SHEET C-30.
- 6 INSTALL FIRE HYDRANT ASSEMBLY PER LHC STD. DTL. NO. 320, ON SHEET C-30.
- 7 EXISTING WATER APPURTENANCE TO BE REMOVED.
- 8 INSTALL 1-INCH COPPER SERVICE ASSEMBLY PER DETAIL 3 ON SHEET C-31.
- 9 DROP WATERLINE UNDER EXISTING PER DTL. 2 ON SHEET C-31.
- 10 SAWCUT, REMOVE, AND REPLACE (6' WIDE) 2.5" AC PAVEMENT(0"AB, IN KIND, PATCH PER LIMITS SHOWN IN LHC STD. DTL. NO. 200, ON SHEET C-29.
- 11 REMOVE AND REPLACE 6" CURB PER LHC STD. DTL. NO. 213, ON SHEET C-29.
- 12 REMOVE AND REPLACE 6" CURB AND GUTTER PER LHC STD. DTL. NO. 214 ON SHEET C-29.
- 13 REMOVE AND REPLACE ROLLED CURB AND GUTTER PER LHC STD. DTL. NO. 215 ON SHEET C-31.
- 14 REMOVE AND REPLACE SIDEWALK PER LHC STD. DTL. NO. 216, ON SHEET C-29.
- 15 ABANDON EXISTING PIPE PER LHC STD. SPECIFICATION 02550.
- 16 INSTALL 2-INCH BLOW-OFF ASSEMBLY END OF LINE PER LHC STD. DTL. 314 ON SHEET C-30.
- 17 EXISTING RIM AND/OR WATER VALVE ELEVATION TO BE ADJUSTED TO FINISHED SURFACE.
- 18 INSTALL 8-INCH PVC C900 DR14 PIPE PER LHC STD. DTL. NO. 200, ON SHEET C-29. LENGTH PER PLAN.
- 19 CONTRACTOR TO REMOVE EXISTING DRIVEWAY AND APPROACH TO LIMITS SHOWN, AND REPLACE WITH DRIVEWAY PER LHC STD. DTL. NO. 201.
- 20 INSTALL 8-INCH GATE VALVE WITH RISER PER LHC STD. DTL. NO. 300, ON SHEET C-29.
- 21 VALVE TO REMAIN CLOSED.



CONNECTION DETAIL
N.T.S.

MATERIAL SCHEDULE:

- 1 4" CAP PER DTL. 1 ON SHEET C-31 AND IS NOTED WITH AN 'A' OR 'P' ON CONNECTION DETAIL
- 2 4" TRANSITION PIPE COUPLING
- 3 6" C-900 PVC PIPE
- 4 6" RESILIENT SEAT GATE VALVE W/ NUT OPR & VALVE BOX, PER DTLs ON SHT C-29
- 5 6" CAP PER DTL. 1 ON SHEET C-31 AND IS NOTED WITH AN 'A' OR 'P' ON CONNECTION DETAIL
- 6 6" TRANSITION PIPE COUPLING
- 7 6" DI TEE WITH THRUST BLOCK PER DTL ON SHT C-30
- 8 6" DI 90° BEND WITH THRUST BLOCK PER DTL ON SHT C-30
- 9 8" CAP PER DTL. 1 ON SHT C-31 AND IS NOTED WITH AN 'A' OR 'P' ON CONNECTION DETAIL
- 10 8"x6" DI CONCENTRIC REDUCER
- 11 8" C-900 PVC PIPE
- 12 6" RESILIENT SEAT GATE VALVE W/ NUT OPR & VALVE BOX, PER DTLs ON SHT C-29
- 13 8" DI TEE WITH THRUST BLOCK PER DTL ON SHT C-30
- 14 8"x6" DI CONCENTRIC REDUCER
- 15 4" C-900 PVC PIPE
- 16 8" TRANSITION PIPE COUPLING
- 17 8"x8"x6" DI TEE WITH THRUST BLOCK PER DTL ON SHT C-30
- 18 8" DI 90° BEND WITH THRUST BLOCK PER DTL ON SHT C-30
- 19 EXISTING VALVE TO BE REMOVED
- 20 EXISTING VALVE TO REMAIN
- 21 EXISTING WHARF HYDRANT TO BE REMOVED
- 22 8"x4" DI CONCENTRIC REDUCER
- 23 6"x4" DI CONCENTRIC REDUCER



Contact Arizona 811 at least two full working days before you begin excavation

ARIZONA811

Call 811 or click Arizona811.com

NO	DATE	REVISION RECORD	DESCRIPTION

TRICO ENGINEERING, LLC

PREMISES:
2330 MCCULLOCH BLVD N.
LAKE HAVASU CITY, AZ 86403
(928) 855-2116

2024 WATER MAIN REPLACEMENT
PROJECT, PHASE 1
B24-PW-108019-500441

LAKE HAVASU CITY
2330 MCCULLOCH BLVD N.
LAKE HAVASU CITY, AZ 86403
(928) 855-2116

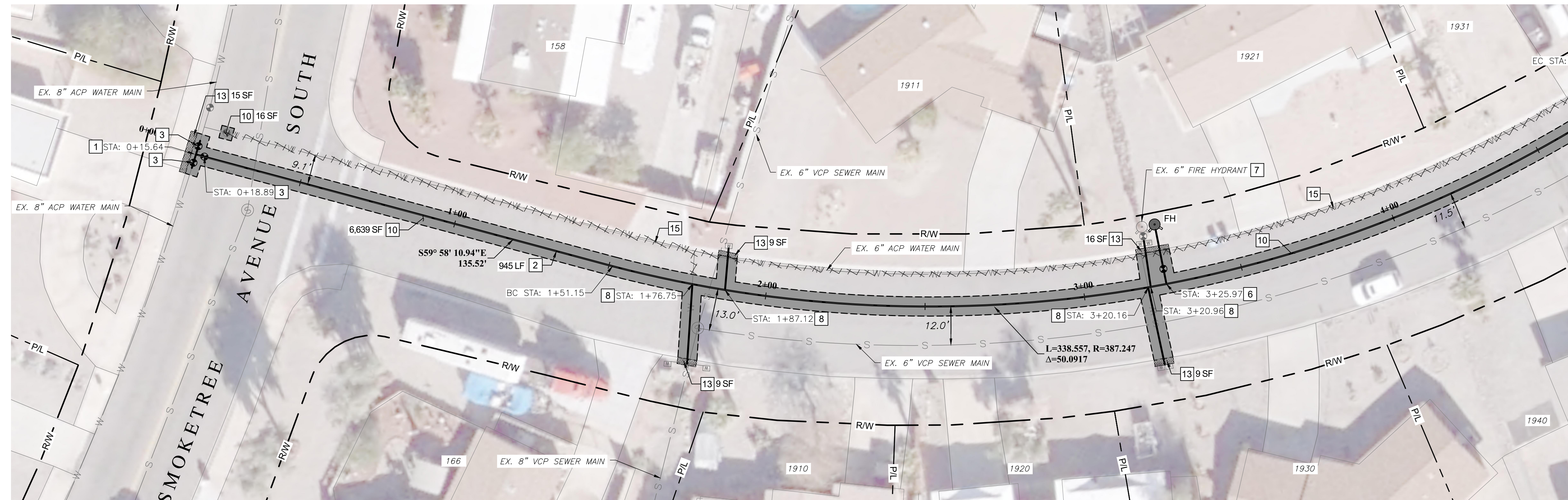
LAKE HAVASU CITY, ARIZONA • 811 (928) 855-2116

COSINA DRIVE III

DATE: APRIL 15, 2024 DRAWN BY: JWC/CCP
DWG SCALE: 1"=20' CHECKED BY: 23484
PROJECT NO: APPROVED BY: SUP:

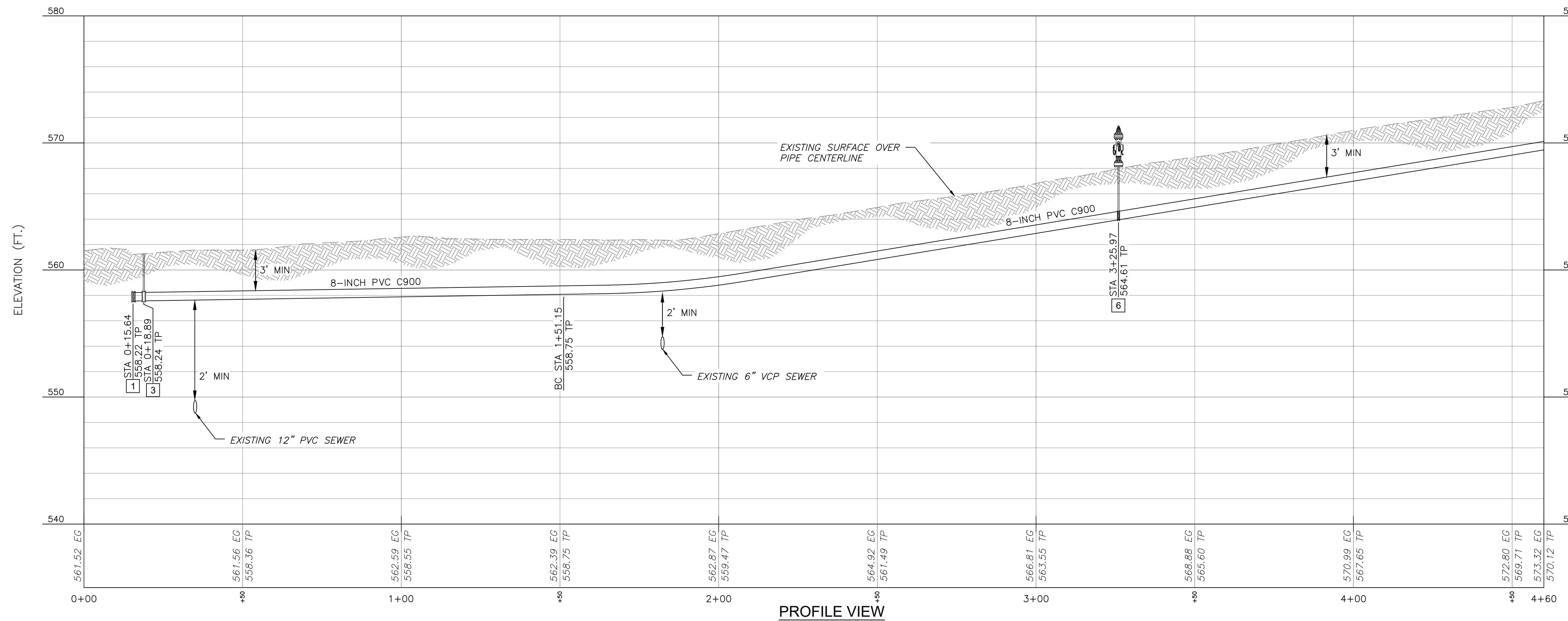
DRAWING NO.: **C-13**
SHEET 13 OF 31

C:\Trico Engineering LLC\Projects\2024\24-054-LAC-PT-24-Water Main Replacement Phase 1\24-054-Waterline Plans\15/2024 - encompments) - LP - 4/15/2024 - 303.PW



PLAN VIEW

POPLAR DRIVE

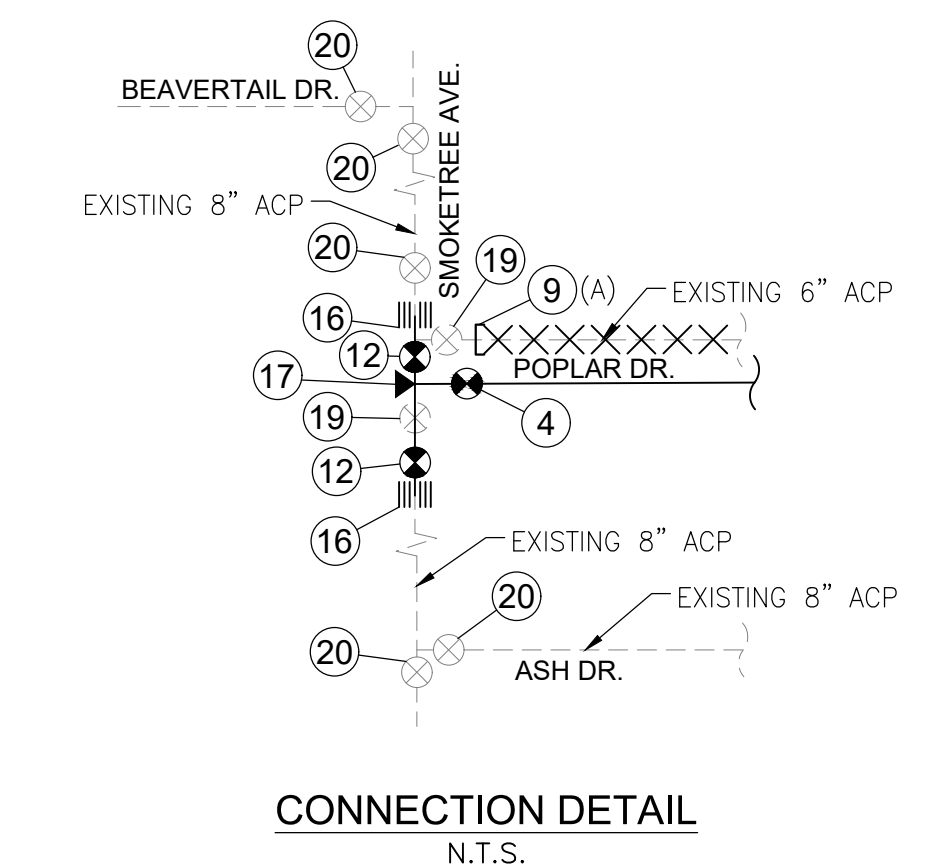


PROFILE VIEW

KEY NOTES:

- 1 INSTALL DI TEE PER LHC SPECIFICATION 02550, USE FLEX COUPLINGS FOR CONNECTION TO EXISTING PIPE. SIZE PER PLAN.
- 2 INSTALL 8-INCH PVC C900 DR14 PIPE PER LHC STD. DTL. NO. 200, ON SHEET C-29, LENGTH PER PLAN.
- 3 INSTALL 8-INCH GATE VALVE WITH RISER PER LHC STD. DTL. NO. 300, ON SHEET C-29.
- 4 INSTALL DI FITTING WITH RESTRAINED JOINT PER LHC SPECIFICATION 02550, SIZE AND ANGLE PER PLAN.
- 5 INSTALL 1" AIR RELEASE / VACUUM VALVE ASSEMBLY PER LHC STD. DTL. NO. 310, ON SHEET C-30.
- 6 INSTALL FIRE HYDRANT ASSEMBLY PER LHC STD. DTL. NO. 320, ON SHEET C-30.
- 7 EXISTING WATER APPURTENANCE TO BE REMOVED.
- 8 INSTALL 1-INCH COPPER SERVICE ASSEMBLY PER DETAIL 3 ON SHEET C-31.
- 9 DROP WATERLINE UNDER EXISTING PER DTL. 2 ON SHEET C-31.
- 10 SAWCUT, REMOVE, AND REPLACE (6" WIDE) 2.5" AC PAVEMENT 0" AB. IN KIND, PATCH PER LIMITS SHOWN IN LHC STD. DTL. NO. 200, ON SHEET C-29.
- 11 REMOVE AND REPLACE 6" CURB PER LHC STD. DTL. NO. 213, ON SHEET C-29.
- 12 REMOVE AND REPLACE 6" CURB AND GUTTER PER LHC STD. DTL. NO. 214 ON SHEET C-29.
- 13 REMOVE AND REPLACE ROLLED CURB AND GUTTER PER LHC STD. DTL. NO. 215 ON SHEET C-31.
- 14 REMOVE AND REPLACE SIDEWALK PER LHC STD. DTL. NO. 216, ON SHEET C-29.
- 15 ABANDON EXISTING PIPE PER LHC STD. SPECIFICATION 02550.
- 16 INSTALL 2-INCH BLOW-OFF ASSEMBLY END OF LINE PER LHC STD. DTL. 314 ON SHEET C-30.
- 17 EXISTING RIM AND/OR WATER VALVE ELEVATION TO BE ADJUSTED TO FINISHED SURFACE.
- 18 INSTALL 8-INCH PVC C900 DR14 PIPE PER LHC STD. DTL. NO. 200, ON SHEET C-29, LENGTH PER PLAN.
- 19 CONTRACTOR TO REMOVE EXISTING DRIVEWAY AND APPROACH TO LIMITS SHOWN, AND REPLACE WITH DRIVEWAY PER LHC STD. DTL. NO. 201.
- 20 INSTALL 6-INCH GATE VALVE WITH RISER PER LHC STD. DTL. NO. 300, ON SHEET C-29.
- 21 VALVE TO REMAIN CLOSED.

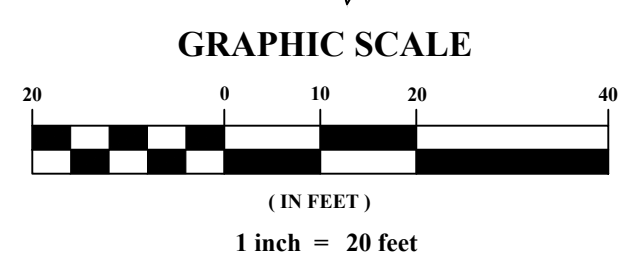
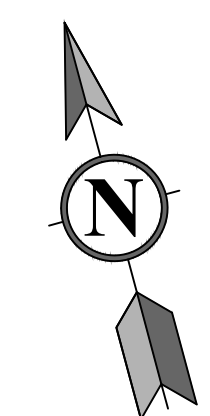
REFER TO SHEET C-20



CONNECTION DETAIL
N.T.S.

MATERIAL SCHEDULE:

- ① 4" CAP PER DTL. 1 ON SHEET C-31 AND IS NOTED WITH AN 'A' OR 'P' ON CONNECTION DETAIL
- ② 4" TRANSITION PIPE COUPLING
- ③ 6" C-900 PVC PIPE
- ④ 6" RESILIENT SEAT GATE VALVE W/ NUT OPR & VALVE BOX, PER DTLs ON SHT C-29
- ⑤ 6" CAP PER DTL. 1 ON SHEET C-31 AND IS NOTED WITH AN 'A' OR 'P' ON CONNECTION DETAIL
- ⑥ 6" TRANSITION PIPE COUPLING
- ⑦ 6" DI TEE WITH THRUST BLOCK PER DTL ON SHT C-30
- ⑧ 6" DI 90° BEND WITH THRUST BLOCK PER DTL ON SHT C-30
- ⑨ 8" CAP PER DTL. 1 ON SHT C-31 AND IS NOTED WITH AN 'A' OR 'P' ON CONNECTION DETAIL
- ⑩ 8"x6" DI CONCENTRIC REDUCER
- ⑪ 8" C-900 PVC PIPE
- ⑫ 8" RESILIENT SEAT GATE VALVE W/ NUT OPR & VALVE BOX, PER DTLs ON SHT C-29
- ⑬ 8" DI TEE WITH THRUST BLOCK PER DTL ON SHT C-30
- ⑭ 8"x6" DI CONCENTRIC REDUCER
- ⑮ 4" C-900 PVC PIPE
- ⑯ 4" TRANSITION PIPE COUPLING
- ⑰ 8"x8"x6" DI TEE WITH THRUST BLOCK PER DTL ON SHT C-30
- ⑱ 8" DI 90° BEND WITH THRUST BLOCK PER DTL ON SHT C-30
- ⑲ EXISTING VALVE TO BE REMOVED
- ⑳ EXISTING VALVE TO REMAIN
- ㉑ EXISTING WHARF HYDRANT TO BE REMOVED
- ㉒ 8"x4" DI CONCENTRIC REDUCER
- ㉓ 6"x4" DI CONCENTRIC REDUCER



Contact Arizona 811 at least two full working days before you begin excavation

Call 811 or click Arizona811.com

NO	DATE	REVISION RECORD	DESCRIPTION

TRICO ENGINEERING, LLC

PRENS
3800 N. WILSON BLVD
SCOTTSDALE, AZ 85262
(480) 382-4444

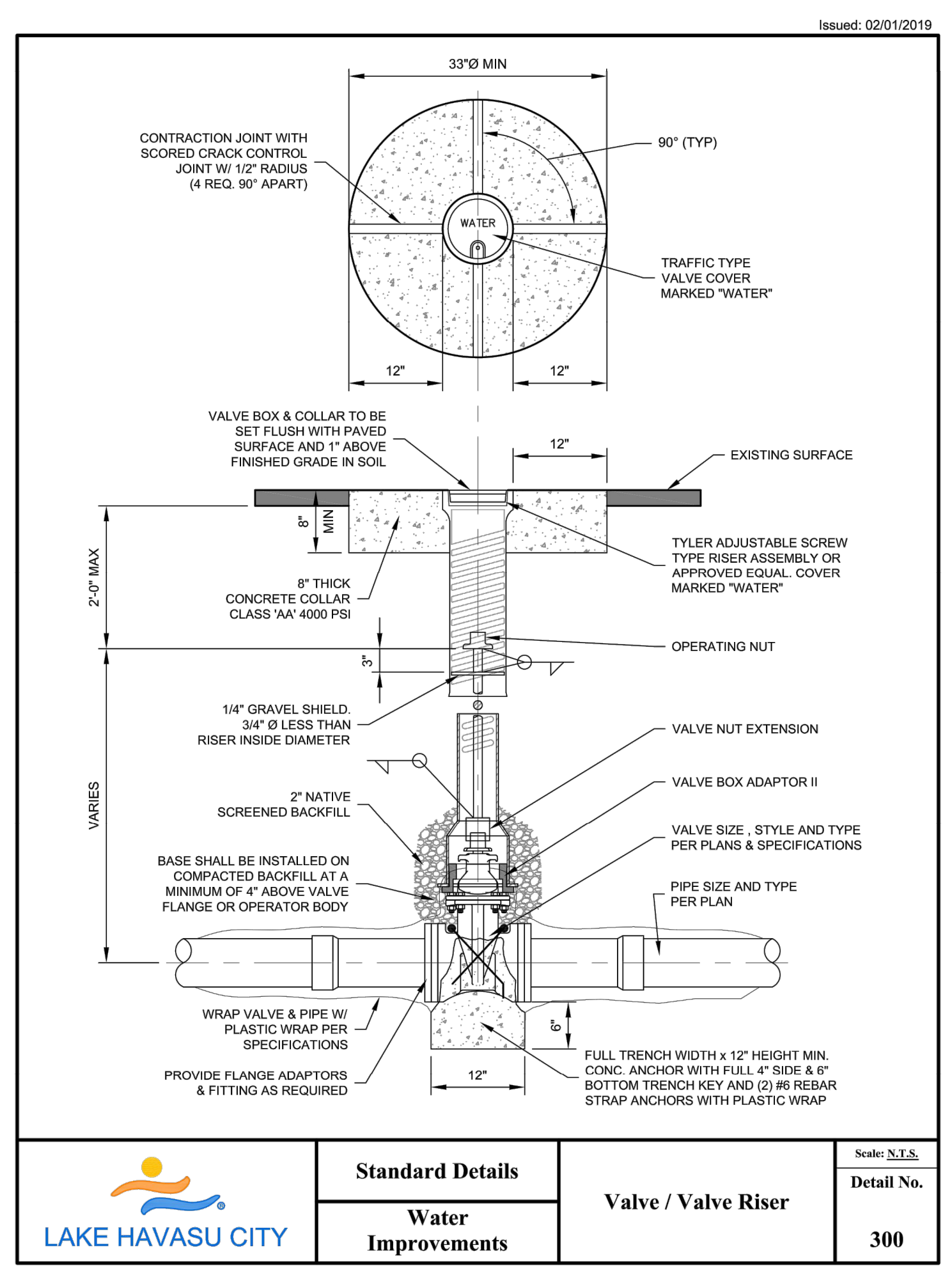
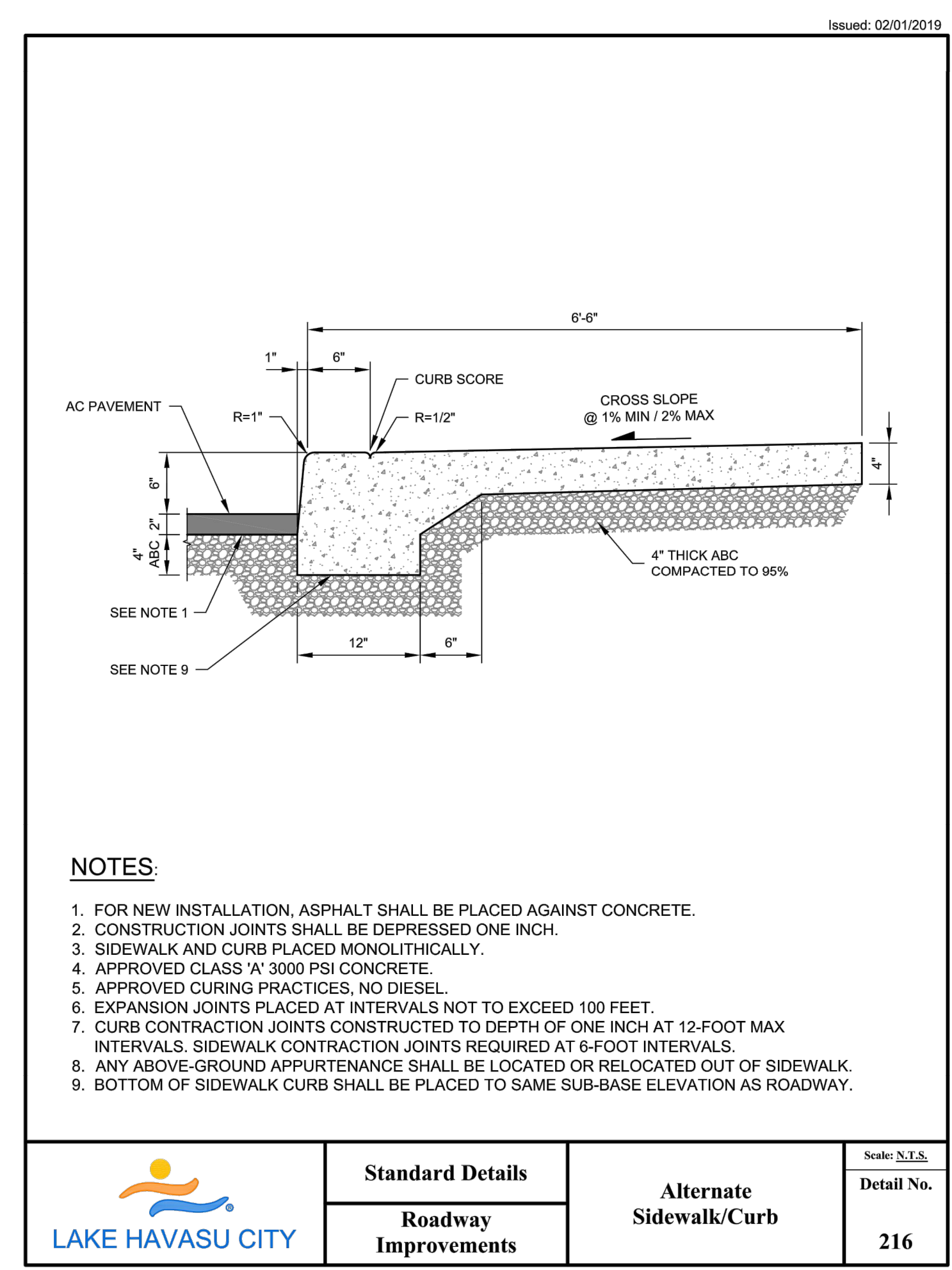
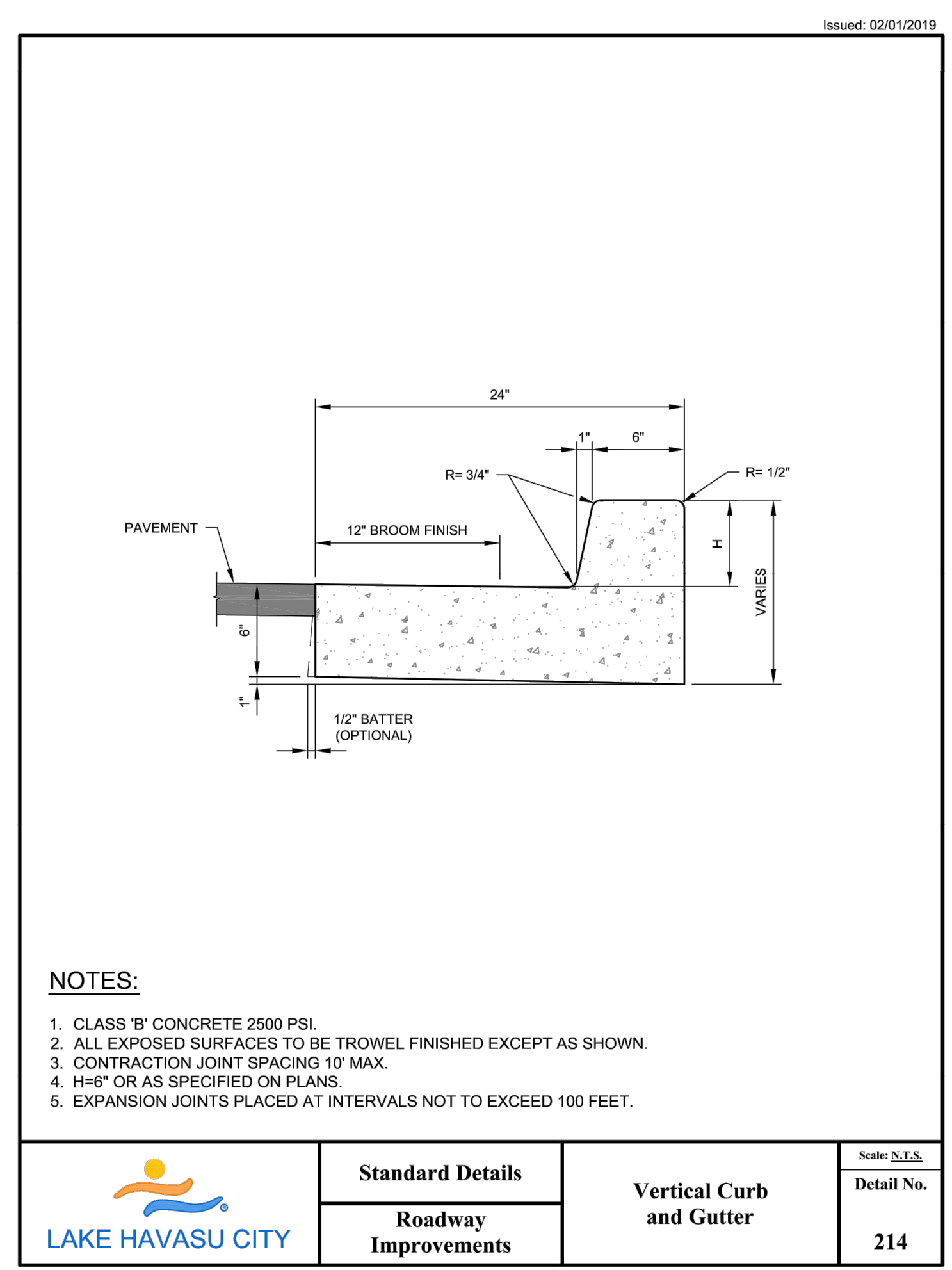
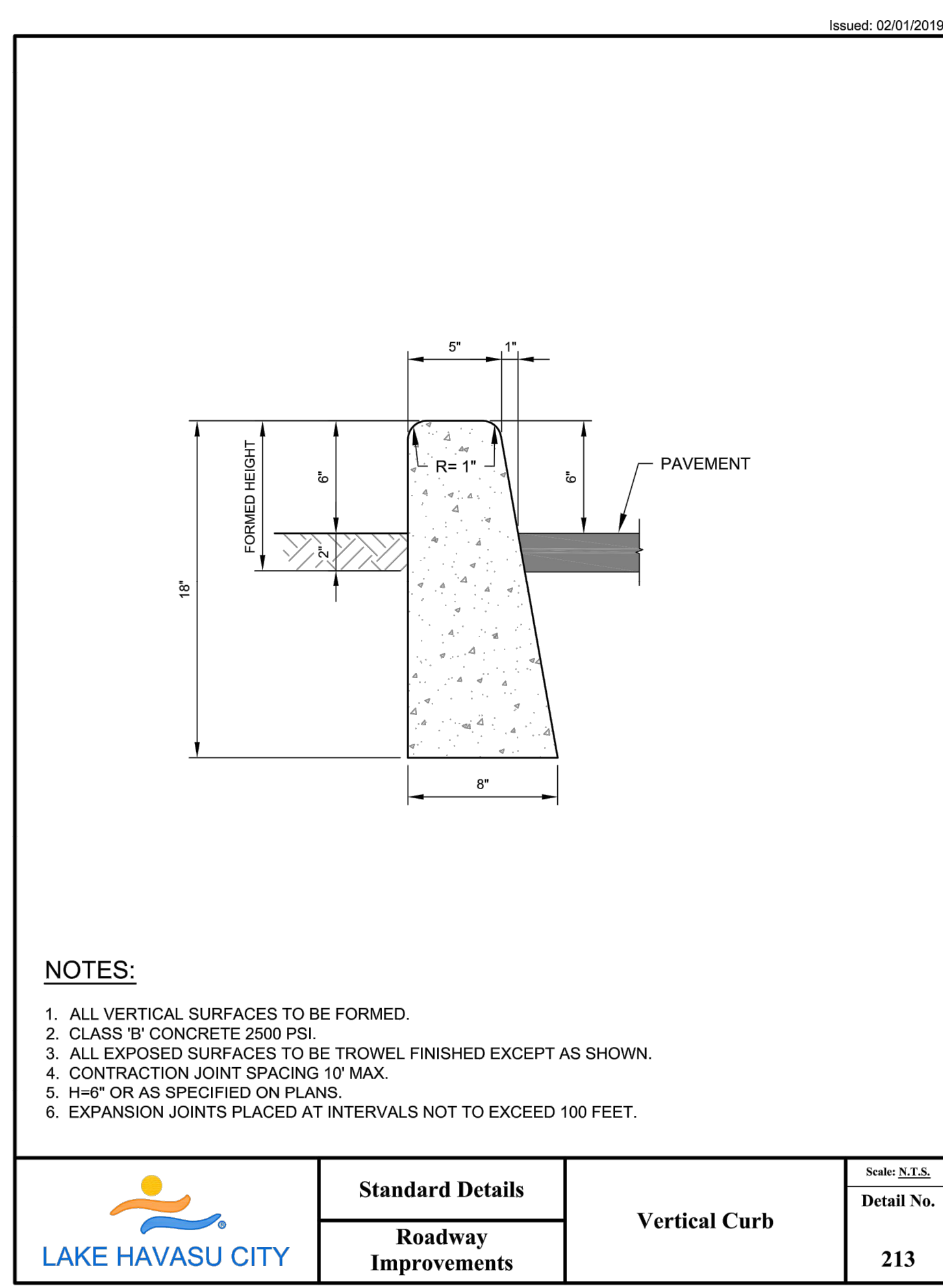
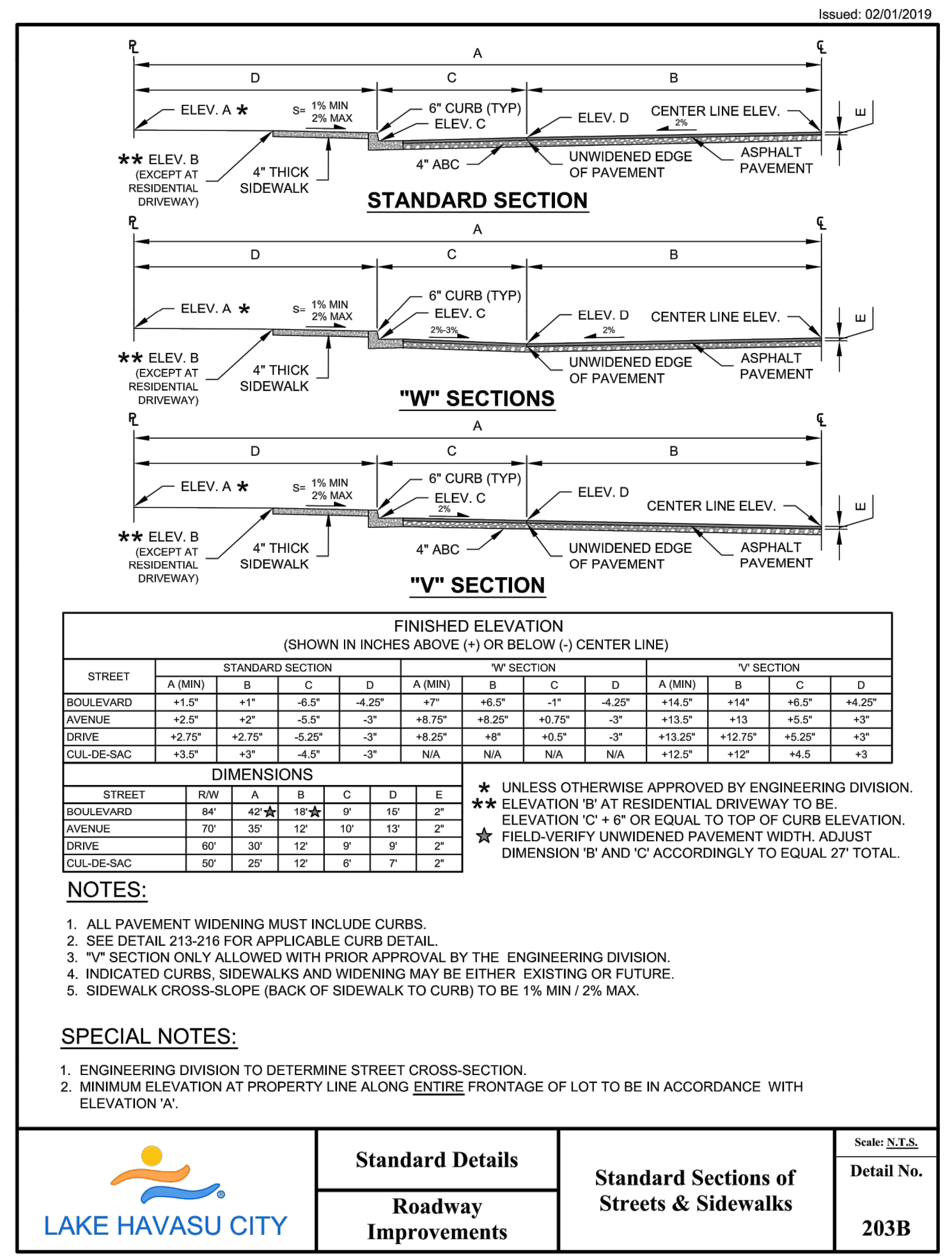
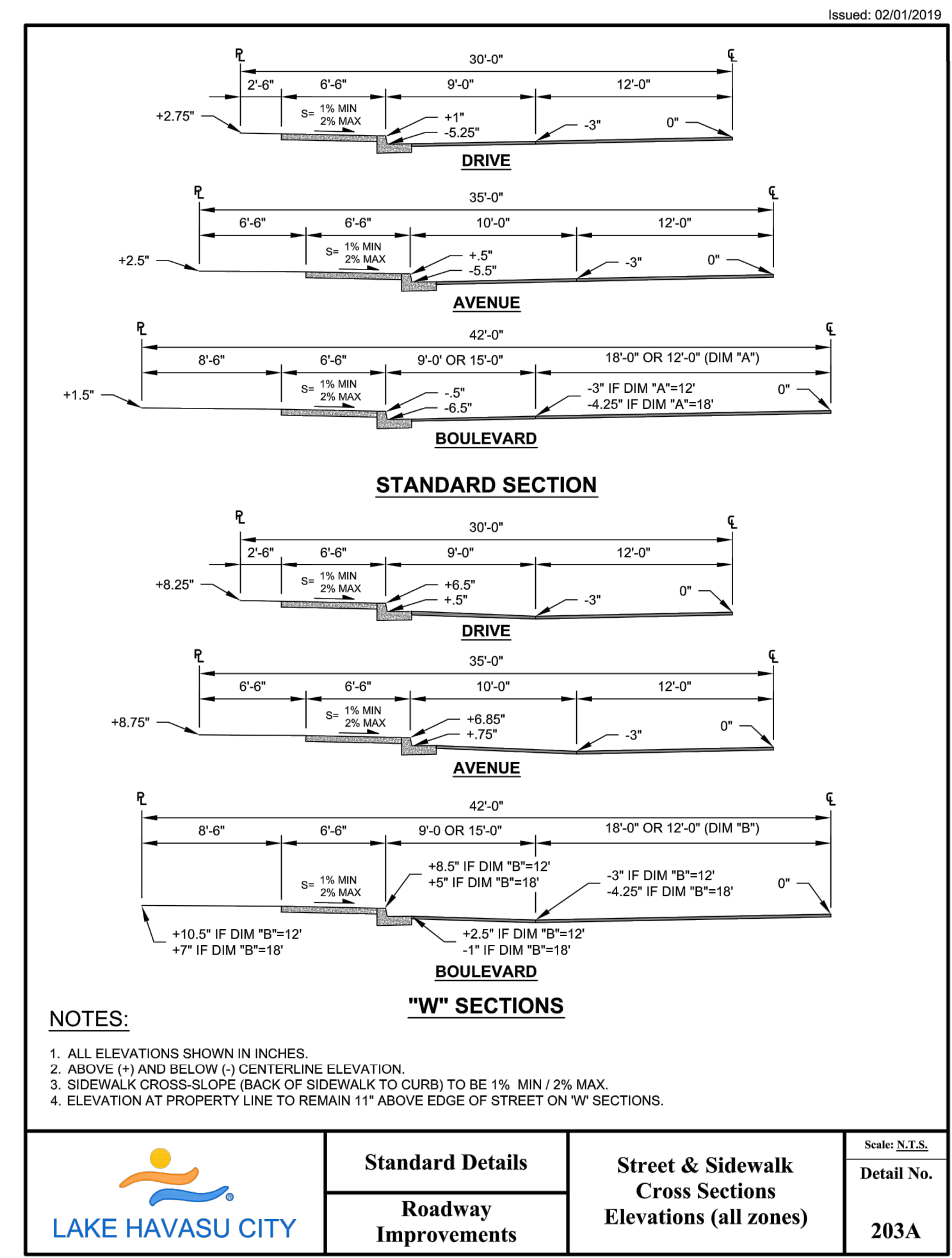
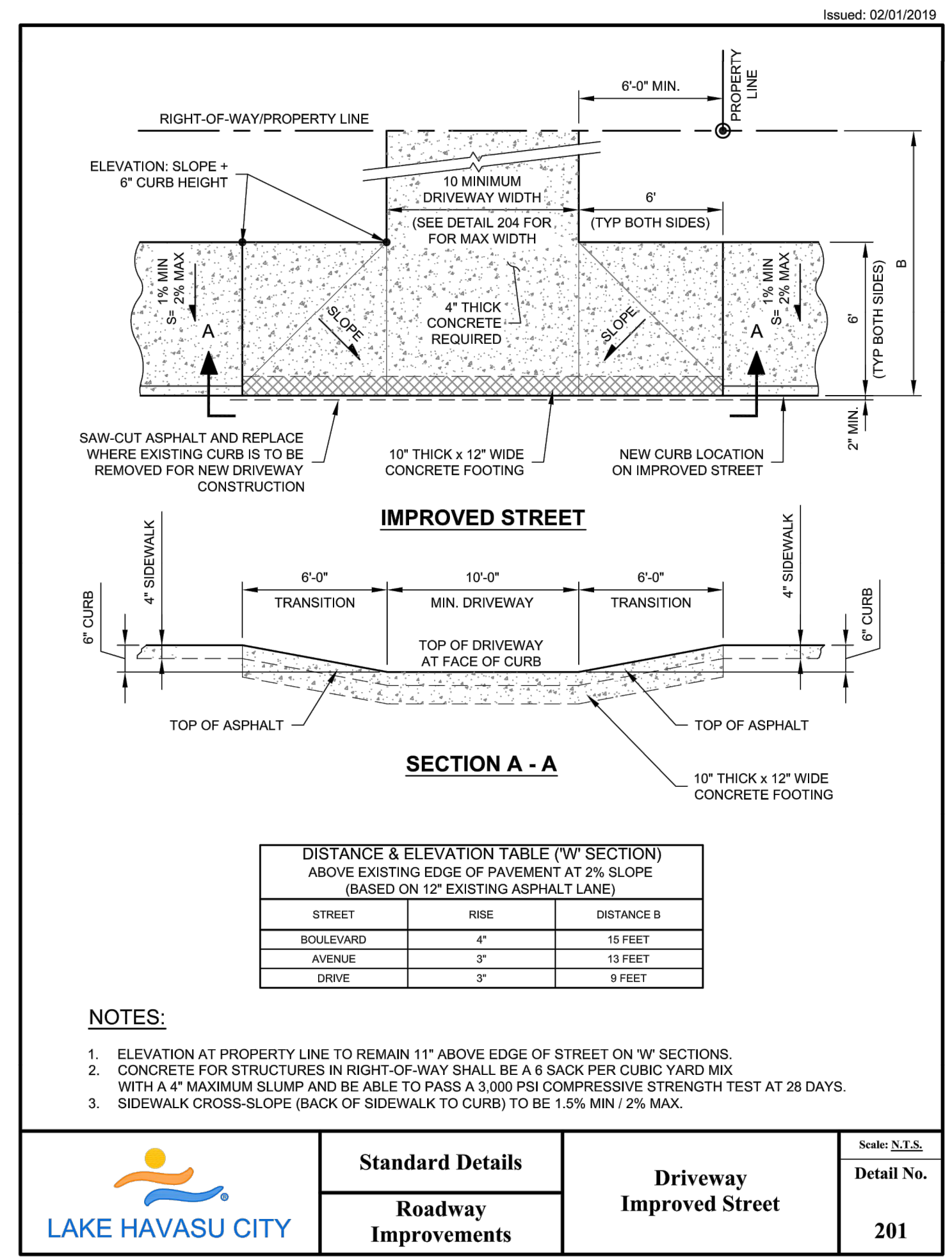
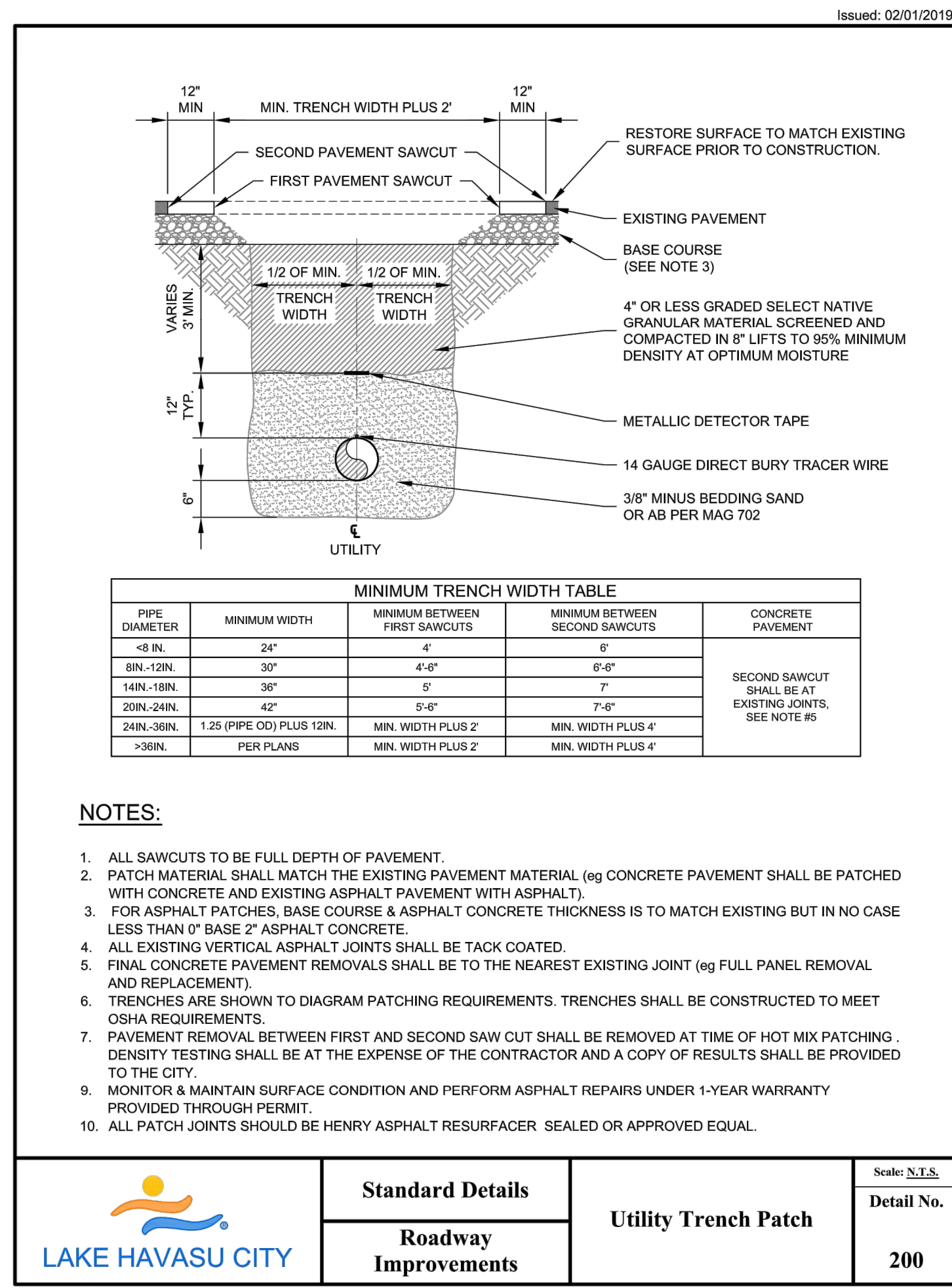
2024 WATER MAIN REPLACEMENT PROJECT, PHASE 1
B24-PW-108019-500441
 LAKE HAVASU CITY
 2330 MCCULLOCH BLVD N.
 LAKE HAVASU CITY, AZ 86403
 (928) 855-2116

LAKE HAVASU CITY, ARIZONA • 811 (928) 855-2116

POPLAR DRIVE I

DATE: APRIL 15, 2024 DRAWN BY: JWC/CCP
 DWG SCALE: 1"=20' CHECKED BY: EJP/SBP
 PROJECT NO: 24-044
 APPROVED BY: [Signature]

DRAWING NO: **C-19**
 SHEET 19 OF 31



TRICO ENGINEERING, LLC
 1700 W. AVENUE, SUITE 200
 SCOTTSDALE, AZ 85258
 (480) 988-2116

REVISION RECORD

NO.	DATE	DESCRIPTION

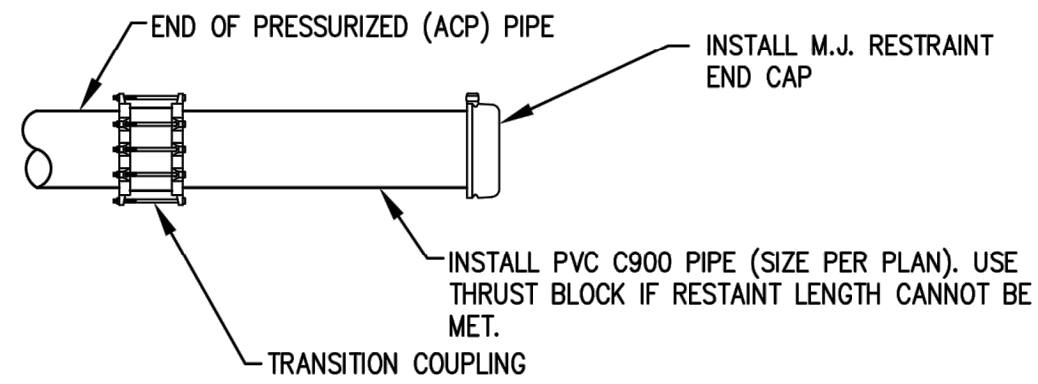
2024 WATER MAIN REPLACEMENT PROJECT, PHASE 1
B24-PW-108019-500441
 LAKE HAVASU CITY
 2330 MCCULLOCH BLVD. N.
 LAKE HAVASU CITY, AZ 86403
 (928) 855-2116

GENERAL DETAILS I

DATE: APRIL 15, 2024
 DRAWN BY: JWC/CCP
 DWG SCALE: 1"=20'
 CHECKED BY: JWC/CCP
 PROJECT NO: B24-PW-108019-500441
 APPROVED BY: JWC/CCP

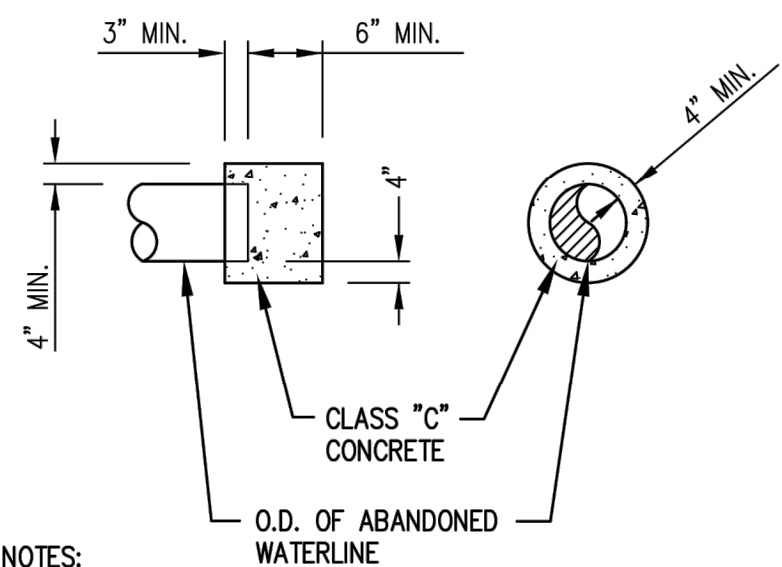
DATE: APRIL 15, 2024
 DRAWN BY: JWC/CCP
 DWG SCALE: 1"=20'
 CHECKED BY: JWC/CCP
 PROJECT NO: B24-PW-108019-500441
 APPROVED BY: JWC/CCP

C-29
 SHEET 29 OF 31



- NOTES:
1. ALL WORK INCLUDING MATERIAL, EXCAVATION, CUTTING & PLUGGING OF EXISTING WATERLINE(S), COMPACTION, AND PAVEMENT REMOVAL AND REPLACEMENT SHALL BE INCIDENTAL TO THE WATERLINE INSTALLATION BID ITEM.

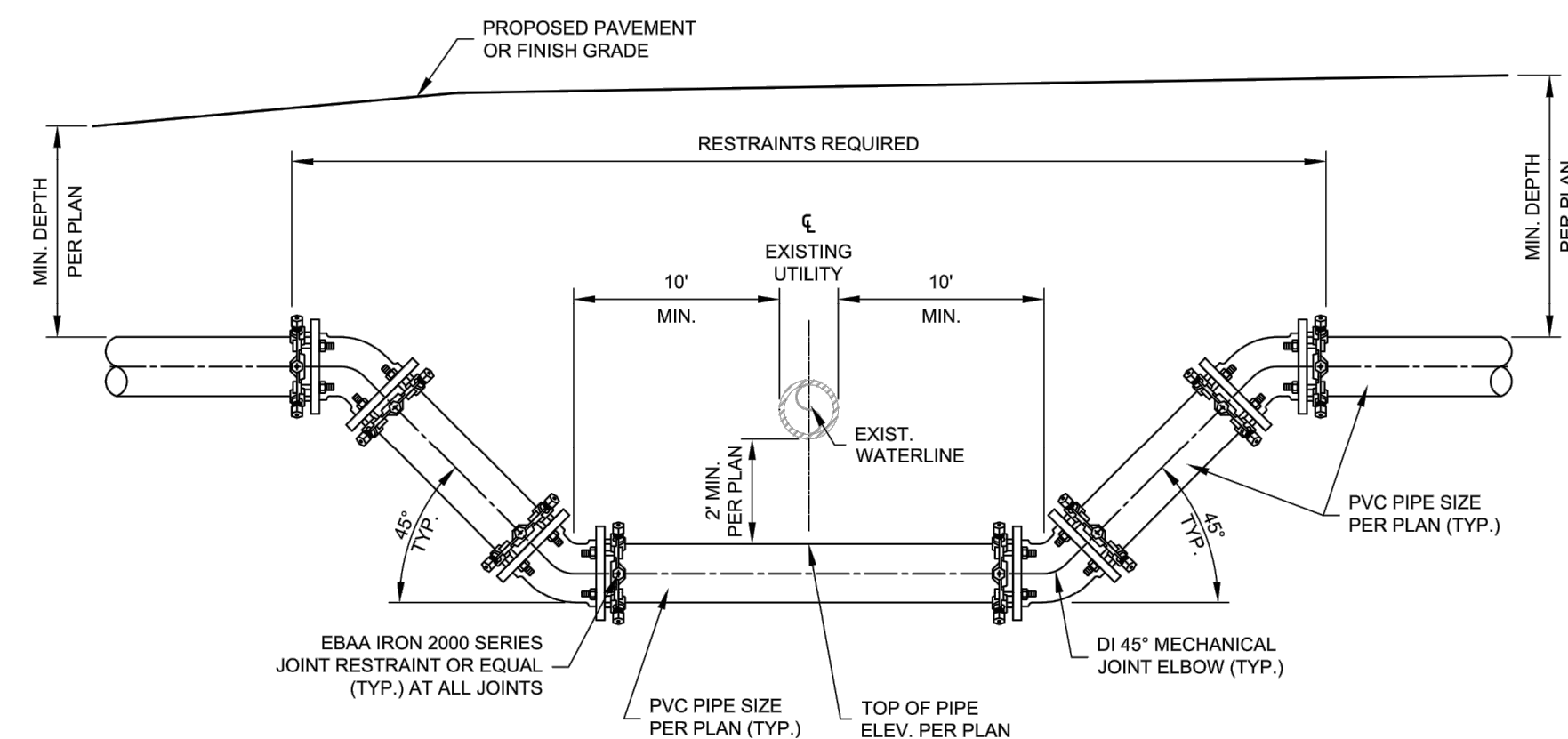
PRESSURIZED WATERLINE (P)



- NOTES:
1. ALL WORK INCLUDING MATERIAL, EXCAVATION, CUTTING & PLUGGING OF EXISTING WATERLINE(S), COMPACTION, AND PAVEMENT REMOVAL AND REPLACEMENT SHALL BE INCIDENTAL TO THE WATERLINE INSTALLATION BID ITEM.

ABANDONED WATERLINE (A)

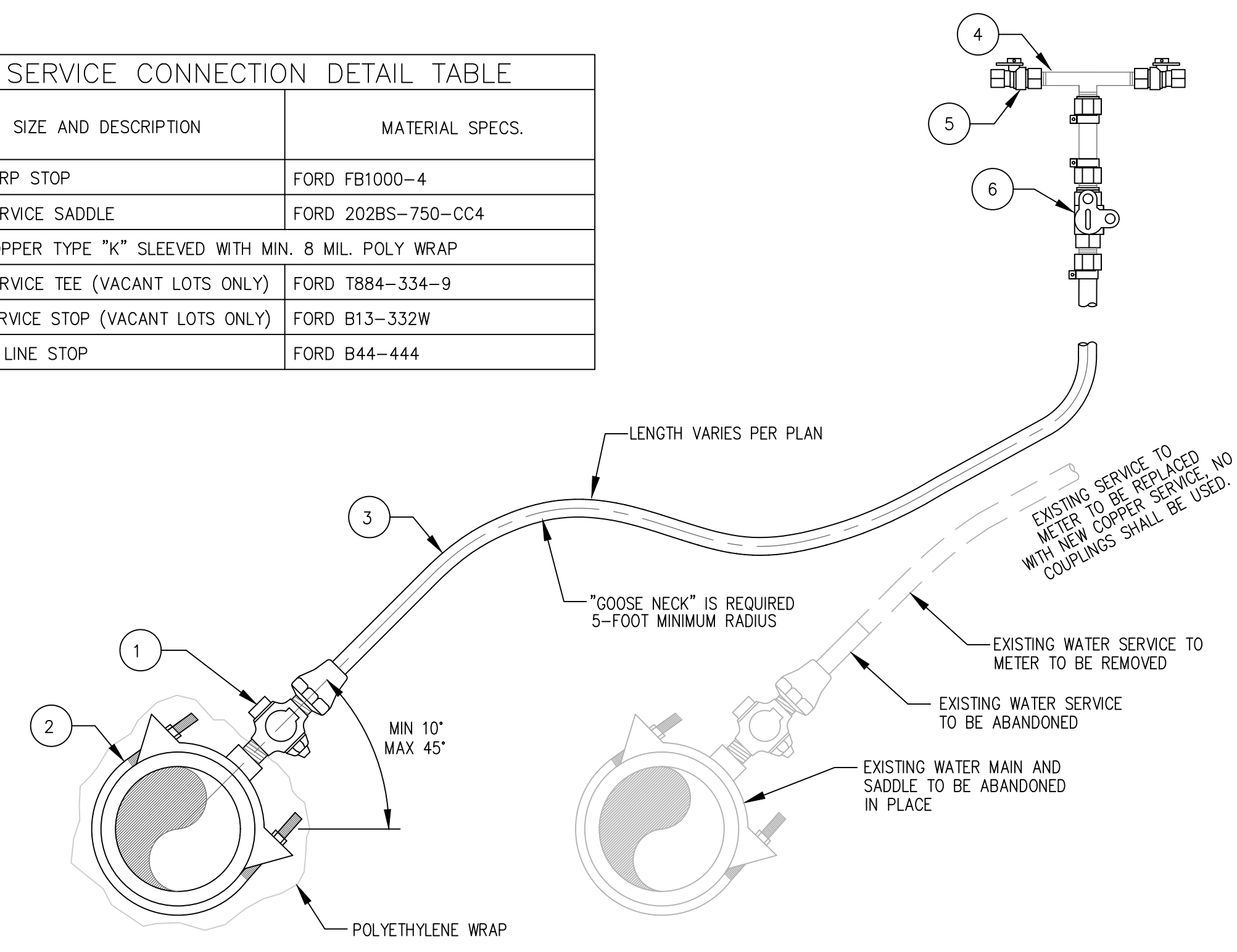
**DETAIL 1
WATERLINE PIPE PLUG**
NOT TO SCALE



- NOTES:
1. CONTRACTOR SHALL FIELD VERIFY WATERLINE LOCATION.
 2. ALL PIPE FITTINGS SHALL BE PVC, SIZE TO MATCH PLANS.
 3. ALL PVC PIPE SHALL BE CONSTRUCTED WITH FLANGE RESTRAINTS.
 4. ELBOWS ONLY REQUIRED IF SHOWN ON PLANS.
 5. S = SIZE IN INCHES.

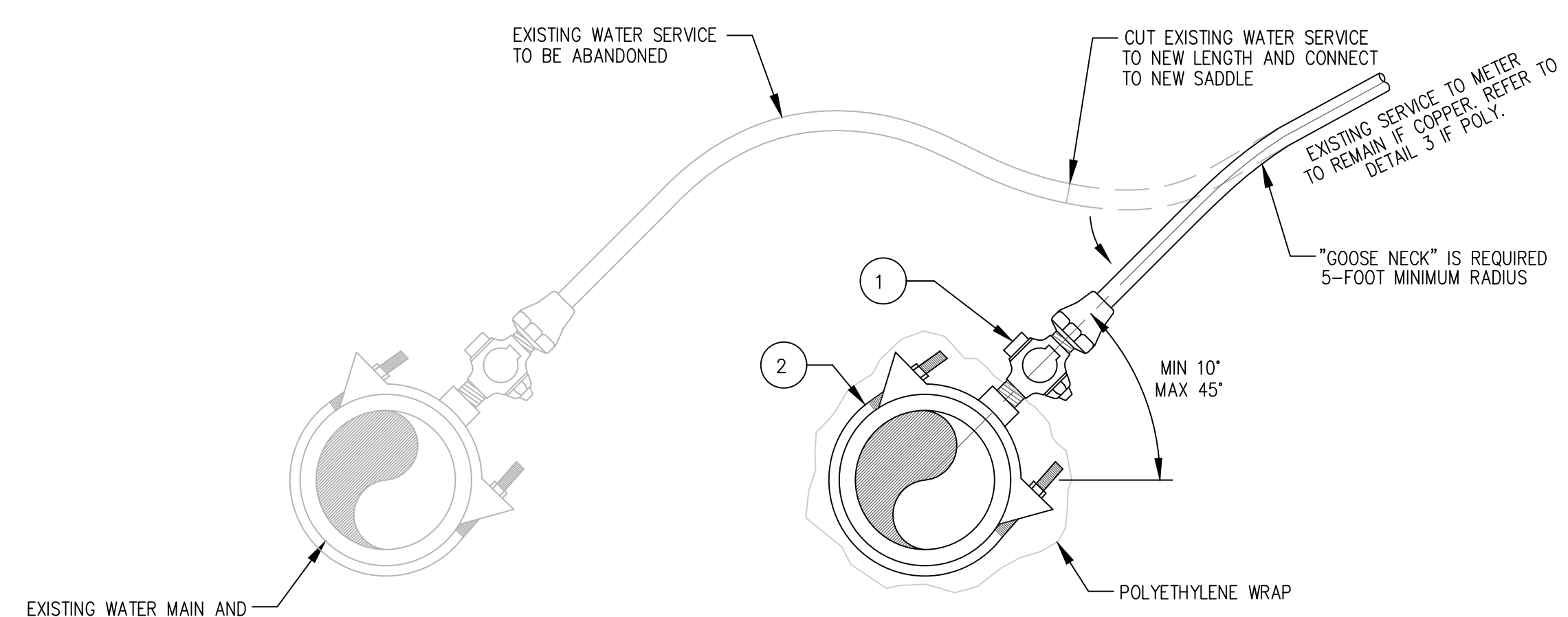
**DETAIL 2
TYPICAL DROP UNDER EXISTING WATERLINE**
NOT TO SCALE

1" SERVICE CONNECTION DETAIL TABLE		
ITEM NO.	SIZE AND DESCRIPTION	MATERIAL SPECS.
1	1" CORP STOP	FORD FB1000-4
2	1" SERVICE SADDLE	FORD 202BS-750-CC4
3	1" COPPER TYPE "K" SLEEVED WITH MIN. 8 MIL. POLY WRAP	
4	1" SERVICE TEE (VACANT LOTS ONLY)	FORD T884-334-9
5	1" SERVICE STOP (VACANT LOTS ONLY)	FORD B13-332W
6	1" IN LINE STOP	FORD B44-444



**DETAIL 3
WATER SERVICE ASSEMBLY**
NOT TO SCALE

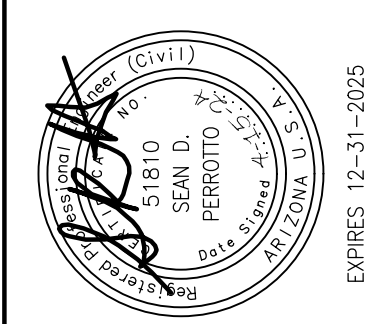
1" SERVICE CONNECTION DETAIL TABLE		
ITEM NO.	SIZE AND DESCRIPTION	MATERIAL SPECS.
1	1" CORP STOP	FORD FB1000-4
2	1" SERVICE SADDLE	FORD 202BS-750-CC4



**DETAIL 4
WATER SERVICE CONNECTION**
NOT TO SCALE

REVISION RECORD

NO	DATE	DESCRIPTION



TRICO ENGINEERING, LLC
 PRESENTS
 SEAN D. PERROTTO
 2330 MCCULLOCH BLVD N.
 LAKE HAVASU CITY, AZ 86403
 (928) 885-2116

2024 WATER MAIN REPLACEMENT PROJECT, PHASE 1
B24-PW-108019-500441
 LAKE HAVASU CITY
 2330 MCCULLOCH BLVD N.
 LAKE HAVASU CITY, AZ 86403
 (928) 885-2116



GENERAL DETAILS III

DATE:	APRIL 15, 2024	DRAWN BY:	JWC/CCP
DWG SCALE:	NTS	CHECKED BY:	EPJ/SPD
PROJECT NO:	23-044	APPROVED BY:	

C:\Trico_Engineering_LLC\Projects\2024\B24-PW-108019-500441_General_Details.dwg 15/4/2024 - enp/epj - LP: 4/15/2024 3:10 PM