



August 2021

Sales, Use and Accommodation Tax Report

The Lake Havasu City Sales, Use and Accommodation Tax Report examines taxes collected during the month of July 2021 by businesses and vendors, which were reported and remitted to the Arizona Department of Revenue in August 2021. Tax collection information is provided by Arizona Department of Revenue.

Sales Tax

Fiscal Year to Date (FYTD) August 2021 sales tax collections are 42.9% above budget and 16.7% above prior year. The month of August is 16.7% above prior year.

Fiscal YTD vs. Budget

Current Year Actual 2022 FYTD	Budget 2022 FYTD	% Increase/Decrease over Budget
\$ 3,329,778	\$ 2,330,659	42.9%

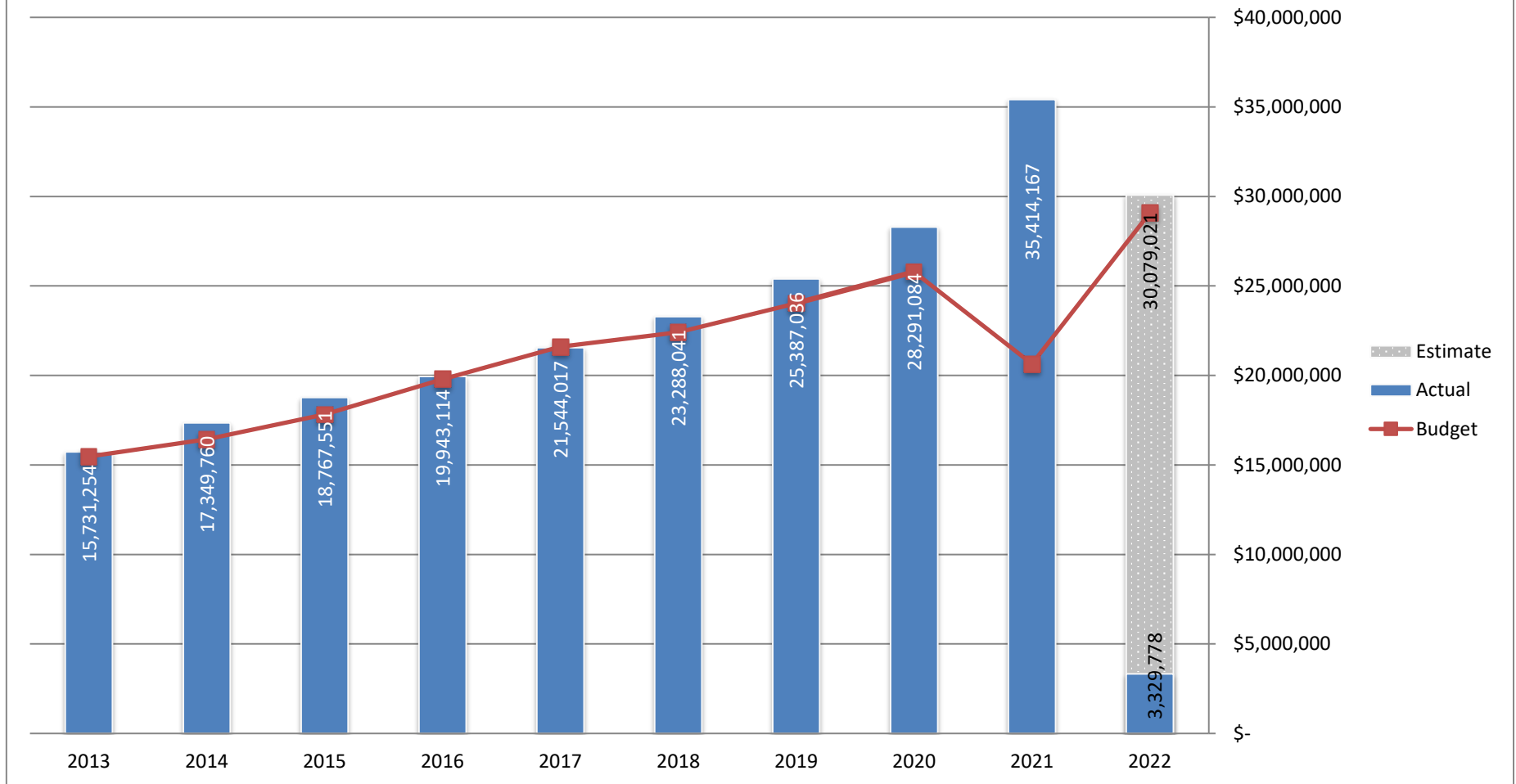
Fiscal YTD vs. Prior Fiscal YTD

Current Year Actual 2022 FYTD	Prior Year Actual 2021 FYTD	% Increase/Decrease over Prior FYTD
\$ 3,329,778	\$ 2,854,152	16.7%

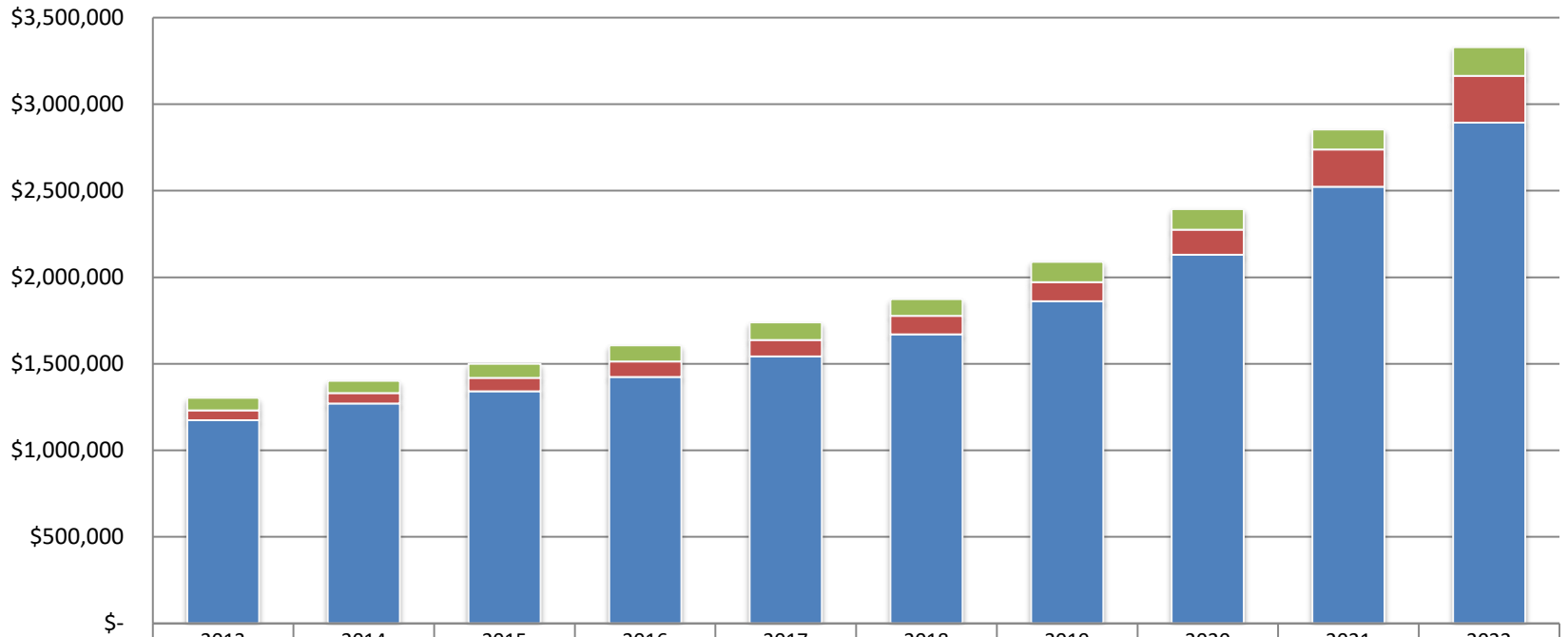
Month vs. Month Prior Year

August 2021	August 2020	% Increase/Decrease over Prior Year
\$ 3,329,778	\$ 2,854,152	16.7%

Lake Havasu City Sales Tax Revenue by Fiscal Year 2021-2022

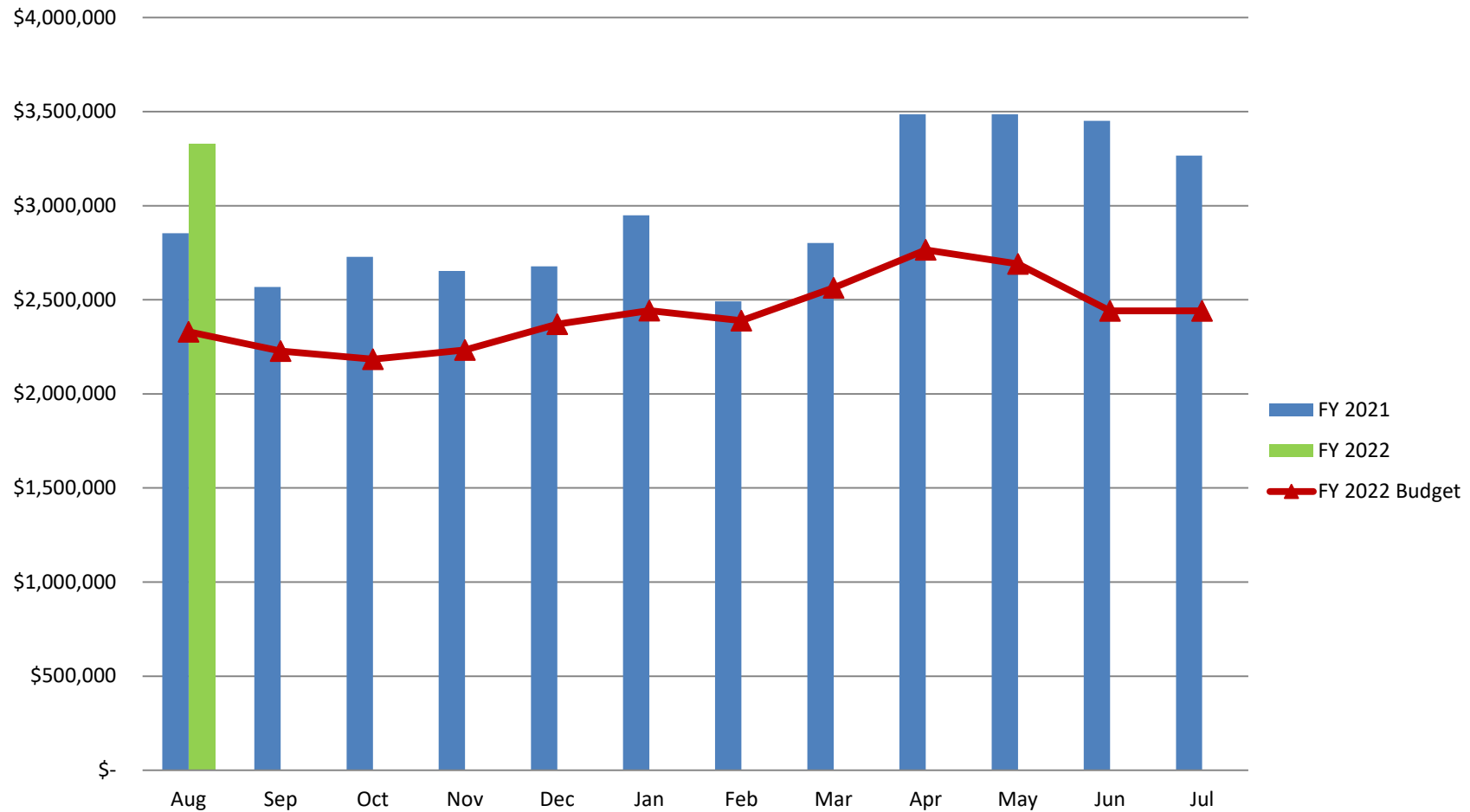


Lake Havasu City Total Tax Collected - Fiscal Year to Date



	2013	2014	2015	2016	2017	2018	2019	2020	2021	2022
■ Restaurant & Bar Add'l 1%	72,353	71,339	80,945	93,073	101,818	97,339	116,239	119,030	116,002	165,517
■ Hotel/Motel Add'l 3%	56,422	59,972	77,378	88,171	94,515	106,643	110,738	143,963	214,763	271,398
■ 2% City Sales Tax Collected	1,174,688	1,270,793	1,340,654	1,424,682	1,542,436	1,669,992	1,861,717	2,130,735	2,523,387	2,892,863

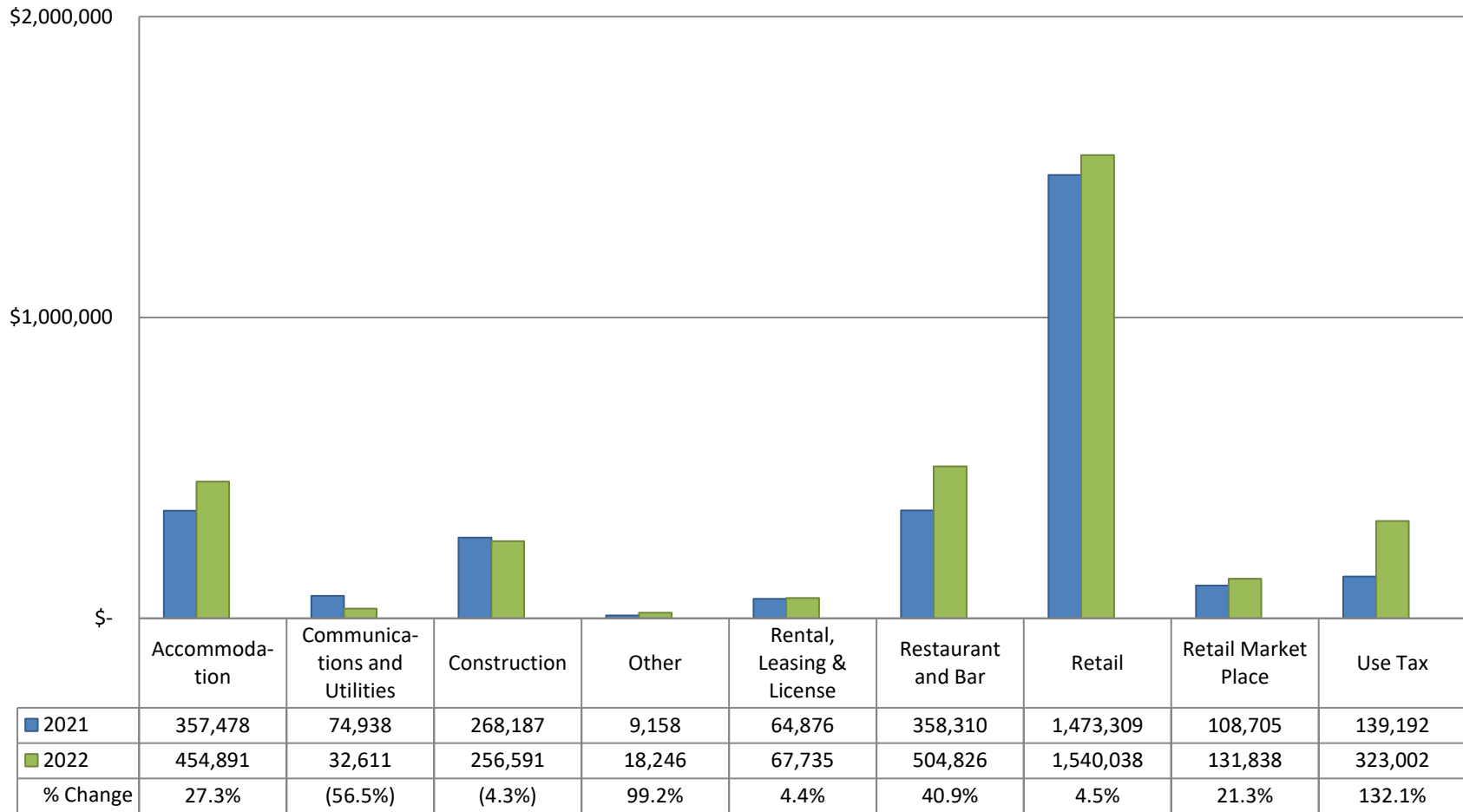
Lake Havasu City Total Sales Tax by Month Fiscal Year 2021 versus 2022



Lake Havasu City

Sales Tax Collections by Industry

FYTD 2021 vs. FYTD 2022



Retail Sales

August retail sales tax collections have Increased by \$89,861 or 5.7% compared to the same period last year. Fiscal Year to Date collections are 16.7 % higher than last year. The largest growth is in Retail Stores

Month vs. Month Prior Year

Month	FY 2022	FY 2021	% Increase/Decrease over Prior Year
August	\$ 1,671,876	\$ 1,582,014	5.7%

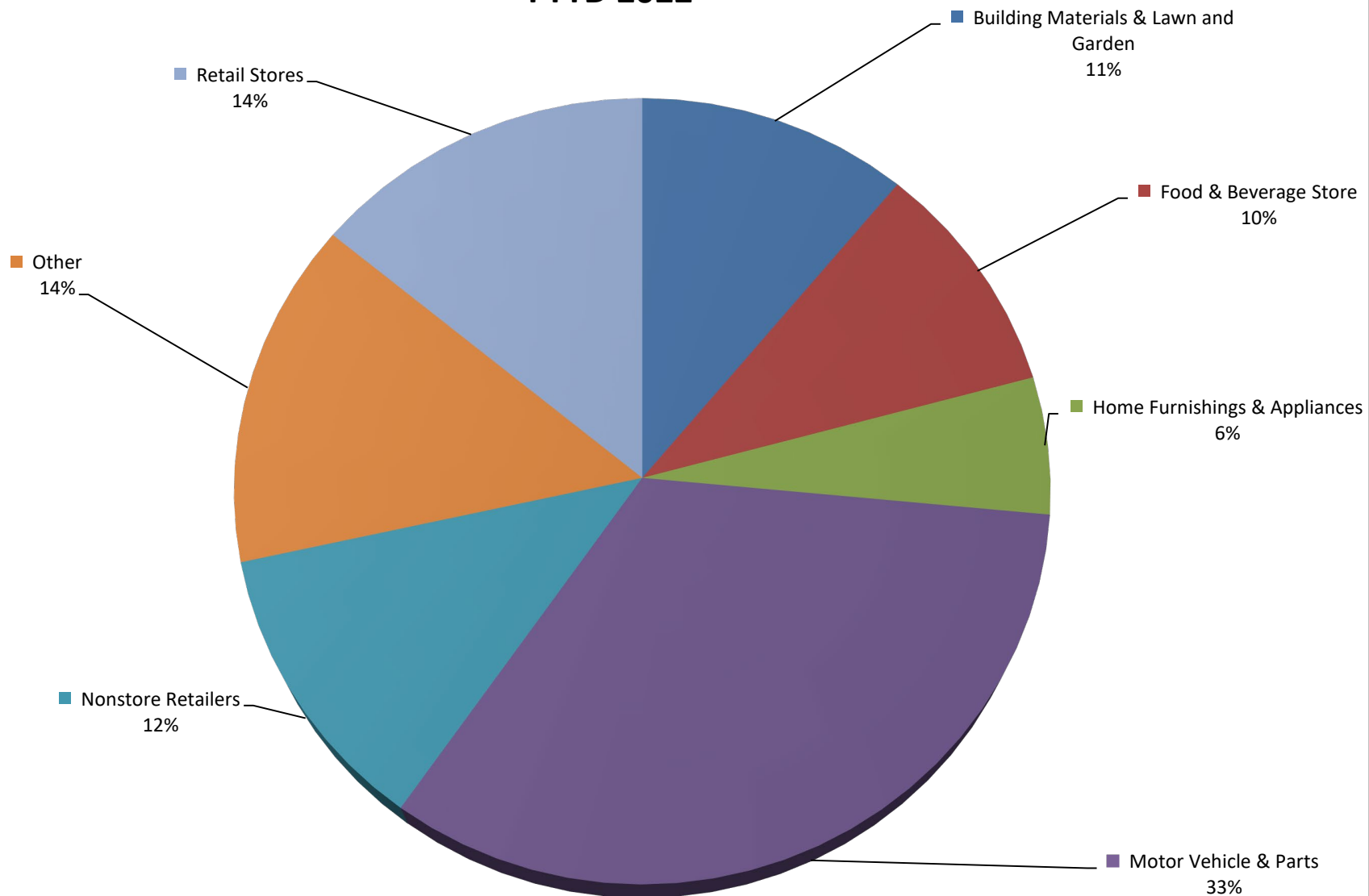
Fiscal YTD vs. Prior Fiscal YTD

2022 FYTD	2021 FYTD	% Increase/Decrease over Prior FYTD
\$ 1,671,876	\$ 1,582,014	5.7%

Month vs. Month Prior Year Retail Sales Categories

Retail Trade Categories	August 2021	August 2020	Change %
Building Materials & Lawn and Garden	\$ 185,338	\$ 170,509	8.7%
Food & Beverage Store	\$ 163,075	\$ 167,352	-2.6%
Home Furnishings & Appliances	\$ 94,444	\$ 71,508	32.1%
Motor Vehicle & Parts	\$ 556,349	\$ 519,931	7.0%
Non-Store Retailers	\$ 197,424	\$ 181,650	8.7%
Other	\$ 239,445	\$ 269,027	-11.0%
Retail Stores	\$ 235,801	\$ 202,036	16.7%
Total	\$ 1,671,876	\$ 1,582,014	5.7%

Retail Sales by Category FYTD 2022



Accommodations and Restaurant & Bar

Lake Havasu City collects an additional tax on accommodations (3%) and restaurant & bar sales (1%). The revenues generated by these additional taxes support tourism and economic development. The Partnership of Economic Development (PED) receives \$500,000 annually and the Convention & Visitor's Bureau (Go Lake Havasu) receives \$1.6 million annually.

Month vs. Month Prior Year

Tax Type	August 2021	August 2020	% Increase/Decrease over Prior Year
Restaurant & Bar Additional 1%	\$ 165,517	\$ 116,002	42.7%
Hotel/Motel Additional 3%	\$ 271,398	\$ 214,763	26.4%
2% City Sales Tax Collected	\$ 2,892,863	\$ 2,523,387	14.6%

Fiscal YTD vs. Prior Fiscal YTD

Tax Type	2022 FYTD	2021 FYTD	% Increase/Decrease over Prior Year
Restaurant & Bar Additional 1%	\$ 165,517	\$ 116,002	42.7%
Hotel/Motel Additional 3%	\$ 271,398	\$ 214,763	26.4%
2% City Sales Tax Collected	\$ 2,892,863	\$ 2,523,387	14.6%