



February 2021

Sales, Use and Accommodation Tax Report

The Lake Havasu City Sales, Use and Accommodation Tax Report examines taxes collected during the month of January 2021 by businesses and vendors, which were reported and remitted to the Arizona Department of Revenue in February 2021. Tax collection information is provided by Arizona Department of Revenue.

Sales Tax

Fiscal Year to Date (FYTD) February 2021 sales tax collections are 62.6% above budget and 22% above prior year. The month of February is 22.7% above prior year.

Fiscal YTD vs. Budget

Current Year Actual 2021 FYTD	Budget 2021 FYTD	% Increase/Decrease over Budget
\$ 18,923,692	\$ 11,633,043	62.7%

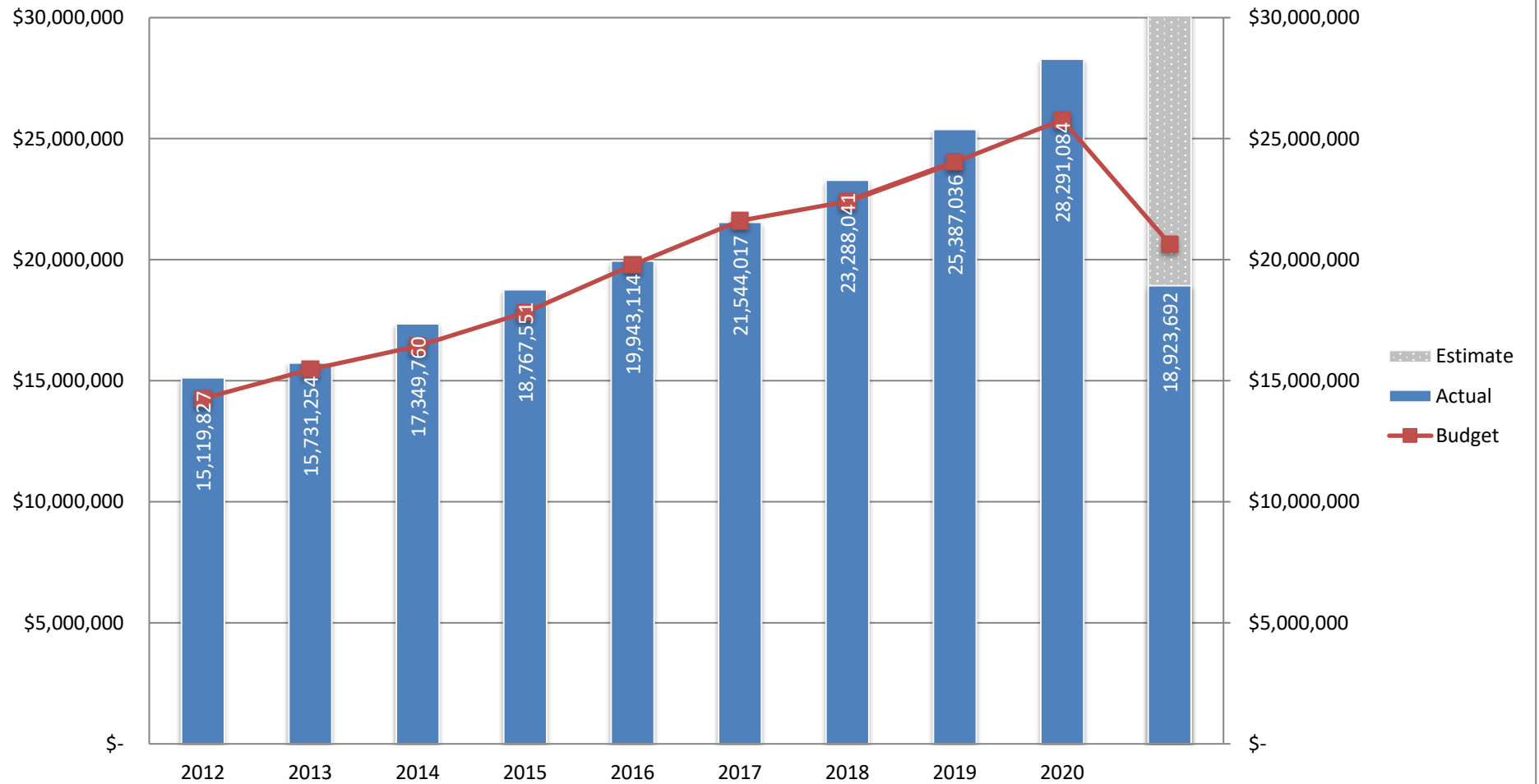
Fiscal YTD vs. Prior Fiscal YTD

Current Year Actual 2021 FYTD	Prior Year Actual 2020 FYTD	% Increase/Decrease over Prior FYTD
\$ 18,923,692	\$ 15,499,099	22.1%

Month vs. Month Prior Year

February 2021	February 2020	% Increase/Decrease over Prior Year
\$ 2,491,071	\$ 2,277,884	9.4%

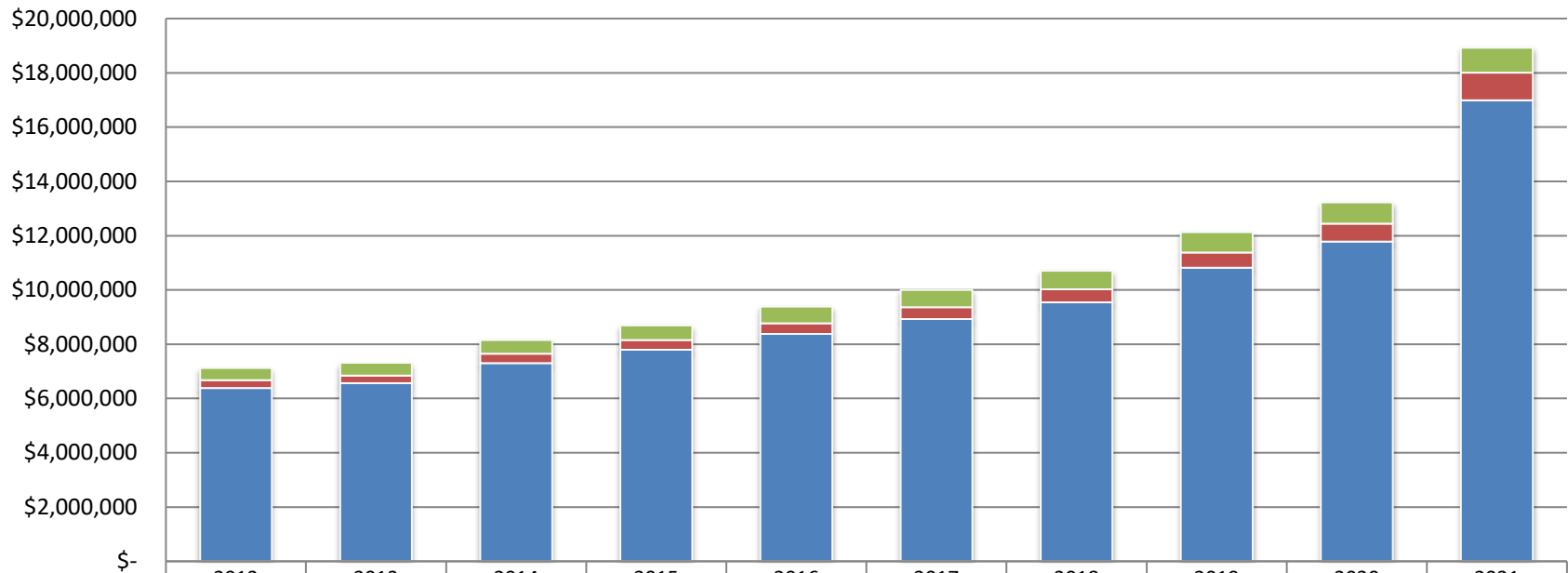
Lake Havasu City Sales Tax Revenue by Fiscal Year 2020-2021



Lake Havasu City

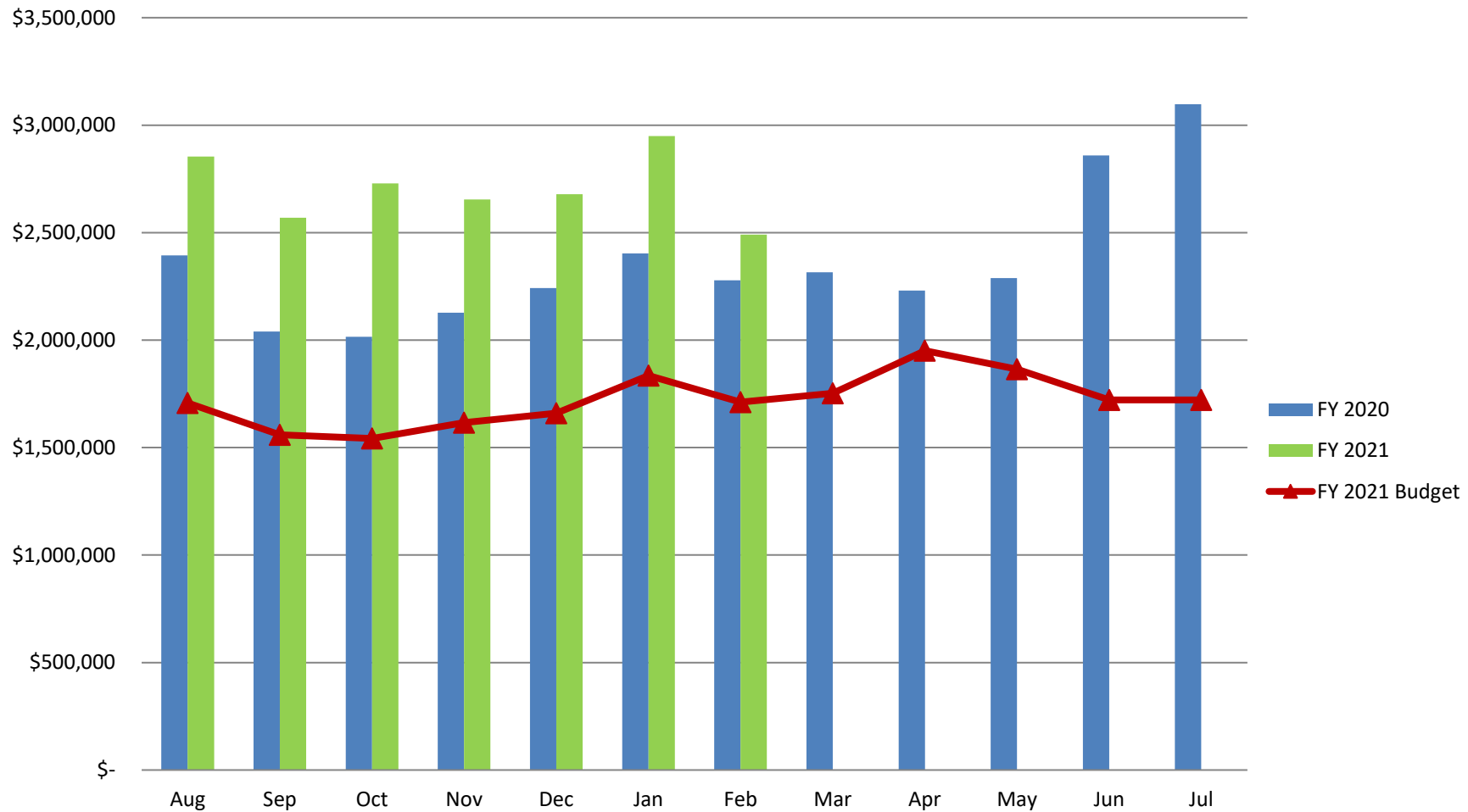
Total Tax Collected - Fiscal Year to Date

February 2021

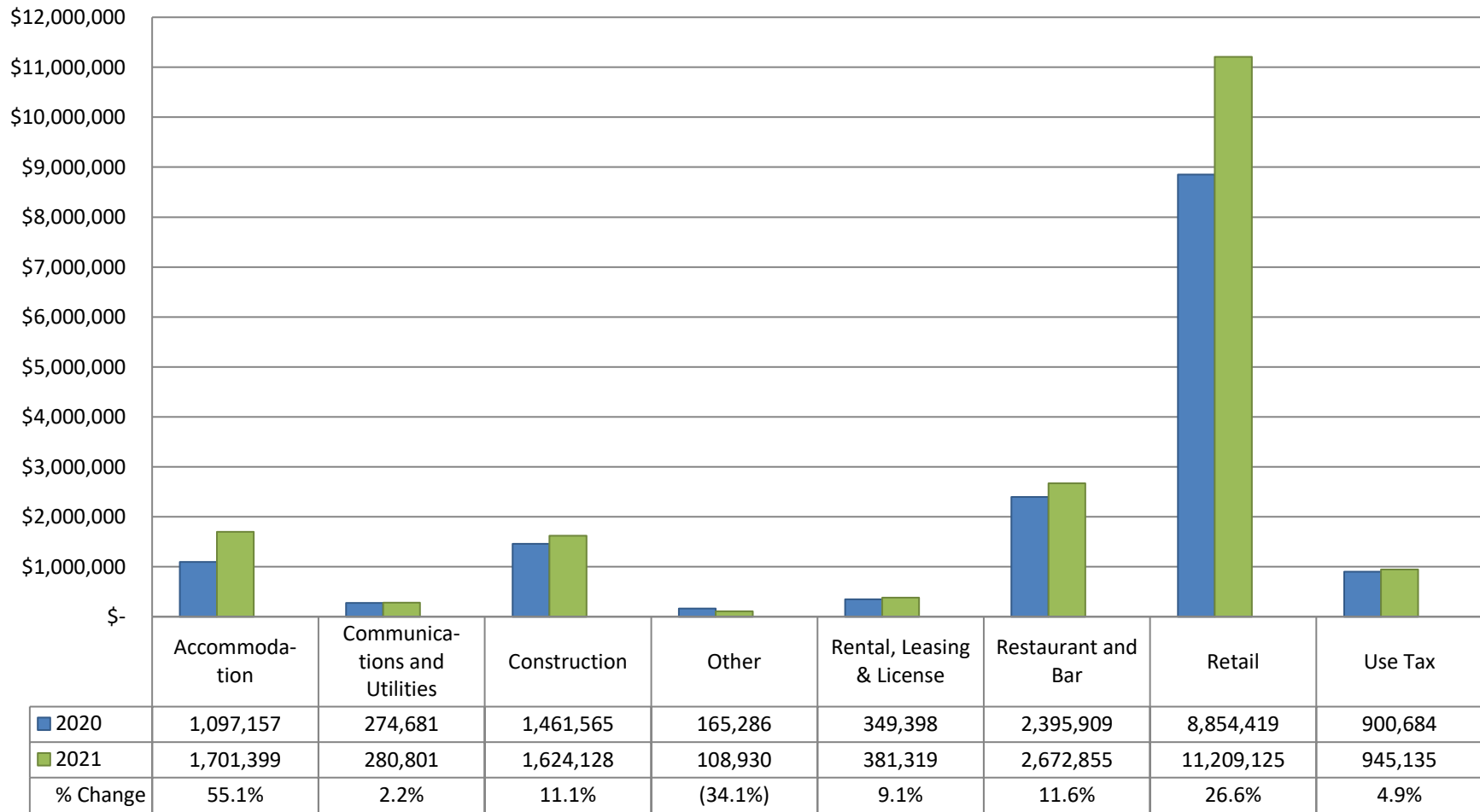


	2012	2013	2014	2015	2016	2017	2018	2019	2020	2021
■ Restaurant & Bar Add'l 1%	445,838	472,092	506,991	546,794	611,297	643,250	680,241	746,363	778,205	914,596
■ Hotel/Motel Add'l 3%	291,721	283,500	347,460	355,887	390,094	439,107	483,302	557,641	655,667	1,018,061
■ 2% City Sales Tax Collected	6,386,627	6,560,312	7,303,809	7,793,619	8,383,082	8,921,822	9,542,520	10,819,937	11,787,343	16,991,034

Lake Havasu City Total Sales Tax by Month Fiscal Year 2020 versus 2021



Lake Havasu City **Sales Tax Collections by Industry** **FYTD 2020 vs. FYTD 2021**



Retail Sales

February retail sales tax collections have Increased by \$402,312 or 26.3% compared to the same period last year. Fiscal Year to Date collections are 27.8% higher than last year. Note that the Wayfair case - requiring out-of-state online retailers to remit Arizona TPT taxes went into effect 10-1-2019.

Month vs. Month Prior Year

Month	FY 2021	FY 2020	% Increase/Decrease over Prior Year
February	\$ 1,929,190	\$ 1,526,878	26.3%

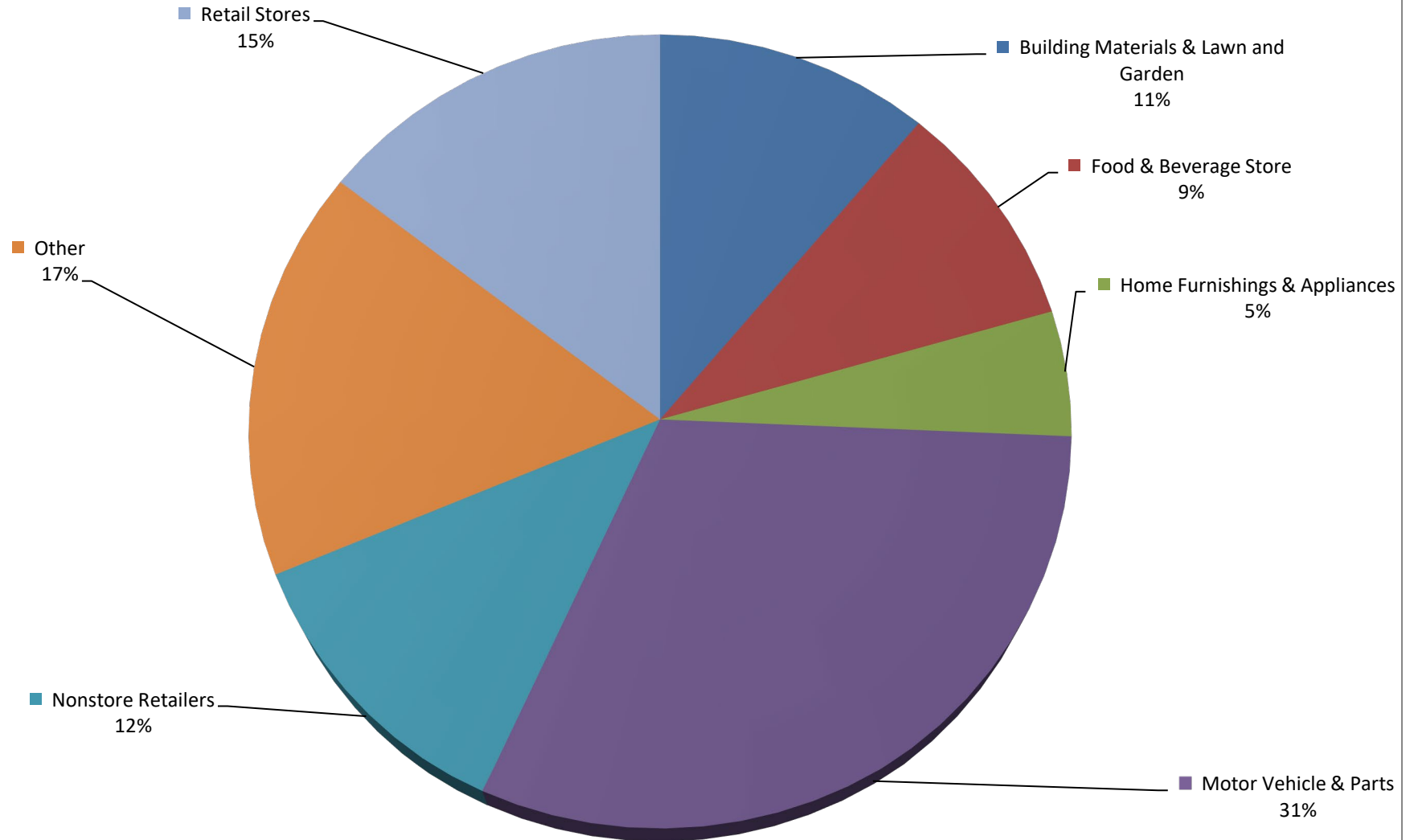
Fiscal YTD vs. Prior Fiscal YTD

2021 FYTD	2020 FYTD	% Increase/Decrease over Prior FYTD
\$ 11,209,125	\$ 8,854,419	26.6%

Month vs. Month Prior Year Retail Sales Categories

Retail Trade Categories	February 2021	February 2020	Change %
Building Materials & Lawn and Garden	\$ 181,371	\$ 158,525	14.4%
Food & Beverage Store	\$ 190,865	\$ 157,631	21.1%
Home Furnishings & Appliances	\$ 90,861	\$ 76,814	18.3%
Motor Vehicle & Parts	\$ 556,536	\$ 342,677	62.4%
Non-Store Retailers	\$ 281,460	\$ 217,799	29.2%
Other	\$ 290,778	\$ 224,765	29.4%
Retail Stores	\$ 337,320	\$ 348,668	-3.3%
Total	\$ 1,929,190	\$ 1,526,878	26.3%

Retail Sales by Category FYTD February 2021



Accommodations and Restaurant & Bar

Lake Havasu City collects an additional tax on accommodations (3%) and restaurant & bar sales (1%). The revenues generated by these additional taxes support tourism and economic development. The Partnership of Economic Development (PED) receives \$500,000 annually and the Convention & Visitor's Bureau (CVB) receives 75% of the taxes. Year to Date payments to the CVB is \$1,262,039.

Month vs. Month Prior Year

Tax Type	February 2021	February 2020	% Increase/Decrease over Prior Year
Restaurant & Bar Additional 1%	\$ 121,588	\$ 116,772	4.1%
Hotel/Motel Additional 3%	\$ 113,212	\$ 87,227	29.8%
2% City Sales Tax Collected	\$ 2,256,271	\$ 2,073,885	8.8%

Fiscal YTD vs. Prior Fiscal YTD

Tax Type	2021 FYTD	2020 FYTD	% Increase/Decrease over Prior Year
Restaurant & Bar Additional 1%	\$ 914,596	\$ 778,205	17.5%
Hotel/Motel Additional 3%	\$ 1,018,061	\$ 655,667	55.3%
2% City Sales Tax Collected	\$ 16,991,034	\$ 11,787,343	44.1%