



May 2021

Sales, Use and Accommodation Tax Report

The Lake Havasu City Sales, Use and Accommodation Tax Report examines taxes collected during the month of April 2021 by businesses and vendors, which were reported and remitted to the Arizona Department of Revenue in May 2021. Tax collection information is provided by Arizona Department of Revenue.

Sales Tax

Fiscal Year to Date (FYTD) May 2021 sales tax collections are 66.8% above budget and 28.5% above prior year. The month of May is 52.3% above prior year.

Fiscal YTD vs. Budget

Current Year Actual 2021 FYTD	Budget 2021 FYTD	% Increase/Decrease over Budget
\$ 28,697,069	\$ 17,201,342	66.8%

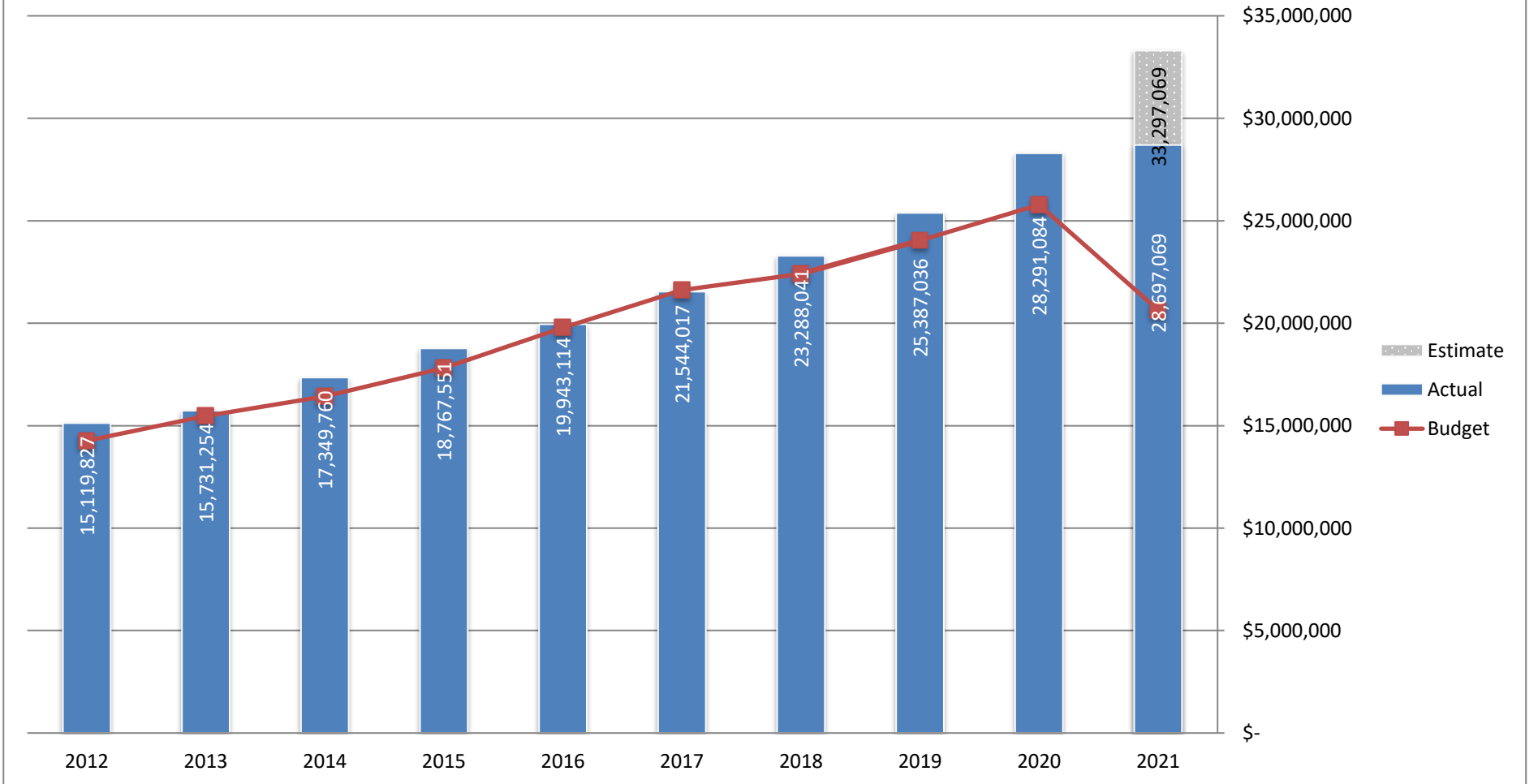
Fiscal YTD vs. Prior Fiscal YTD

Current Year Actual 2021 FYTD	Prior Year Actual 2020 FYTD	% Increase/Decrease over Prior FYTD
\$ 28,697,069	\$ 22,334,515	28.5%

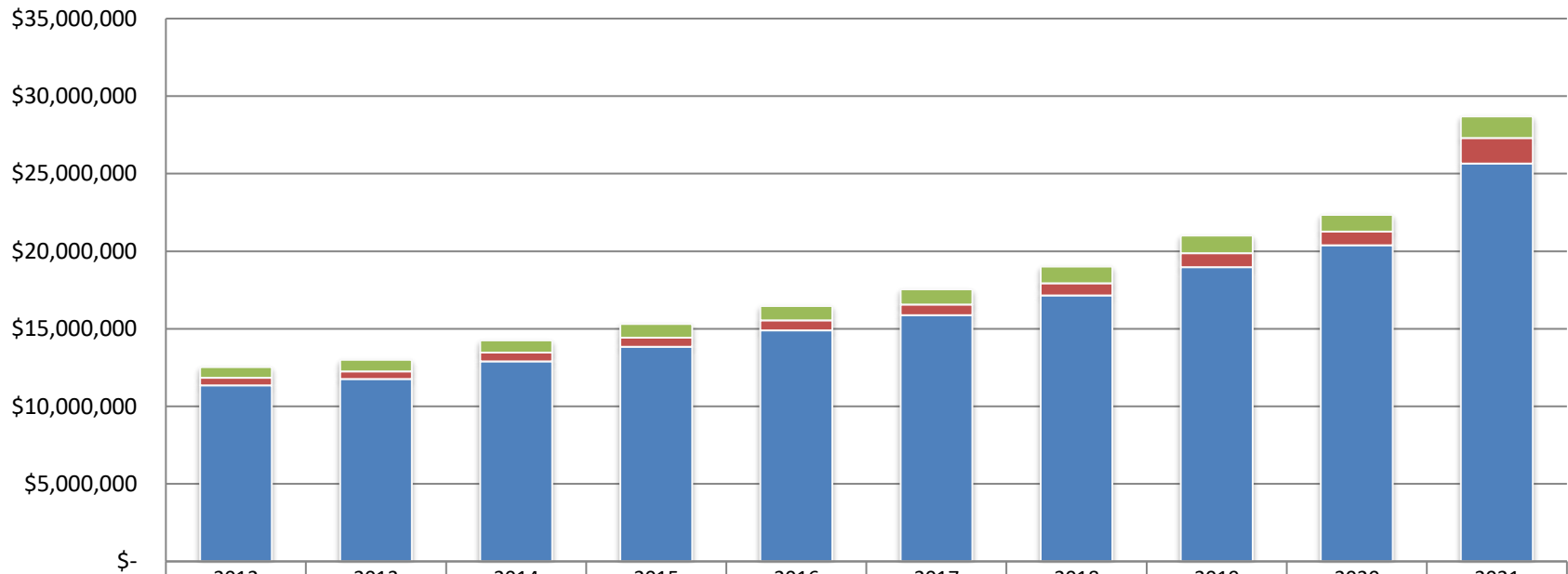
Month vs. Month Prior Year

May 2021	May 2020	% Increase/Decrease over Prior Year
\$ 3,485,138	\$ 2,288,116	52.3%

Lake Havasu City Sales Tax Revenue by Fiscal Year 2020-2021

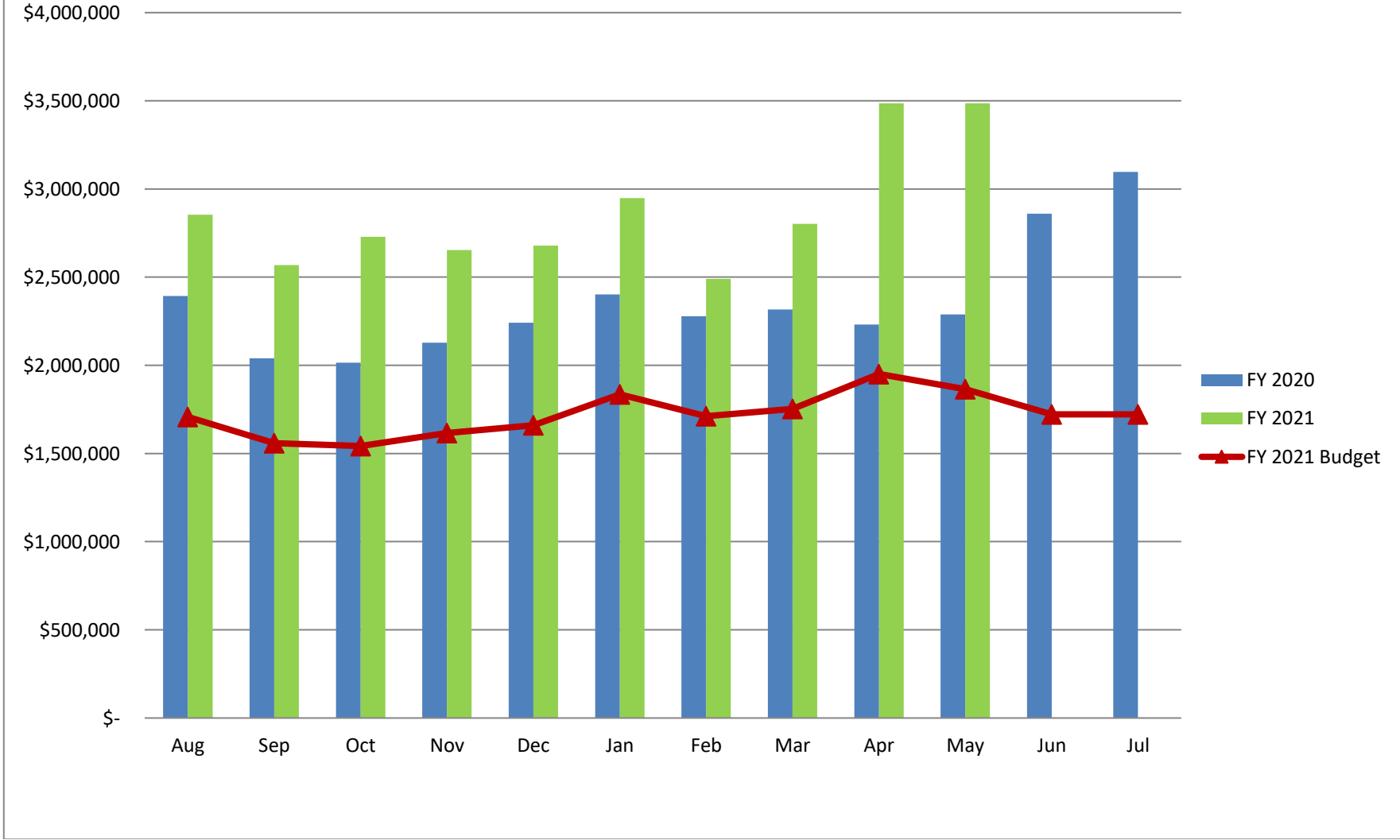


Lake Havasu City Total Tax Collected - Fiscal Year to Date May 2021

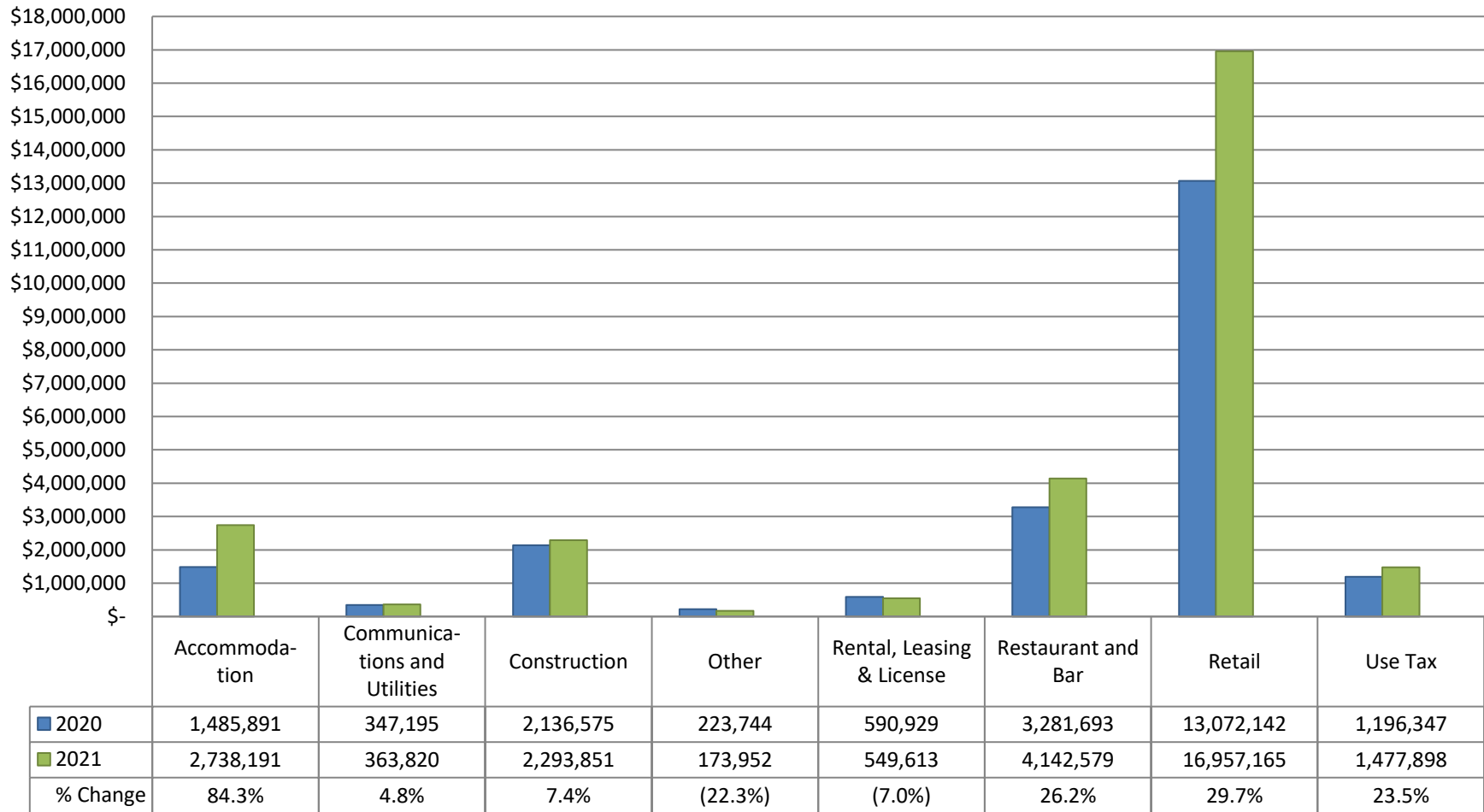


	2012	2013	2014	2015	2016	2017	2018	2019	2020	2021
■ Restaurant & Bar Add'l 1%	685,763	733,582	777,172	868,643	922,720	975,786	1,084,625	1,138,167	1,065,922	1,397,718
■ Hotel/Motel Add'l 3%	477,622	496,943	571,277	591,783	630,637	694,971	778,527	891,181	887,610	1,636,910
■ 2% City Sales Tax Collected	11,357,649	11,761,528	12,903,587	13,842,031	14,906,349	15,868,784	17,151,735	18,973,075	20,380,983	25,662,440

Lake Havasu City Total Sales Tax by Month Fiscal Year 2020 versus 2021



Lake Havasu City Sales Tax Collections by Industry FYTD 2020 vs. FYTD 2021



Retail Sales

May retail sales tax collections have increased by \$577,570 or 40.5% compared to the same period last year. Fiscal Year to Date collections are 29.7% higher than last year. The largest growth is in motor vehicles and home furnishings.

Month vs. Month Prior Year

Month	FY 2021	FY 2020	% Increase/Decrease over Prior Year
May	\$ 2,005,037	\$ 1,427,467	40.5%

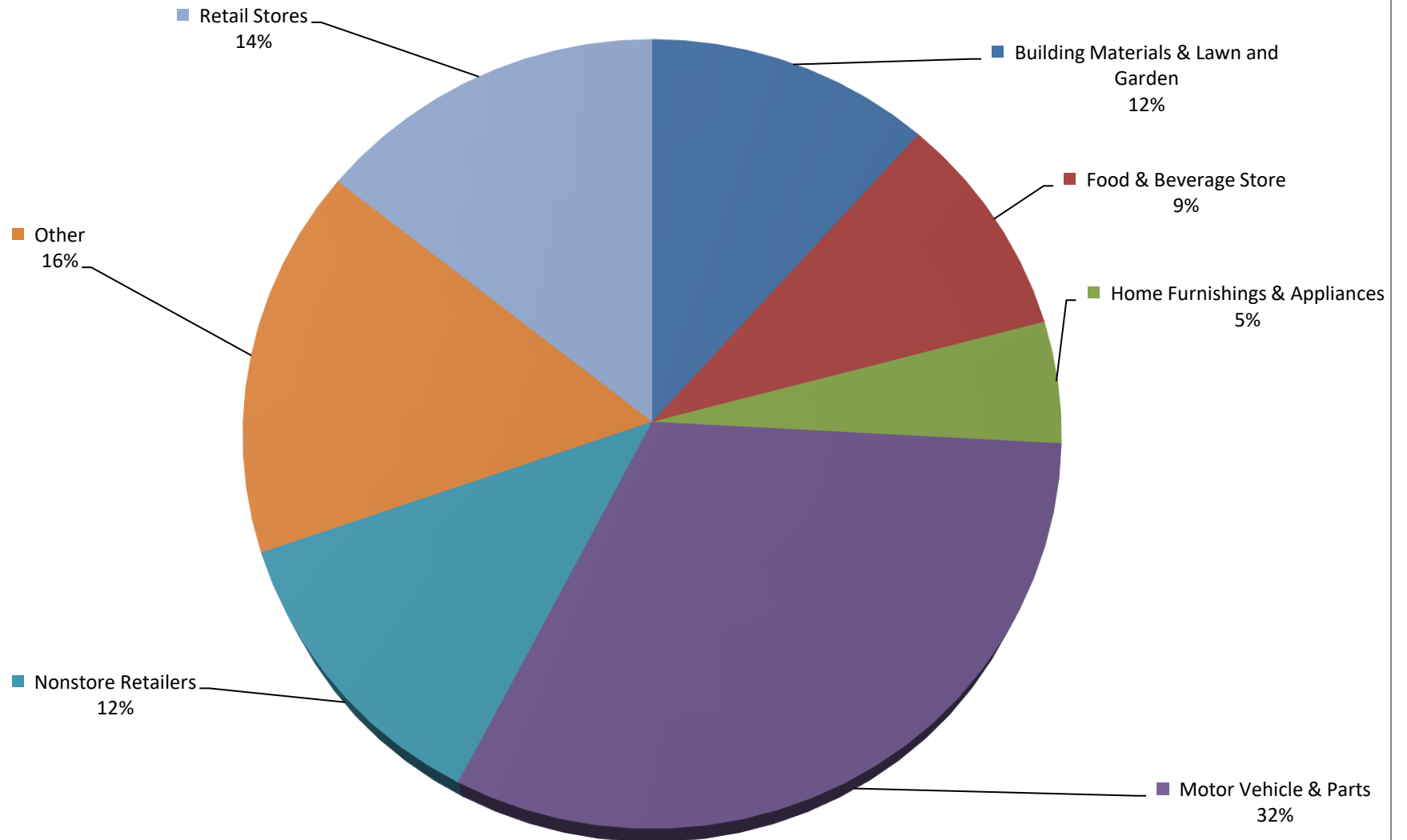
Fiscal YTD vs. Prior Fiscal YTD

2021 FYTD	2020 FYTD	% Increase/Decrease over Prior FYTD
\$ 16,957,165	\$ 13,072,142	29.7%

Month vs. Month Prior Year Retail Sales Categories

Retail Trade Categories	May 2021	May 2020	Change %
Building Materials & Lawn and Garden	\$ 251,491	\$ 211,993	18.6%
Food & Beverage Store	\$ 168,591	\$ 150,690	11.9%
Home Furnishings & Appliances	\$ 96,468	\$ 55,752	73.0%
Motor Vehicle & Parts	\$ 666,136	\$ 370,426	79.8%
Non-Store Retailers	\$ 248,643	\$ 185,440	34.1%
Other	\$ 148,014	\$ 90,856	62.9%
Retail Stores	\$ 271,077	\$ 174,209	55.6%
Total	\$ 1,850,419	\$ 1,239,366	49.3%

Retail Sales by Category FYTD May 2021



Accommodations and Restaurant & Bar

Lake Havasu City collects an additional tax on accommodations (3%) and restaurant & bar sales (1%). The revenues generated by these additional taxes support tourism and economic development. The Partnership of Economic Development (PED) receives \$500,000 annually and the Convention & Visitor's Bureau (Go Lake Havasu) receives \$1.6 million annually.

Month vs. Month Prior Year

Tax Type	May 2021	May 2020	% Increase/Decrease over Prior Year
Restaurant & Bar Additional 1%	\$ 176,265	\$ 70,982	148.3%
Hotel/Motel Additional 3%	\$ 254,036	\$ 64,470	294.0%
2% City Sales Tax Collected	\$ 3,054,838	\$ 2,152,664	41.9%

Fiscal YTD vs. Prior Fiscal YTD

Tax Type	2021 FYTD	2020 FYTD	% Increase/Decrease over Prior Year
Restaurant & Bar Additional 1%	\$ 1,397,718	\$ 1,065,922	31.1%
Hotel/Motel Additional 3%	\$ 1,636,910	\$ 887,610	84.4%
2% City Sales Tax Collected	\$ 25,662,440	\$ 20,380,983	25.9%