



October 2021

Sales, Use and Accommodation Tax Report

The Lake Havasu City Sales, Use and Accommodation Tax Report examines taxes collected during the month of September 2021 by businesses and vendors, which were reported and remitted to the Arizona Department of Revenue in October 2021. Tax collection information is provided by Arizona Department of Revenue.

Sales Tax

Fiscal Year to Date (FYTD) October 2021 sales tax collections are 34.2% above budget and 11% above prior year. The month of October is 8.2% above prior year.

Fiscal YTD vs. Budget

Current Year Actual 2022 FYTD	Budget 2022 FYTD	% Increase/Decrease over Budget
\$ 9,046,314	\$ 6,742,552	34.2%

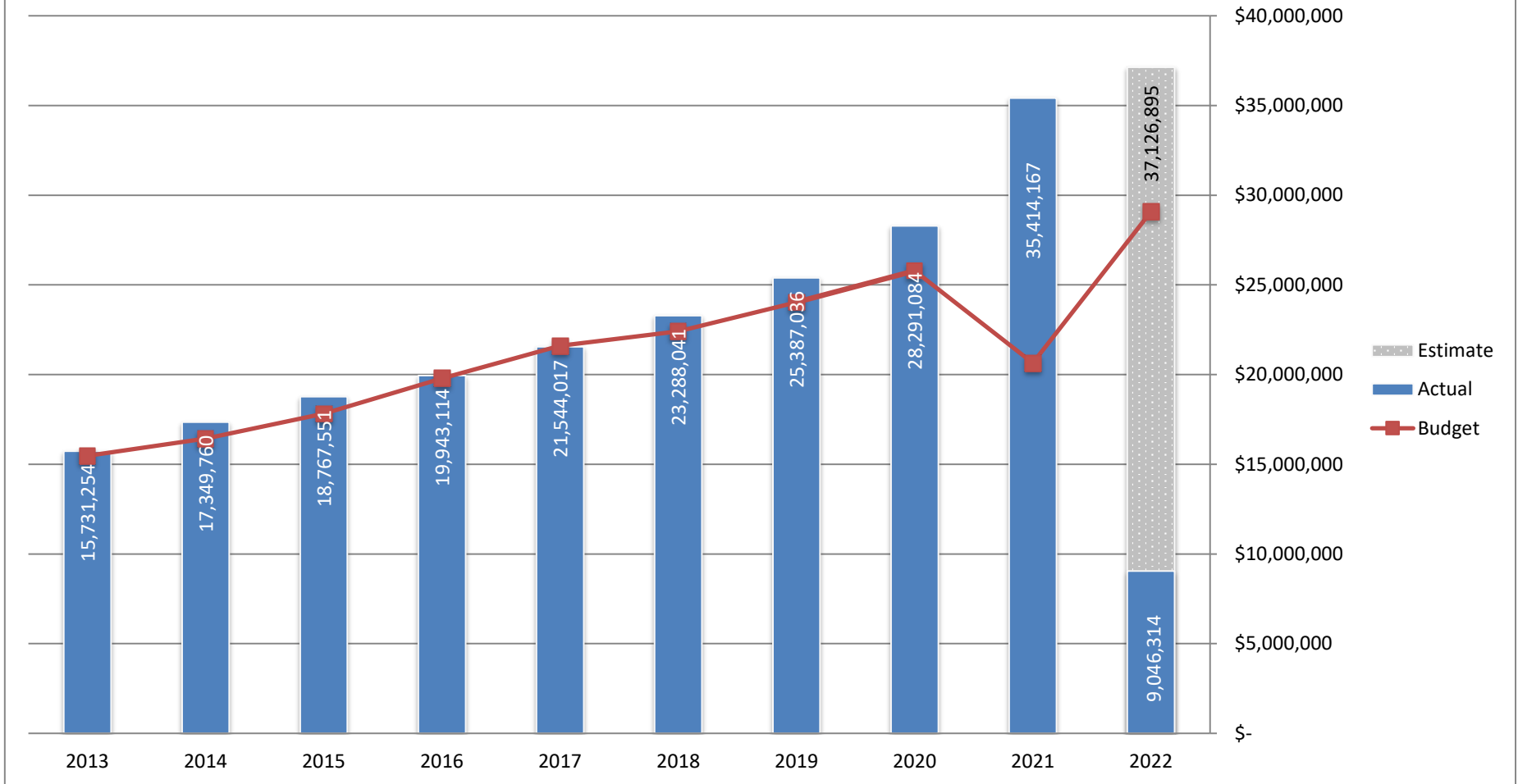
Fiscal YTD vs. Prior Fiscal YTD

Current Year Actual 2022 FYTD	Prior Year Actual 2021 FYTD	% Increase/Decrease over Prior FYTD
\$ 9,046,314	\$ 8,151,467	11.0%

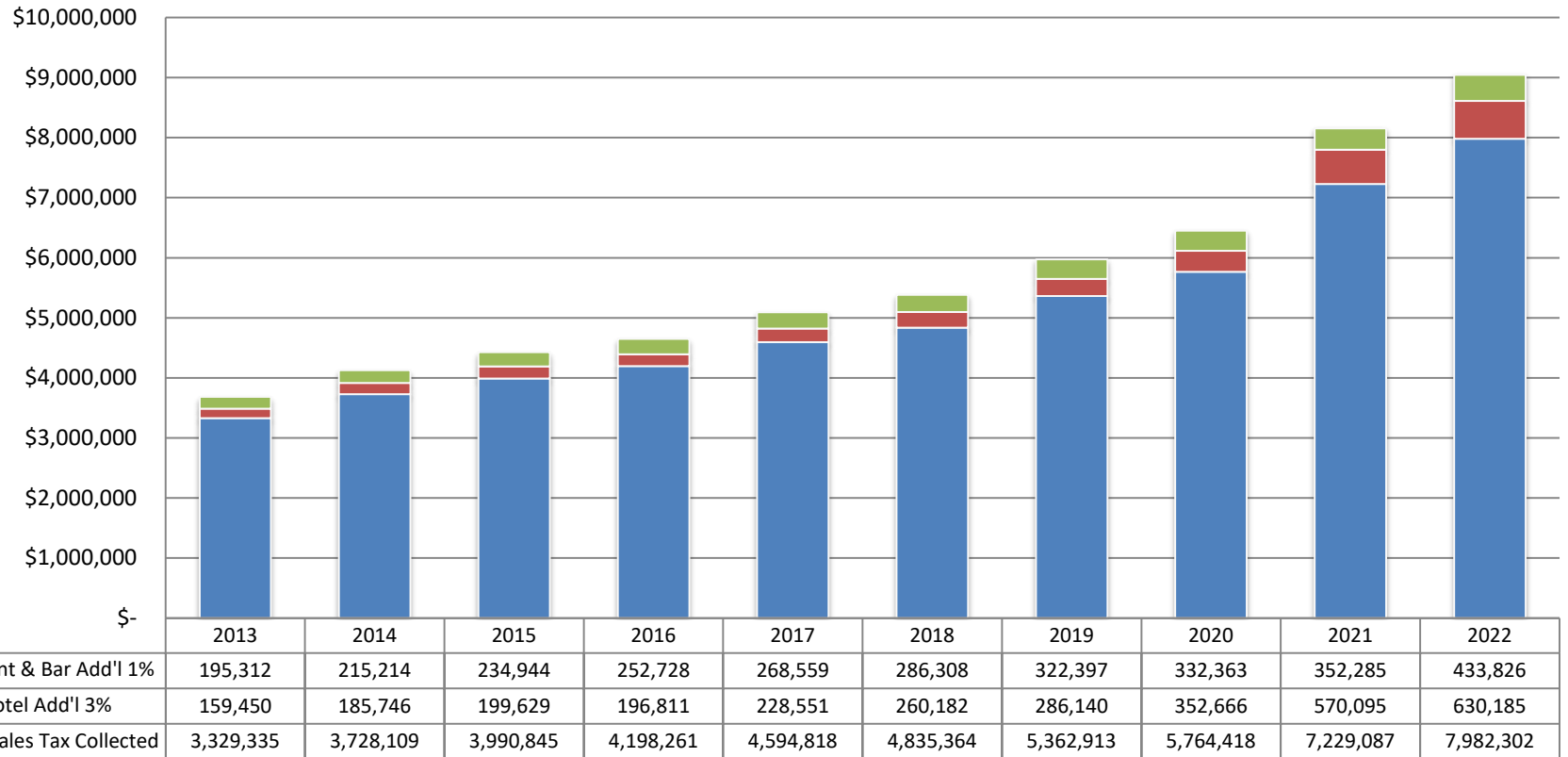
Month vs. Month Prior Year

October 2021	October 2020	% Increase/Decrease over Prior Year
\$ 2,951,851	\$ 2,728,519	8.2%

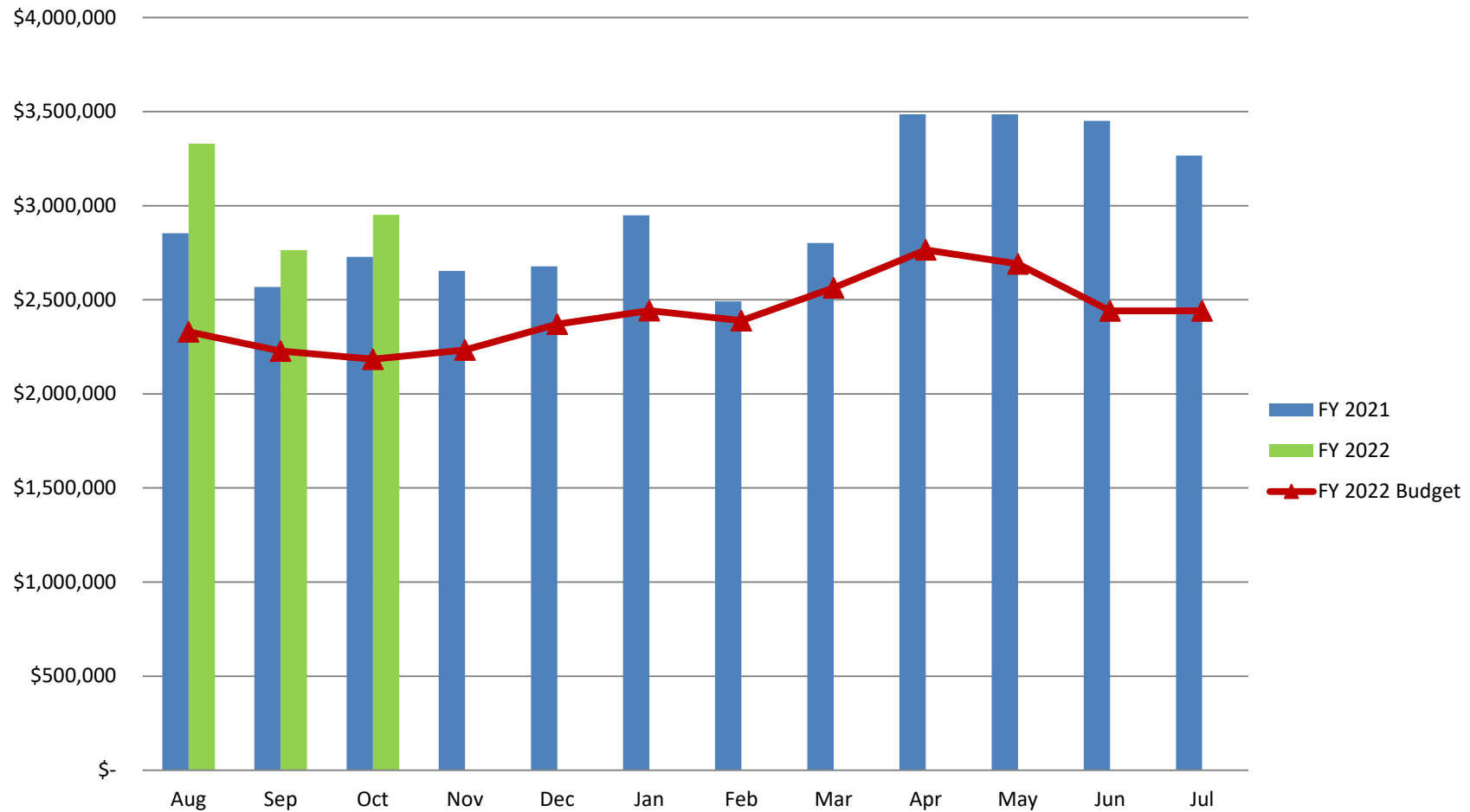
Lake Havasu City Sales Tax Revenue by Fiscal Year 2021-2022



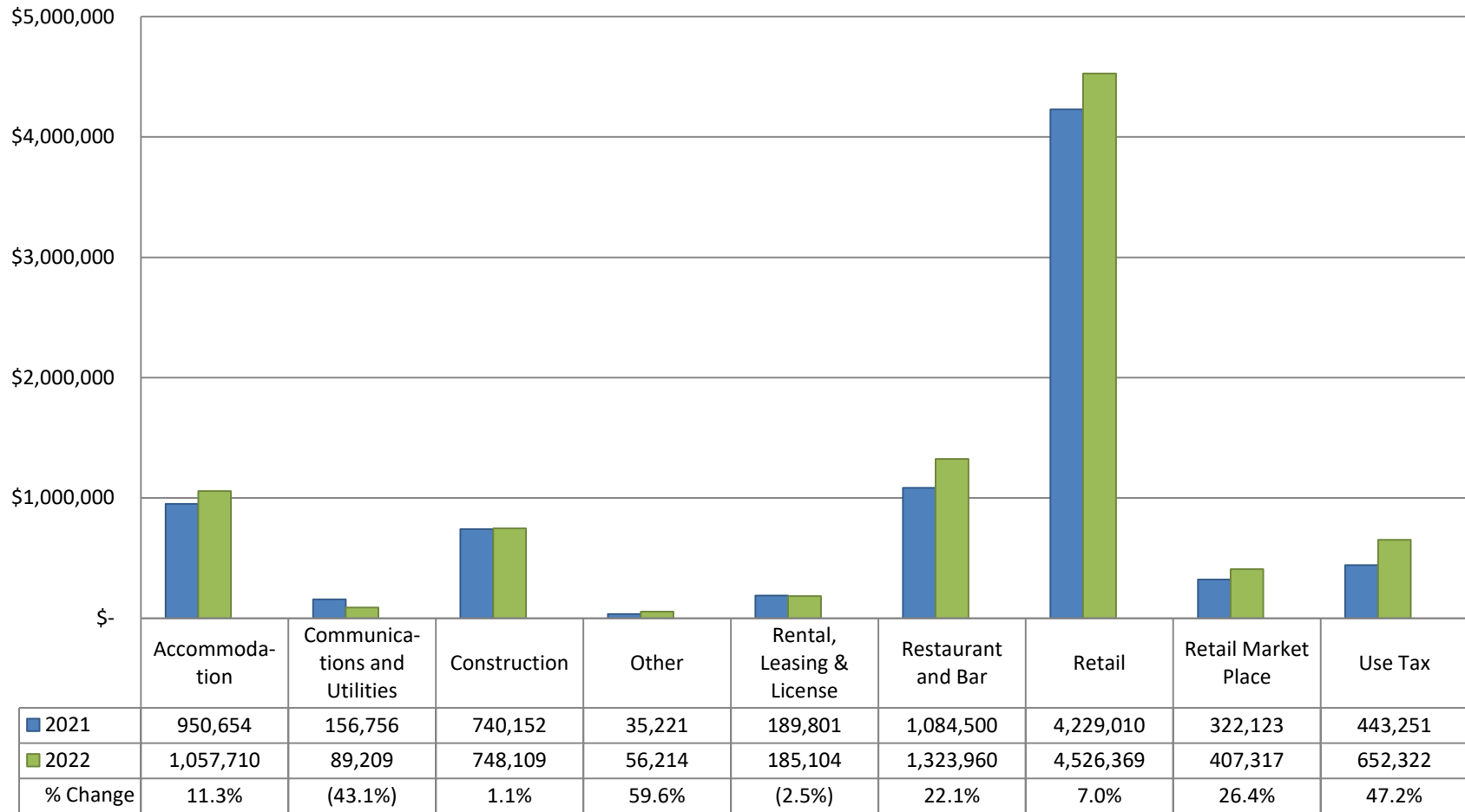
Lake Havasu City Total Tax Collected - Fiscal Year to Date



Lake Havasu City Total Sales Tax by Month Fiscal Year 2021 versus 2022



Lake Havasu City Sales Tax Collections by Industry FYTD 2021 vs. FYTD 2022



Retail Sales

October retail sales tax collections have Increased by \$136,692 or 8.9% compared to the same period last year. Fiscal Year to Date collections are 8.4 % higher than last year. The largest growth is in Nonstore Retailers

Month vs. Month Prior Year

Month	FY 2022	FY 2021	% Increase/Decrease over Prior Year
October	\$ 1,678,974	\$ 1,542,282	8.9%

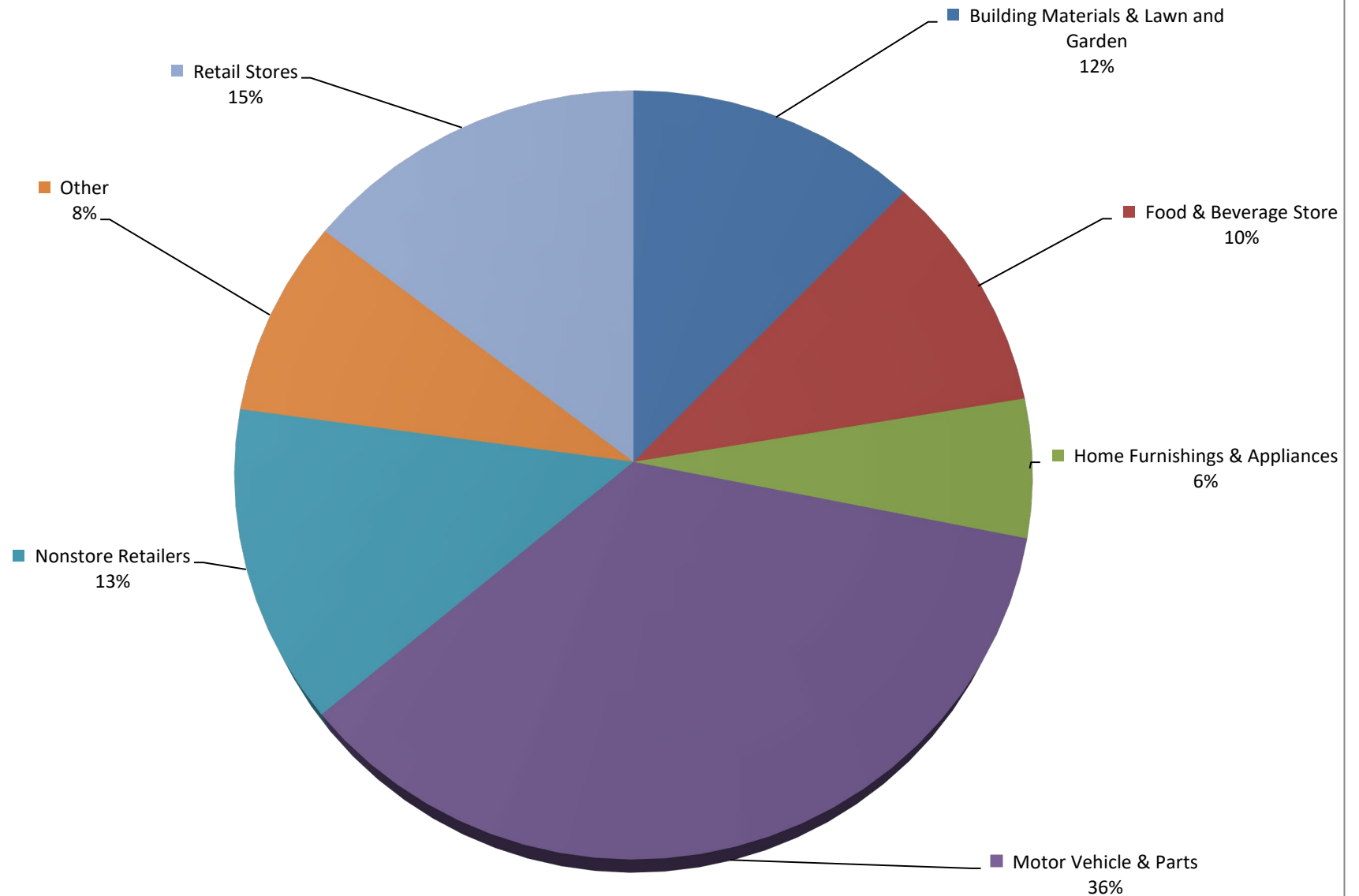
Fiscal YTD vs. Prior Fiscal YTD

2022 FYTD	2021 FYTD	% Increase/Decrease over Prior FYTD
\$ 4,933,686	\$ 4,551,133	8.4%

Month vs. Month Prior Year Retail Sales Categories

Retail Trade Categories	October 2021	October 2020	Change %
Building Materials & Lawn and Garden	\$ 201,657	\$ 173,365	16.3%
Food & Beverage Store	\$ 160,464	\$ 155,214	3.4%
Home Furnishings & Appliances	\$ 93,523	\$ 78,363	19.3%
Motor Vehicle & Parts	\$ 551,293	\$ 502,344	9.7%
Non-Store Retailers	\$ 208,338	\$ 177,840	17.1%
Other	\$ 241,224	\$ 242,472	-0.5%
Retail Stores	\$ 222,475	\$ 212,683	4.6%
Total	\$ 1,678,974	\$ 1,542,282	8.9%

Retail Sales by Category FYTD 2022



Accommodations and Restaurant & Bar

Lake Havasu City collects an additional tax on accommodations (3%) and restaurant & bar sales (1%). The revenues generated by these additional taxes support tourism and economic development. The Partnership of Economic Development (PED) receives \$500,000 annually and the Convention & Visitor's Bureau (Go Lake Havasu) receives \$1.6 million annually.

Month vs. Month Prior Year

Tax Type	October 2021	October 2020	% Increase/Decrease over Prior Year
Restaurant & Bar Additional 1%	\$ 138,036	\$ 118,173	16.8%
Hotel/Motel Additional 3%	\$ 168,490	\$ 172,146	-2.1%
2% City Sales Tax Collected	\$ 2,645,326	\$ 2,438,200	8.5%

Fiscal YTD vs. Prior Fiscal YTD

Tax Type	2022 FYTD	2021 FYTD	% Increase/Decrease over Prior Year
Restaurant & Bar Additional 1%	\$ 433,826	\$ 352,285	23.1%
Hotel/Motel Additional 3%	\$ 630,185	\$ 570,095	10.5%
2% City Sales Tax Collected	\$ 7,982,302	\$ 7,229,087	10.4%