



**September 2020**

**Sales, Use and Accommodation Tax Report**

The Lake Havasu City Sales, Use and Accommodation Tax Report examines taxes collected during the month of August 2020 by businesses and vendors, which were reported and remitted to the Arizona Department of Revenue in Sept 2020. Tax collection information is provided by Arizona Department of Revenue.

---

**Sales Tax**

Fiscal Year to Date (FYTD) September 2020 sales tax collections are 66.0% above budget and 22.0% above prior year. The month of September is 25.9% above prior year.

**Fiscal YTD vs. Budget**

Current Year Actual 2021 FYTD	Budget 2021 FYTD	% Increase/Decrease over Budget
\$ 5,422,948	\$ 3,266,410	66.0%

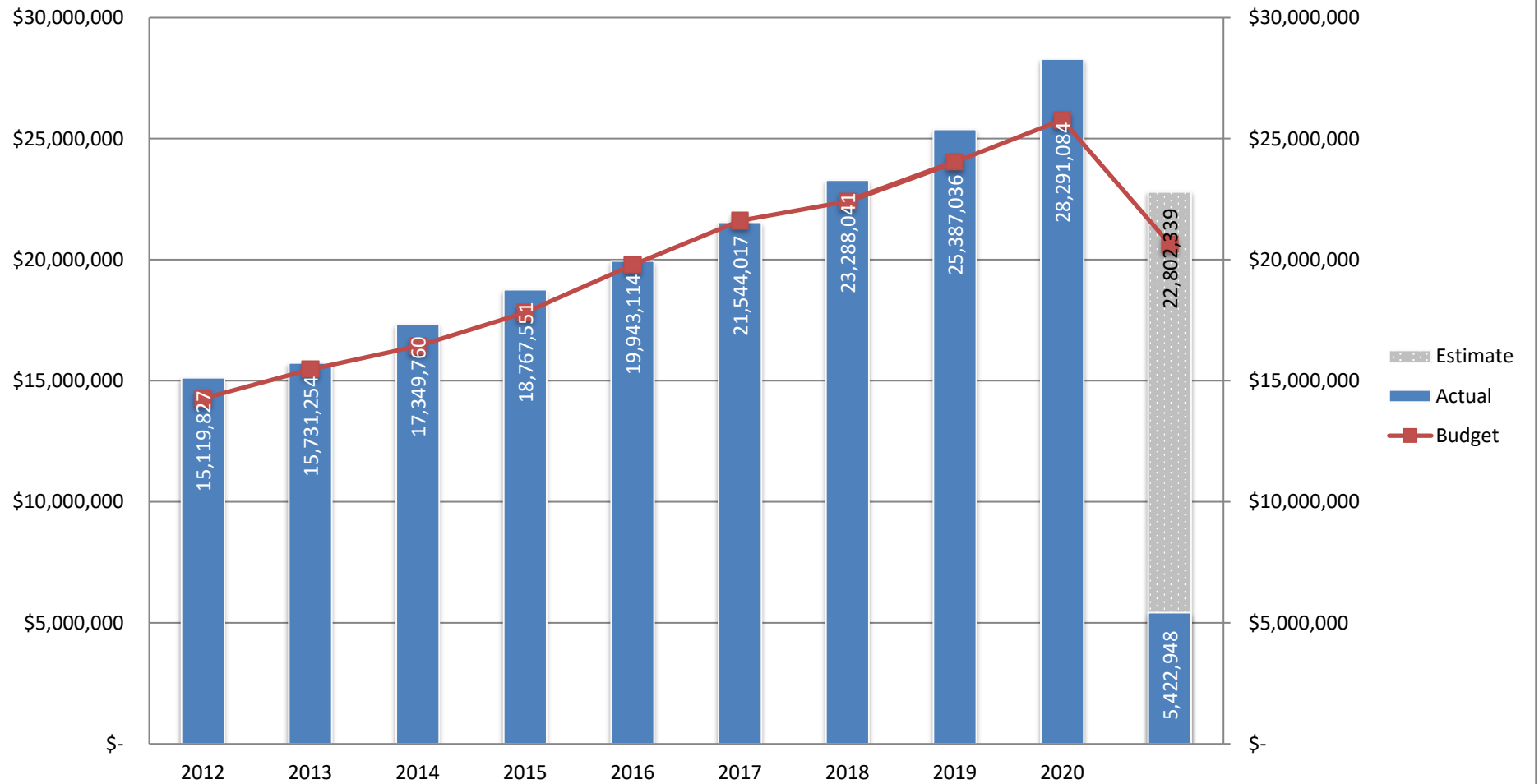
**Fiscal YTD vs. Prior Fiscal YTD**

Current Year Actual 2021 FYTD	Prior Year Actual 2020 FYTD	% Increase/Decrease over Prior FYTD
\$ 5,422,948	\$ 4,434,084	22.3%

**Month vs. Month Prior Year**

September 2020	September 2019	% Increase/Decrease over Prior Year
\$ 2,568,795	\$ 2,040,356	25.9%

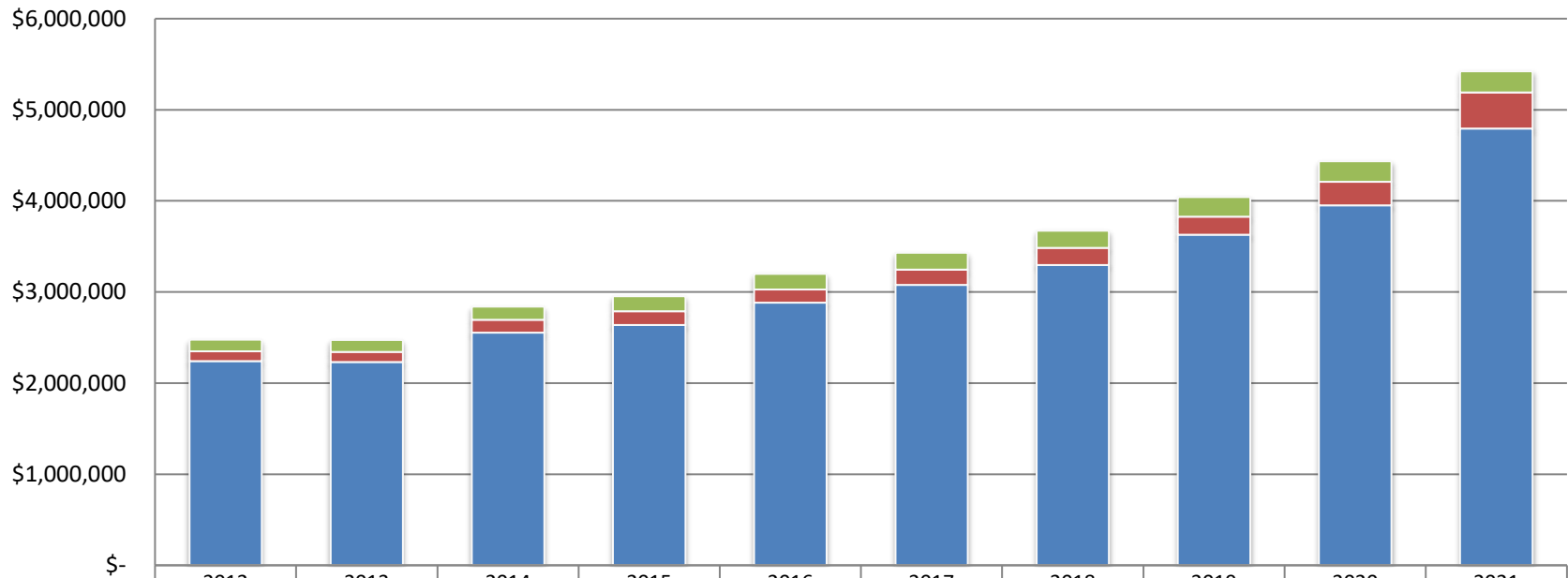
## Lake Havasu City Sales Tax Revenue by Fiscal Year 2020-2021



# Lake Havasu City

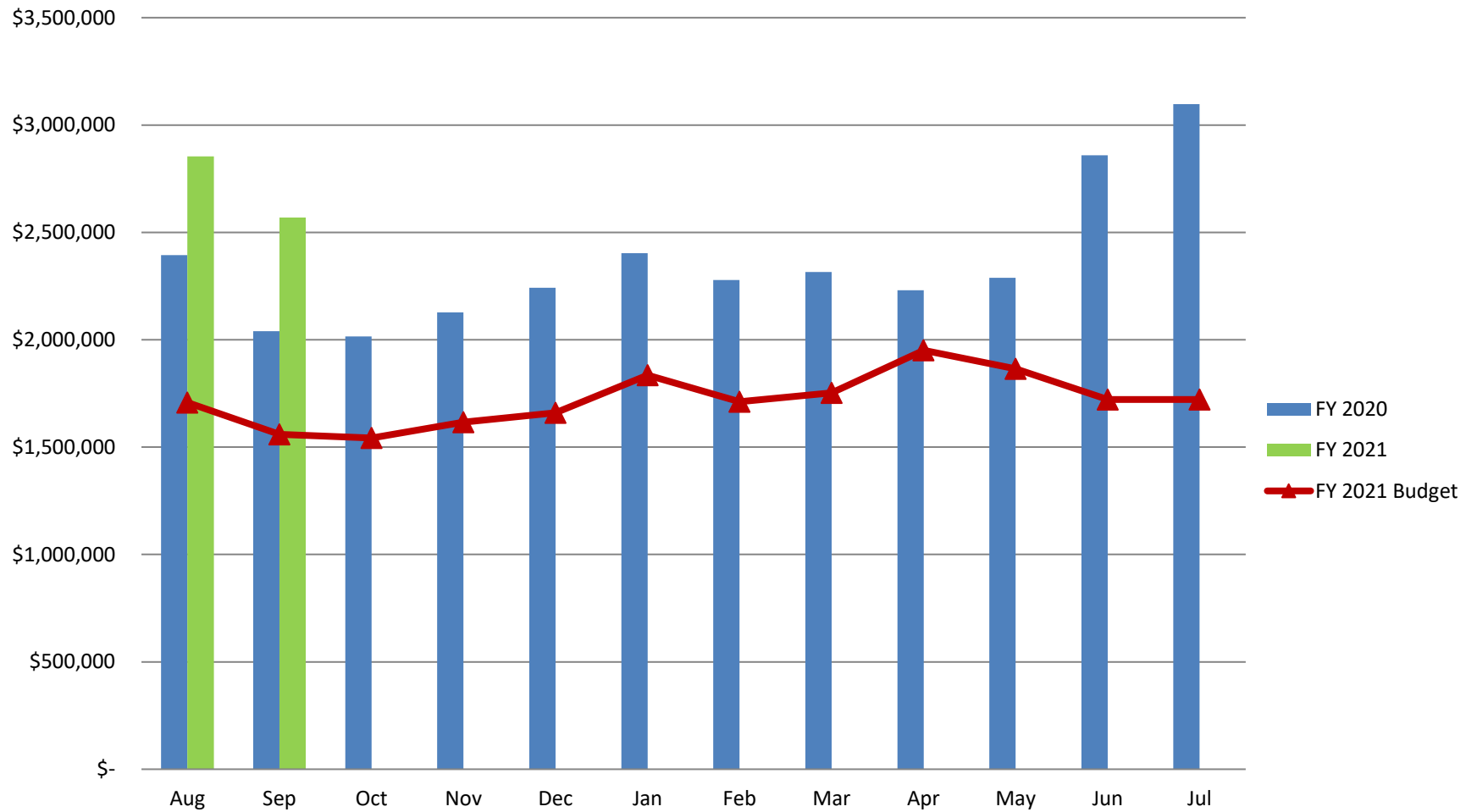
## Total Tax Collected - Fiscal Year to Date

### September 2020

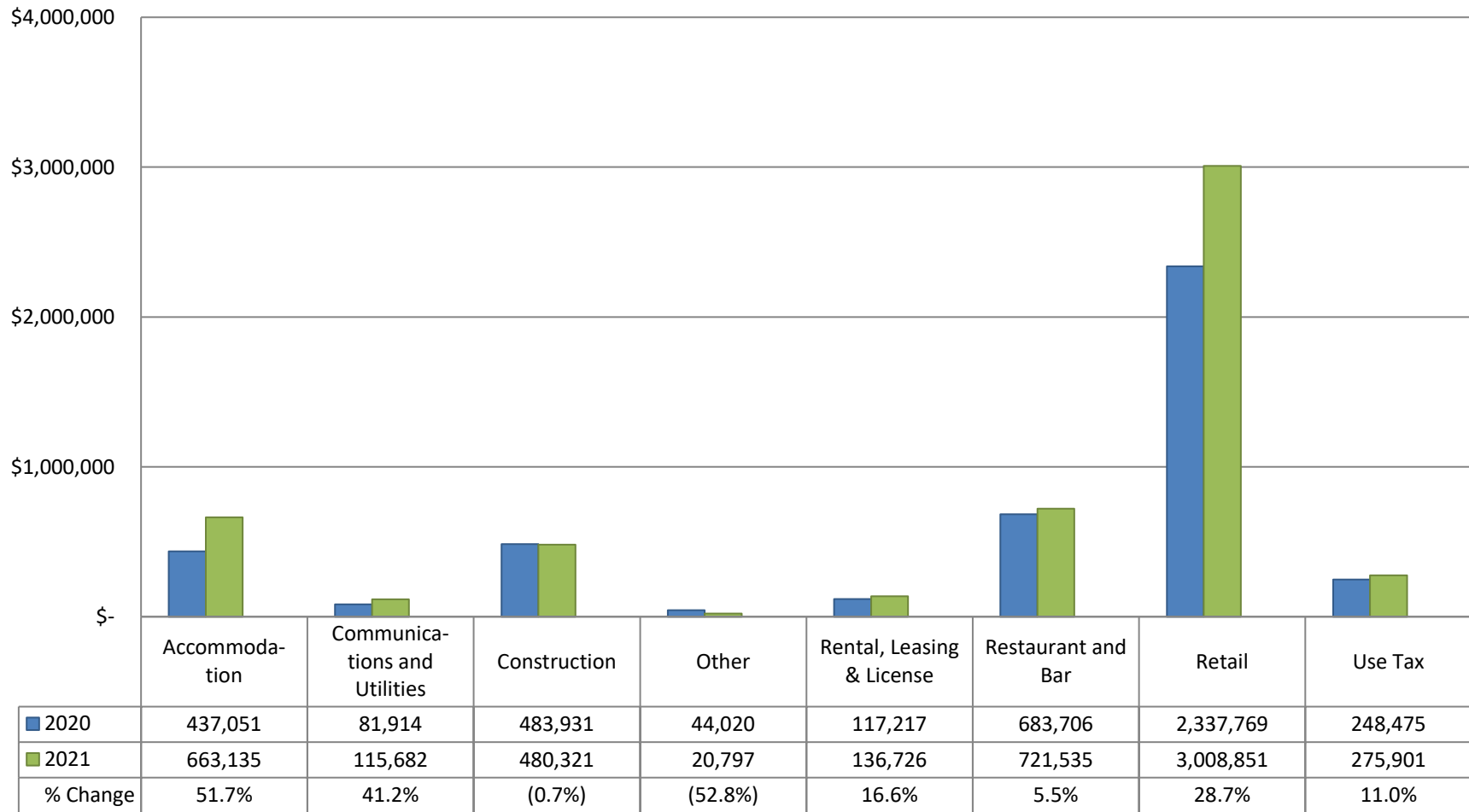


	2012	2013	2014	2015	2016	2017	2018	2019	2020	2021
Restaurant & Bar Add'l 1%	126,336	132,349	144,219	161,822	170,938	184,216	189,471	214,188	223,093	231,233
Hotel/Motel Add'l 3%	108,910	109,028	141,486	151,755	146,805	167,334	186,980	199,783	261,266	397,754
2% City Sales Tax Collected	2,239,811	2,232,832	2,552,445	2,638,478	2,881,641	3,077,329	3,295,882	3,628,583	3,949,726	4,793,961

## Lake Havasu City Total Sales Tax by Month Fiscal Year 2020 versus 2021



# **Lake Havasu City** **Sales Tax Collections by Industry** **FYTD 2020 vs. FYTD 2021**



## Retail Sales

September retail sales tax collections have Increased by \$340,629 or 31.4% compared to the same period last year. Fiscal Year to Date collections are 28.7% higher than last year. Note that the Wayfair case - requiring out-of-state online retailers to remit Arizona TPT taxes went into effect 10-1-2019.

### Month vs. Month Prior Year

Month	FY 2021	FY 2020	% Increase/Decrease over Prior Year
September	\$ 1,426,837	\$ 1,086,208	31.4%

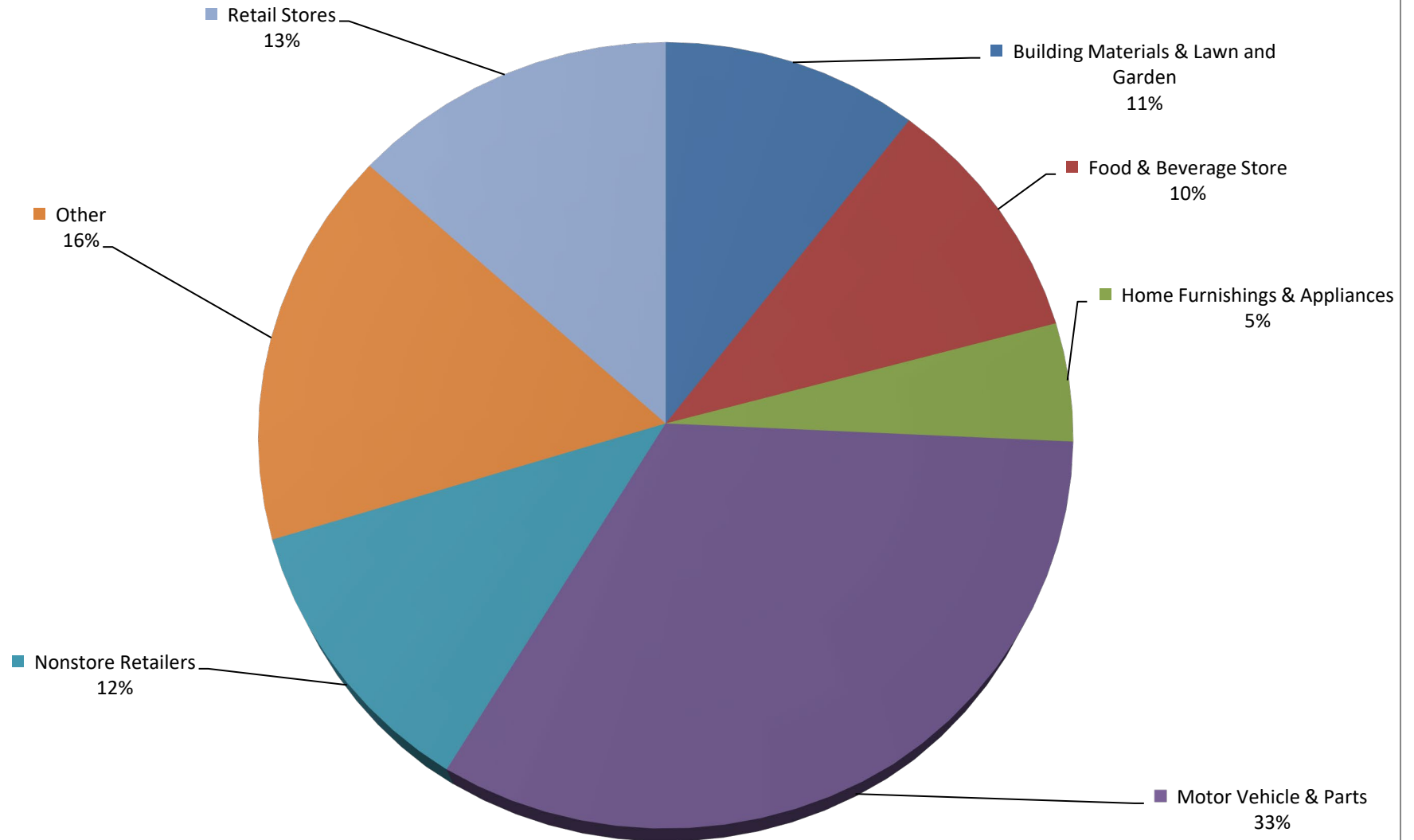
### Fiscal YTD vs. Prior Fiscal YTD

2021 FYTD	2020 FYTD	% Increase/Decrease over Prior FYTD
\$ 3,008,851	\$ 2,337,769	28.7%

### Month vs. Month Prior Year Retail Sales Categories

Retail Trade Categories	September 2020	September 2019	Change %
Building Materials & Lawn and Garden	\$ 145,753	\$ 111,250	31.0%
Food & Beverage Store	\$ 144,429	\$ 117,923	22.5%
Home Furnishings & Appliances	\$ 74,686	\$ 59,325	25.9%
Motor Vehicle & Parts	\$ 473,431	\$ 389,676	21.5%
Non-Store Retailers	\$ 165,491	\$ 74,212	123.0%
Other	\$ 223,549	\$ 157,720	41.7%
Retail Stores	\$ 199,498	\$ 176,102	13.3%
<b>Total</b>	<b>\$ 1,426,837</b>	<b>\$ 1,086,208</b>	<b>31.4%</b>

## Retail Sales by Category FYTD September 2020



## Accommodations and Restaurant & Bar

Lake Havasu City collects an additional tax on accommodations (3%) and restaurant & bar sales (1%).

### Month vs. Month Prior Year

Tax Type	September 2020	September 2019	% Increase/Decrease over Prior Year
Restaurant & Bar Additional 1%	\$ 115,463	\$ 104,063	11.0%
Hotel/Motel Additional 3%	\$ 182,991	\$ 117,302	56.0%
2% City Sales Tax Collected	\$ 2,270,342	\$ 1,818,991	24.8%

### Fiscal YTD vs. Prior Fiscal YTD

Tax Type	2021 FYTD	2020 FYTD	% Increase/Decrease over Prior Year
Restaurant & Bar Additional 1%	\$ 231,233	\$ 223,093	3.6%
Hotel/Motel Additional 3%	\$ 397,754	\$ 261,266	52.2%
2% City Sales Tax Collected	\$ 4,793,961	\$ 3,949,726	21.4%