



**September 2021**

## **Sales, Use and Accommodation Tax Report**

The Lake Havasu City Sales, Use and Accommodation Tax Report examines taxes collected during the month of August 2021 by businesses and vendors, which were reported and remitted to the Arizona Department of Revenue in September 2021. Tax collection information is provided by Arizona Department of Revenue.

---

### **Sales Tax**

Fiscal Year to Date (FYTD) September 2021 sales tax collections are 33.7% above budget and 12.4% above prior year. The month of September is 7.6% above prior year.

#### **Fiscal YTD vs. Budget**

Current Year Actual 2022 FYTD	Budget 2022 FYTD	% Increase/Decrease over Budget
\$ 6,094,463	\$ 4,558,105	33.7%

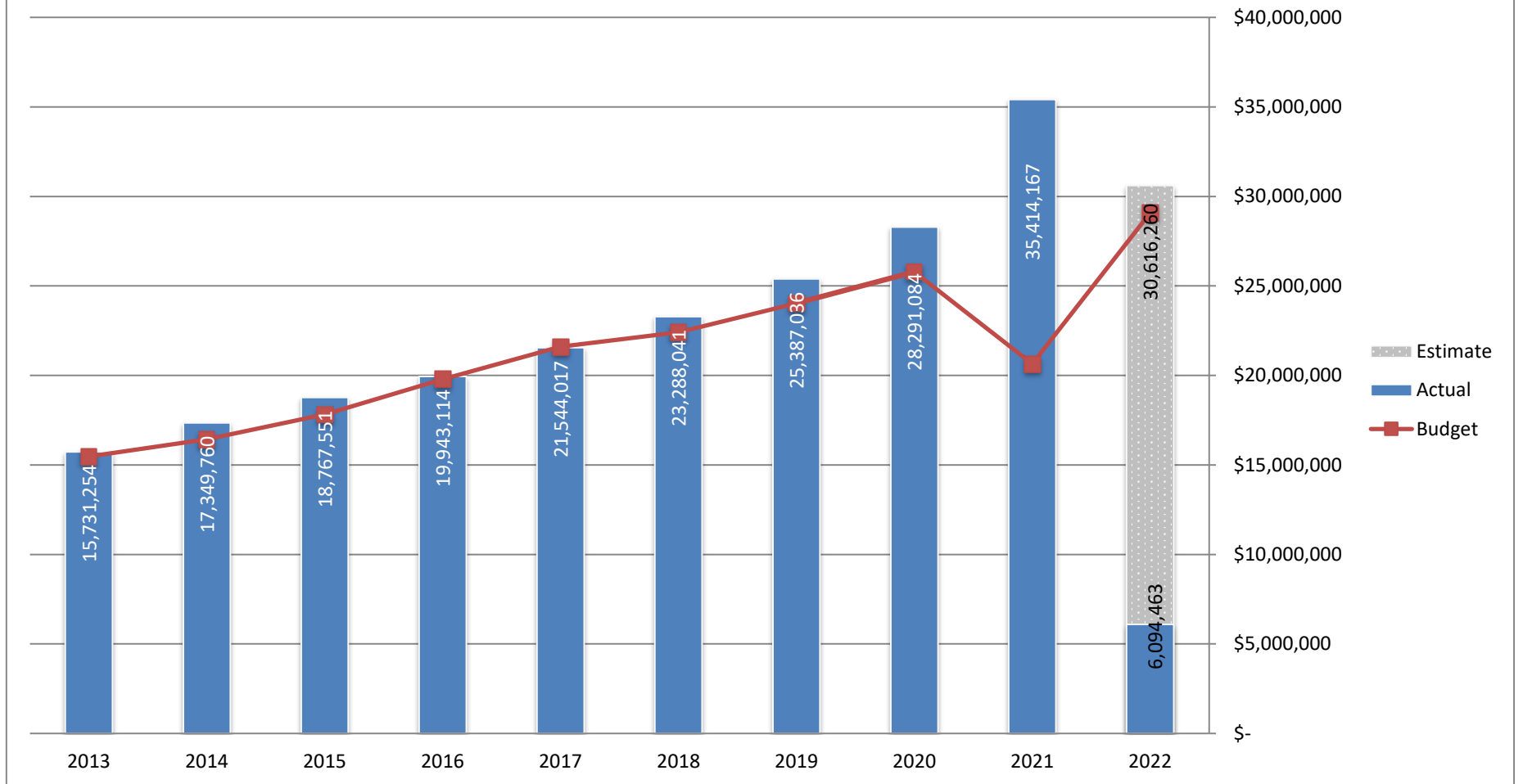
#### **Fiscal YTD vs. Prior Fiscal YTD**

Current Year Actual 2022 FYTD	Prior Year Actual 2021 FYTD	% Increase/Decrease over Prior FYTD
\$ 6,094,463	\$ 5,422,948	12.4%

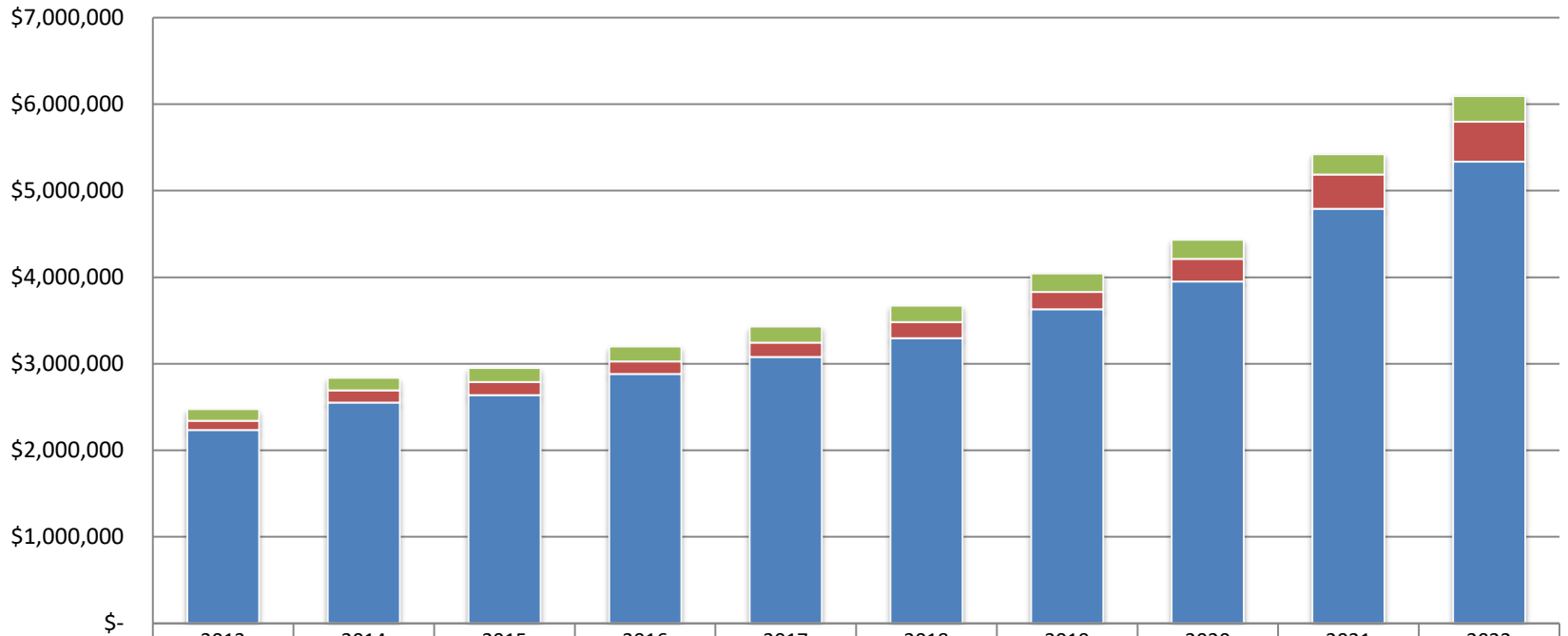
#### **Month vs. Month Prior Year**

September 2021	September 2020	% Increase/Decrease over Prior Year
\$ 2,764,685	\$ 2,568,795	7.6%

## Lake Havasu City Sales Tax Revenue by Fiscal Year 2021-2022

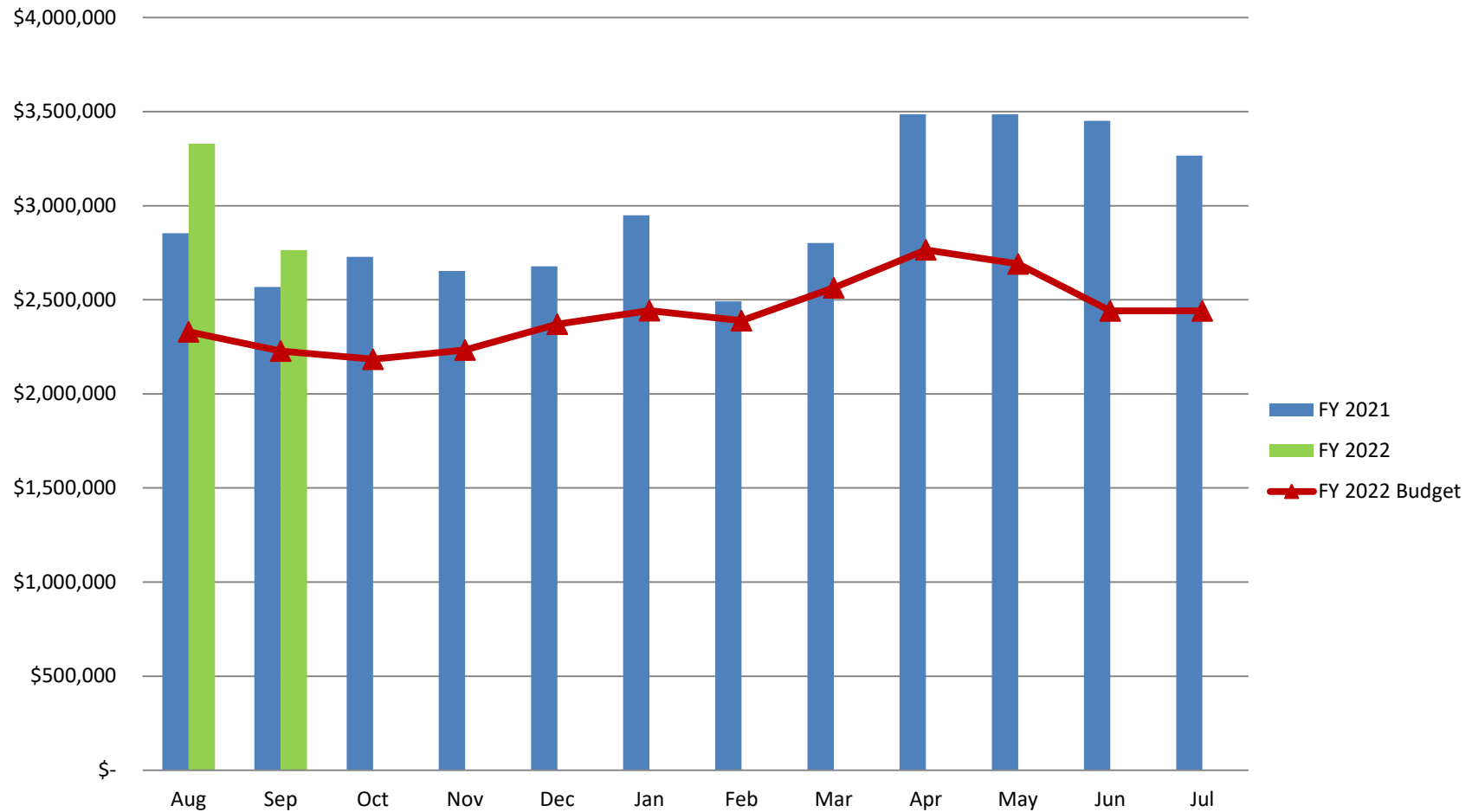


## Lake Havasu City Total Tax Collected - Fiscal Year to Date

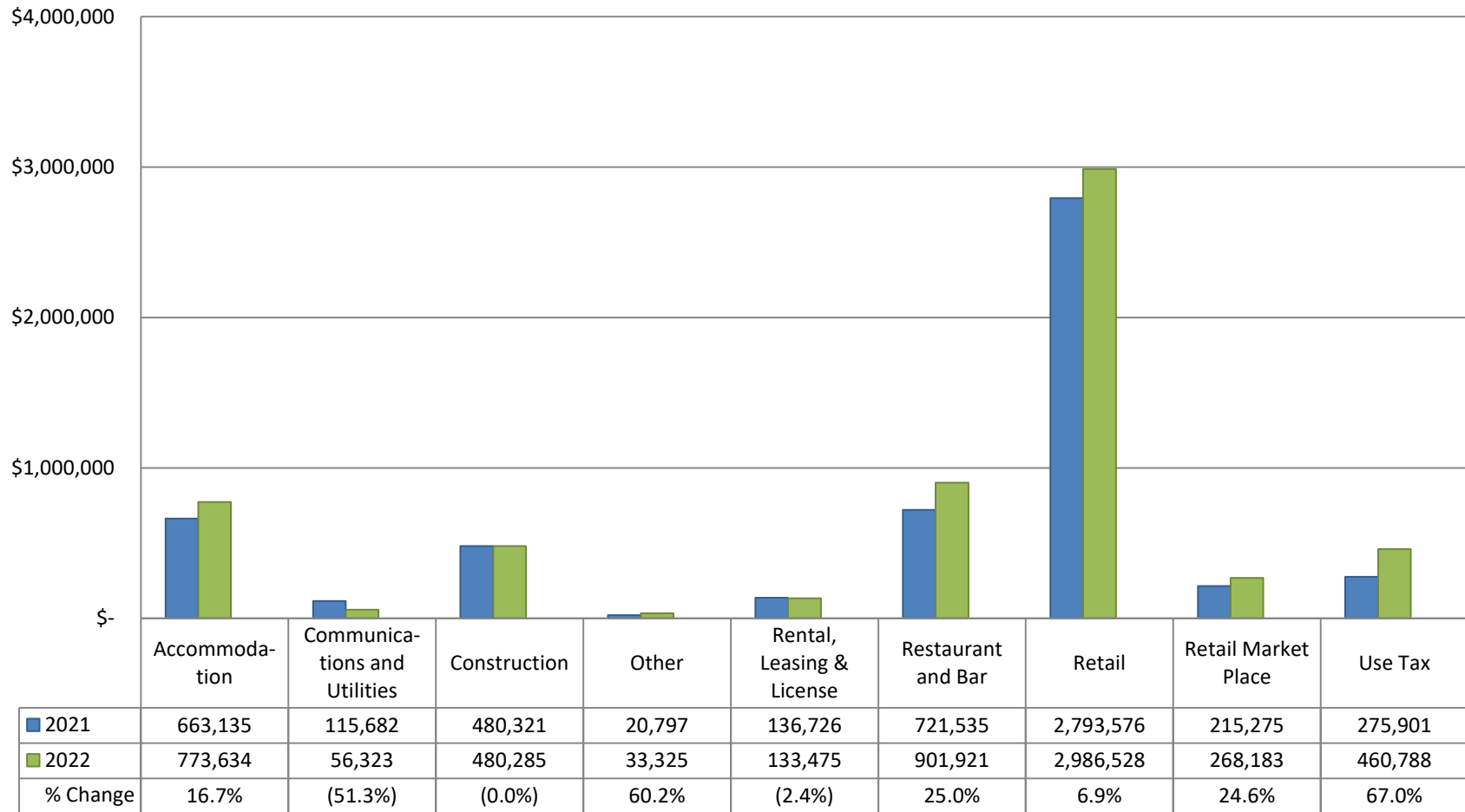


	2013	2014	2015	2016	2017	2018	2019	2020	2021	2022
■ Restaurant & Bar Add'l 1%	132,349	144,219	161,822	170,938	184,216	189,471	214,188	223,093	234,112	295,791
■ Hotel/Motel Add'l 3%	109,028	141,486	151,755	146,805	167,334	186,980	199,783	261,266	397,950	461,695
■ 2% City Sales Tax Collected	2,232,832	2,552,445	2,638,478	2,881,641	3,077,329	3,295,882	3,628,583	3,949,726	4,790,887	5,336,977

## Lake Havasu City Total Sales Tax by Month Fiscal Year 2021 versus 2022



# Lake Havasu City Sales Tax Collections by Industry FYTD 2021 vs. FYTD 2022



## Retail Sales

September retail sales tax collections have Increased by \$155,999 or 10.9% compared to the same period last year. Fiscal Year to Date collections are 8.2 % higher than last year. The largest growth is in Motor Vehicles & Parts

### Month vs. Month Prior Year

Month	FY 2022	FY 2021	% Increase/Decrease over Prior Year
September	\$ 1,582,836	\$ 1,426,837	10.9%

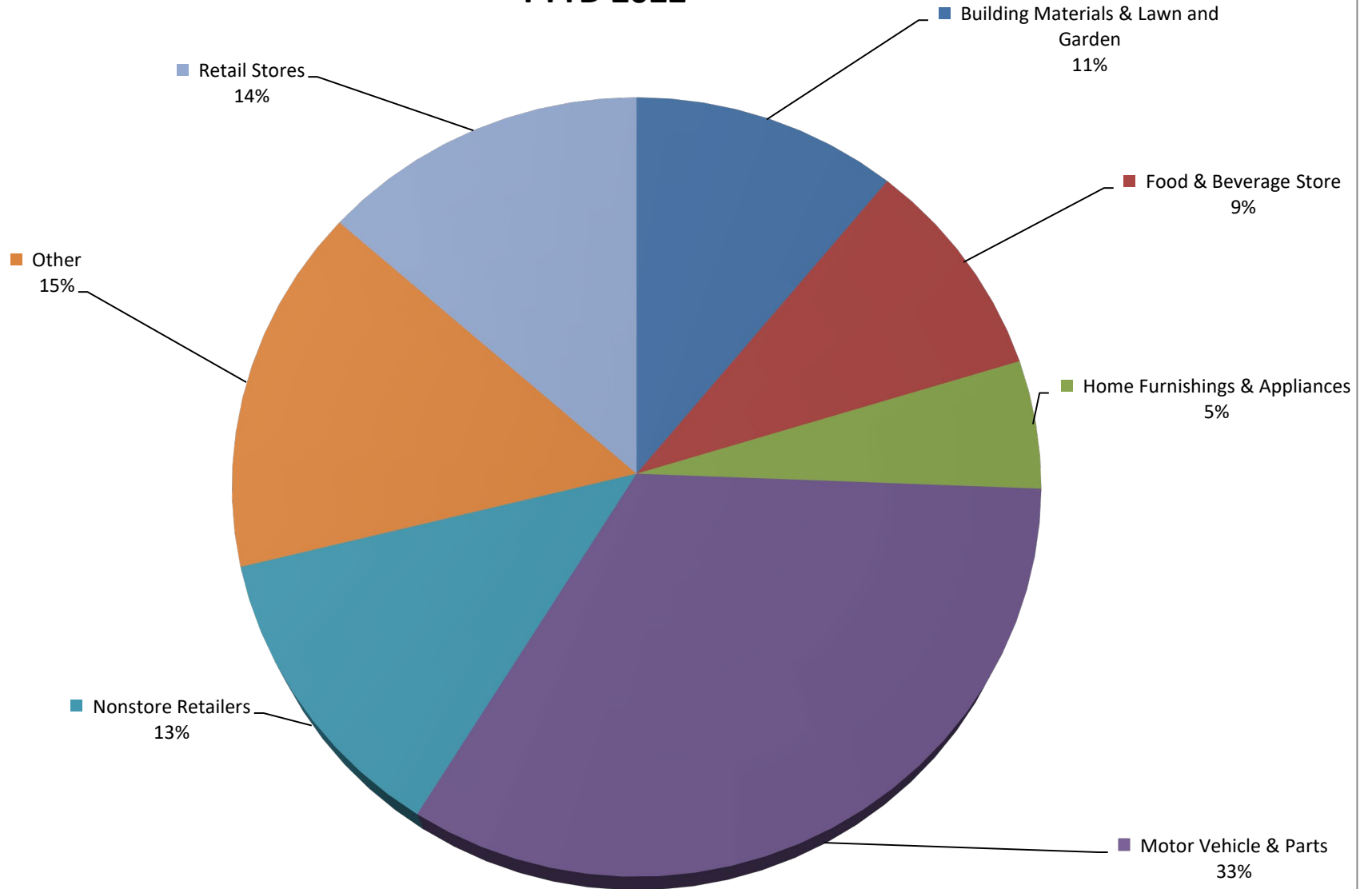
### Fiscal YTD vs. Prior Fiscal YTD

2022 FYTD	2021 FYTD	% Increase/Decrease over Prior FYTD
\$ 3,254,712	\$ 3,008,851	8.2%

### Month vs. Month Prior Year Retail Sales Categories

Retail Trade Categories	September 2021	September 2020	Change %
Building Materials & Lawn and Garden	\$ 171,701	\$ 145,753	17.8%
Food & Beverage Store	\$ 139,952	\$ 144,429	-3.1%
Home Furnishings & Appliances	\$ 79,048	\$ 74,686	5.8%
Motor Vehicle & Parts	\$ 524,952	\$ 473,431	10.9%
Non-Store Retailers	\$ 204,377	\$ 165,491	23.5%
Other	\$ 258,402	\$ 223,549	15.6%
Retail Stores	\$ 204,404	\$ 199,498	2.5%
<b>Total</b>	<b>\$ 1,582,836</b>	<b>\$ 1,426,837</b>	<b>10.9%</b>

## Retail Sales by Category FYTD 2022



## Accommodations and Restaurant & Bar

Lake Havasu City collects an additional tax on accommodations (3%) and restaurant & bar sales (1%). The revenues generated by these additional taxes support tourism and economic development. The Partnership of Economic Development (PED) receives \$500,000 annually and the Convention & Visitor's Bureau (Go Lake Havasu) receives \$1.6 million annually.

### Month vs. Month Prior Year

Tax Type	September 2021	September 2020	% Increase/Decrease over Prior Year
Restaurant & Bar Additional 1%	\$ 130,274	\$ 118,109	10.3%
Hotel/Motel Additional 3%	\$ 190,297	\$ 183,187	3.9%
2% City Sales Tax Collected	\$ 2,444,114	\$ 2,267,499	7.8%

### Fiscal YTD vs. Prior Fiscal YTD

Tax Type	2022 FYTD	2021 FYTD	% Increase/Decrease over Prior Year
Restaurant & Bar Additional 1%	\$ 295,791	\$ 234,112	26.3%
Hotel/Motel Additional 3%	\$ 461,695	\$ 397,950	16.0%
2% City Sales Tax Collected	\$ 5,336,977	\$ 4,790,887	11.4%